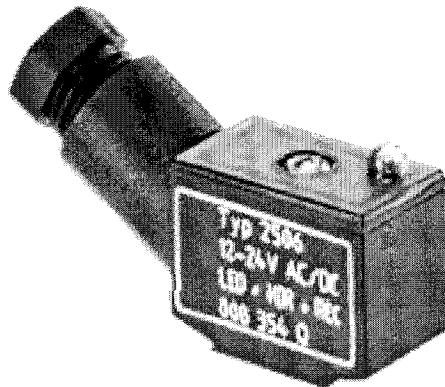


Width: 15,8 mm, Contact clearance: 8 mm, 0–250 V

### Advantages / Benefits

- ▶ Optional equipment with LED, rectifier, suppressor diode, pole protection and/or varistor
- ▶ Modular design allows flexibility in restricted space
- ▶ Easy wiring connection
- ▶ Pressure screw cable seals with strain relief



### Design/Function

The cable plug consists of

- a polyamide body with PC-cover and mounting screw,
- a contact insert that can be rotated by 180°,
- electro-silverplated brass contacts and
- a gasket seal from plug to coil

The strain relieving feature and cable seal is provided by a pressure screw with seal ring. The terminal screws are easily accessible, when the contact inserts are removed. The cable outlet is oriented 30° to plug face.

### Applications

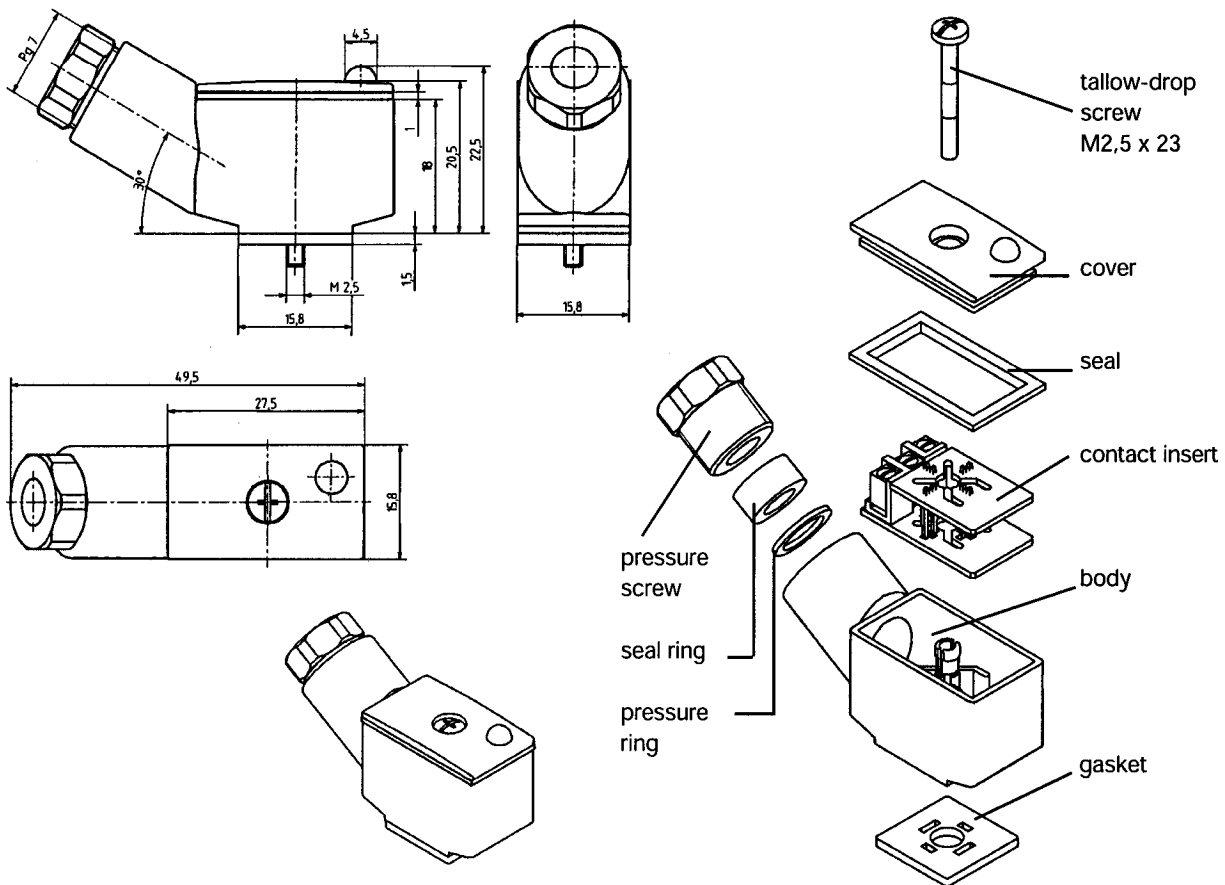
Plug-in connection for electrical devices and components, e.g. single and multiple miniature valves. Tag configuration according to DIN 43 650, form C.

# Cable Plug to DIN 43 650, Form C

## Technical Data

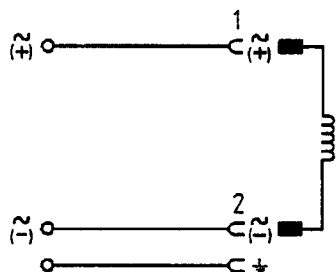
Body material	PA (polyamide)	Functional display	LED, yellow
Contact material	brass, electro-silverplated	Isolation group	C
Cable outlet (Outlet orientation of single valves)	oriented 30° to the plug face (cpl. cable plug can be rotated by 180°)	Protection class	IP 65
Isolation between cable plug and coil	gasket 1.5 mm	Max. continuous current	with diode 1 A
Continuous limit temp.	+125 °C	Contact resistance	5 mΩ
Cable diameter	5–6 mm	<b>Installation (cf. explosion drawing)</b>	
Electr. connection	terminal screws max. 0.75 mm <sup>2</sup>	<ul style="list-style-type: none"> <li>- remove cover</li> <li>- ease out contact insert</li> <li>- insert cable through pressure screw</li> <li>- wire cable according to connection plan</li> <li>- replace contact insert</li> <li>- seal cable plug with cover and gasket</li> <li>- push gasket on tag connectors</li> <li>- push cable plug firmly onto tags</li> <li>- secure cable plug with tallow-drop screw M2,5 x 23</li> </ul>	
Poles	2-pole + protective earth		
Nominal voltage	0–250 V		

## Dimensions in mm



## Wiring Diagrams/Connection Specifications

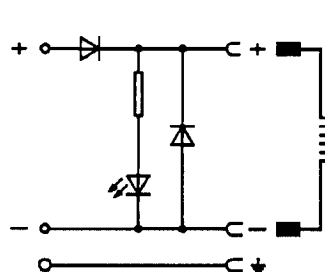
Without circuitry



0-250 V AC/DC

Order-No.: 008 353 P

With pole protection, suppressor diode and LED

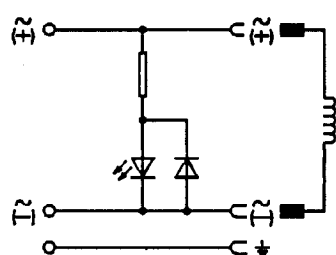


Caution!  
DC-voltage only  
Ensure correct  
polarity!

12-24 V DC

Order-No.: 008 411 S

With LED

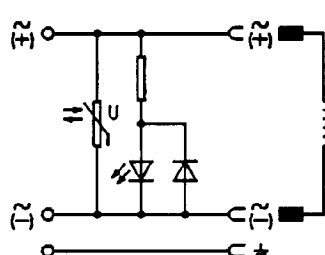


In case of  
DC-voltage  
ensure correct  
polarity!

12 V DC/24 V AC/DC  
100-120 V AC/DC  
200-240 V AC/DC

Order-No.: 008 402 A  
Order-No.: 008 403 B  
Order-No.: 008 404 C

With LED and varistor

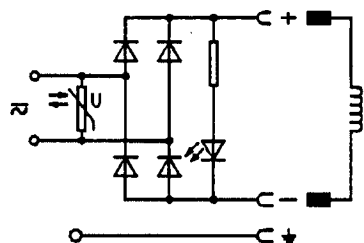


In case of  
DC-voltage  
ensure correct  
polarity!

12 V DC/24 V AC/DC  
100-120 V AC/DC  
200-240 V AC/DC

Order-No.: 008 408 Q  
Order-No.: 008 409 R  
Order-No.: 008 410 D

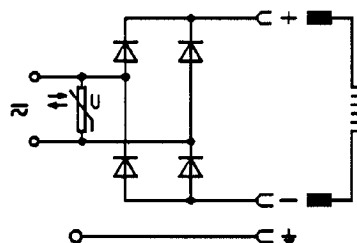
With rectifier, LED and varistor



12- 24 V AC/DC  
100-120 V AC/DC  
200-240 V AC/DC

Order-No.: 008 354 Q  
Order-No.: 008 355 R  
Order-No.: 008 356 J

With rectifier and varistor



12-240 V AC/DC

Order-No.: 008 412 T

**Ordering Chart (Other Versions on Request)**

All cable plugs are supplied with 2 poles + protective earth, a cable diameter of 5–6 mm, cable outlet oriented 30° to the plug face, with mounting screw M2,5 x 23 and gasket.

Circuitry		Voltage	Max. current	Order-No.
No circuitry		0–250 V	6 A	008 353 P
With LED		12– 24 V	6 A	008 402 A
With LED		100–120 V	6 A	008 403 B
With LED		200–240 V	6 A	008 404 C
With rectifier, LED and varistor		12– 24 V	2 A	008 354 Q
With rectifier, LED and varistor		100–120 V	2 A	008 355 R
With rectifier, LED and varistor		200–240 V	2 A	008 356 J
With LED and varistor	<b>RS#803-275</b>	12– 24 V	6 A	008 408 Q
With LED and varistor	<b>RS#803-287</b>	100–120 V	6 A	008 409 R
With LED and varistor	<b>RS#803-297</b>	200–240 V	6 A	008 410 D
With pole protection, suppressor diode and LED		12– 24 V	1 A	008 411 S
With rectifier and varistor		12–240 V	2 A	008 412 T
Pre-wired				on request