

Datasheet

Sensor Holder



Specifications

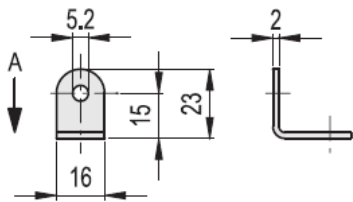
- Material

Sandblasted AISI 304 stainless steel, matte finish

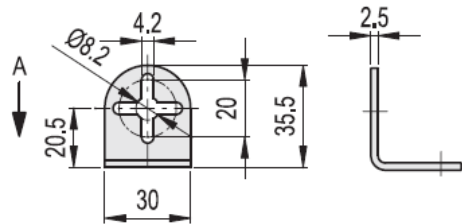
Features and applications

In MSM-LA-30 sensor holders, the cross-shaped hole provides a more precise regulation for fixing to MSM-F connecting clamps and it also allows the use of two clamping screws.

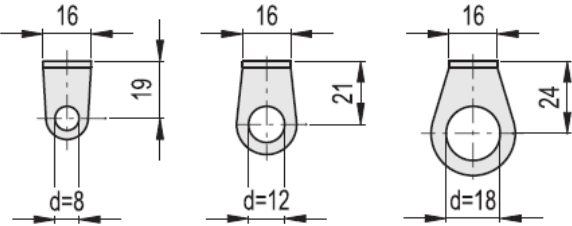
MSM-LA-16



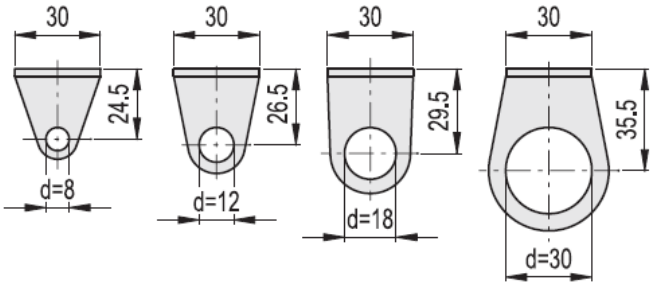
MSM-LA-30



View on A



View on A



Main Dimensions	
Stock No.	d1
7866185	8
7866197	12
7866201	18
7866194	8
7866191	12
7866204	18
7866208	30