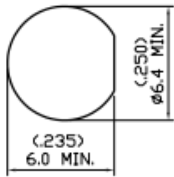
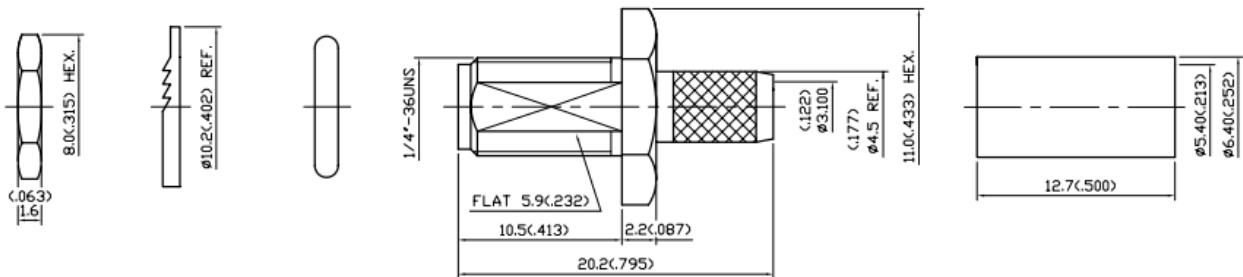


Datasheet

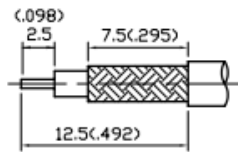
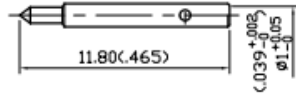
RS Straight Panel Mount Bulkhead Fitting SMA Connector, jack, Crimp Termination, Reverse Polarity

RS Stock number [546-2829](#)

Dimensions: (mm)



MOUNTING HOLE



STRIPPING DIMENSION

7	CENTER CONTACT	BRASS	1	GOLD 50 μ MIN.
6	FERRULE	BRASS	1	GOLD
5	WASHER	BRASS	1	GOLD
4	NUT	BRASS	1	GOLD
3	BODY	BRASS	1	GOLD 3 μ MIN.
2	INSULATION	TEFLON	1	NONE
1	O-RING	RUBBER	1	BLACK
NO	DESCRIPTION	MATERIAL	Q'TY	FINISH

Specifications

- Bodies: Brass Per JIS-C3604
- Center Contact: Brass Per JIS-C3604
- Insulation: Teflon Per ASTM D1457 and ASTM D1710
- Crimp Ferrule: Brass Per JIS-C2700
- Part to be clean and free of burrs