



Wiha. Premium Tools  
for Professionals.

# Wiha **Inomic**<sup>®</sup>

Pliers. Reinvented.

**The  
benefits are  
obvious.**

Turn over  
a new leaf  
now with  
**Wiha Inomic<sup>®</sup>.**

An  
excellent idea.

# Innovation Ergonomic

## Wiha has reinvented the pliers

The time for new pliers has come. Pliers that properly apply the force, instead of misdirecting it. Pliers that put an end to muscle tension, tendon pain and joint damage.

Pliers that always work, save time and also look good in the process.

The new pliers are called Wiha Inomic®. Inomic® stands for innovation plus ergonomics. The innovation comes from Wiha, partner of the professionals. And the ergonomics come from nature. Because Inomic® pliers constitute a natural extension of the arm and hand.

## The idea of the perfect tool

With the Inomic®, Wiha perfects the idea of ergonomic, angled hinged pliers. Creative product development and

established research worked together to construct a functional solution from the dream of the perfect tool.

And that needed time. Only now are fully developed technologies and new materials available that enable a stable and rugged lightweight design.

The result will also convince you and your customers. Take hold.

Feel the ergonomics of your new third hand.

## Inomic® convinces the experts

The new range of Inomic® pliers from Wiha combines functionality, ergonomics and technology. It features a high degree of innovation, is attractively designed, self-explanatory and durable.

This is the opinion of impartial experts. The IndustrieForum Design (iF) awarded the pliers the iF Product Design Award

2007. The Red Dot Design Awards 2007 jury also honoured the Inomic® with the red dot for good product design.



*The IndustrieForum Design (iF) praises the successful innovation and the functional design.*



*Inomic® will be shipped to the specialist trade after receiving the Red Dot Design Award 2007.*



**Fraunhofer** Institut  
Arbeitswirtschaft und  
Organisation

### Wiha development together with the Fraunhofer-Institut

Wiha Inomic® is dependable. Sound, application-orientated research accompanied the development of the pliers. Together with the Fraunhofer-Institut für Arbeitswirtschaft und Organisation (IAO) in Stuttgart, Wiha subjected every detail to an exhaustive analysis.

The design and development takes medical knowledge and current know-how from many research disciplines into account. Hundreds of users tested the mechanics, the gripping system, blade forms and jaw geometry. The optimum solution came out of a wide variety of forms and variants.

### Product features in short

- **Partner to the professionals**  
As a partner to the trade and inventor of premium tools for professionals, Wiha supplies solutions that are always innovative, rugged and of high quality.
- **Sound development**  
Innovations from Wiha mature on a sound basis. Structured research, well thought-out development and hard application tests occur before the market launch.
- **First rate ideas**  
Wiha Inomic®, the perfect tool that convinces users and experts alike. Design prizes affirm the high degree of functionality, design and innovation.

# Optimised for professional applications.

## Wiha Inomic® simplifies 72 percent of typical manual labour

Application tests affirm: In 72 percent of all typical cases, users can cope better with Inomic® pliers than with conventional tools. Particularly because they can grip with better control. And they always simplify manual labour. That's why Inomic® pliers from Wiha belong in every toolbox. It's the new standard tool for professionals, technicians and demanding do-it-yourselfers.

Complex installation work or electrical installation is accomplished faster with Wiha Inomic®. Because with a more natural, relaxed hand position, small parts can be precisely gripped and moved without slipping. Heavy or thick parts can be held more ergonomically with Wiha Inomic®. Innovative pliers jaws expand the application possibilities. Mechanics can look directly at the workpiece, whilst their hand works at the edge of the field of vision. Technicians and fitters gain a larger range of movement in most application situations. And they save energy and are always easy on the muscles, tendons and joints.



## Parallel grip movement improves the transmission of force

**Amazing.** The front, spring-mounted handle leg slides parallel and completely effortlessly relative to the body of the pliers. All fingers lie against the pliers at the same time. They grip parallel and exercise their full force from the first contact to the pressure point, even on thick workpieces.

The Inomic® principle increases the transmission of force over the entire blade movement. Very ergonomic and economical.



## More space and a better view for work and installation

**Agile.** The angled form and leverage compliment each other. And a higher torque results. Angles of rotation grow in all directions. The hand can apply its force more effectively. You gain more space. At the same time, you're working at the edge of the field of vision instead of in the middle of it as with straight pliers. The effect: A clear view of the workpiece, cable or assembly component. The user knows what he's doing.



### Professional assortment for trade, industry, service and business

**Versatile.** The new Wiha Inomic® pliers range is suited for professional applications in all fields of trade, industry, service and business. The black and red variations are used for general work. The Wiha Inomic® VDE in red and yellow is for working in the area with live parts up to 1000 VAC or 1500 VDC. Combination pliers, needle nose pliers and side cutters are all part of the assortment. That means every professional is fully equipped.

### Maximum transmission of force from the start

**Effective.** The benefit of the transmission of force has an effect all the way up to the tip of the pliers. A main principle of the Inomic is maximum power transmission and holding force with an ergonomically optimum grip. Up to 70 percent efficiency of the maximum hand forces is possible. Advantage: Firm, effortless gripping and holding. With conventional, straight pliers more than half of the hand forces disappear into thin air. Wiha Inomic® provides a pure increase in force.



### The 23 degree effect: Inomic® relaxes and becomes like a third hand

**Comfortable.** Inomic® fits in the hand like a natural extension of the muscular system. The pliers becomes like a third hand. The offset angle of the pliers body is 23 degrees. That means muscles and tendons can work relaxed and briskly and take uninhibited advantage of the movement range of the wrist. This is simply healthier.

### Handy arguments

- **The innovation**  
Ergonomically angled hinged pliers for all applications. From the professional supplier Wiha. Saves energy and time. Easy on the joints. For frequent applications.
- **For every professional**  
The better solution in 72 percent of all applications. The all-rounder for professionals in trade, industry, service and business. Belongs in every toolbox.
- **More space**  
Expanded application possibilities. More torque and larger angle of rotation. Better hold and a clear view of the workpiece. Accurate gripping in any position.

# Innovation down to the smallest detail.

## **Built for the most demanding use in the everyday work of professionals.**

Wiha Inomic® is innovation plus ergonomics and more. As a manufacturer of premium tools for professionals, Wiha ensures uncompromising quality, maximum reliability and safe design.

Inomic® pliers have already passed the practical test in harsh everyday work. Wiha's leading know-how is behind every single detail.



## **Light and precise**

The rugged pliers jaws made of ballbearing steel are produced with the innovative metal injection moulding process (MIM). That makes them lighter and more rugged than cast or forged steel parts.

A pair of Inomic® pliers is up to 20 percent lighter than conventional tools.



## **Corrosion and maintenance-free**

A complete zinc-nickel coating, a development from the automotive industry, gives the pliers jaws permanent, all-round corrosion resistance. Hybrid high-tech produces the joint: Special plastic with better sliding properties than steel is cast completely free of play with the plier jaws.



## **Impact resistant and safe**

The ergonomically formed, impact resistant body of the tool is made of glass-fibre reinforced plastic, which is low-friction in the sliding area of the movable blade and has a soft plastic coating (thermoplastic elastomer) in the pressure zone for the ball of the hand. The opening spring supports controlled, careful gripping. The catch at the back of the pliers locks the pliers for transport. So much safety in a single hand.



**MIM**

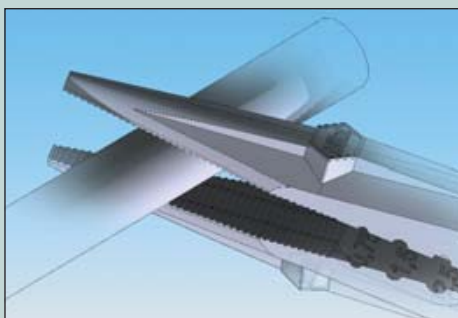
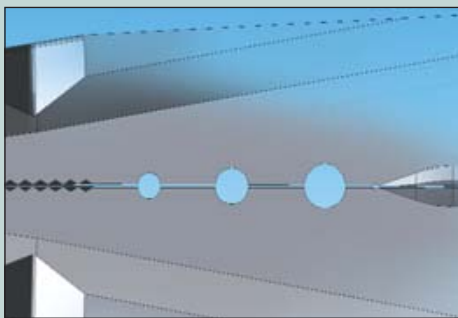
Metal Injection Moulding (MIM) is a revolutionary moulding process for manufacturing complexly formed metal miniature parts with outstanding features with regard to stability and surface finish.

## Inomic® needle nose pliers

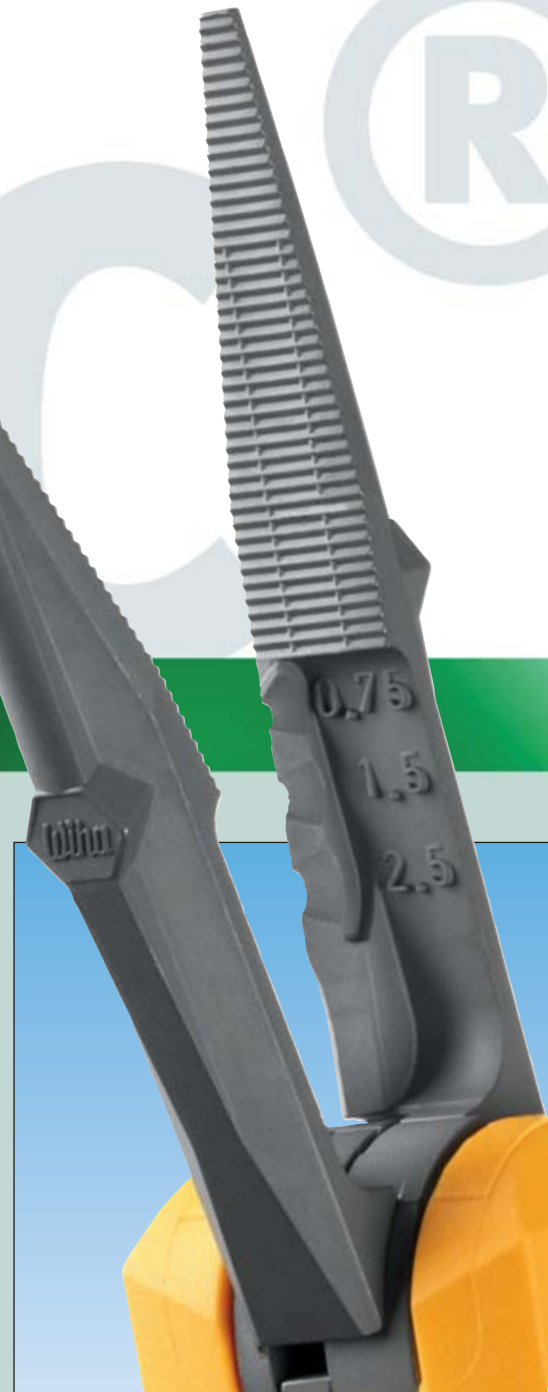
### With just the right touch, razor sharp on the wire

Wiring. A job that requires just the right touch. It becomes an easy exercise with the Wiha Inomic® needle nose pliers. The 23 degree angle form, the comfortable handle, the efficient power transmission, the light weight ... with these pliers Wiha has designed everything for easy, fast and fatigue-free work.

Additional functions make a multi-tool out of the simple telephone pliers. The Inomic® needle nose pliers come with side cutters and three integrated wire stripping stations for common cable sizes. The ring diameters are AWG 12, 10 and 8 (2.5 mm<sup>2</sup>, 1.5 mm<sup>2</sup> and 0.75 mm<sup>2</sup>).

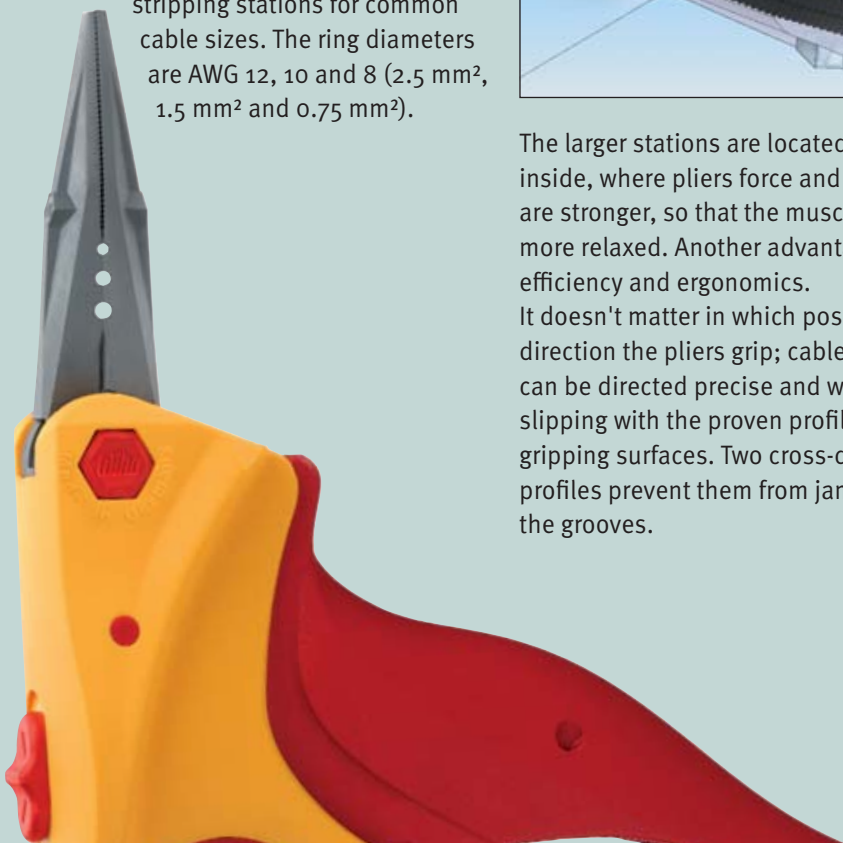


The larger stations are located on the inside, where pliers force and leverage are stronger, so that the muscles stay more relaxed. Another advantage for efficiency and ergonomics. It doesn't matter in which position and direction the pliers grip; cables and wires can be directed precise and without slipping with the proven profile of the gripping surfaces. Two cross-directional profiles prevent them from jamming up the grooves.



### Handy arguments

- **Light and fast**  
Ergonomic, light pliers design with efficient power transmission for fast, fatigue-free wiring in every situation.
- **Multifunctional**  
Elongated side cutters with rugged jaws. Integrated wire stripping stations for common cable sizes. Pliers force and leverage are optimally used.
- **Firm handling**  
Clear view of the pliers tip. Controlled gripping of the cable and wire. Gripping and directing without slipping with maximum range of movement.

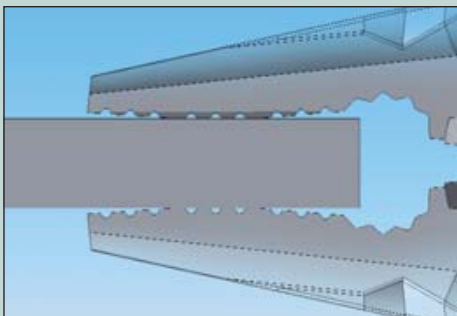
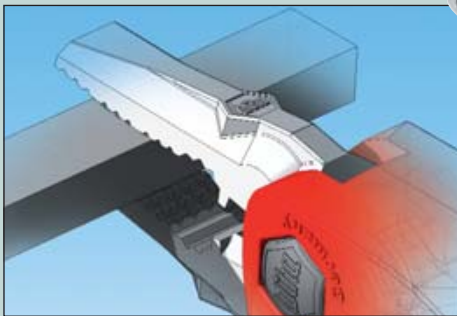


## Inomic® combination pliers

### **Straightforward handling, parallel and powerful gripping**

Whatever the Wiha Inomic® combination pliers take hold of, remains tightly gripped. Because the gripping surfaces lie parallel on the workpiece and extend far into the jaws. This means: A larger, non-slip contact and pressure surface also with objects having varying thicknesses. Added to the optimum power transmission, this produces the firm hold.

Pyramid stumps, cleanly arranged in a cross profile, ensure the right grip. It doesn't matter in which position and direction the pliers grip, they nestle entirely around the workpiece. And that's why there's so little restriction when working with the Inomic®.



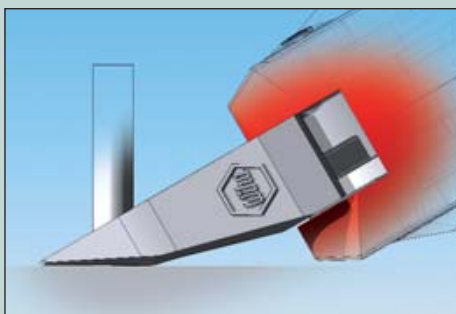
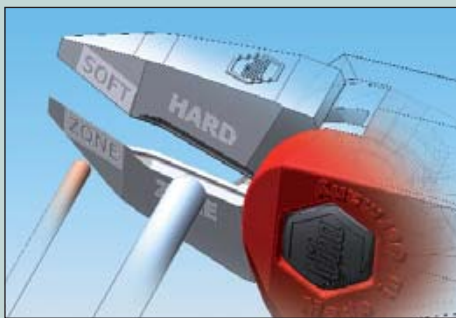
### **Handy arguments**

- **Firm hold**  
Pyramid stumps in a cross profile give grip. Parallel contact and pressure surfaces give hold. Even with workpieces of varying sizes.
- **High holding force**  
Full performance even with thick objects. The larger the jaw opening, the nearer the pliers grip to the joint. The power transmission is used optimally.
- **Powerful cutting**  
Side cutters located near the joint enable powerful, efficient cutting with extremely hard cutting edges made of ball-bearing steel.

## Inomic® side cutters

### Two cutting edges in one for soft and hard cases

Two cutting edges in one. More functions in an extremely small space. This is how the solution for specialists looks. The inner cutting edge with a powerful facet cuts hard wires or steel nails effortlessly. The cutting angle and distance to the joint are exactly matched for this purpose. The outer cutting edge without facet is ideal for the softer cases. It cuts through copper wire or plastic parts easily and with careful use of the force of the hand. All strengths of the Inomic® work together: Parallel guidance of the gripping blade, stronger transmission of force and better power transmission, the ergonomic 23 degree angle ...



The offset in the cutting edge also has its function: A steep blade angle. It gives the fingers and hand a greater range of movement. The tip contacts the object better, cuts everything precisely, flat and free of burrs.



### Handy arguments

- **Two functions in one pair of pliers**  
Two cutting edges in one. Inside for hard material, outside only for soft. Cutting head made of high-quality ball-bearing steel, durable, maintenance-free.
- **Better control**  
Ergonomic tool form at a 23 degree angle. Clear view of the blade for controlled cutting. Optimised design for efficient use of force.
- **Clean result**  
Angled tip enables flat cutting and burr-free cutting off of soft materials. More range of movement for the fingers and hand.



# Overview of the Inomic® pliers.

## Combination pliers



### Z 01 9 15 Inomic® combination pliers.

Head shape: Innovative head with three parallel gripping surfaces at opening angles of 2°, 10° and 20° offers an improved and secure hold of the workpiece. Crosswise-profiled gripping surfaces with specially shaped teeth for gripping in all directions.

Application: For gripping, holding and cutting.  
With improved access to the objects to be processed.

Order-No.	Typ		
30655 7	180	155	5

## Needle nose pliers



### Z 06 9 15 Inomic® needle nose pliers.

Head shape: Straight shape with blade and three stripping points 2.5 mm<sup>2</sup>, 1.5 mm<sup>2</sup>, 0.75 mm<sup>2</sup>. Parallel and crosswise profiling for gripping in all directions.

Application: For gripping, holding, cutting and stripping.  
With improved access to the objects to be processed.

Order-No.	Typ		
30660 1	160	150	5

## Side cutters



### Z 12 9 15 Inomic® side cutters.

Head shape: Innovative head with dual cutting function.  
Cutting edge with bevel near the joint, cutting edge without bevel in the front cutting area.

Application: For cutting hard wires in the joint area.  
Flush, burr-free cutting of soft wires, cables and plastics in the front cutting area.  
With improved access to the objects to be processed.

Order-No.	Typ		
30663 2	160	140	5

## Combination pliers



### Z 01 9 16 Inomic® VDE combination pliers.

Protective isolation 1,000 VAC,  
GS inspected.

Standards: Manufactured acc. to IEC 60900:2004.

Head shape: Innovative head with three parallel gripping surfaces at opening angles of 2°, 10° and 20° offers an improved and secure hold of the workpiece. Crosswise-profiled gripping surfaces with specially shaped teeth for gripping in all directions.

Application: For gripping, holding and cutting. With improved access to the objects to be processed.

Order-No.	Typ		
30658 8	180	155	5

## Needle nose pliers



### Z 06 9 16 Inomic® VDE needle nose pliers.

Protective isolation 1,000 VAC,  
GS inspected.

Standards: Manufactured acc. to IEC 60900:2004.

Head shape: Straight shape with blade and three stripping points 2.5 mm<sup>2</sup>, 1.5 mm<sup>2</sup>, 0.75 mm<sup>2</sup>. Parallel and crosswise profiling for gripping in all directions.

Application: For gripping, holding, cutting and stripping.  
With improved access to the objects to be processed.

Order-No.	Typ		
30661 8	160	150	5

## Side cutters



### Z 12 9 16 Inomic® VDE side cutters.

Protective isolation 1,000 VAC,  
GS inspected.

Standards: Manufactured acc. to IEC 60900:2004.

Head shape: Innovative head with dual cutting function.  
Cutting edge with bevel near the joint, cutting edge without bevel in the front cutting area.

Application: For cutting hard wires in the joint area.  
Flush, burr-free cutting of soft wires, cables and plastics in the front cutting area.  
With improved access to the objects to be processed.

Order-No.	Typ		
30666 3	160	140	5

# Point-of-sale dealer support.



1



3



4



2

## 1 Sales counter display

Clear: The display carton contains 10 pairs of pliers (2 packaging units). The back board is very general and can be quickly and individually adapted.

## 2 End user flyer

Convincing: All Inomic® advantages and available pliers models at a glance.

## 3 Presentation via individual hooks

Practical: The individual hooks enable simple attachment of the pliers on your peg board.

## 4 Self-service version

Useful: All types of pliers are also available in a self-service version. Advantage: The user can test the pliers and the advantages are described on the back.



5

## 5 Pouch

Easy: The comfortable storage and transport option can be attached to your belt.

## 6 Information video

Descriptive: The 2 minute film shows all advantages for the end user based on various applications of the different pliers models.



**Wiha. Premium Tools  
for Professionals.**

**Wiha Werkzeuge GmbH**  
Obertalstraße 3-7  
D-78136 Schonach/Germany  
Phone: +49 (0) 7722 959-0  
Fax: +49 (0) 7722 959-159 Germany  
Fax: +49 (0) 7722 959-155 Export  
info@wiha.com  
[www.wiha.com](http://www.wiha.com)

## Pliers for every tool assortment.

If your customers value health, modern comfort, ergonomics and innovation and they're looking for high-quality pliers, then recommend Wiha Inomic®.

The new line of pliers from Wiha belongs in every tool assortment, whether as the standard model in black and red or as Inomic® VDE in red and yellow for working with live parts.

The advantage for the specialist trade are obvious: You recommend an innovative, comfortable and absolutely dependable premium tool. You convey the image of your customer as a demanding professional. You increase customer satisfaction through right of return, the Wiha guarantee and quality and safety certificates. You achieve a high unit profit with premium tools.

