

Bus system flat-type plug - SACCEC-M12FSB-2CON-M16/10-910 - 1525911

Please be informed that the data shown in this PDF Document is generated from our Online Catalog. Please find the complete data in the user's documentation. Our General Terms of Use for Downloads are valid (<http://phoenixcontact.com/download>)



Bus system flush-type socket, PROFIBUS, 2-pos., M12, shielded, B-coded, front/screw mounting with M16 thread, with 10 m bus cable, 2 x 0.25 mm²



Key commercial data

Packing unit	1 pc
GTIN	 4 046356 022521
Weight per Piece (excluding packing)	622.0 g
Custom tariff number	85369010
Country of origin	Germany
Note	Made to Order (non-returnable)

Technical data

Dimensions

Length of cable	10 m
-----------------	------

Ambient conditions

Degree of protection	IP67
----------------------	------

General

Rated current at 40°C	4 A
Rated voltage	60 V
Number of positions	2
Contact resistance	≤ 3 mΩ
Insulation resistance	≥ 100 MΩ
Coding	B - inverse
Status display	No
Pollution degree	3
Test voltage	2500 V

Bus system flat-type plug - SACCEC-M12FSB-2CON-M16/10-910 - 1525911

Technical data

General

Connection method	PROFIBUS
Mounting type	Front mounting M16 x 1.5

Material

Inflammability class according to UL 94	HB
Contact material	CuZn
Contact surface material	Ni/Au
Material, knurls	Metal

Cable

Cable type	PROFIBUS
Conductor cross section	0.22 mm ²
AWG signal line	24
Conductor structure signal line	19x 0.12 mm
Core diameter including insulation	2.55 mm ±0.07 mm
Wire colors	Red, green
Type of pair shielding	Aluminum-lined polyester foil
Overall twist	2 cores with 2 fillers to the core
Shielding	Braided shielding made of galvanized copper wires
Optical shield covering	80 %
External sheath, color	Violet, RAL 4001
External cable diameter	7.80 mm
Smallest bending radius, fixed installation	min. 78 mm
Smallest bending radius, movable installation	min. 78 mm
Number of bending cycles	5000000
Bending radius	78 mm
Traversing path	10 m
Traversing rate	3 m/s
Acceleration	7 m/s ²
Outer sheath, material	PUR
Material conductor insulation	Foamed PE
Conductor material	Tin-plated Cu litz wires
Insulation resistance	≥ 5 GΩ*km
Conductor resistance	≤ 78.4 mΩ/m
Working capacitance	32 pF (core-core)
Nominal voltage, cable	30 V
Test voltage Core/Core	1500 V

Bus system flat-type plug - SACCEC-M12FSB-2CON-M16/10-910 - 1525911

Classifications

eCl@ss

eCl@ss 4.0	27140815
eCl@ss 4.1	27140815
eCl@ss 5.0	27143423
eCl@ss 5.1	27143423
eCl@ss 6.0	27143423
eCl@ss 7.0	27449001
eCl@ss 8.0	27440103

ETIM

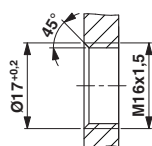
ETIM 2.0	EC001297
ETIM 3.0	EC002061
ETIM 4.0	EC000830
ETIM 5.0	EC002061

UNSPSC

UNSPSC 6.01	31251501
UNSPSC 7.0901	31251501
UNSPSC 11	31251501
UNSPSC 12.01	31251501
UNSPSC 13.2	31251501

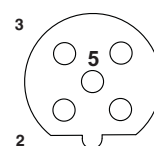
Drawings

Dimensioned drawing



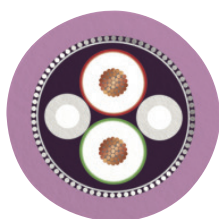
Housing cutout for M16 fastening thread, mounting panel with thread

Schematic diagram



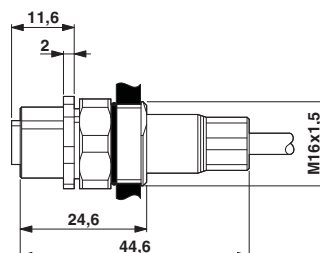
Pin assignment M12 socket, 5-pos., B-coded, female side

Cable cross section



PROFIBUS [910]

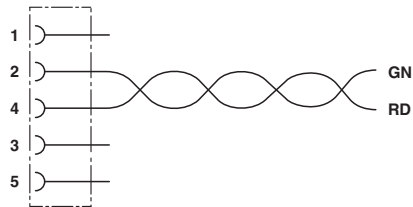
Dimensioned drawing



M12 flush-type connector

Bus system flat-type plug - SACCEC-M12FSB-2CON-M16/10-910 - 1525911

Circuit diagram



Contact assignment of the M12 socket

Phoenix Contact 2015 © - all rights reserved
<http://www.phoenixcontact.com>