

Printed-circuit board connector - GMSTBVA 2,5 HC/ 4-G-7,62 - 1758179

Please be informed that the data shown in this PDF Document is generated from our Online Catalog. Please find the complete data in the user's documentation. Our General Terms of Use for Downloads are valid (<http://phoenixcontact.com/download>)

Header, Nominal current: 16 A, Rated voltage (III/2): 630 V, Number of positions: 4, Pitch: 7.62 mm, Color: green, Contact surface: Tin, Mounting: Soldering




Why buy this product

- CR-MSTB coding sections as protection against mismatching
- GMSTBVA 2,5 HC vertical headers for use in combination with GMSTB 2,5 HCV plugs
- Compact 7.62 mm pitch



Key commercial data

| | |
|--------------------------------------|---|
| Packing unit | 50 pc |
| Minimum order quantity | 50 pc |
| GTIN |  4 046356 343695 |
| Weight per Piece (excluding packing) | 2.17 g |
| Custom tariff number | 85366990 |
| Country of origin | Germany |

Technical data

Dimensions

| | |
|----------------|----------|
| Length | 8.6 mm |
| Pitch | 7.62 mm |
| Dimension a | 22.86 mm |
| Pin dimensions | 1 x 1 mm |
| Hole diameter | 1.4 mm |

General

| | |
|-----------------------------|----------------------|
| Range of articles | GMSTBVA 2,5 HC/...-G |
| Insulating material group | I |
| Rated surge voltage (III/3) | 6 kV |
| Rated surge voltage (III/2) | 6 kV |
| Rated surge voltage (II/2) | 6 kV |

Printed-circuit board connector - GMSTBVA 2,5 HC/ 4-G-7,62 - 1758179

Technical data

General

| | |
|---|--------|
| Rated voltage (III/3) | 400 V |
| Rated voltage (III/2) | 630 V |
| Rated voltage (II/2) | 630 V |
| Connection in acc. with standard | EN-VDE |
| Nominal current I _N | 16 A |
| Maximum load current | 16 A |
| Insulating material | PA |
| Inflammability class according to UL 94 | V0 |
| Color | green |
| Number of positions | 4 |

Classifications

eCl@ss

| | |
|------------|----------|
| eCl@ss 4.0 | 272607xx |
| eCl@ss 4.1 | 27260701 |
| eCl@ss 5.0 | 27260701 |
| eCl@ss 5.1 | 27260701 |
| eCl@ss 6.0 | 27260704 |
| eCl@ss 7.0 | 27440402 |
| eCl@ss 8.0 | 27440402 |

ETIM

| | |
|----------|----------|
| ETIM 3.0 | EC001121 |
| ETIM 4.0 | EC002637 |
| ETIM 5.0 | EC002637 |

UNSPSC

| | |
|---------------|----------|
| UNSPSC 6.01 | 30211810 |
| UNSPSC 7.0901 | 39121409 |
| UNSPSC 11 | 39121409 |
| UNSPSC 12.01 | 39121409 |
| UNSPSC 13.2 | 39121409 |

Approvals

Approvals

Approvals

UL Recognized / cUL Recognized / EAC / cULus Recognized

Printed-circuit board connector - GMSTBVA 2,5 HC/ 4-G-7,62 - 1758179

Approvals

Ex Approvals

Approvals submitted

Approval details

| | | |
|--------------------------------|--------|-------|
| UL Recognized | | |
| | B | D |
| Nominal current I _N | 18.5 A | 10 A |
| Nominal voltage U _N | 300 V | 300 V |

| | | |
|--------------------------------|--------|-------|
| cUL Recognized | | |
| | B | D |
| Nominal current I _N | 18.5 A | 10 A |
| Nominal voltage U _N | 300 V | 300 V |

EAC

| | | |
|------------------|--|--|
| cULus Recognized | | |
|------------------|--|--|

Accessories

Additional products

Plug - GMSTB 2,5 HCV/ 4-ST-7,62 - 1714294



Plug component, Nominal current: 16 A, Rated voltage (III/2): 1000 V, Number of positions: 4, Pitch: 7.62 mm, Connection method: Screw connection, Color: green, Contact surface: Tin

Printed-circuit board connector - GMSTBVA 2,5 HC/ 4-G-7,62 - 1758179

Accessories

Base strip - GIC 2,5 HC/ 4-G-7,62 - 1745807

Header, Nominal current: 16 A, Rated voltage (III/2): 630 V, Number of positions: 4, Pitch: 7.62 mm, Color: green, Contact surface: Tin, Mounting: Soldering



Printed-circuit board connector - GICV 2,5 HC/ 4-G-7,62 - 1756508

Header, Nominal current: 16 A, Rated voltage (III/2): 630 V, Number of positions: 4, Pitch: 7.62 mm, Color: green, Contact surface: Tin, Mounting: Soldering



Printed-circuit board connector - GMVSTBR 2,5 HV/ 4-ST-7,62 - 1774467

Plug component, Nominal current: 12 A, Rated voltage (III/2): 630 V, Number of positions: 4, Pitch: 7.62 mm, Connection method: Screw connection, Color: green, Contact surface: Tin



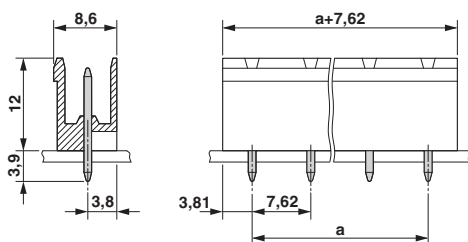
Printed-circuit board connector - GMVSTBW 2,5 HV/ 4-ST-7,62 - 1927221

Plug component, Nominal current: 12 A, Rated voltage (III/2): 630 V, Number of positions: 4, Pitch: 7.62 mm, Connection method: Screw connection, Color: green, Contact surface: Tin

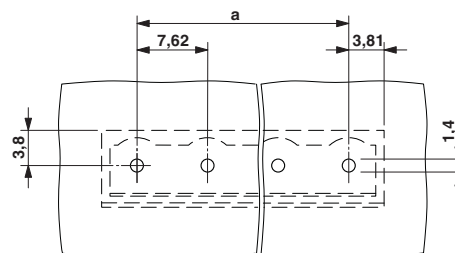


Drawings

Dimensioned drawing

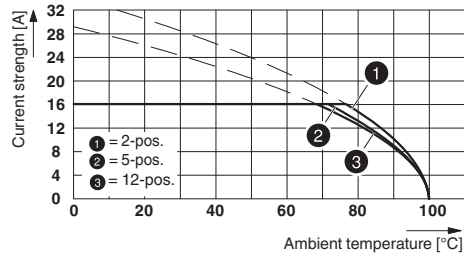


Drilling diagram



Printed-circuit board connector - GMSTBVA 2,5 HC/ 4-G-7,62 - 1758179

Diagram



Type: GMSTB 2.5 HCV/...-ST-7.62(-LR) with GMSTBVA 2.5 HC/...-G-7.62(-LR)