

# Wiha ESD tools.

For all work in sensitive electronic applications.



**Wiha. Premium Tools  
for Professionals.**

# Wiha ESD tools.

For use on electrostatically sensitive components.



## Wiha ESD tools.

The most serious danger when working with electronic components is posed by electrostatic discharges. Because even with low discharge levels not perceived by people, sensitive structures within components can be damaged or destroyed. Those who wish to counteract this problem must take various aspects into account: ESD-safe workstations where electrostatic discharge is safely channelled to earth, electrostatically discharging shoes, workwear and an ESD armband with spiral cable that discharges voltage softly

and safely via a large resistance (approx. 1 Meg-Ohm) from the operator to earth. A further precondition is that the tools used are also electrostatically safe.

Wiha's ESD tools are equipped with electrostatically discharging (dissipative) handles that have a defined surface resistance of  $10^6 - 10^9$  Ohms. That guarantees "soft discharging" within a set period of time and in a controlled and safe manner, so that sensitive components cannot be damaged. Wiha ESD tools are in accordance with the ESD standard IEC 61340-5-1.



Contents	
Wiha SoftFinish® ESD screwdrivers	4 – 6
Wiha Precision ESD precision screwdrivers	7 – 10
Wiha Ceramic non-static adjustment tools	11
Wiha SYSTEM 4 ESD 4 mm reversible blade programme	12 – 14
Wiha SYSTEM 6 ESD 6 mm reversible blade programme	15 – 17
Wiha Torque ESD screwdrivers	18 – 19
Wiha ESD bit holders	20 – 21
Wiha Professional ESD pliers	22 – 25
Wiha Professional ESD electronic tweezers	26 – 29
Wiha dialMax ESD dial calliper	30
Wiha ESD application sets	31

**Safety note:**  
 Wiha ESD tools are non-insulating, and are therefore not suitable for work on live parts.

**Our large ESD product range makes it easy for you to find the right tool for your ESD applications:**

- SoftFinish® ESD screwdrivers
- Precision ESD screwdrivers
- Ceramic tuning and adjusting screwdrivers
- SYSTEM 6 ESD 6 mm interchangeable blades range
- SYSTEM 4 ESD 4 mm interchangeable blades range
- Torque ESD torque screwdrivers
- ESD bit holders
- ESD pliers
- ESD electronics tweezers
- ESD dial gauge vernier callipers
- ESD application sets

# Wiha SoftFinish® ESD.

For use on electrostatically sensitive components.



The SoftFinish® ESD screwdrivers feature an impressive and ergonomic multi-component handle.



## Wiha SoftFinish® ESD:

- Dissipative handle designed to discharge uniformly, surface resistance  $10^6 - 10^9$  Ohm
- Meets ESD standard IEC 61340-5-1
- Ergonomic SoftFinish® multicomponent handle guarantees comfortable work and optimised handling
- Blade made of high-quality CVM steel, through hardened and chrome plated
- Wiha ChromTop® blade tip ensure a perfect fit in every screw head



EPA

Wiha SoftFinish® ESD screwdrivers have a surface resistance of  $10^6 - 10^9$  Ohm.

### Safety Notice:

Wiha ESD screwdrivers are non-insulated, therefore not suitable for working on live parts.

### For slotted, Phillips and Pozidriv screws.



**302ESD** SoftFinish® ESD slotted screwdriver.  
Dissipative handle, ESD-safe.

Blade: High quality chrome-vanadium-molybdenum steel, through hardened, chrome-plated.  
Wiha ChromTop® finish on tip for a perfect fit every time.

Handle: Ergonomic Wiha SoftFinish® multi-component handle with roll-off protection. Surface resistance  $10^6 - 10^9$  Ohm.

Standards: IEC 61340-5-1.

Application: For working on electrostatically sensitive components.

Order-No.	①	↔	⊖	●	↔	+	↔
08179 9	2.5	75	0.4	2.5	179	23	10
27150 3	3.0	100	0.4	3.0	204	23	10
27151 0	4.0	100	0.8	4.0	211	30	10
08182 9	5.5	125	1.0	5.5	236	30	10
08183 6	6.5	150	1.2	6.0	268	36	10

### For slotted, Phillips and Pozidriv screws.



**302ESD** SoftFinish® ESD slotted screwdriver Stubby.  
Dissipative handle, ESD-safe.

Blade: High quality chrome-vanadium-molybdenum steel, through hardened, chrome-plated.  
Wiha ChromTop® finish on tip for a perfect fit every time.

Handle: Ergonomic Wiha SoftFinish® multi-component handle with roll-off protection. Surface resistance  $10^6 - 10^9$  Ohm.

Standards: IEC 61340-5-1.

Application: For working on electrostatically sensitive components.

Order-No.	①	↔	⊖	●	↔	+	↔
32151 2	4.0	25	0.8	4.0	81	34	10
32152 9	5.5	25	1.0	5.5	81	34	10
32153 6	6.5	25	1.2	6.5	81	34	10



**311ESD** SoftFinish® ESD Phillips screwdriver.  
Dissipative handle, ESD-safe.

Blade: High quality chrome-vanadium-molybdenum steel, through hardened, chrome-plated.  
Wiha ChromTop® finish on tip for a perfect fit every time.

Handle: Ergonomic Wiha SoftFinish® multi-component handle with roll-off protection. Surface resistance  $10^6 - 10^9$  Ohm.

Standards: IEC 61340-5-1.

Application: For working on electrostatically sensitive components.

Order-No.	⊕	↔	●	↔	+	↔
08184 3	PH0	60	3.0	164	23	10
08185 0	PH1	80	4.5	191	30	10
08186 7	PH2	100	6.0	218	36	10



**311ESD** SoftFinish® ESD Phillips screwdriver Stubby.  
Dissipative handle, ESD-safe.

Blade: High quality chrome-vanadium-molybdenum steel, through hardened, chrome-plated.  
Wiha ChromTop® finish on tip for a perfect fit every time.

Handle: Ergonomic Wiha SoftFinish® multi-component handle with roll-off protection. Surface resistance  $10^6 - 10^9$  Ohm.

Standards: IEC 61340-5-1.

Application: For working on electrostatically sensitive components.

Order-No.	⊕	↔	●	↔	+	↔
32154 3	PH01	25	4.5	81	34	10
32155 0	PH02	25	6.0	81	34	10



**313ESD** SoftFinish® ESD Pozidriv screwdriver.  
Dissipative handle, ESD-safe.

Blade: High quality chrome-vanadium-molybdenum steel, through hardened, chrome-plated.  
Wiha ChromTop® finish on tip for a perfect fit every time.

Handle: Ergonomic Wiha SoftFinish® multi-component handle with roll-off protection. Surface resistance  $10^6 - 10^9$  Ohm.

Standards: IEC 61340-5-1.

Application: For working on electrostatically sensitive components.

Order-No.	⊕	↔	●	↔	+	↔
26928 9	PZ0	60	3.0	164	23	10
26929 6	PZ1	80	4.5	191	30	10



**313ESD** SoftFinish® ESD Pozidriv screwdriver Stubby.  
Dissipative handle, ESD-safe.

Blade: High quality chrome-vanadium-molybdenum steel, through hardened, chrome-plated.  
Wiha ChromTop® finish on tip for a perfect fit every time.

Handle: Ergonomic Wiha SoftFinish® multi-component handle with roll-off protection. Surface resistance  $10^6 - 10^9$  Ohm.

Standards: IEC 61340-5-1.

Application: For working on electrostatically sensitive components.

Order-No.	⊕	↔	●	↔	+	↔
32156 7	PZ01	25	4.5	81	34	10
32157 4	PZ02	25	6.0	81	34	10

# Wiha SoftFinish® ESD.

For use on electrostatically sensitive components.

For TORX® screws. Bit holder.



**362ESD** SoftFinish® ESD TORX® screwdriver.  
Dissipative handle, ESD-safe.

Blade: High quality chrome-vanadium-molybdenum steel, through hardened, chrome-plated.

Wiha ChromTop® finish on tip for a perfect fit every time.

Handle: Ergonomic Wiha SoftFinish® multi-component handle with roll-off protection. Surface resistance  $10^6 - 10^9$  Ohm.

Standards: IEC 61340-5-1.

Application: For working on electrostatically sensitive components.

Order-No.	⊕	⊖	⊕	⊖	⊕	⊖
31432 3	T3	60	2.5	164	23	10
27148 0	T4	60	2.5	164	23	10
27641 6	T5	60	3.5	164	23	10
27149 7	T6	60	3.5	164	23	10
31901 4	T7	60	3.5	164	23	10
22436 3	T8	60	3.5	164	23	10
27145 9	T9	60	4.0	171	30	10
27144 2	T10	80	4.0	191	30	10
27146 6	T15	80	4.0	191	30	10
27147 3	T20	100	4.0	218	36	10



**387ESD** ESD bit holder with handle, quick release holder, 1/4".  
Dissipative handle, ESD-safe.

Handle: Ergonomic Wiha SoftFinish® multi-component handle with roll-off protection. Surface resistance  $10^6 - 10^9$  Ohm.

Standards: Handle: IEC 61340-5-1.

Output: DIN 3126, ISO 1173, style D 6,3, F 6,3, double bits.

Input: DIN 3126, ISO 1173, style E 6,3.

Bit holder: Stainless steel with retaining ring.

Application: For working on electrostatically sensitive components.

With integrated CentroFix bit holder, suitable for all bits and bit drills with the style C 6,3, E 6,3 or double bits.

Extra: True single-handed operation, extremely high retention force of bits (up to 20 kg) and virtually no play between bit and holder thanks to special closing and holding mechanism.

Order-No.	⊖	⊖	⊖	⊖
32161 1	1/4	38	148	30

#### Safety Notice:

Wiha ESD screwdrivers are non-insulated, therefore not suitable for working on live parts.

Sets.



**302ESD HK5 01** SoftFinish® ESD slotted/ Phillips screwdriver set, 5 pcs.  
Dissipative handle, ESD-safe.

Blade: High quality chrome-vanadium-molybdenum steel, through hardened, chrome-plated.

Wiha ChromTop® finish on tip for a perfect fit every time.

Handle: Ergonomic Wiha SoftFinish® multi-component handle with roll-off protection. Surface resistance  $10^6 - 10^9$  Ohm.

Standards: IEC 61340-5-1.

Application: For working on electrostatically sensitive components.

Order-No.	Series				⊖
27252 4	302ESD HK5 01				1
⊖	302ESD	3.0x100	4.0x100		
⊕	311ESD	PH0x60	PH1x80	PH2x100	



**362ESD K5** SoftFinish® ESD TORX® screwdriver set, 5 pcs.  
Dissipative handle, ESD-safe.

Blade: High quality chrome-vanadium-molybdenum steel, through hardened, chrome-plated.

Wiha ChromTop® finish on tip for a perfect fit every time.

Handle: Ergonomic Wiha SoftFinish® multi-component handle with roll-off protection. Surface resistance  $10^6 - 10^9$  Ohm.

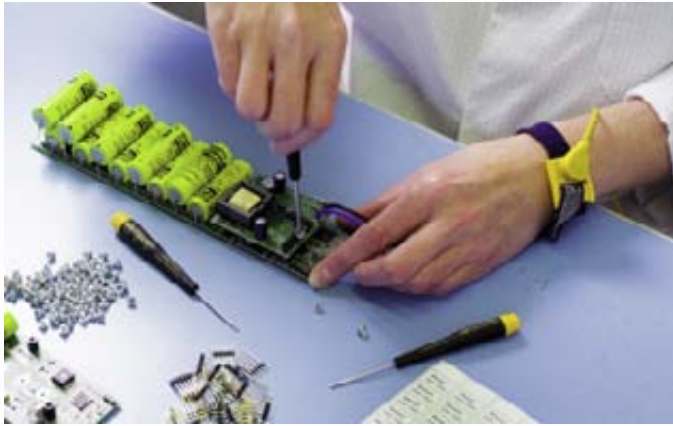
Standards: IEC 61340-5-1.

Application: For working on electrostatically sensitive components.

Order-No.	Series				⊖
27253 1	362ESD K5				1
⊕	362ESD	T6x60	T8x60	T9x60	
		T10x80	T15x80		

# Wiha Precision ESD.

The static dissipative precision screwdriver.



The dissipative Precision ESD – for working on electrostatically sensitive components.



EPA

Wiha Precision ESD screwdrivers have a surface resistance of  $10^6 - 10^9$  Ohm.



The rotating cap with contact area makes incremental adjustment quick and easy.



## Wiha Precision ESD:

- Dissipative handle designed to discharge uniformly, surface resistance  $10^6 - 10^9$  Ohm
- Meets ESD standard IEC 61340-5-1
- Rotating cap with large surface for extra fast working
- Large handle end for powerful tightening and loosening screws
- Wiha ChromTop®-finish on tip for a perfect fit every time

## For slotted screws.



272

**Precision ESD slotted screwdriver.**  
**Dissipative handle, ESD-safe.**

- Blade: High quality chrome-vanadium-molybdenum steel, through hardened, chrome-plated.  
Wiha ChromTop® finish on tip for a perfect fit every time.
- Handle: Precision handle with rotating cap, surface resistance  $10^6 - 10^9$  Ohm.
- Standards: IEC 61340-5-1.
- Application: For working on electrostatically sensitive components.

Order-No.	①	↔	⊘	●	↔	↔	⊞	
07634	4	1.5	40	0.25	2.0	120	12.5	10
07635	1	2.0	40	0.40	2.0	120	12.5	10
07636	8	2.5	50	0.40	2.5	145	13.0	10
07637	5	3.0	50	0.50	3.0	145	13.0	10
07638	2	3.5	60	0.60	3.5	170	14.0	10
07639	9	4.0	60	0.80	4.0	170	14.0	10

### Safety Notice:

Wiha ESD screwdrivers are non-insulated, therefore not suitable for working on live parts.



# Wiha Precision ESD.

The static dissipative precision screwdriver.

## For Phillips and Pozidriv screws.



**273** Precision ESD Phillips screwdriver.  
Dissipative handle, ESD-safe.

Blade: High quality chrome-vanadium-molybdenum steel, through hardened, chrome-plated.  
Wiha ChromTop® finish on tip for a perfect fit every time.

Handle: Precision handle with rotating cap, surface resistance  $10^6 - 10^9$  Ohm.

Standards: IEC 61340-5-1.

Application: For working on electrostatically sensitive components.

Order-No.	⊕	↔	●	↔	↔	↔
28053 6	PH000	40	2.0	120	12.5	10
07640 5	PH00	40	2.0	120	12.5	10
07641 2	PH0	50	3.0	145	13.0	10
07642 9	PH1	60	4.0	170	14.0	10



**274** Precision ESD Pozidriv screwdriver.  
Dissipative handle, ESD-safe.

Blade: High quality chrome-vanadium-molybdenum steel, through hardened, chrome-plated.  
Wiha ChromTop® finish on tip for a perfect fit every time.

Handle: Precision handle with rotating cap, surface resistance  $10^6 - 10^9$  Ohm.

Standards: IEC 61340-5-1.

Application: For working on electrostatically sensitive components.

Order-No.	⊕	↔	●	↔	↔	↔
07643 6	PZ1	60	4.0	170	14	10

## For hex nuts and hex socket screws.



**275** Precision ESD hex screwdriver.  
Dissipative handle, ESD-safe.

Blade: High quality chrome-vanadium-molybdenum steel, through hardened, chrome-plated.  
Wiha ChromTop® finish on tip for a perfect fit every time.

Handle: Precision handle with rotating cap, surface resistance  $10^6 - 10^9$  Ohm.

Standards: IEC 61340-5-1.

Application: For working on electrostatically sensitive components.

Order-No.	⊙	↔	↔	↔	↔
27707 9	0.7	40	120	12.5	10
27708 6	0.9	40	120	12.5	10
07644 3	1.3	40	120	12.5	10
07645 0	1.5	50	145	13.0	10
07646 7	2	50	145	13.0	10
07647 4	2.5	60	170	14.0	10
07648 1	3	60	170	14.0	10
32315 8	4	60	170	14.0	10



**276** Precision ESD ball end hex screwdriver.  
Dissipative handle, ESD-safe.

Blade: High quality chrome-vanadium-molybdenum steel, through hardened, chrome-plated.  
Wiha ChromTop® finish on tip for a perfect fit every time.

Handle: Precision handle with rotating cap, surface resistance  $10^6 - 10^9$  Ohm.

Standards: IEC 61340-5-1.

Application: For working on electrostatically sensitive components.

Extra: The ball end enables the user to work at angles up to 25°.

Order-No.	⊙	↔	↔	↔	↔
07649 8	1.5	50	145	13.0	10
07650 4	2	50	145	13.0	10
07651 1	2.5	60	170	14.0	10
07652 8	3	60	170	14.0	10



**277** Precision ESD hex nut driver.  
Dissipative handle, ESD-safe.

Blade: Chrome-vanadium steel, through hardened, chrome-plated.

Handle: Precision handle with rotating cap, surface resistance  $10^6 - 10^9$  Ohm.

Standards: IEC 61340-5-1.

Application: For working on electrostatically sensitive components.

Order-No.	⊙	↔	↔	↔	↔	↔
32312 7	1.5	60	2.5	-	155	13.0
32313 4	2.0	60	2.9	-	155	13.0
07653 5	2.5	60	4.0	4.0	155	13.0
07654 2	3	60	5.0	5.0	155	13.0
07655 9	3.5	60	5.3	6.0	155	13.0
07656 6	4	60	5.5	6.0	155	13.0
32314 1	4.5	60	6.2	7.0	155	13.0
07657 3	5	60	6.8	7.0	155	13.0
07658 0	5.5	60	7.6	8.0	170	14.0

### For TORX® screws.



**278** Precision ESD TORX® screwdriver.  
**Dissipative handle, ESD-safe.**  
 Blade: High quality chrome-vanadium-molybdenum steel, through hardened, chrome-plated. Wiha ChromTop® finish on tip for a perfect fit every time.  
 Handle: Precision handle with rotating cap, surface resistance 10<sup>6</sup> - 10<sup>9</sup> Ohm.  
 Standards: IEC 61340-5-1.  
 Application: For working on electrostatically sensitive components.

Order-No.	⊛	↔	●	↔	↔	↔
21256 8	T3	40	2.5	120	12.5	10
21255 1	T4	40	2.5	120	12.5	10
07659 7	T5	40	2.5	120	12.5	10
07660 3	T6	40	2.5	120	12.5	10
07661 0	T7	40	2.5	120	12.5	10
07662 7	T8	40	2.5	120	12.5	10
07663 4	T9	50	3.0	145	13.0	10
07664 1	T10	50	3.0	145	13.0	10
07665 8	T15	60	3.5	170	14.0	10
07666 5	T20	60	4.0	170	14.0	10

### For TORX PLUS® screws. Chip lifter.



**278IP** Precision ESD TORX PLUS® screwdriver.  
**Dissipative handle, ESD-safe.**  
 Blade: High quality chrome-vanadium-molybdenum steel, through hardened, chrome-plated. Wiha ChromTop® finish on tip for a perfect fit every time.  
 Handle: Precision handle with rotating cap, surface resistance 10<sup>6</sup> - 10<sup>9</sup> Ohm.  
 Standards: IEC 61340-5-1.  
 Application: For working on electrostatically sensitive components.

Order-No.	⊛	↔	●	↔	↔	↔
28198 4	4IP	40	2.5	120	12.5	10
27761 1	5IP	40	2.5	120	12.5	10
27762 8	6IP	40	2.5	120	12.5	10
27763 5	7IP	40	2.5	120	12.5	10
27764 2	8IP	40	2.5	120	12.5	10
27765 9	9IP	50	3.0	145	13.0	10
27766 6	10IP	50	3.0	145	13.0	10
27767 3	15IP	60	3.5	170	14.0	10



**278R** Precision ESD TORX® MagicSpring® screwdriver.  
**Dissipative handle, ESD-safe.**  
**Retaining spring holds TORX® screws in place.**  
 Blade: High quality chrome-vanadium-molybdenum steel, through hardened, chrome-plated. Wiha ChromTop® finish on tip for a perfect fit every time.  
 Handle: Precision handle with rotating cap, surface resistance 10<sup>6</sup> - 10<sup>9</sup> Ohm.  
 Standards: IEC 61340-5-1.  
 Application: For working on electrostatically sensitive components.

Order-No.	⊛	↔	●	↔	↔	↔
27748 2	T6	40	2.5	120	12.5	10
27749 9	T7	40	2.5	120	12.5	10
27759 8	T8	40	2.5	120	12.5	10
27750 5	T9	50	3.0	145	13.0	10
27751 2	T10	50	3.0	145	13.0	10
27752 9	T15	60	3.5	170	14.0	10



**279-10** Precision ESD chip lifter.  
**Dissipative handle, ESD-safe.**  
 Blade: High quality chrome-vanadium-molybdenum steel, through hardened, chrome-plated.  
 Handle: Precision handle, surface resistance 10<sup>6</sup> - 10<sup>9</sup> Ohm.  
 Standards: IEC 61340-5-1.  
 Application: For lifting tight parts on circuit boards.

Order-No.	⊛	↔	↔	↔	↔
07667 2	3.5	50	145	13.0	10

#### Safety Notice:

Wiha ESD screwdrivers are non-insulated, therefore not suitable for working on live parts.

# Wiha Precision ESD.

The static dissipative precision screwdriver.

## ESD screwdriver sets.



**272 K6** Precision ESD slotted/ Phillips screwdriver set, 6 pcs.  
Dissipative handle, ESD-safe.

Blade: High quality chrome-vanadium-molybdenum steel, through hardened, chrome-plated.  
Wiha ChromTop® finish on tip for a perfect fit every time.

Handle: Precision handle with rotating cap, surface resistance  $10^6 - 10^9$  Ohm.

Standards: IEC 61340-5-1.

Application: For working on electrostatically sensitive components.

Extra: Practical plastic rack with hanging holes.  
In plastic box, can be opened and positioned on workbench.

Order-No.	Series					
08463 9	272 K6					1
⊖	272	1.5x40	2.0x40	2.5x50	3.0x50	
⊕	273	PH00x40	PH0x50			

## ESD screwdriver sets.



**277 K6** Precision ESD hex nut driver set, 6 pcs.  
Dissipative handle, ESD-safe.

Blade: Chrome-vanadium steel, through hardened, chrome-plated.

Handle: Precision handle with rotating cap, surface resistance  $10^6 - 10^9$  Ohm.

Standards: IEC 61340-5-1.

Application: For working on electrostatically sensitive components.

Extra: Practical plastic rack with hanging holes.  
In plastic box, can be opened and positioned on workbench.

Order-No.	Series				
32279 3	277 K6				1
⊙	277	2.5x60	3x60	3.5x60	
		4x60	5x60	5.5x60	



**275 K6** Precision ESD hex screwdriver set, 6 pcs.  
Dissipative handle, ESD-safe.

Blade: High quality chrome-vanadium-molybdenum steel, through hardened, chrome-plated.  
Wiha ChromTop® finish on tip for a perfect fit every time.

Handle: Precision handle with rotating cap, surface resistance  $10^6 - 10^9$  Ohm.

Standards: IEC 61340-5-1.

Application: For working on electrostatically sensitive components.

Extra: Practical plastic rack with hanging holes.  
In plastic box, can be opened and positioned on workbench.

Order-No.	Series					
32278 6	275 K6					1
⊙	275	0.9x40	1.3x40	1.5x50		
		2x50	2.5x60	3x60		



**278 K6** Precision ESD TORX® screwdriver set, 6 pcs.  
Dissipative handle, ESD-safe.

Blade: High quality chrome-vanadium-molybdenum steel, through hardened, chrome-plated.  
Wiha ChromTop® finish on tip for a perfect fit every time.

Handle: Precision handle with rotating cap, surface resistance  $10^6 - 10^9$  Ohm.

Standards: IEC 61340-5-1.

Application: For working on electrostatically sensitive components.

Extra: Practical plastic rack with hanging holes.  
In plastic box, can be opened and positioned on workbench.

Order-No.	Series				
26919 7	278 K6				1
⊙	278	T5x40	T6x40	T7x40	
		T8x40	T10x50	T15x60	

# Wiha Ceramic.

The non-static adjustment tool for clean rooms.



The ceramic blade and handle are completely anti-magnetic and anti-static.



With centring head and quick-turning zone for optimum handling.



## Wiha Ceramic:

- Ideal for adjusting electrical components
- Suitable for working in clean rooms
- Anti-static and anti-magnetic handle and blade
- Rotating cap for easy working
- Resistant to mechanical wear, thermal shock stress and acidic corrosion

### For slotted and Phillips screws.



#### 270 Ceramic slotted screwdriver.

Non-static adjustment tool with ceramic blade.

Blade: Made of high-quality special ceramic, anti-static/anti-magnetic.

Handle: Wiha Proturm® Precision handle with rotating cap, anti-static/anti-magnetic.

Application: Specially designed for tuning and adjusting high frequency devices, suited to cleanrooms.

Order-No.	⌀	↔	⊖	⊕	↔	↔	↔
02163 4	0.9	15	0.35	1.75	94.5	12.5	10
02164 1	1.3	15	0.35	1.75	94.5	12.5	10
02167 2	1.8	15	0.35	1.75	94.5	12.5	10
02168 9	2.6	15	0.35	2.6	94.5	12.5	10



#### 271 Ceramic Phillips screwdriver.

Non-static adjustment tool with ceramic blade.

Order-No.	⊕	↔	⊖	↔	↔	↔
02169 6	PH0	15	2.6	94.5	12.5	10



#### 270 HK3 Ceramic slotted/ Phillips screwdriver set, 3 pcs.

Non-static adjustment tool with ceramic blade.

Extra: Delivered in practical plastic box.

Order-No.	Series	↔	↔	↔
02171 9	270 HK3			1
⌀	270	0.9x15	2.6x15	
⊕	271	PH0x15		



# Wiha SYSTEM 4 ESD.

Ideal for precision work.



Convincing variety and quality.  
SYSTEM 4 – a real multi-tasker.



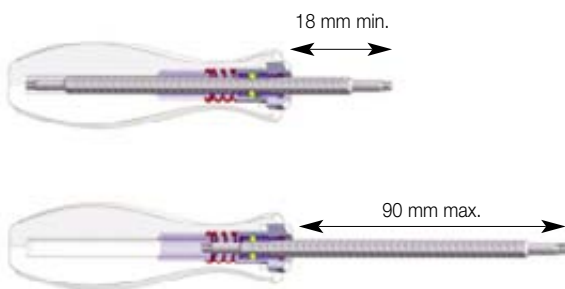
Colour-coded ChromTop® tips  
for maximum clarity.



## Wiha SYSTEM 4:

- Flexible, versatile reversible precision blade system
- Dissipative handle designed to discharge uniformly, surface resistance  $10^6 - 10^9$  Ohm
- Meets ESD standard IEC 61340-5-1
- Ergonomic SoftFinish® multicomponent handle guarantees comfortable work and optimised handling
- Colour-coded blades made of high-quality, tough chrome-vanadium-molybdenum steel, through-hardened, chrome-plated
- Wiha ChromTop® tips ensure a perfect fit every time

With the SoftFinish® telescopic handle,  
the blade length can be adjusted from  
18 – 90 mm.



### SYSTEM 4 ESD handle and reversible blades.



#### 2691ESD SYSTEM 4 SoftFinish®-telescopic ESD handle. Dissipative handle, ESD-safe.

Handle: Ergonomic multi-component handle with roll-off protection. With 4 mm hex retainer for all SYSTEM 4 blades. Enables adjustable blade lengths from 18 - 90 mm. ClickStop ball clamp guarantees a secure hold and rapid blade exchange. Surface resistance 10<sup>6</sup> - 10<sup>9</sup> Ohm.

Standards: IEC 61340-5-1.

Application: For working on electrostatically sensitive components.

Order-No.	⊙	↔	⊖	⊕
31498 9	4.0	105	23	10

### SYSTEM 4 ESD reversible blades.



#### 269 SYSTEM 4 Phillips reversible blade.

Blade: High quality chrome-vanadium-molybdenum steel, through hardened, chrome-plated. Colour-coded Wiha ChromTop® tips.

Order-No.	⊕	⊖	↔	⊙	⊕
00579 5	PH000	PH00	120	4.0	5
00580 1	PH0	PH1	120	4.0	5



#### 269 SYSTEM 4 Pozidriv reversible blade.

Blade: High quality chrome-vanadium-molybdenum steel, through hardened, chrome-plated. Colour-coded Wiha ChromTop® tips.

Order-No.	⊕	⊖	↔	⊙	⊕
03186 2	PZ0	PZ1	120	4.0	5



#### 269 SYSTEM 4 slotted reversible blade.

Blade: High quality chrome-vanadium-molybdenum steel, through hardened, chrome-plated. Colour-coded Wiha ChromTop® tips.

Order-No.	⊙	⊙	⊖	⊖	↔	⊙	⊕
00576 4	1.5	3.0	0.25	0.5	120	4.0	5
00577 1	2.0	3.5	0.4	0.6	120	4.0	5
00578 8	2.5	4.0	0.4	0.8	120	4.0	5



#### 269 SYSTEM 4 TORX® reversible blade.

Blade: High quality chrome-vanadium-molybdenum steel, through hardened, chrome-plated. Colour-coded Wiha ChromTop® tips.

Order-No.	⊕	⊖	↔	⊙	⊕
26122 1	T1	T2	120	4.0	5
26123 8	T3	T4	120	4.0	5
26124 5	T5	T6	120	4.0	5
00597 9	T6	T8	120	4.0	5
00598 6	T7	T9	120	4.0	5
00599 3	T10	T15	120	4.0	5
00600 6	T15	T20	120	4.0	5



#### 269 SYSTEM 4 slotted Phillips reversible blade.

Blade: High quality chrome-vanadium-molybdenum steel, through hardened, chrome-plated. Colour-coded Wiha ChromTop® tips.

Order-No.	⊙	⊕	⊖	↔	⊙	⊕
00601 3	2.0	PH00	0.4	120	4.0	5
00602 0	3.0	PH0	0.5	120	4.0	5
00603 7	4.0	PH1	0.8	120	4.0	5



#### 269 SYSTEM 4 combined ball end hex - hex reversible blade.

Blade: High quality chrome-vanadium-molybdenum steel, through hardened, chrome-plated. Colour-coded Wiha ChromTop® tips.

Extra: The ball end enables the user to work at angles up to 25°.

Order-No.	⊙	⊙	↔	⊙	⊕
00582 5	1.3	1.3	120	4.0	5
00583 2	1.5	1.5	120	4.0	5
00584 9	2	2	120	4.0	5
00585 6	2.5	2.5	120	4.0	5
00586 3	3	3	120	4.0	5
00587 0	4	4	120	4.0	5

#### Safety Notice:

Wiha ESD screwdrivers are non-insulated, therefore not suitable for working on live parts.

# Wiha SYSTEM 4 ESD.

Ideal for precision work.

## SYSTEM 4 bit holder/nut driver blades and set.



**U759 00** SYSTEM 4 bit holder.  
Suitable for C 4 (4 mm) bits.

Blade: Chrome-vanadium steel, through hardened, electro-plated.

Order-No.	Ø	Length	Ø	Length	Quantity
09195 8	4.0	135	4.0	9	1



**269** SYSTEM 4 nut driver.  
For hex nuts.

Blade: High quality chrome-vanadium-molybdenum steel, through hardened, chrome-plated.

Application: For hex nuts.

Order-No.	Ø	Ø	Length	Ø	Quantity
00588 7	1.5	1.8	125	4.0	5
00589 4	2	2.5	125	4.0	5
00590 0	3	-	125	4.0	5
00591 7	3.2	-	125	4.0	5
00592 4	3.5	-	125	4.0	5
00593 1	4	-	125	4.0	5
00594 8	4.5	-	125	4.0	5
00595 5	5	-	125	4.0	5
00596 2	5.5	-	125	4.0	5



**2691 T11 ESD** SYSTEM 4 ESD reversible blades set, 11 pcs.  
Slotted/ Phillips/ TORX®/ hex/ ball end hex.

Blade: High quality chrome-vanadium-molybdenum steel, through hardened, chrome-plated.  
Colour-coded Wiha ChromTop® tips.  
Blade length is adjustable from 18 - 90 mm.

Handle: SYSTEM 4 SoftFinish®-telescopic ESD handle.  
ESD-safe (dissipative), surface resistance  $10^6 - 10^9$  Ohm.  
ClickStop ball clamp guarantees a secure hold and rapid blade exchange.

Extra: In a roll-up pouch made of ESD-safe material.

Order-No.	Series	Quantity
31499 6	2691 T11 ESD	5
<b>2691ESD</b> SYSTEM 4 SoftFinish®-telescopic ESD handle		
⓪	⓪ 269	1.5 - 3.0 2.0 - 3.5 2.5 - 4.0
⊕	⊕ 269	PH000 - PH00 PH0 - PH1
⊗	⊗ 269	T6 - T8 T7 - T9
⦿	⦿ 269	1.5 - 1.5 2 - 2 2.5 - 2.5

## Sets.



**NEW**  
**7000 EB16 ESD** SYSTEM 4 ESD bit set, 16 pcs.  
Mixed sets.

Handle: SYSTEM 4 SoftFinish®-telescopic ESD handle.  
ESD-safe (dissipative), surface resistance  $10^6 - 10^9$  Ohm.  
Enables adjustable bit holder blade length.

Standards: DIN 3126, ISO 1173, style C 4. IEC 61340-5-1.

Case: No danger to electronic components with use of ESD-safe materials.  
Tough, space-saving metal box.

Application: Bit set suitable for smallest screws with electronic components. Flexible working via adjustable blade length and rapid replacement of bit inserts.

Order-No.	Series	Quantity
33503 8	7000 EB16 ESD	1
<b>2691ESD</b> SYSTEM 4 SoftFinish®-telescopic ESD handle		
<b>U759 00</b> SYSTEM 4 bit holder		
⓪	<b>U 750</b>	1x2.0 1x3.0
⊕	<b>U 751</b>	1xPH000 1xPH00 1xPH0 1xPH1
⊗	<b>U 757</b>	1xT3 1xT4 1xT5 1xT6 1xT8
⦿	<b>U 753</b>	1x0.9 1x1.3 1x1.5



**NEW**  
**7000 EB26 ESD** SYSTEM 4 ESD bit set, 26 pcs.  
Mixed sets.

Handle: SYSTEM 4 SoftFinish®-telescopic ESD handle.  
ESD-safe (dissipative), surface resistance  $10^6 - 10^9$  Ohm.  
Enables adjustable bit holder blade length.

Standards: DIN 3126, ISO 1173, style C 4. IEC 61340-5-1.

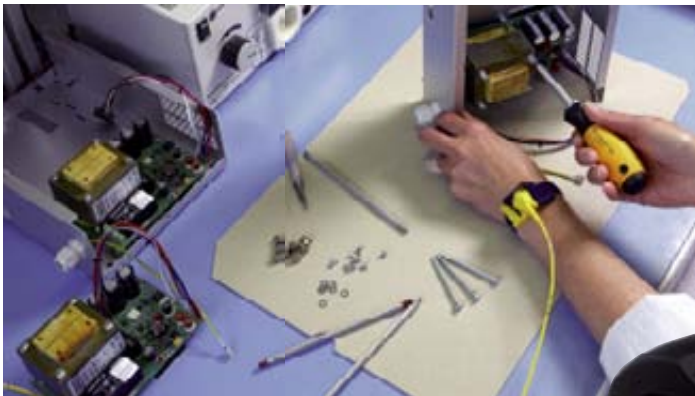
Case: No danger to electronic components with use of ESD-safe materials.  
Tough, space-saving metal box.

Application: Universal set for especially small screws with electronic components.  
Flexible working via adjustable blade length and rapid replacement of bit inserts.

Order-No.	Series	Quantity
33848 0	7000 EB26 ESD	1
<b>2691ESD</b> SYSTEM 4 SoftFinish®-telescopic ESD handle		
<b>U759 00</b> SYSTEM 4 bit holder		
⓪	<b>U 750</b>	1x1.5 1x2.0 1x3.0 1x4.0
⊕	<b>U 751</b>	1xPH000 1xPH00 1xPH0 1xPH1
⊗	<b>U 757</b>	1xT3 1xT4 1xT5 1xT6 1xT7
		1xT8 1xT9 1xT10
⦿	<b>U 753</b>	1x0.7 1x0.9 1x1.3 1x1.5 1x2.0
		1x2.5 1x3.0 1x4.0

# Wiha SYSTEM 6 ESD.

The compact allrounder.



## Wiha SYSTEM 6:

- Flexible, versatile reversible-blade system in industrial quality
- Dissipative handle designed to discharge uniformly, surface resistance  $10^6 - 10^9$  Ohm
- Meets ESD standard IEC 61340-5-1
- Ergonomic SoftFinish® multicomponent handle guarantees comfortable work and optimised handling
- Colour-coded blades made of high-quality, tough chrome-vanadium-molybdenum steel, through-hardened, chrome-plated
- Wiha ChromTop® tips ensure a perfect fit every time

### SYSTEM 6 ESD handle.



#### 284ESD SYSTEM 6 SoftFinish®-telescopic ESD handle. Dissipative handle, ESD-safe.

Handle: Ergonomic multi-component handle with roll-off protection. With 6 mm hex retainer. Enables adjustable blade lengths from 42 - 114 mm. ClickStop ball clamp guarantees a secure hold and rapid blade exchange. Surface resistance  $10^6 - 10^9$  Ohm.

Standards: IEC 61340-5-1.

Application: For working on electrostatically sensitive components.

Order-No.	Ø	115	36	5
31496 5	6.0	115	36	5

#### Safety Notice:

Wiha ESD screwdrivers are non-insulated, therefore not suitable for working on live parts.

# Wiha SYSTEM 6 ESD.

The compact allrounder.

## SYSTEM 6 reversible blades.



### 284 SYSTEM 6 slotted reversible blade.

Blade: High quality chrome-vanadium-molybdenum steel, through hardened, chrome-plated.  
Colour-coded Wiha ChromTop® tips.

Order-No.	⌀	⌀	⊖	⊖	↔	⦿	⊞
27627 0	3.5	4.5	0.6	0.8	150	6.0	5
00629 7	4.0	6.0	0.8	1.0	150	6.0	5
00630 3	5.5	6.5	1.0	1.2	150	6.0	5



### 284 SYSTEM 6 combined slotted-Phillips reversible blade.

Blade: High quality chrome-vanadium-molybdenum steel, through hardened, chrome-plated.  
Colour-coded Wiha ChromTop® tips.

Order-No.	⌀	⊕	⊖	↔	⦿	⊞
00665 5	4.0	PH1	0.8	150	6.0	5
00666 2	6.0	PH2	1.0	150	6.0	5
00667 9	6.5	PH3	1.2	150	6.0	5



### 284 SYSTEM 6 Phillips reversible blade.

Blade: High quality chrome-vanadium-molybdenum steel, through hardened, chrome-plated.  
Colour-coded Wiha ChromTop® tips.

Order-No.	⊕	⊕	↔	⦿	⊞
00631 0	PH1	PH2	150	6.0	5
27628 7	PH2	PH3	150	6.0	5



### 284 SYSTEM 6 Pozidriv reversible blade.

Blade: High quality chrome-vanadium-molybdenum steel, through hardened, chrome-plated.  
Colour-coded Wiha ChromTop® tips.

Order-No.	⊕	⊕	↔	⦿	⊞
00632 7	PZ1	PZ2	150	6.0	5
27629 4	PZ2	PZ3	150	6.0	5

## SYSTEM 6 reversible blades.



### 284 SYSTEM 6 combined ball end hex - hex reversible blade.

Blade: High quality chrome-vanadium-molybdenum steel, through hardened, chrome-plated.  
Colour-coded Wiha ChromTop® tips.

Extra: The ball end enables the user to work at angles up to 25°.

Order-No.	⌀	⌀	↔	⦿	⊞
00635 8	2.5	2.5	150	6.0	5
00636 5	3	3	150	6.0	5
00637 2	4	4	150	6.0	5
00638 9	5	5	150	6.0	5
00639 6	6	6	150	6.0	5



### 284 SYSTEM 6 TORX® reversible blade.

Blade: High quality chrome-vanadium-molybdenum steel, through hardened, chrome-plated.  
Colour-coded Wiha ChromTop® tips.

Order-No.	⦿	⦿	↔	⦿	⊞
00654 9	T6	T8	150	6.0	5
00655 6	T7	T9	150	6.0	5
00656 3	T10	T15	150	6.0	5
00657 0	T20	T25	150	6.0	5
00658 7	T30	T40	150	6.0	5



### 284 SYSTEM 6 TORX® Tamper Resistant reversible blade.

For TORX® screws with locking pin.

Blade: High quality chrome-vanadium-molybdenum steel, through hardened, chrome-plated.  
Colour-coded Wiha ChromTop® tips.  
With borehole in the blade tip.

Order-No.	⦿	⦿	↔	⦿	⊞
27630 0	T6H	T8H	150	6.0	5
27631 7	T7H	T9H	150	6.0	5
27632 4	T10H	T15H	150	6.0	5
27633 1	T20H	T25H	150	6.0	5
27634 8	T30H	T40H	150	6.0	5

#### Safety Notice:

Wiha ESD screwdrivers are non-insulated, therefore not suitable for working on live parts.

## SYSTEM 6 reversible blades.



**284** SYSTEM 6 Tri-Wing® reversible blade.  
For Tri-Wing® security screws.

Blade: High quality chrome-vanadium-molybdenum steel, through hardened, chrome-plated.  
Colour-coded Wiha ChromTop® tips.

Order-No.								
27637 9	TW0	TW1	150	6.0				5
27638 6	TW2	TW3	150	6.0				5
27639 3	TW4	TW5	150	6.0				5



**284** SYSTEM 6 Torq-Set® reversible blade.  
For Torq-Set® security screws.

Blade: High quality chrome-vanadium-molybdenum steel, through hardened, chrome-plated.  
Colour-coded Wiha ChromTop® tips.

Order-No.						
27635 5	TS2	TS4	150	6.0		5
27636 2	TS6	TS8	150	6.0		5



**7802** SYSTEM 6 bit holder.  
Suitable for C 6.3 and E 6.3 (1/4") bits.

Blade: Chrome-vanadium steel, through hardened, chrome-plated.  
Bit retainer made of stainless steel with integrated permanent magnet.

Order-No.					
03882 3	1/4	164	6.0	10	5



**7803** SYSTEM 6 adapter blade.  
Suitable for 1/4" square sockets.

Blade: Chrome-vanadium steel, through hardened, chrome-plated.  
1/4" square drive with ball retainer.

Order-No.				
03883 0	1/4	164	6.0	5



**U109 00** SYSTEM 6 extension blade.  
Suitable for blades.

Blade: Chrome-vanadium steel, through hardened, chrome-plated.  
Extends all SYSTEM 6 blades up to 100 mm.

Order-No.					
08921 4	6.0	166	6.0	11	5

## Sets.



ESD-safe · telescopic

**284ESD T6 01** SYSTEM 6 ESD set of reversible blades, 6 pcs.  
Slotted/ Phillips/ hex/ ball end hex.

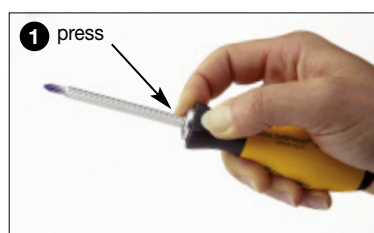
Blade: High quality chrome-vanadium-molybdenum steel, through hardened, chrome-plated.  
Colour-coded Wiha ChromTop® tips.

Blade length is adjustable from 42 - 114 mm.

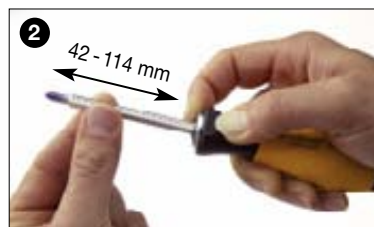
Handle: SYSTEM 6 SoftFinish®-telescopic ESD handle.  
ESD-safe (dissipative), surface resistance  $10^6 - 10^9$  Ohm.  
ClickStop ball clamp guarantees a secure hold and rapid blade exchange.

Extra: Versatile and space-saving, it fits in every toolbox.

Order-No.	Series	
31497 2	284ESD T6 01	1
	284ESD SYSTEM 6 SoftFinish®-telescopic ESD handle	
		<b>284</b> 3.5 - 4.5 4.0 - 6.0 5.5 - 6.5
		<b>284</b> PH1 - PH2
		<b>284</b> 5 - 5



**Press sleeve:**  
=> Blade locking is released



**Press and hold down sleeve:**  
=> Set desired blade length



**Release sleeve:**  
=> Blade is held securely

# Wiha Torque ESD torque range.



EPA

Wiha SoftFinish® ESD screwdrivers have a surface resistance of  $10^6 - 10^9$  Ohm.



In electronic assemblies and ESD protected zones, where electrostatic sensitive components and devices must be grounded, the TorqueVario®-S ESD should be used.



## TorqueVario®-S ESD:

- Dissipative handle designed to discharge uniformly, surface resistance  $10^6 - 10^9$  Ohm
- Meets ESD standard IEC 61340-5-1
- Ergonomic SoftFinish® multicomponent handle guarantees comfortable work and optimised handling
- Ergonomic handle sizes that are proportional to the torque ranges
- Each tool is individually tested and marked with an identification number
- Clearly audible and perceptible click on attaining the pre-set torque
- Interchangeable blades are made from high quality chrome-vanadium steel
- Universal bit holder for all C 6.3 and E 6.3 bits, adapter blade for 1/4" nuts
- Fulfills all accuracy requirements as defined by EN ISO 6789, BS EN 26789 and ASME B 107.14M
- Torque accuracy  $\pm 6\%$  of the pre-set scale value
- Delivered with factory calibration certificate



## TorqueVario®-S ESD with scale.



2882

**TorqueVario®-S ESD torque screwdriver.**  
Torque value can be set via window scale.  
**Automatic release.**

- Handle: Torque infinitely adjustable with Torque-Setter setting tool (also supplied). Ergonomic multi-component handle, made of ESD-safe dissipative material. Handle sizes proportioned to optimise torque setting. Audible and perceptible click when the pre-set torque has been attained.
- Standards: IEC 61340-5-1. EN ISO 6798, BS EN 26789, ASME B107.14M.
- Accuracy:  $\pm 6\%$ , traceable to national standards (•model 0.1-0.6 Nm =  $\pm 10\%$ ).
- Application: For ESD applications where recommended torque settings are important. Use in combination with a Wiha Torque ESD interchangeable blade.
- Extra: Delivered in practical plastic box, incl. factory calibration certificate.

Order-No.	Nm	Ø	→	←	←
26865 7	0.1-0.6•	4	127	23	1
26629 5	0.4-1.0	4	127	23	1
26866 4	0.8-2.0	4	131	30	1
30495 9	1.0-5.0	4	138	36	1

• Accuracy  $\pm 10\%$



### Torque ESD interchangeable blades.



**2889** Torque ESD slotted interchangeable blade.  
For torque ESD screwdrivers.

Blade: High quality chrome-vanadium-molybdenum steel, through hardened, chrome-plated. Wiha ChromTop® finish on tip for a perfect fit every time. Moulded with static dissipative, black plastic material.

Standards: IEC 61340-5-1, DIN ISO 2380.

Application: For ESD applications where recommended torque settings are important. Use in combination with a Wiha ESD torque handle.

Order-No.	⌀	⌀	⌀	↔	↔	max. Nm	📦
26869 5	0.25	1.5	4	175	42	0.15	1
26870 1	0.4	2.0	4	175	42	0.4	1
26871 8	0.5	3.0	4	175	42	0.6	1
26872 5	0.6	3.5	4	175	42	1.1	1
26873 2	0.8	4.0	4	175	42	2.5	1



**2889** Torque ESD Phillips interchangeable blade.  
For torque ESD screwdrivers.

Standards: IEC 61340-5-1, DIN ISO 8764.

Order-No.	⊕	⌀	↔	↔	max. Nm	📦
26877 0	PH000	4	175	42	0.4	1
26876 3	PH00	4	175	42	0.4	1
26875 6	PH0	4	175	42	0.9	1
26878 7	PH1	4	175	42	3.8	1



**2889** Torque ESD Pozidriv interchangeable blade.  
For torque ESD screwdrivers.

Standards: IEC 61340-5-1, DIN ISO 8764.

Order-No.	⊕	⌀	↔	↔	max. Nm	📦
26879 4	PZ0	4	175	42	0.9	1
26880 0	PZ1	4	175	42	3.8	1



**2889** Torque ESD TORX® interchangeable blade.  
For torque ESD screwdrivers.

Standards: IEC 61340-5-1.

Order-No.	⊕	⌀	↔	↔	max. Nm	📦
26881 7	T5	4	175	42	0.4	1
26882 4	T6	4	175	42	0.6	1
26868 8	T7	4	175	42	0.9	1
26883 1	T8	4	175	42	1.3	1
26884 8	T9	4	175	42	2.5	1
26885 5	T10	4	175	42	3.8	1

### Torque ESD bit holder, Torque-Setter ESD and ESD set.



**2889** Torque ESD bit universal holder.  
For torque ESD screwdrivers.

Suitable for C 6.3 and E 6.3 (1/4") bits.

Blade: High quality chrome-vanadium-molybdenum steel, through hardened, chrome-plated.

Sleeve: Made of stainless steel, moulded with dissipative, black plastic material.

Application: For ESD applications where recommended torque settings are important. Use in combination with a Wiha ESD torque handle.

Order-No.	⌀	⌀	↔	📦
27711 6	1/4	4	162	11



**288-900** Torque-Setter ESD.

Setting tool for variable Torque ESD screwdrivers.  
Included in every torque ESD screwdriver delivery.

Blade: Octagonal blade, through hardened, zinc-plated.

Handle: Made of static dissipative plastic material.

Standards: IEC 61340-5-1.

Order-No.	↔	↔	📦
27279 1	80	150	1



**2882 S10** TorqueVario®-S ESD torque screwdriver set, 13 pcs.

Torque value can be set via window scale.

With bit universal holder and 10 Phillips/ Pozidriv/ TORX®/ hex Standard bits.

Extra: Delivered in robust metal box, incl. factory calibration certificate.

Order-No.	Series	📦
27687 4	2882 S10	1
	2882	TorqueVario®-S ESD torque screwdriver 0.8 – 2.0 Nm
	2889	Torque ESD bit universal holder
	288-900	Torque-Setter ESD
⊕	7010 Z	4.0x25 5.5x25
⊕	7011 Z	PH0x25 PH1x25
⊕	7012 Z	PZ0x25 PZ1x25
⊕	7015 Z	T7x25 T8x25 T9x25 T10x25



# Wiha ESD bit holder.



## Wiha ESD bit holder:

- Dissipative handle designed to discharge uniformly, surface resistance  $10^6 - 10^9$  Ohm
- Meets ESD standard IEC 61340-5-1
- Ergonomic SoftFinish® multicomponent handle guarantees comfortable work and optimised handling

## ESD bit holder with quick release holder.



### 387ESD ESD bit holder with handle, quick release holder, 1/4". Dissipative handle, ESD-safe.

- Handle: Ergonomic Wiha SoftFinish® multi-component handle with roll-off protection. Surface resistance  $10^6 - 10^9$  Ohm.
- Standards: Handle: IEC 61340-5-1.  
Output: DIN 3126, ISO 1173, style D 6.3, F 6.3, double bits.  
Input: DIN 3126, ISO 1173, style E 6.3.
- Bit holder: Stainless steel with retaining ring.
- Application: For working on electrostatically sensitive components.  
With integrated CentroFix bit holder, suitable for all bits and bit drills with the style C 6.3, E 6.3 or double bits.
- Extra: True single-handed operation, extremely high retention force of bits (up to 20 kg) and virtually no play between bit and holder thanks to special closing and holding mechanism.

Order-No.	Ø	→	→	→	→
32161 1	1/4	38	148	30	10

## ESD bit holder with retaining ring and Standard bits C 6.3.



### 281-01ESD ESD bit holder with handle, retaining ring, 1/4". Dissipative handle, ESD-safe.

Handle: Ergonomic Wiha SoftFinish® multi-component handle with roll-off protection.

Surface resistance  $10^6 - 10^9$  Ohm.

Universal use for all bits.

Standards: Handle: IEC 61340-5-1.

Drive: DIN 3126, ISO 1173, style D 6.3.

Bit holder: Stainless steel with retaining ring.

Application: For working on electrostatically sensitive components, especially in tight places.

Order-No.	⊙	↔	⊕	▬
32484 1	1/4	57	34	10



### 7010 Z Standard bit, slotted, style C 6.3.

Material: High grade chrome-vanadium steel, through hardened.

Drive: DIN 3126, ISO 1173, style C 6.3.

Application: For all types of screw applications in trade and industry.

Order-No.	⊙	↔	⊖	▬
01623 4	4.5	25	0.6	10
01624 1	5.5	25	0.8	10



### 7010 Z L Standard bit, slotted, style C 6.3.

Material: High grade chrome-vanadium steel, through hardened.

Drive: DIN 3126, ISO 1173, style C 6.3.

Application: For all types of screw applications in trade and industry.

Order-No.	⊙	↔	⊖	▬
01604 3	3.0	39	0.5	10
01607 4	3.5	39	0.6	10
01606 7	4.0	39	0.5	10
01610 4	4.0	39	0.8	10



### 7011 Z Standard bit, Phillips, style C 6.3.

Material: High grade chrome-vanadium steel, through hardened.

Drive: DIN 3126, ISO 1173, style C 6.3.

Application: For all types of screw applications in trade and industry.

Order-No.	⊕	↔	▬
05298 0	PH0	25	10
01657 9	PH1	25	10
01658 6	PH2	25	10

## Standard bits C 6.3.



### 7013 Z Standard bit, hex, style C 6.3.

Material: High grade chrome-vanadium steel, through hardened.

Drive: DIN 3126, ISO 1173, style C 6.3.

Application: For all types of screw applications in trade and industry.

Order-No.	⊙	↔	▬
04011 6	1.5	25	10
01703 3	2.0	25	10
01704 0	2.5	25	10
01705 7	3.0	25	10
01706 4	4.0	25	10
01707 1	5.0	25	10



### 7015 Z Standard bit, TORX®, style C 6.3.

Material: High grade chrome-vanadium steel, through hardened.

Drive: DIN 3126, ISO 1173, style C 6.3.

Application: For all types of screw applications in trade and industry.

Order-No.	⊕	↔	▬
26250 1	T3	25	10
25097 0	T4	25	10
01711 8	T5	25	10
01712 5	T6	25	10
01713 2	T7	25	10
01714 9	T8	25	10
01715 6	T9	25	10
01716 3	T10	25	10



### 7016 Z Standard bit, TORX PLUS®, style C 6.3.

Material: High grade chrome-vanadium steel, through hardened.

Drive: DIN 3126, ISO 1173, style C 6.3.

Application: For all types of screw applications in trade and industry.

Extra: Reinforced profile cross-section transfers approx. 25% more torque than with a TORX® profile.

Order-No.	⊕	↔	▬
25996 9	4IP	25	10
25998 3	5IP	25	10
23173 6	6IP	25	10
23175 0	7IP	25	10
23177 4	8IP	25	10
23179 8	9IP	25	10
23181 1	10IP	25	10

# Wiha Professional ESD.

Precision for electronic professionals.



Harmonious design of the front part of the handle for an optimum finger hold

Double leaf spring for sensitive working

The anti-static, ergonomic handle is fixed to the pliers

Low glare mirror polished finish

Hard, comfortable elastomer zones ensure low friction in the movement range of the fingers

Antistatic arms made of soft, non-slip elastomer are gentle on the parts of the hand that are sensitive to pressure

Precision box joint with long service life



## Wiha Professional ESD:

- Drop-forged from the best selected, suitable carbon steels for the best technical properties
- Cutting edges are additionally induction hardened up to 64 HRC for maximum service life and cutting results
- Finely mirror polished heads provide safety as there are no flaking chrome particles preventing damage to electronic components. Low glare.
- Precision box joint: close fit prevents distortion, low-wear for clearance and jolt-free movement.
- Dual leaf springs and extremely ergonomic multi-component handle provide for comfortable, controlled and sensitive work
- Complete anti-static dissipative handle for controlled dissipation of static charges by means of surface resistance of  $10^6 - 10^9$  Ohm. Suitable for electronics work at ESD workplaces according to IEC 61340-5-1



The Professional ESD diagonal cutter with a broad, pointed head cut soft wires flush.



The Professional ESD needle-nose pliers are predominantly used for fine gripping and bending work.

### Safety Notice:

Wiha Professional ESD pliers are noninsulated, therefore not suitable for working on live parts.

Details of cutting results of cutting pliers.

Symbol	Types of wire	Example	Tensile strength ca. N/mm <sup>2</sup>
○	Soft wire	Copper, aluminium	220 - 250
◐	Medium hard wire	Iron nail	750 - 800
◑	Hard wire	Spring wire, steel nail	1.600 - 1.800
●	Piano wire	Hardened spring steel	2.200 - 2.300

Test wires standardised in DIN ISO 5744



**Diagonal cutter, narrow, pointed shape.**



**Z 40 1 04 Diagonal cutter Professional ESD.**

Standards: DIN ISO 9654. IEC 61340-5-1.  
 Head shape: Narrow, pointed head.  
 Design: Bevelled cutting edges, individually tested, also appropriate for thin, hard wires.  
 Maximum service life of cutting edge achieved through additional inductive hardening to approx. 64 HRC. With opening spring.  
 Material: High alloy carbon steel C 60.  
 Application: For cutting different hardnesses of wires in places which are difficult to access.

Order-No.	mm	II	○	◐	◑	↵	▬
26808 4	115	4 ½	1.0	0.6	0.3	60	5

**Diagonal cutter, broad, pointed shape.**



**Z 41 1 04 Diagonal cutter Professional ESD.**

Standards: DIN ISO 9654. IEC 61340-5-1.  
 Head shape: Wide, pointed head.  
 Design: Bevelled cutting edges, also appropriate for hard wires.  
 Maximum service life of cutting edge achieved through additional inductive hardening to approx. 64 HRC. With opening spring.  
 Material: High alloy carbon steel C 60.  
 Application: All round electronic diagonal cutter for cutting wires of different hardnesses.

Order-No.	mm	II	○	◐	◑	↵	▬
26816 9	115	4 ½	1.4	1.0	0.4	60	5



**Z 40 4 04 Diagonal cutter Professional ESD.**

Standards: DIN ISO 9654. IEC 61340-5-1.  
 Head shape: Extra narrow, short head for working in particularly restricted spaces.  
 Design: Cutting edge almost without bevel for virtually flush cutting, individually tested.  
 Maximum service life of cutting edge achieved through additional inductive hardening to approx. 64 HRC. With opening spring.  
 Material: High alloy carbon steel C 60.  
 Application: For virtually flush cutting copper wire in flat places which are difficult to reach.

Order-No.	mm	II	○	↵	▬
26814 5	115	4 ½	1.0	60	5



**Z 41 3 04 Diagonal cutter Professional ESD.**

Standards: DIN ISO 9654. IEC 61340-5-1.  
 Head shape: Wide, pointed head.  
 Design: Cutting edge without bevel for absolute flush cutting.  
 Maximum service life of cutting edge achieved through additional inductive hardening to approx. 64 HRC. With opening spring.  
 Material: High alloy carbon steel C 60.  
 Application: For absolutely flush cutting of copper wire.

Order-No.	mm	II	○	↵	▬
26821 3	115	4 ½	1.0	60	5



**NEW**  
**Z 40 3 04 Diagonal cutter Professional ESD.**

Standards: DIN ISO 9654. IEC 61340-5-1.  
 Head shape: Narrow, pointed head.  
 Design: Blade without facet, individually inspected, suited to thin, tough wire.  
 Maximum service life of cutting edge achieved through additional inductive hardening to approx. 64 HRC. With opening spring.  
 Material: High alloy carbon steel C 60.  
 Application: For absolutely flush cutting of copper wire in hard-to-reach places.

Order-No.	mm	II	○	↵	▬
33521 2	115	4 ½	1.0	60	5



**Z 41 4 04 Diagonal cutters Professional ESD with wire trapping spring.**

Standards: DIN ISO 9654. IEC 61340-5-1.  
 Head shape: Wide, pointed head.  
 Design: With fixture for trapping ends of wires which have been cut off.  
 Cutting edge with full flush cutter function for virtually flush cutting.  
 Maximum service life of cutting edge achieved through additional inductive hardening to approx. 64 HRC. With opening spring.  
 Material: High alloy carbon steel C 60.  
 Application: For virtually flush cutting copper wire, function for trapping cut off wire.

Order-No.	mm	II	○	↵	▬
26822 0	115	4 ½	1.2	60	5

# Wiha Professional ESD.

Precision for electronic professionals.

## Details of cutting results of cutting pliers.

Symbol	Types of wire	Example	Tensile strength ca. N/mm <sup>2</sup>
○	Soft wire	Copper, aluminium	220 - 250
◌	Medium hard wire	Iron nail	750 - 800
●	Hard wire	Spring wire, steel nail	1.600 - 1.800
●	Piano wire	Hardened spring steel	2.200 - 2.300

Test wires standardised in DIN ISO 5744

### Diagonal cutter, semi-circular shape.



#### Z 43 1 04 Diagonal cutter Professional ESD.

Standards: DIN ISO 9654. IEC 61340-5-1.  
 Head shape: Narrow, semi-circular head.  
 Design: Cutting edge with full flush cutter function for virtually flush cutting. Maximum service life of cutting edge achieved through additional inductive hardening to approx. 64 HRC. With opening spring.  
 Material: High alloy carbon steel C 60.  
 Application: For virtually flush cutting of copper wire in places which are difficult to access.

Order-No.	mm	mm	mm	mm	mm
26826 8	115	4 ½	1.2	60	5

### Oblique end cutters.



#### Z 46 1 04 Oblique end cutting nippers Professional ESD.

Standards: DIN ISO 9654. IEC 61340-5-1.  
 Head shape: Wide head, angled at 29°.  
 Design: Cutting edge with full flush cutter function for virtually flush cutting. Maximum service life of cutting edge achieved through additional inductive hardening to approx. 64 HRC. With opening spring.  
 Material: High alloy carbon steel C 60.  
 Application: For virtually flush cutting of soft wires. Can be used horizontally and vertically.

Order-No.	mm	mm	mm	mm	mm
26835 0	115	4 ½	1.2	78	5



#### Z 44 1 04 Diagonal cutter Professional ESD.

Standards: DIN ISO 9654. IEC 61340-5-1.  
 Head shape: Wide, semi-circular head.  
 Design: Bevelled cutting edges, also appropriate for thin, hard wires. Maximum service life of cutting edge achieved through additional inductive hardening to approx. 64 HRC. With opening spring.  
 Material: High alloy carbon steel C 60.  
 Application: All round electronic diagonal cutter for cutting wires of different hardnesses.

Order-No.	mm	mm	mm	mm	mm	mm
26831 2	115	4 ½	1.4	1.0	0.4	60



#### Z 46 4 04 Oblique end cutting nippers Professional ESD.

Standards: DIN ISO 9654. IEC 61340-5-1.  
 Head shape: Extra narrow head. Cutting edges angled at 40°.  
 Design: Cutting edge with full flush cutter function for virtually flush cutting. Maximum service life of cutting edge achieved through additional inductive hardening to approx. 64 HRC. With opening spring.  
 Material: High alloy carbon steel C 60.  
 Application: For virtually flush cutting thin, soft wires in places which are particularly difficult to access.

Order-No.	mm	mm	mm	mm	mm
26838 1	110	4 ¼	0.6	42	5



#### Z 44 3 04 Diagonal cutter Professional ESD.

Standards: DIN ISO 9654. IEC 61340-5-1.  
 Head shape: Wide, semi-circular head.  
 Design: Cutting edge with full flush cutter function for virtually flush cutting. Maximum service life of cutting edge achieved through additional inductive hardening to approx. 64 HRC. With opening spring.  
 Material: High alloy carbon steel C 60.  
 Application: For virtually flush cutting of soft wires.

Order-No.	mm	mm	mm	mm	mm
26832 9	115	4 ½	1.2	60	5



#### Z 47 1 04 End cutting nippers Professional ESD.

Standards: DIN ISO 9654. IEC 61340-5-1.  
 Head shape: Extra narrow, slim shape.  
 Design: Cutting edge with full flush cutter function for virtually flush cutting. Maximum service life of cutting edge achieved through additional inductive hardening to approx. 64 HRC. With opening spring.  
 Material: High alloy carbon steel C 60.  
 Application: For virtually flush cutting of soft wires in places which are particularly difficult to access.

Order-No.	mm	mm	mm	mm	mm
26839 8	110	4 ¼	0.6	65	5

## End cutters and gripping pliers.



### Z 47 2 04 End cutting nippers Professional ESD.

Standards: DIN ISO 9654. IEC 61340-5-1.  
 Head shape: Wide head.  
 Design: Cutting edge with full flush cutter function for virtually flush cutting. Maximum service life of cutting edge achieved through additional inductive hardening to approx. 64 HRC. With opening spring.  
 Material: High alloy carbon steel C 60.  
 Application: For frontal, virtually flush cutting of thicker, soft wires.

Order-No.	mm	II	III	IV	V
26840 4	115	4 ½	1.4	65	5



### Z 36 0 04 Needle nose pliers Professional ESD.

Standards: DIN ISO 9655. IEC 61340-5-1.  
 Head shape: Straight head.  
 Design: Fine, semi-circular tips. Ridged gripping surfaces. With opening spring.  
 Material: C 45 special tool steel, hardened and tempered.  
 Application: Mainly for precision gripping and bending work.

Order-No.	mm	II	A	B	D	F	IV	V
26799 5	120	4 ¾	9.5	23	6.5	1.4	60	5
27905 9	145	5 ¾	12.0	40	7.5	2.0	93	5



### Z 36 1 04 Needle nose pliers Professional ESD.

Standards: DIN ISO 9655. IEC 61340-5-1.  
 Head shape: Angled at 45°.  
 Design: Fine, semi-circular tips. Smooth gripping surfaces. With opening spring.  
 Material: C 45 special tool steel, hardened and tempered.  
 Application: Mainly for precision gripping and bending work.

Order-No.	mm	II	IV	V
26802 2	120	4 ¾	60	5

## Gripping pliers. Set combinations.



### Z 37 0 04 Round nose pliers Professional ESD.

Standards: DIN ISO 9655. IEC 61340-5-1.  
 Head shape: Round, short jaws.  
 Design: Smooth gripping surfaces. With opening spring.  
 Material: C 45 special tool steel, hardened and tempered.  
 Application: Mainly for precision gripping and bending work.

Order-No.	mm	II	IV	V
26804 6	120	4 ¾	60	5



### Z 38 0 04 Flat nose pliers Professional ESD.

Standards: DIN ISO 9655. IEC 61340-5-1.  
 Head shape: Flat, short jaws.  
 Design: Smooth gripping surfaces. With opening spring.  
 Material: C 45 special tool steel, hardened and tempered.  
 Application: Mainly for precision gripping and bending work.

Order-No.	mm	II	IV	V
26806 0	120	4 ¾	60	5



### Z 99 0 001 04 Professional ESD pliers set, 4 pcs.

**Dissipative tools, electrostatically discharging.**  
 Design: ESD tools manufactured according to IEC 61340-5-1. All pliers of high quality tool steel, hardened and fine-polished. Plier handles electrostatically discharge via all components.  
 Pouch: Light and space-saving storage of tools.

Content: **Diagonal cutter without facet, 115 mm (Z 41 3 04 series)**  
**Diagonal cutter with facet, 115 mm (Z 44 1 04 series)**  
**Angular forward cutters, with minimal facet, 110 mm (Z 46 4 04 series)**  
**Electric needle nose pliers, 120 mm (Z 36 0 04 series)**

Application: Universal set for all cutting work with electronic applications.

Order-No.	Series	V
33507 6	Z 99 0 001 04	1

## Wiha Info

A variety of different pliers are required for electronics applications.

Simply contact us if you require different models for other applications.

# Wiha Professional ESD.

For high standards when it comes to precision and safety.



Thanks to its wide selection of tips, the Professional ESD precision tweezers handle even tricky work effortlessly, for example on sensitive semiconductors.



Depending on the application situation, the tweezers have extra fine, strong or extremely rugged tips

ESD coating

Optimised spring tension and precise symmetry for a firm, secure grasp

Anti-magnetic alloy made of chromium-nickel stainless steel



Tweezers are important tools for any electronics technician to enable the necessary work to be carried out safely in the often small, confined structures of PCBs.



## Wiha Professional ESD electronic tweezers:

- High-quality alloy made of chromium-nickel stainless steel with a high nickel content. Guaranteed 100% anti-magnetic
- ESD-safe (anti-static) due to special ESD coating and suitable for electronics work on ESD workplaces in accordance with IEC 61340-5-1
- Acid-resistant and stainless
- Non-glare surface
- Symmetric, exactly harmonised, precision tips for precise work
- Each piece is individually tested

## Universal tweezers.



### ZP 01 0 14 Universal tweezers Professional ESD.

Standards: IEC 61340-5-1.  
 Design: Smooth gripping surfaces, gripping surfaces without grooves.  
 Non-glare black coated, anti-static.  
 Anti-magnetic and acid-resistant.  
 Material: Special alloyed, non-rusting, chromium-nickel stainless steel.  
 Application: Universal tweezers for all current electronics applications.

Order-No.	mm	Typ		
32318 9	130	AA	19	10



### ZP 46 0 14 Universal tweezers Professional ESD.

Standards: IEC 61340-5-1.  
 Design: Fine-tooth gripping surface, grooved gripping surface.  
 Non-glare black coated, anti-static.  
 Anti-magnetic and acid-resistant.  
 Material: Special alloyed, non-rusting, chromium-nickel stainless steel.  
 Application: Universal tweezers for all current electronics applications.

Order-No.	mm	Typ		
32343 1	145	40	29	10

## Precision tweezers.



### ZP 06 0 14 Precision tweezers Professional ESD.

Standards: IEC 61340-5-1.  
 Design: Smooth gripping surfaces, gripping surfaces without grooves.  
 Non-glare black coated, anti-static.  
 Anti-magnetic and acid-resistant.  
 Material: Special alloyed, non-rusting, chromium-nickel stainless steel.  
 Application: Precision tweezers for gripping and holding electronic components.

Order-No.	mm	Typ		
32347 9	130	GG	19	10



### ZP 07 1 14 Precision tweezers Professional ESD.

Standards: IEC 61340-5-1.  
 Design: Smooth gripping surfaces, gripping surfaces without grooves.  
 Non-glare black coated, anti-static.  
 Anti-magnetic and acid-resistant.  
 Material: Special alloyed, non-rusting, chromium-nickel stainless steel.  
 Application: Precision tweezers for gripping and holding electronic components.

Order-No.	mm	Typ		
32325 7	130	PSF	18	10



### ZP 09 0 14 Precision tweezers Professional ESD.

Standards: IEC 61340-5-1.  
 Design: Smooth gripping surfaces, gripping surfaces without grooves.  
 Non-glare black coated, anti-static.  
 Anti-magnetic and acid-resistant.  
 Material: Special alloyed, non-rusting, chromium-nickel stainless steel.  
 Application: Precision tweezers for gripping and holding electronic components.

Order-No.	mm	Typ		
32326 4	135	SS	13	10

#### Safety note:

Wiha ESD electronic tweezers are non-insulating, and are therefore not suitable for work on live parts.

# Wiha Professional ESD.

For high standards when it comes to precision and safety.

## Precision tweezers.



### ZP 11 0 14 Precision tweezers Professional ESD.

Standards: IEC 61340-5-1.  
 Design: Smooth gripping surfaces, gripping surfaces without grooves.  
 Non-glare black coated, anti-static.  
 Anti-magnetic and acid-resistant.  
 Material: Special alloyed, non-rusting, chromium-nickel stainless steel.  
 Application: Precision tweezers for gripping and holding electronic components.

Order-No.	mm	Typ		
32327 1	120	00	21	10

## Precision tweezers.



### ZP 18 0 14 Precision tweezers Professional ESD.

Standards: IEC 61340-5-1.  
 Design: Smooth gripping surfaces, gripping surfaces without grooves.  
 Non-glare black coated, anti-static.  
 Anti-magnetic and acid-resistant.  
 Material: Special alloyed, non-rusting, chromium-nickel stainless steel.  
 Application: Precision tweezers for gripping and holding electronic components.

Order-No.	mm	Typ		
32334 9	110	5	13	10



### ZP 15 0 14 Precision tweezers Professional ESD.

Standards: IEC 61340-5-1.  
 Design: Smooth gripping surfaces, gripping surfaces without grooves.  
 Non-glare black coated, anti-static.  
 Anti-magnetic and acid-resistant.  
 Material: Special alloyed, non-rusting, chromium-nickel stainless steel.  
 Application: Precision tweezers for gripping and holding electronic components.

Order-No.	mm	Typ		
32329 5	120	2a	16	10



### ZP 20 1 14 Precision tweezers Professional ESD.

Standards: IEC 61340-5-1.  
 Design: Smooth gripping surfaces, gripping surfaces without grooves.  
 Non-glare black coated, anti-static.  
 Anti-magnetic and acid-resistant.  
 Material: Special alloyed, non-rusting, chromium-nickel stainless steel.  
 Application: Precision tweezers for gripping and holding electronic components.

Order-No.	mm	Typ		
32335 6	120	7a	15	10



### ZP 16 0 14 Precision tweezers Professional ESD.

Standards: IEC 61340-5-1.  
 Design: Smooth gripping surfaces, gripping surfaces without grooves.  
 Non-glare black coated, anti-static.  
 Anti-magnetic and acid-resistant.  
 Material: Special alloyed, non-rusting, chromium-nickel stainless steel.  
 Application: Precision tweezers for gripping and holding electronic components.

Order-No.	mm	Typ		
32346 2	110	3c	14	10



### ZP 20 2 14 Precision tweezers Professional ESD.

Standards: IEC 61340-5-1.  
 Design: Smooth gripping surfaces, gripping surfaces without grooves.  
 Non-glare black coated, anti-static.  
 Anti-magnetic and acid-resistant.  
 Material: Special alloyed, non-rusting, chromium-nickel stainless steel.  
 Application: Precision tweezers for gripping and holding electronic components.

Order-No.	mm	Typ		
32336 3	120	7abb	15	10

#### Safety note:

Wiha ESD electronic tweezers are non-insulating, and are therefore not suitable for work on live parts.

### SMD tweezers.



#### ZP 24 0 14 SMD tweezers Professional ESD.

Standards: IEC 61340-5-1.  
 Design: Smooth gripping surfaces, gripping surfaces without grooves.  
 Non-glare black coated, anti-static.  
 Anti-magnetic and acid-resistant.  
 Material: Special alloyed, non-rusting, chromium-nickel stainless steel.  
 Application: SMD special tweezers for horizontal gripping of components.

Order-No.	mm	Typ		
32338 7	120	12	15	10



#### ZP 25 2 14 SMD tweezers Professional ESD.

Standards: IEC 61340-5-1.  
 Design: Smooth gripping surfaces, gripping surfaces without grooves.  
 Non-glare black coated, anti-static.  
 Anti-magnetic and acid-resistant.  
 Material: Special alloyed, non-rusting, chromium-nickel stainless steel.  
 Application: SMD special tweezers for horizontal gripping of components.

Order-No.	mm	Typ		
32340 0	120	13	16	10



#### ZP 25 3 14 SMD tweezers Professional ESD.

Standards: IEC 61340-5-1.  
 Design: Smooth gripping surfaces, gripping surfaces without grooves.  
 Non-glare black coated, anti-static.  
 Anti-magnetic and acid-resistant.  
 Material: Special alloyed, non-rusting, chromium-nickel stainless steel.  
 Application: SMD special tweezers for horizontal gripping of components.

Order-No.	mm	Typ		
32337 0	120	8b	16	10

### SMD tweezers.



#### ZP 50 0 14 SMD tweezers Professional ESD.

Standards: IEC 61340-5-1.  
 Design: Smooth gripping surface, grooved gripping surface.  
 Non-glare black coated, anti-static. Anti-magnetic and acid-resistant.  
 Material: Special alloyed, non-rusting, chromium-nickel stainless steel.  
 Application: SMD special tweezers for gripping and holding horizontally-designed components.

Order-No.	mm	Typ		
32344 8	117	59	14	10



**NEW**

#### ZP 99 0 140 02 SMD Tweezer set Professional ESD, 4 pcs.

**Dissipative tools, electrostatically discharging.**

Design: ESD tools manufactured according to IEC 61340-5-1.  
 All tweezers are ESD-safe (anti-static) via a special ESD coating, acid-resistant, non-rusting and 100% anti-magnetic.

Content: **Universal tweezers, pointed, 130 mm (ZP 01 0 14 series)**  
**Precision tweezers, angular-wide tips, 130 mm (ZP 07 1 14 series)**  
**SMD tweezers, flat gripping surfaces, 120 mm (ZP 25 2 14 series)**  
**SMD tweezers, gripping surface with radius, 117 mm (ZP 50 0 14 series)**

Application: Hand assembly of PCBs with SMD components or re-work activities.

Order-No.	Series	
32349 3	ZP 99 0 140 02	1

## Wiha Info

A variety of different tweezers are required for electronics applications.

Simply contact us if you require different models for other applications.

# Wiha dialMax ESD.

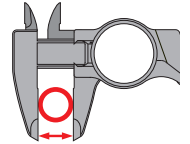
Dial calliper.



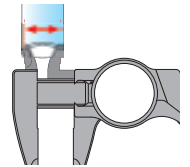
## Wiha dialMax ESD:

- Non-metallic high-tech material with 60% fibre-glass content, extremely high rigidity
- Extremely wear-resistant measuring jaw for precise measurements in the long-term
- Non-corrosive, non-magnetic, hardly conductive and electrically insulated
- Resistant to chemicals (alkalis, petrol, oil, grease, etc.)
- Thermal stability of the measuring surfaces: short-term up to 180°C, continuous 100 – 120°C
- Practical ratchet guarantees uniform clamping force of the measuring jaw
- Unlike metal callipers, prevents damage to delicate surfaces
- ESD-safe (dissipative), surface resistance  $10^6 - 10^9$  Ohm
- Meets ESD standard IEC 61340-5-1

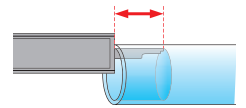
Outside measuring



Inside measuring



Depth measuring



## dialMax ESD.



### 411 210 8 Dial calliper dialMax ESD, reading 0.1 mm.

- Material: Calliper made of ESD-safe material.  
 Scale: Dial, diameter 35 mm.  
 Reading: 0.1 mm; 1 dial rotation represents 10 mm.  
 Accuracy as per DIN 862.  
 Packaging: Blister packed.  
 Standards: IEC 61340-5-1.  
 Application: For use with electrostatically sensitive components.  
 For outside, inside and depth measurements.  
 Extra: Now possible: measurements in ESD protection zones.  
 Impact resistant dial can be recalibrated to zero.

Order-No.	150	6	45	5
31439 2				

# Wiha ESD application sets.

The right tool for any application.



## ESD application sets.



**NEW**
  
**9300-015**

**Wiha operator kit, 5 pcs.**

**Dissipative tools, electrostatically discharging.**

**Design:** ESD tools manufactured according to IEC 61340-5-1. Maximum protection of electronic components from electrostatically discharging tools and packaging.

**Pouch:** Handy leather bag, ideal for all overall pockets. Safe storing of tools directly in the overall. No danger of injury to users or damage to workwear from sharp or loose tools in overall pockets.

**Content:** Professional ESD universal tweezers (ZP 01 0 14 series)

**Wiha Precision ESD screwdrivers:**

- Slotted screwdriver, 2.5x50 (272 series)
- Phillips screwdriver, PH0x50 (273 series)

**SMD belt shears** (246 series)

**Dust and dirt brush** (246 series)

**Application:** The most important tools for automatic insertion machines in continuous operation.

Order-No.	Series	
33504 5	9300-015	1

## ESD application sets.



**NEW**
  
**9300-016**

**Wiha electronic assembling kit, 9 pcs.**

**Dissipative tools, electrostatically discharging.**

**Design:** ESD tools manufactured according to IEC 61340-5-1. Diagonal cutters without facet especially suitable for clean and smooth cutting of wired components. Wide selection of current screwdrivers for electronic applications. With universal tweezers for assembly of PCBs or for SMD re-work activities.

**Pouch:** Robust and space-saving storage of tools.

**Content:** Diagonal cutter without facet, 115 mm (Z 41 3 04 series)

**Electric needle nose pliers**, 120 mm (Z 36 0 04 series)

**Professional ESD universal tweezers** (ZP 01 0 14 series)

**Wiha Precision ESD screwdrivers:**

- Slotted screwdriver, 2.0x40 / 2.5x50 (272 series)
- Phillips screwdriver, PH00x40 / PH0x50 (273 series)
- TORX® screwdriver, T5x40 / T6x40 (278 series)

**Application:** The most important tools for hand assembly of electronic components and re-work activities.

Order-No.	Series	
33505 2	9300-016	1



**NEW**
  
**9300-017**

**Wiha electronic service kit, 8 pcs.**

**Dissipative tools, electrostatically discharging.**

**Design:** ESD tools manufactured according to IEC 61340-5-1. Diagonal cutters with facet, suitable for cutting of thin and hard wires. Wide selection of current reversible blades for electronic applications. Light and compact design.

**Pouch:** Light and space-saving storage of tools.

**Content:** Diagonal cutter with facet, 115 mm (Z 44 1 04 series)

**Electric needle nose pliers**, 120 mm (Z 36 0 04 series)

**Professional ESD universal tweezers** (ZP 01 0 14 series)

**SYSTEM 4 SoftFinish® telescopic ESD handle**

**SYSTEM 4 reversible blades** (269 series):

- Slotted/ Phillips: 2.0 – PH00 / 2.5 – PH0
- TORX®: T5 – T6
- Hexagon/ hexagon ball end: SW 1.5 - SW 1.5

**Application:** Set combination ideally suited to maintenance work with electronic components.

Order-No.	Series	
33506 9	9300-017	1

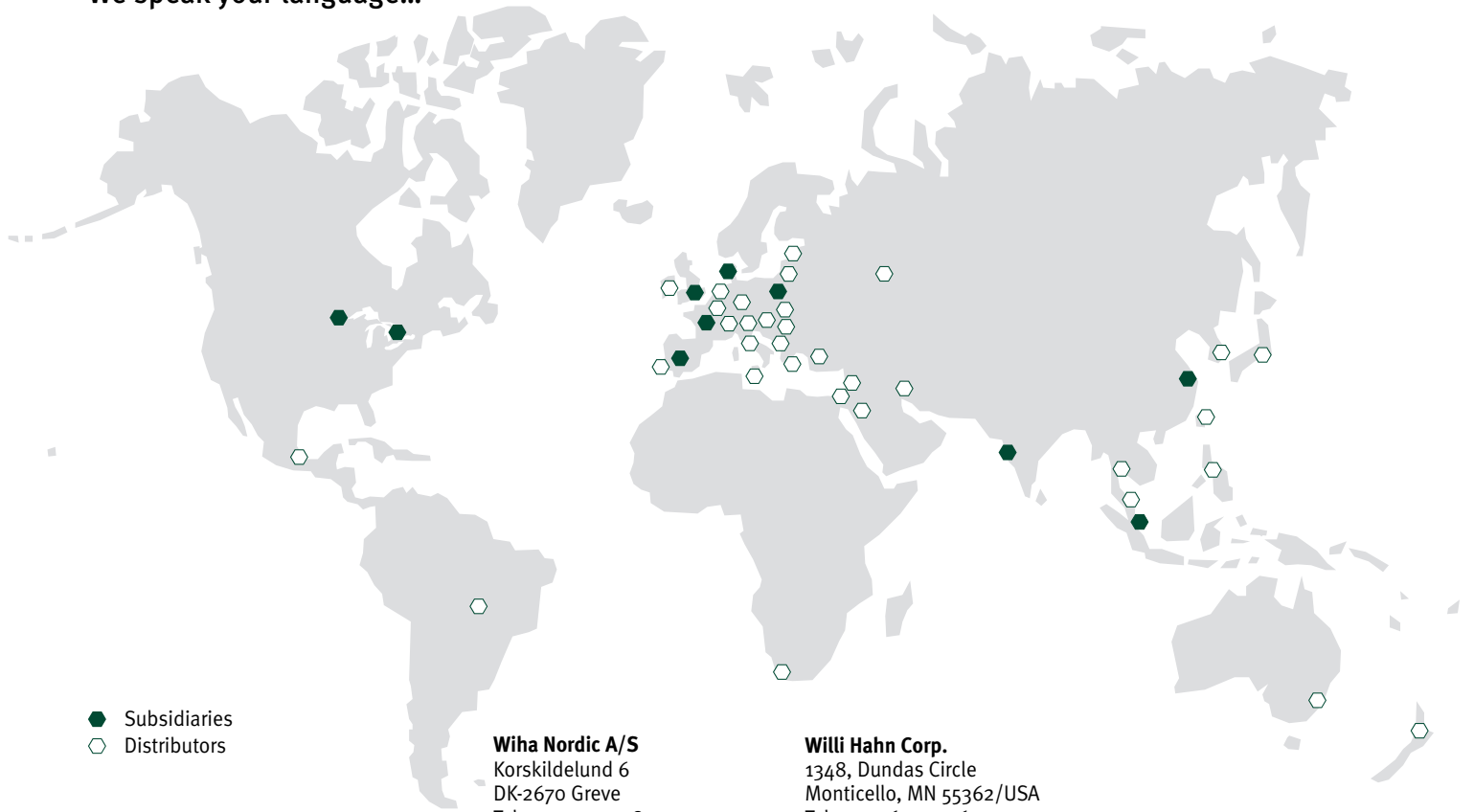
## Wiha Info

### Wiha application sets:

- Tool sets especially matched to your application
- Orderly, clearly laid out arrangement of the most common tools
- No additional ballast due to unnecessary tools
- Direct input of the experience of final users already integrated in product development

# Wiha world-wide

We speak your language...



- Subsidiaries
- Distributors

## Wiha Tools Ltd.

39, Sugarbrook Road,  
Aston Fields Ind. Estate,  
Bromsgrove, Worcs. B60 3DN  
Tel. +44 1527 57 57 58  
Fax +44 1527 57 55 44  
info.uk@wiha.com  
www.wiha.com

## Wiha France

Z. A. de Terrefort  
F-33520 Bruges / France  
Tel. +33 5 56 16 79 35  
Fax +33 5 56 16 79 36  
servicecommercial.wiha@wanadoo.fr  
www.wiha.com

## Wiha Nordic A/S

Korskildelund 6  
DK-2670 Greve  
Tel. +45 70 23 80 45  
Fax +45 70 23 80 46  
info.nordic@wiha.com  
www.wiha.com

## Willi Hahn S.A.

Avda. del Cobre, 15  
E-28914 Leganés/Madrid  
Tel. +34 91 693 85 11  
Fax +34 91 693 63 83  
info.es@wiha.com  
www.wiha.com

## Wiha Polska Sp. z o.o.

ul. Budowlanych 10 b  
PL-80-298 Gdańsk  
Tel. +48 58 762 38 30  
Fax +48 58 762 39 00  
info.pl@wiha.com  
www.wiha.com

## Willi Hahn Corp.

1348, Dundas Circle  
Monticello, MN 55362/USA  
Tel. +1 763 2 95 65 91  
Fax +1 763 2 95 65 98  
cservice@wihatools.com  
www.wihatools.com

## Wiha Tools Canada Ltd.

249 Summerlea Road  
L6T 4X4 Brampton, ON  
Tel. +1 763-295-6591  
Fax +1 763-295-6591  
mihran@wihatools.com  
www.wihatools.com

## Wiha Asia Pacific Pte. Ltd.

25 International Business Park  
#02 - 102 German Centre  
Singapore 609916  
Singapore  
Tel. +65 6563 1277  
Fax +65 6563 7168  
info.sg@wiha.com  
www.wiha.com

## Wiha Tools (India) Pvt. Ltd.

Jivan Vihar, 2nd Floor, 18,  
Modi Street, Fort,  
Mumbai - 400001,  
Maharashtra, India  
Tel. +91 22 226 944 14  
Fax +91 22 226 989 36  
info.in@wiha.com  
www.wiha.com

## Wiha Werkzeuge GmbH

Shanghai Rep. Office  
SHA Zhaofong Universe Building  
at 24th floor  
No. 1800 Zhongshangxie Road  
Shanghai / China  
Tel. +86 21 6440 1119  
Fax +86 21 6440 1112  
www.wihachina.com



**Wiha. Premium Tools  
for Professionals.**



## Wiha Werkzeuge GmbH

Obertalstraße 3-7  
D-78136 Schonach/Germany  
Tel. +49 7722 959-0  
Fax +49 7722 959-159 Inland  
Fax +49 7722 959-155 Export  
info@wiha.com  
www.wiha.com

Your dealer: