

# LABELMANAGER PC™ COMPUTER CONNECTED LABELMAKER



Easy-peel split back tape



Special backing is split down the middle to make separation of tape backing a snap.



## High-Quality, Colorful Labels Direct From Your PC

By harnessing the power and convenience of your PC, DYMO's new LabelMANAGER PC makes labeling easier and more effective than ever before. Now you can design and edit labels using your PC keyboard and monitor. You can print labels using all of your favorite fonts, symbols and graphics. Even print labels direct from software programs such as Microsoft Word and Excel.

The LabelMANAGER PC takes very little desk space and prints quietly. It comes with easy to use label design software. And it works with the full range of colorful, long lasting, self-adhesive DYMO "D1" tapes.

### PERFECT FOR LABELING:

File Folders	SALES REPORT	INVOICES
Floppies, Zip Disks, CD Cases	TH ROBB APT.#3	
Presentations	INSURANCE FORMS	
Telephone and Fax	Sales Presentation	
Equipment	PERSONNEL	
Binders, Name Badges	(%*9i2&@5\$20EA)	
In/Out Trays and Bins	SEMI POST	
Cabinets and Shelves		
and much more...		

(See reverse side for features & specifications.)



The world's leading brand of labelmakers for over 40 years

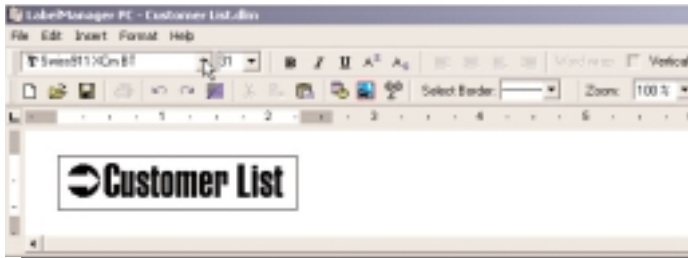
ORGANIZE YOUR WORLD

**DYMO**®

# LABELMANAGER PC™

## SOFTWARE FEATURES

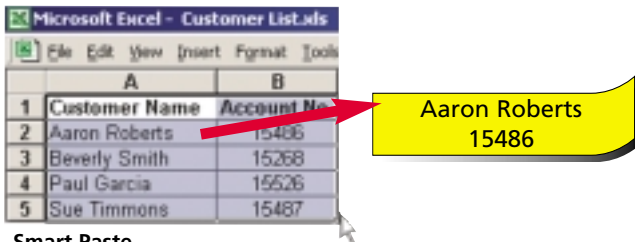
- 1 The LabelManager PC software has a simple interface, similar to a word processor. A full set of on-screen editing options make it easy to produce eye catching, effective labels.



### Fonts and Graphics

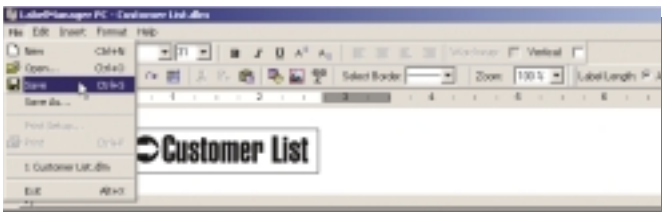
- Use all your favorite fonts, symbols and graphics.
- Print multiple lines of text.
- Add borders for impact.
- Format labels using bold, italics, outline, shadow and more.
- Print vertically, horizontally or mirrored.
- The length of your labels can be fixed or variable. Text can be automatically resized on the label for the best fit.
- Add the date and time.

- 2 The **Smart Paste** feature makes it simple to print a range of labels direct from your favorite programs. Select a range of cells from Microsoft Excel, text from Microsoft Word or data from a comma separated file. Your LabelManager PC will print labels for each of the entries, with space in between so they are easy to separate.



### Smart Paste

- 3 After you create a label that you're likely to use again, it's simple to save it for quick reprinting.



### Save Your Label

## HARDWARE FEATURES

- Connects to USB port.
- Prints on DYMO D1 tapes. 1/4" (6 mm), 3/8" (9 mm), 1/2" (12 mm), 3/4" (19 mm) and 1" (24 mm) widths.
- Comes complete with printer, 110 volt power adapter, USB cable, 3/4" D1 tape cartridge, software and manual.
- Dimensions (WHD): 3" (76 mm) x 5.4" (137 mm) x 5" (102 mm).
- Weight: 1 lb.

## SYSTEM REQUIREMENTS

- PC running Windows 98, 2000, Me or XP.
- USB port.

## RESELLER INFORMATION

Item No. 18949

UPC No. 071701 18949 3

Units Per MasterCarton 6

Master Carton Dimensions 10.51" x 18.58" x 9.93

## DYMO

*For over four decades, setting the pace in labeling innovation.*

The DYMO brand has always been synonymous with category leadership. Our ideas helped create the labeling category when we introduced our very first embossing labelers more than 40 years ago.

Today, DYMO innovation continues...with a new generation of labeling products that exceed consumer expectations.

## Look for each of these quality DYMO labeling products:

LabelMANAGER 100+  
LabelMANAGER 110+ Kit  
LabelMANAGER 200  
LabelMANAGER 300  
LabelMANAGER 9000

LabelPOINT 200  
LabelPOINT 300  
LabelWriter® 310, 320 & 330 Turbo  
Date/Time Stamper

# DYMO®

44 Commerce Road Stamford, CT 06902-4561

For more information or the name of a DYMO dealer, please visit  
[www.dymo.com](http://www.dymo.com) or call us at **1-800-426-7827**