

Subminiature Pushbutton Switches



Specifications:

Contact rating:	max. 48 V AC/DC, 0,4 VA / max. 50 mA min. 20 mV AC/DC, 1 μ A
Contact resistance:	< 50 m Ω
Insulation resistance:	> 500 M Ω at 250 V DC
Dielectric strength:	500 V, 50 Hz for the duration of 1 minute
Operating temperature:	- 20° to + 80° C
Mechanical life:	minimum 60 000 operations
Contacts:	phosphor bronze, gold-plated over nickel barrier
Terminals:	APE – PC terminals, crimped, phosphor bronze, gold-plated over nickel barrier
Material:	case: PBT, meets UL 94 V-0, washable metal parts: brass, nickel-plated
Mounting:	on pc-board
Soldering conditions:	auto-soldering – max.: 5 sec, 260° C \pm 5° C

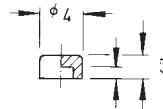
3

The stability can be improved by using a supporting bracket.

Accessories:

Plastic caps

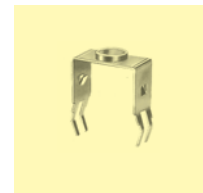
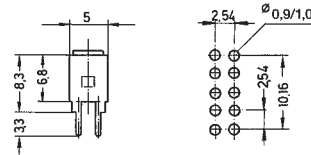
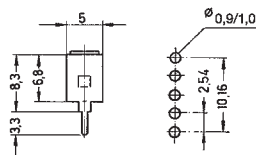
black	KA 3105
green	KA 3106
grey	KA 3107
yellow	KA 3108
red	KA 3109
white	KA 3110



Supporting bracket for
Order number

APE 1 F
AZ 0001

APE 2 F
AZ 0005





Subminiature Pushbutton Switches

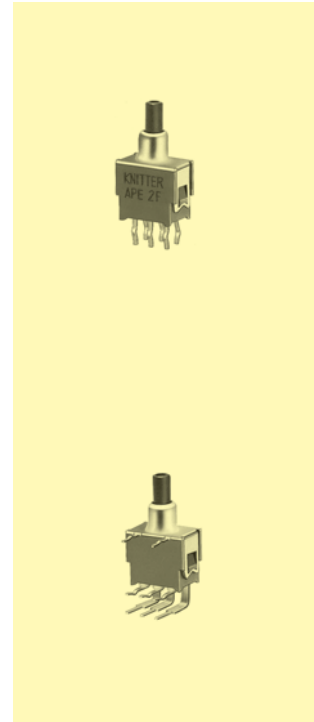
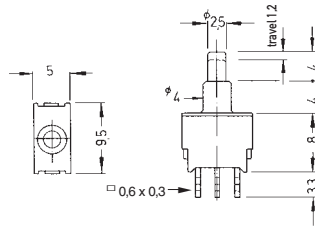
Models: Switching functions: when looking at the brand name,
the normally closed contact is on the right-hand side

washable

SPDT

APE 1 F

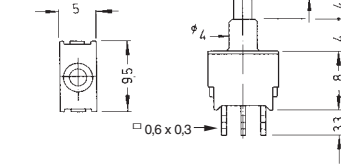
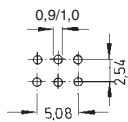
on - mom



DPDT

APE 2 F

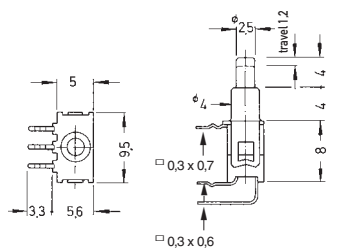
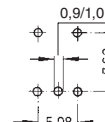
on - mom



SPDT

APE 1 F - RA

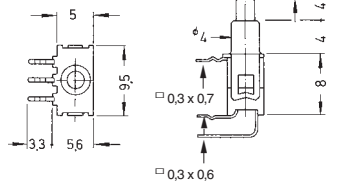
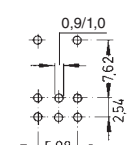
on - mom



DPDT

APE 2 F - RA

on - mom



Special pin configuration:

Subminiature pushbutton switch
with 5,08 mm spacing

Additional to type number: - 1

Example of order: APE 2 F - RA - 1

