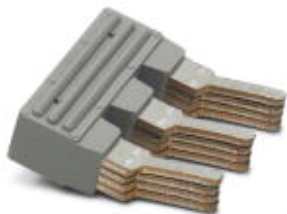


# Insertion bridge - EB 3-15 4-FACH - 0205148

Please be informed that the data shown in this PDF Document is generated from our Online Catalog. Please find the complete data in the user's documentation. Our General Terms of Use for Downloads are valid (<http://phoenixcontact.com/download>)

Insertion bridge, Number of positions: 3, Color: gray



## Key commercial data

Packing unit	10 pc
GTIN	 4 017918 244293
Weight per Piece (excluding packing)	42.11 g
Custom tariff number	85389099
Country of origin	Poland
Note	Made to Order (non-returnable)

## Technical data

### Technical data

Color	gray
Number of positions	3

## Classifications

### eCl@ss

eCl@ss 4.0	27141199
eCl@ss 4.1	27141199
eCl@ss 5.0	27141140
eCl@ss 5.1	27141140
eCl@ss 6.0	27141140
eCl@ss 7.0	27141140
eCl@ss 8.0	27141140

### ETIM

ETIM 2.0	EC000489
----------	----------

## Insertion bridge - EB 3-15 4-FACH - 0205148

### Classifications

#### ETIM

ETIM 3.0	EC000489
ETIM 4.0	EC000489
ETIM 5.0	EC000489

#### UNSPSC

UNSPSC 6.01	30211829
UNSPSC 7.0901	39121426
UNSPSC 11	39121426
UNSPSC 12.01	39121426
UNSPSC 13.2	39121426