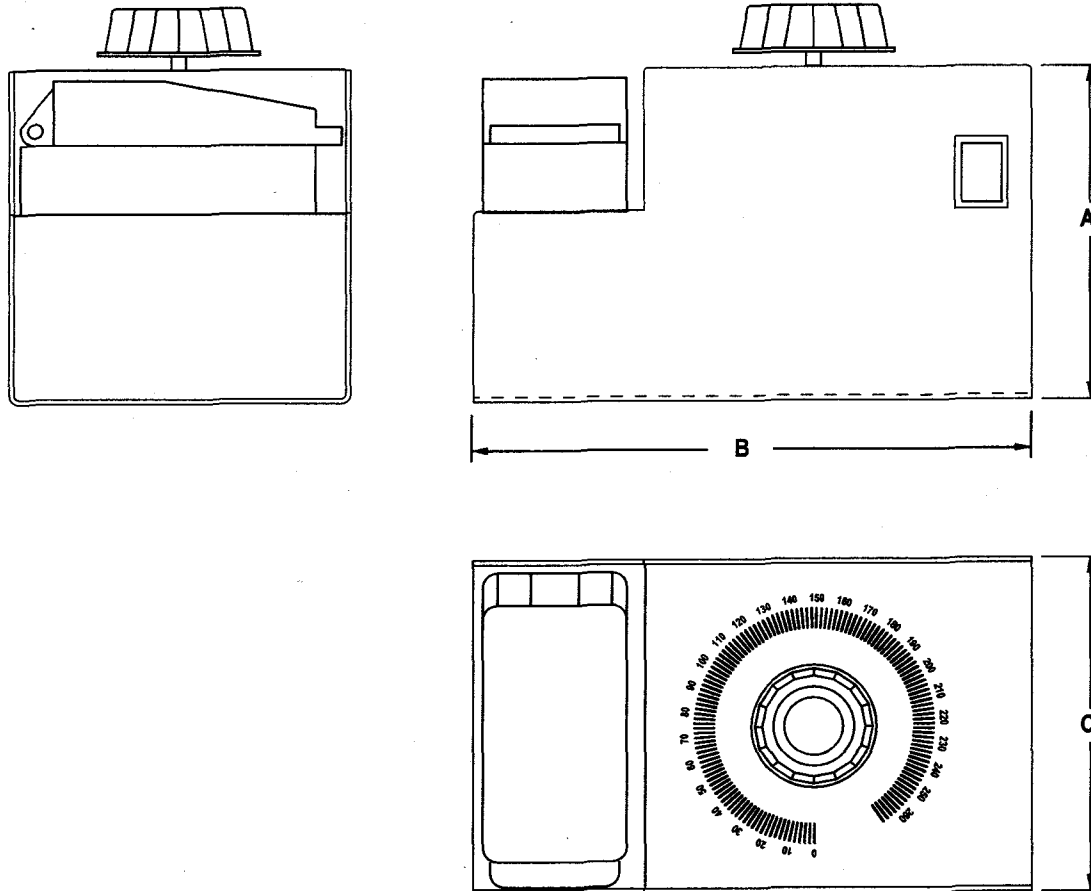


## LAB / BENCH TOP VARIABLE TRANSFORMERS INSTALLATION AND SAFETY INSTRUCTIONS



Type	Output Amps	A	B	C
CMSE 3	3	140	230	140
CMSE 5	5	200	280	200
CMSE 10	10	200	280	200

1. Read all of these instructions before you use the transformer.
2. This transformer is not designed to provide mains isolation.
3. Variable transformers operate at mains voltage.  
**DO NOT EXCEED THE MAXIMUM VOLTAGE AND CURRENT RATING.**
4. Installation connection and maintenance should only be carried out by suitably qualified personnel.
5. When connected to the electrical supply the terminals, brushes and track face are at mains potential with a potentially lethal voltage.
6. The output must always be applied across the load.  
Never connect the transformer in series with the load.
7. The carbon brush should be inspected for damage or wear, faulty or worn brushes will result in damage to the windings.
8. The output connector is intended for making connection for test purposes only. It is not to be used for permanent connections. All connections must be insulated to remove the possibility of personal contact with live parts.