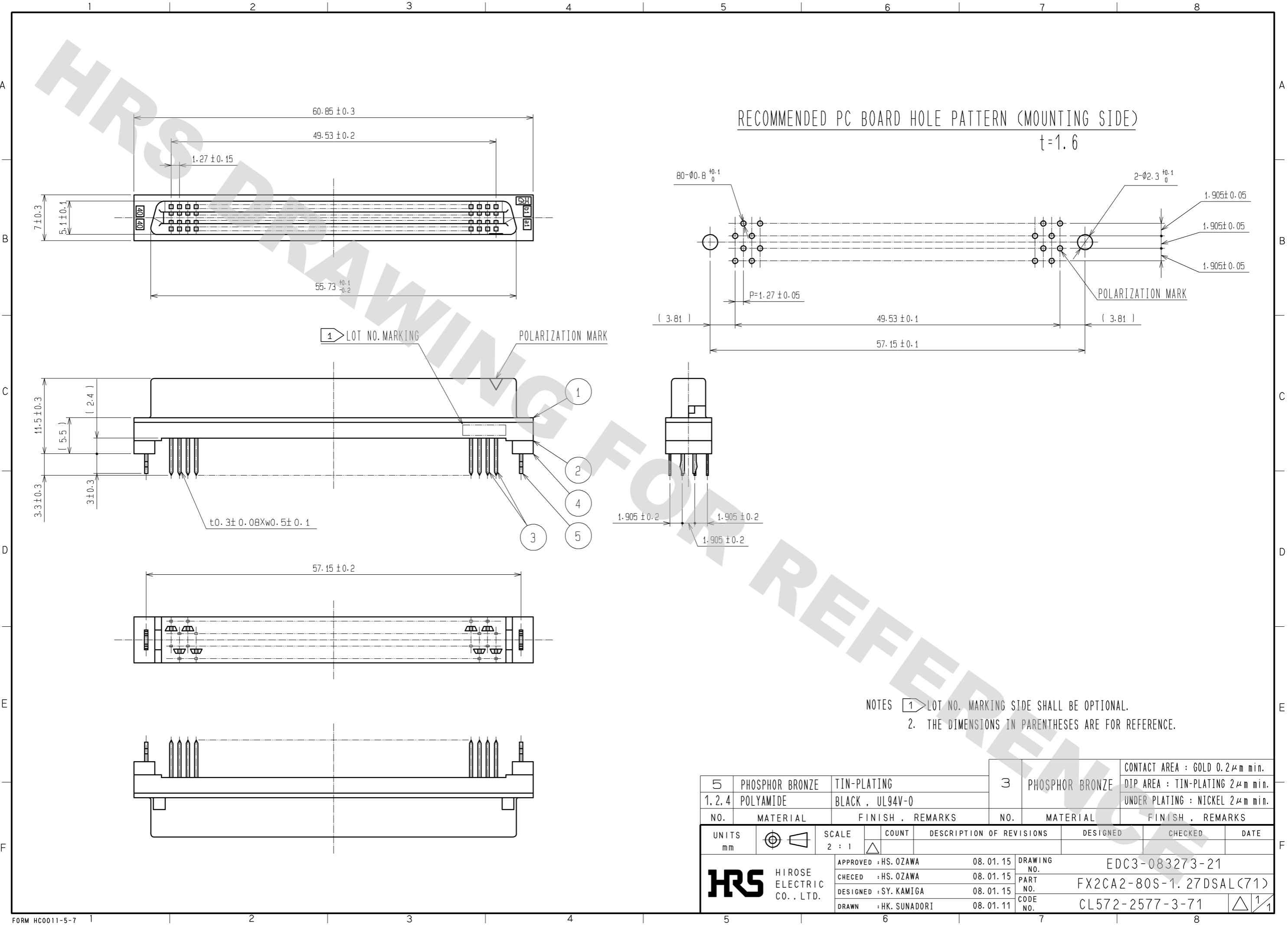


DRAWING FOR REFERENCE: This is subject to change without notice
08/11/2012



NOTES
 1. LOT NO. MARKING SIDE SHALL BE OPTIONAL.
 2. THE DIMENSIONS IN PARENTHESES ARE FOR REFERENCE.

5	PHOSPHOR BRONZE	TIN-PLATING	3	PHOSPHOR BRONZE	CONTACT AREA : GOLD 0.2 μ m min. DIP AREA : TIN-PLATING 2 μ m min. UNDER PLATING : NICKEL 2 μ m min.
1, 2, 4	POLYAMIDE	BLACK , UL94V-0			
NO.	MATERIAL	FINISH , REMARKS	NO.	MATERIAL	FINISH , REMARKS
UNITS	\odot \triangleleft	SCALE	COUNT	DESCRIPTION OF REVISIONS	
mm		2 : 1	\triangle	DESIGNED	CHECKED
HRS HIROSE ELECTRIC CO., LTD.		APPROVED : HS. OZAWA	08.01.15	DRAWING NO. EDC3-083273-21	
		CHECED : HS. OZAWA	08.01.15	PART NO. FX2CA2-80S-1.27DSAL(71)	
		DESIGNED : SY. KAMIGA	08.01.15	CODE NO. CL572-2577-3-71	
		DRAWN : HK. SUNADORI	08.01.11		