

drylin® W Modular Guide Systems



Easy to install

Lubricant-free

Different carriage lengths available

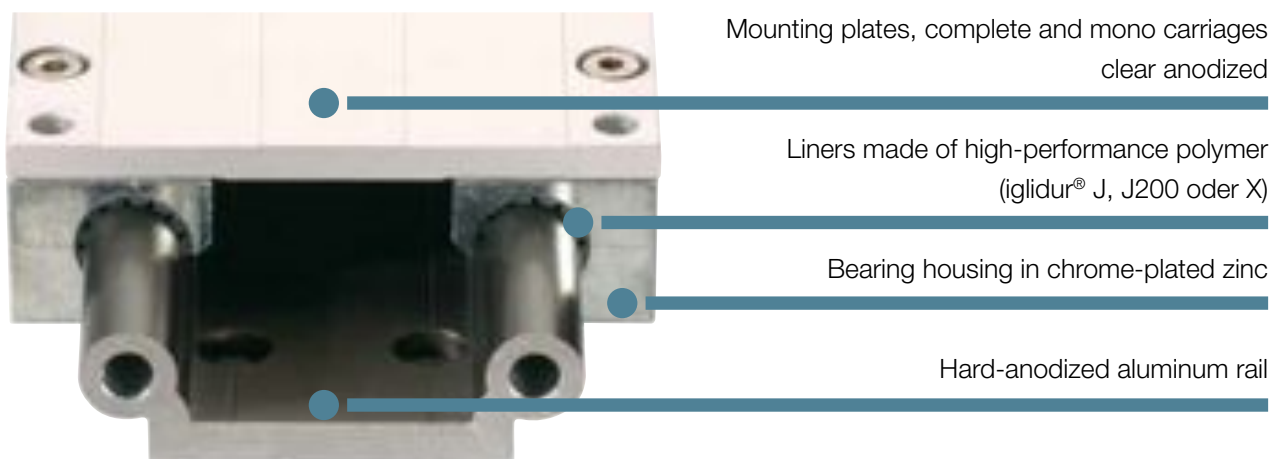
Different rail widths available

Low installation height

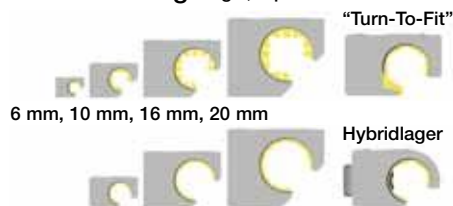
Corrosion-resistant

drylin® W | Modular Guide Systems

drylin® W is offered as a cost-effective, fully assembled system. The design of drylin® W promotes design flexibility and ease of assembly, with both single and double rail configurations. Hard anodized aluminum is used as the rail material, and drylin® W also offers low wear, low friction without lubrication, resistance to dirt and dust, low weight and quiet operation.



House bearing single, square or round



Single rail square or round



Double rail square or round



Double carriage square or round



Advantages:

- Easy installation, maintenance-free
- lightweight, low noise and dry-running
- Angular rail with floating bearing function for diagonal assembly
- VA stainless steel version (optional)
- Available from stock with manually adjustable clearance, with manual clamping and as hybrid linear bearing with integrated roll

Lubricant-free operation

- Liners made of high-performance polymer iglidur® J200/J guarantee optimum running properties and long service life
- Liners in iglidur® X for extreme environmental conditions (chemicals/temperature)

Customized clearance adjustment

- Alternatively, continuously adjustable bearing clearance



When not to use it?

- When I require the same dimension as in roller bearing solutions
▶ drylin® T, page 799, ▶ drylin® R, page 869
- When I require an integrated drive
▶ drylin® SHT/SLW, page 1007



Lubricant-free



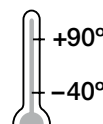
Cleanroom certified
IPA Fraunhofer
▶ page 798



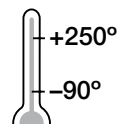
Free of toxins
ROHS 2002/95/EC



ESD compatible
(electrostatic
discharge)



Temperature
Standard



Temperature
Stainless steel

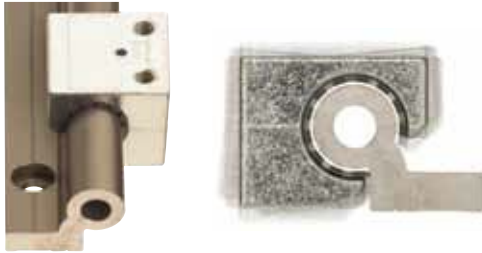


drylin® W | Product Overview

**Single rail – square geometry**

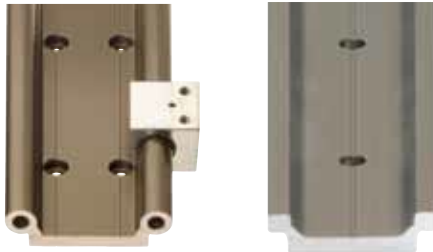
- Flexible to use, reduce installation costs
- Compensation of rotation angle errors
- Individual rail and bearing housings are available in sizes 06, 10, 16 and 20

► page 848

**Single rail – round geometry**

- Flexible utilization of installation space
- Offers good torque support in parallel operation
- Resistant to dirt and dust
- Individual rail and bearing housings are available in sizes 10, 16 and 20

► page 850

**Double rail**

- High torque support and extreme torsional rigidity
- Simple and fast installation
- Individual rail and bearing housings are available in sizes 06, 10, 16 and 20

► page 854 and 856

**Complete Carriage**

- For all double rails in various lengths
- Assembled system ready for installation
- Optionally with adjustable bearing housings and manual clamp

► page 855 and 857

**Stainless Steel**

- combine guide shafts made of material 1.4571 (V4A) with milling parts made of V4A and/or stainless steel
- precision casting parts made of material 1.4408
- chemical- and corrosion-resistant

► page 864

**Specialists**

- for all round rail shapes
- clearance-adjustable bearings
- bearings with support rollers (for smooth running in manual mode)

► from page 851

drylin® W | Application Examples



Typical sectors of industry and application areas

- Agricultural
- Vehicle manufacturing
- Medical
- Structural-facings sector
- Packaging
- Furniture
- Robotics
- Sheet metal industry etc.

Improve technology and reduce costs – 170
exciting examples online

► www.igus.eu/drylin-applications



Flatbed ink-jet printer



Mobile saw mill



► www.igus.eu/safety-door



► www.igus-packaging.eu

drylin® W | Configure Online



Various free online configurators are also available for drylin® W linear guides. These provide support for calculating the function and service life, and when integrating the selected linear guide into your 3D model. With only a few clicks, the drylin® W linear guide can be ordered in the desired configuration through the online shop. Shipment is made within 24-48 hours!

► www.igus.eu/drylinW-configurator



To verify the function of your application and to determine the expected service life: these are the tasks performed by the drylin® expert 2.0 calculation program. Only 4 steps are required to obtain a definitive statement about the operating behaviour of the application, as well as a host of important technical parameters, such as the expected wear and the required driving forces.

► www.igus.eu/drylin-expert




The igus® CAD online configurator gives you the ability to design and save your linear guide as a system, or the respectively individual components directly as a 3D model in all commonly used formats, or to have these sent by e-mail – free of charge and without registration.

► www.igus.eu/drylin-CAD


drylin® W | Selection | Single Bearing

Housing bearings and Rails single, round or square ● available from stock




	Size	Housing	Bearing	Properties	Aluminum (Standard) Single rail		
					WS-10	WS-16	WS-20
Max. length [mm]					4,000	4,000	4,000
WJ200UM-01-10	10	Zinc diecasting	iglidur® J200	Standard	●		
WJ200UM-01-10-LL	10	Zinc diecasting	iglidur® J200	Floating bearing	●		
WJ200UM-11-10	10	Zinc diecasting	iglidur® J200	Reduced clearance	●		
WJUME-01-10	10	Zinc diecasting	iglidur® J	adjustable clearance	●		
WJRM-01-10	10	Zinc diecasting	Rolle/ iglidur® J	Hybrid, slide/roll	●		
WJUM-01-10-ES-FG	10	Stainless steel	iglidur® J	Standard	●		
WJUM-01-10-ES-FG-LL	10	Stainless steel	iglidur® J	Floating bearing	●		
WXUM-01-10-ES-FG	10	Stainless steel	iglidur® X	Hight temperature			
WA180UM-01-10-ES-FG	10	Stainless steel	iglidur® A180	FDA			
WHKA-10	10	Zinc diecasting	iglidur® J200	Manual clamp	●		
WJ200UM-01-16	16	Zinc diecasting	iglidur® J200	Standard		●	
WJ200UM-01-16-LL	16	Zinc diecasting	iglidur® J200	Floating bearing		●	
WJ200UM-11-16	16	Zinc diecasting	iglidur® J200	Reduced clearance		●	
WJ200UME-01-16	16	Zinc diecasting	iglidur® J200	adjustable clearance		●	
WJRM-01-16	16	Zinc diecasting	iglidur® J200	Hybrid, slide/roll		●	
WHKA-16	16	Zinc diecasting	iglidur® J200	Manual clamp		●	
WJ200UM-01-20	20	Zinc diecasting	iglidur® J200	Standard			●
WJ200UM-01-20-LL	20	Zinc diecasting	iglidur® J200	Floating bearing			●
WJ200UM-11-20	20	Zinc diecasting	iglidur® J200	Reduced clearance			●
WJ200UME-01-20	20	Zinc diecasting	iglidur® J200	adjustable clearance			●
WJRM-01-20	20	Zinc diecasting	iglidur® J200	Hybrid, slide/roll			●
WJUM-01-20-ES-FG	20	Stainless steel	iglidur® J	Standard			●
WXUM-01-20-ES-FG	20	Stainless steel	iglidur® X	Hight temperature			
WHKA-20	20	Zinc diecasting	iglidur® J200	Manual clamp			●

Housing bearings and Rails single, square ● available from stock




	Size	Housing	Bearing	Properties	Aluminum (Standard) Single rail			
					WSQ-06	WSQ-10	WSQ-16	WSQ-20
Max. Length [mm]					3,000	4,000	4,000	4,000
WJ200QM-01-06	06	Zinc diecasting	iglidur® J200	Standard	●			
WJ200QM-01-06-LLZ	06	Zinc diecasting	iglidur® J200	Floating bearing z-direction	●			
WJ200QM-01-06-LLY	06	Zinc diecasting	iglidur® J200	Floating bearing y-direction	●			
WJ200QM-01-10	10	Zinc diecasting	iglidur® J200	Standard		●		
WJ200QM-01-10-LLZ	10	Zinc diecasting	iglidur® J200	Floating bearing z-direction		●		
WJ200QM-01-10-LLY	10	Zinc diecasting	iglidur® J200	Floating bearing y-direction		●		
WJ200QM-01-16	16	Zinc diecasting	iglidur® J200	Standard			●	
WJ200QM-01-16-LLZ	16	Zinc diecasting	iglidur® J200	Floating bearing z-direction			●	
WJ200QM-01-16-LLY	16	Zinc diecasting	iglidur® J200	Floating bearing y-direction			●	
WJ200QM-01-20	20	Zinc diecasting	iglidur® J200	Standard				●
WJ200QM-01-20-LLZ	20	Zinc diecasting	iglidur® J200	Floating bearing z-direction				●
WJ200QM-01-20-LLY	20	Zinc diecasting	iglidur® J200	Floating bearing y-direction				●

drylin® W | Selection | Single Bearing



	Aluminum (Standard) double rails				Stainless steel rail V4A		Aluminum-Special-double-rail						page
	WS-10-40	WS-10-80	WS-16-60	WS-20-80	single	double	Inch connections				reduced weight		
					WS-20-ES-FG	WS-10-40-ES-FG	WS-10-40-SL	WS-10-80-SL	WS-16-60-SL	WS-20-80-SL	WS-10-40-CAM	WS-10-80-CAM	
Max. Length [mm]	4,000	4,000	4,000	4,000	3,000	3,000	1,000/1,500	1,000/1,500	1,000/1,500	1,000/1,500	500/1,000	500	
WJ200UM-01-10	●	●					●	●			●	●	851
WJ200UM-01-10-LL	●	●					●	●			●	●	851
WJ200UM-11-10	●	●					●	●			●	●	851
WJUME-01-10	●	●					●	●			●	●	851
WJRM-01-10	●	●					●	●			●	●	853
WJUM-01-10-ES-FG	●	●				●	●	●			●	●	865
WJUM-01-10-ES-FG-LL	●	●				●	●	●			●	●	865
WXUM-01-10-ES-FG						●							865
WA180UM-01-10-ES-FG						●							865
WHKA-10	●	●					●	●			●	●	862
WJ200UM-01-16			●							●			851
WJ200UM-01-16-LL			●							●			851
WJ200UM-11-16			●							●			851
WJ200UME-01-16			●							●			851
WJRM-01-16			●							●			853
WHKA-16			●							●			862
WJ200UM-01-20				●							●		851
WJ200UM-01-20-LL				●							●		851
WJ200UM-11-20				●							●		851
WJ200UME-01-20				●							●		851
WJRM-01-20				●							●		853
WJUM-01-20-ES-FG				●	●								865
WXUM-01-20-ES-FG					●								865
WHKA-20				●							●		862



	Aluminum (Standard) double rails				Aluminum-Special-double-rail		page
	WSQ-06-30	WSQ-10-40	WSQ-10-80	WSQ-16-60	Inch connections	reduced weight	
					WS-06-30-SL	WSQ-06-30-CAM	
Max. Length [mm]	3,000	4,000	4,000	4,000	1,000/1,500	500	
WJ200QM-01-06	●				●	●	849
WJ200QM-01-06-LLZ	●				●	●	849
WJ200QM-01-06-LLY	●				●	●	849
WJ200QM-01-10		●	●				849
WJ200QM-01-10-LLZ		●	●				849
WJ200QM-01-10-LLY		●	●				849
WJ200QM-01-16				●			849
WJ200QM-01-16-LLZ				●			849
WJ200QM-01-16-LLY				●			849
WJ200QM-01-20							849
WJ200QM-01-20-LLZ							849
WJ200QM-01-20-LLY							849

Complete Carriage for double rails, round ● available from stock



	Size	Housing	Mounting plate	Bearing	Length	Width	Properties
WW-10-40-10	10-40	Zinc diecasting	Aluminum	iglidur® J200	100	73	Standard
WW-10-40-10-HKA	10-40	Zinc diecasting	Aluminum	iglidur® J200	100	73	manual clamp
WW-10-40-10-SL	10-40	Zinc diecasting	Aluminum	iglidur® J200	100	73	ø 10 mm bore for 3/8"
WW-10-40-10-SL-HKA	10-40	Zinc diecasting	Aluminum	iglidur® J200	100	73	Manual clamp, ø 10mm for 3/8"
WW-10-40-15	10-40	Zinc diecasting	Aluminum	iglidur® J200	150	73	Standard
WW-10-40-15-HKA	10-40	Zinc diecasting	Aluminum	iglidur® J200	150	73	manual clamp
WW-10-40-15-SL	10-40	Zinc diecasting	Aluminum	iglidur® J200	150	73	ø 10 mm bore for 3/8"
WW-10-40-15-SL-HKA	10-40	Zinc diecasting	Aluminum	iglidur® J200	150	73	Manual clamp, ø 10mm for 3/8"
WW-10-40-20	10-40	Zinc diecasting	Aluminum	iglidur® J200	200	73	Standard
WW-10-40-20-HKA	10-40	Zinc diecasting	Aluminum	iglidur® J200	200	73	manual clamp
WW-10-40-20-SL	10-40	Zinc diecasting	Aluminum	iglidur® J200	200	73	ø 10 mm bore for 3/8"
WW-10-40-20-SL-HKA	10-40	Zinc diecasting	Aluminum	iglidur® J200	200	73	Manual clamp, ø 10mm for 3/8"
WW-10-80-10	10-80	Zinc diecasting	Aluminum	iglidur® J200	100	107	Standard
WW-10-80-10-HKA	10-80	Zinc diecasting	Aluminum	iglidur® J200	100	107	manual clamp
WW-10-80-10-SL	10-80	Zinc diecasting	Aluminum	iglidur® J200	100	107	ø 10 mm bore for 3/8"
WW-10-80-10-SL-HKA	10-80	Zinc diecasting	Aluminum	iglidur® J200	100	107	Manual clamp, ø 10mm for 3/8"
WW-10-80-15	10-80	Zinc diecasting	Aluminum	iglidur® J200	150	107	Standard
WW-10-80-15-HKA	10-80	Zinc diecasting	Aluminum	iglidur® J200	150	107	manual clamp
WW-10-80-15-SL	10-80	Zinc diecasting	Aluminum	iglidur® J200	150	107	ø 10 mm bore for 3/8"
WW-10-80-15-SL-HKA	10-80	Zinc diecasting	Aluminum	iglidur® J200	150	107	Manual clamp, ø 10mm for 3/8"
WW-10-80-20	10-80	Zinc diecasting	Aluminum	iglidur® J200	200	107	Standard
WW-10-80-20-HKA	10-80	Zinc diecasting	Aluminum	iglidur® J200	200	107	manual clamp
WW-10-80-20-SL	10-80	Zinc diecasting	Aluminum	iglidur® J200	200	107	ø 10 mm bore for 3/8"
WW-10-80-20-SL-HKA	10-80	Zinc diecasting	Aluminum	iglidur® J200	200	107	Manual clamp, ø 10mm for 3/8"
WW-16-60-10	16-60	Zinc diecasting	Aluminum	iglidur® J200	100	104	Standard
WW-16-60-SL	16-60	Zinc diecasting	Aluminum	iglidur® J200	100	104	ø 10 mm bore for 3/8"
WWH-16-60-15	16-60	Zinc diecasting	Aluminum	iglidur® J	150	84	Slide and roll
WW-16-60-15	16-60	Zinc diecasting	Aluminum	iglidur® J200	150	104	Standard
WW-16-60-15-HKA	16-60	Zinc diecasting	Aluminum	iglidur® J200	150	104	manual clamp
WW-16-60-15-SL	16-60	Zinc diecasting	Aluminum	iglidur® J200	150	104	ø 10 mm bore for 3/8"
WW-16-60-15-SL-HKA	16-60	Zinc diecasting	Aluminum	iglidur® J200	150	104	Manual clamp, ø 10mm for 3/8"
WW-16-60-20	16-60	Zinc diecasting	Aluminum	iglidur® J200	200	104	Standard
WW-16-60-20-HKA	16-60	Zinc diecasting	Aluminum	iglidur® J200	200	104	manual clamp
WW-16-60-20-SL	16-60	Zinc diecasting	Aluminum	iglidur® J200	200	104	ø 10 mm bore for 3/8"
WW-16-60-20-SL-HKA	16-60	Zinc diecasting	Aluminum	iglidur® J200	200	104	Manual clamp, ø 10mm for 3/8"
WW-20-80-15	20-80	Zinc diecasting	Aluminum	iglidur® J200	150	134	Standard
WW-20-80-15-HKA	20-80	Zinc diecasting	Aluminum	iglidur® J200	150	134	manual clamp
WW-20-80-15-SL	20-80	Zinc diecasting	Aluminum	iglidur® J200	150	134	ø 10 mm bore for 3/8"
WW-20-80-15-SL-HKA	20-80	Zinc diecasting	Aluminum	iglidur® J200	150	134	Manual clamp, ø 10mm for 3/8"
WW-20-80-20	20-80	Zinc diecasting	Aluminum	iglidur® J200	200	134	Standard
WW-20-80-20-HKA	20-80	Zinc diecasting	Aluminum	iglidur® J200	200	134	manual clamp
WW-20-80-20-SL	20-80	Zinc diecasting	Aluminum	iglidur® J200	200	134	ø 10 mm bore for 3/8"
WW-20-80-20-SL-HKA	20-80	Zinc diecasting	Aluminum	iglidur® J200	200	134	Manual clamp, ø 10mm for 3/8"
WW-20-80-25	20-80	Zinc diecasting	Aluminum	iglidur® J200	250	134	Standard
WW-20-80-25-HKA	20-80	Zinc diecasting	Aluminum	iglidur® J200	250	134	manual clamp
WW-20-80-25-SL	20-80	Zinc diecasting	Aluminum	iglidur® J200	250	134	ø 10 mm bore for 3/8"
WW-20-80-25-SL-HKA	20-80	Zinc diecasting	Aluminum	iglidur® J200	250	134	Manual clamp, ø 10mm for 3/8"

drylin® W | Selection | Complete Carriages, round



	Aluminum (Standard)				Aluminum-SpecialDouble-Rails						page
	Double Rails				Inch connections				reduced weight		
	WS-10-40	WS-10-80	WS-16-60	WS-20-80	WS-10-40-SL	WS-10-80-SL	WS-16-60-SL	WS-20-80-SL	WS-10-40-CAM	WS-10-80-CAM	
Max. Length [mm]	4,000	4,000	4,000	4,000	1,000/ 1,500	1,000/ 1,500	1,000/ 1,500	1,000/ 1,500	500/ 1,000	500/ 1,000	
WW-10-40-10	●				●				●		857
WW-10-40-10-HKA	●				●				●		857
WW-10-40-10-SL	●				●				●		861
WW-10-40-10-SL-HKA	●				●				●		861
WW-10-40-15	●				●				●		857
WW-10-40-15-HKA	●				●				●		857
WW-10-40-15-SL	●				●				●		861
WW-10-40-15-SL-HKA	●				●				●		861
WW-10-40-20	●				●				●		857
WW-10-40-20-HKA	●				●				●		857
WW-10-40-20-SL	●				●				●		861
WW-10-40-20-SL-HKA	●				●				●		861
WW-10-80-10		●				●				●	857
WW-10-80-10-HKA		●				●				●	857
WW-10-80-10-SL		●				●				●	861
WW-10-80-10-SL-HKA		●				●				●	861
WW-10-80-15		●				●				●	857
WW-10-80-15-HKA		●				●				●	857
WW-10-80-15-SL		●				●				●	861
WW-10-80-15-SL-HKA		●				●				●	861
WW-10-80-20		●				●				●	857
WW-10-80-20-HKA		●				●				●	857
WW-10-80-20-SL		●				●				●	861
WW-10-80-20-SL-HKA		●				●				●	861
WW-16-60-10			●				●				857
WW-16-60-SL			●				●				861
WWH-16-60-15			●				●				858
WW-16-60-15			●				●				857
WW-16-60-15-HKA			●				●				857
WW-16-60-15-SL			●				●				861
WW-16-60-15-SL-HKA			●				●				861
WW-16-60-20			●				●				857
WW-16-60-20-HKA			●				●				857
WW-16-60-20-SL			●				●				861
WW-16-60-20-SL-HKA			●				●				861
WW-20-80-15				●				●			857
WW-20-80-15-HKA				●				●			857
WW-20-80-15-SL				●				●			861
WW-20-80-15-SL-HKA				●				●			861
WW-20-80-20				●				●			857
WW-20-80-20-HKA				●				●			857
WW-20-80-20-SL				●				●			861
WW-20-80-20-SL-HKA				●				●			861
WW-20-80-25				●				●			857
WW-20-80-25-HKA				●				●			857
WW-20-80-25-SL				●				●			861
WW-20-80-25-SL-HKA				●				●			861

drylin® W | Selection | Complete Carriages, square

Complete Carriage for double rails, square ● available from stock

	Size	Housing	Mounting plate	Bearing	Length	Width	Properties	page
WW-06-30-06	06-30	Zinc diecasting	Aluminum	iglidur® J200	60	54	Standard	855
WW-06-30-06-SL	06-30	Zinc diecasting	Aluminum	iglidur® J200	60	54	ø10 mm bore for 3/8"	861
WW-06-30-08	06-30	Zinc diecasting	Aluminum	iglidur® J200	80	54	Standard	855
WW-06-30-08-SL	06-30	Zinc diecasting	Aluminum	iglidur® J200	80	54	ø10 mm bore for 3/8"	861
WW-06-30-10	06-30	Zinc diecasting	Aluminum	iglidur® J200	100	54	Standard	855
WW-06-30-10-SL	06-30	Zinc diecasting	Aluminum	iglidur® J200	100	54	ø10 mm bore for 3/8"	861
WWC-10-40-10	10-40	Aluminum	–	iglidur® J	100	73	Monoslide, one-piece	855
WWC-10-40-15	10-40	Aluminum	–	iglidur® J	150	73	Monoslide, one-piece	855
WWC-10-40-20	10-40	Aluminum	–	iglidur® J	200	73	Monoslide, one-piece	855
WWC-10-80-10	10-80	Aluminum	–	iglidur® J	100	107	Monoslide, one-piece	855
WWC-10-80-15	10-80	Aluminum	–	iglidur® J	150	107	Monoslide, one-piece	855
WWC-10-80-20	10-80	Aluminum	–	iglidur® J	200	107	Monoslide, one-piece	855
WWC-16-60-10	16-60	Aluminum	–	iglidur® J	100	104	Monoslide, one-piece	855
WWC-16-60-15	16-60	Aluminum	–	iglidur® J	150	104	Monoslide, one-piece	855
WWC-16-60-20	16-60	Aluminum	–	iglidur® J	200	104	Monoslide, one-piece	855



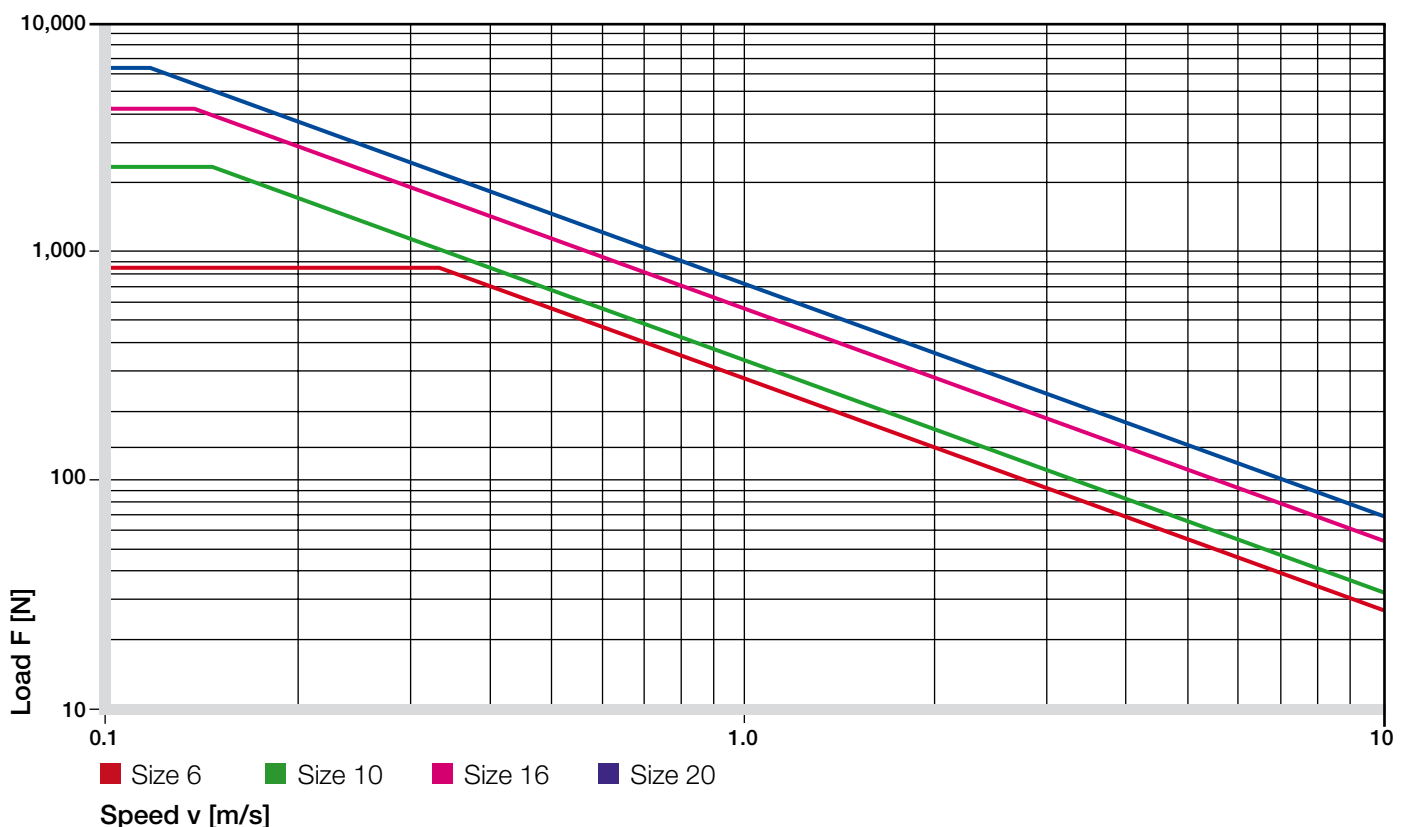
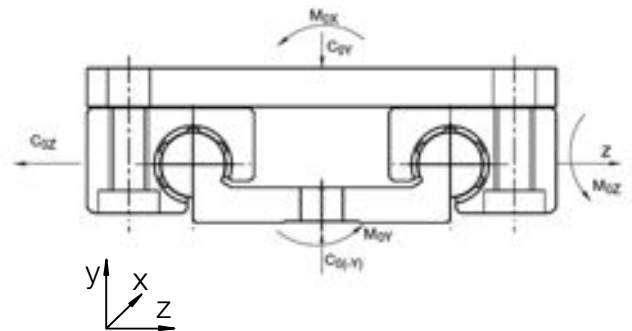
	Aluminum Double Rails (Standard)				Aluminum-Special-Double-Rails		page
	WSQ-06-30	WSQ-10-40	WSQ-10-80	WSQ-16-60	Inch connections WS-06-30-SL	reduced weight WSQ-06-30-CAM	
Max. Length [mm]	3,000	4,000	4,000	4,000	1,000 / 1,500	500	
WW-06-30-06	●				●	●	855
WW-06-30-06-SL	●				●	●	861
WW-06-30-08	●				●	●	855
WW-06-30-08-SL	●				●	●	861
WW-06-30-10	●				●	●	855
WW-06-30-10-SL	●				●	●	861
WWC-10-40-10		●					855
WWC-10-40-15		●					855
WWC-10-40-20		●					855
WWC-10-80-10			●				855
WWC-10-80-15			●				855
WWC-10-80-20			●				855
WWC-16-60-10				●			855
WWC-16-60-15				●			855
WWC-16-60-20				●			855

drylin® W | Technical Data

Type	Carriage length [mm]	Carriage width [mm]	Coy [N]	Coz [N]	Mox [Nm]	Moy [Nm]	Mozy [Nm]
WW-06-30-06	60	54	1,680	840	25	34	34
WW-06-30-08	80	54	1,680	840	25	51	51
WW-06-30-10	100	54	1,680	840	25	68	68
WW-10-40-10	100	73	4,800	2,400	96	170	170
WW-10-40-15	150	73	4,800	2,400	96	290	290
WW-10-40-20	200	73	4,800	2,400	96	410	410
WW-10-80-10	100	107	4,800	2,400	178	170	170
WW-10-80-15	150	107	4,800	2,400	178	290	290
WW-10-80-20	200	107	4,800	2,400	178	410	410
WW-16-60-10	100	104	8,400	4,200	240	270	270
WW-16-60-15	150	104	8,400	4,200	240	480	480
WW-16-60-20	200	104	8,400	4,200	240	690	690
WW-20-80-15	150	134	12,800	6,400	525	670	670
WW-20-80-20	200	134	12,800	6,400	525	990	990
WW-20-80-25	250	134	12,800	6,400	525	1,250	1,250

Table 01: Load capacities for complete carriage plates, confirm each with 4 housing bearings and plate

	Size 6 [mm]	Size 10 [mm]	Size 16 [mm]	Size 20 [mm]
single rail, round	●	●	●	●
single rail, square	●	●	●	●
double rail, round	●	●	●	●
double rail, square	●	●	●	●
complete System	●	●	●	●



Graph 01: Fv-Diagramm, maximum permissible dynamic loads (4 bearing system)

drylin® W | Design Rules



Floating bearings for all directions (± 1 mm) compensate misalignments and parallelism errors

Floating bearings facilitate assembly – only necessary for individual rails.

Assembly is easy with the drylin® WQ a square profile. Floating bearings for all directions (± 1 mm) compensate misalignments and parallelism errors between rails. This precludes jamming, otherwise only prevented by time-consuming parallel alignment of the system.

Although drylin® W is a profile rail system, it is able to compensate angular rotation errors about the x-axis. An angular adjustment of $\pm 7^\circ$ is possible here. This effectively eliminates the strain known to occur when fitting to sheet metal fabrications.

Possible combinations in mounted rail systems

Fixed

Floating



Fixed

Floating

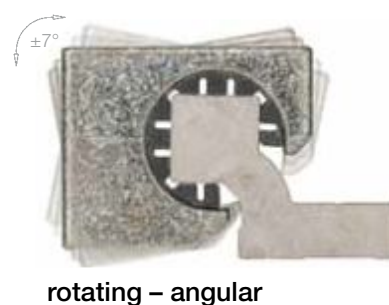
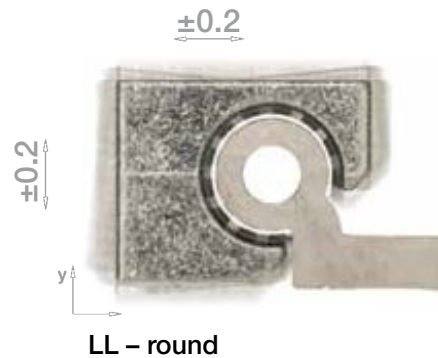


Fixed

Floating



Available floating bearing blocks



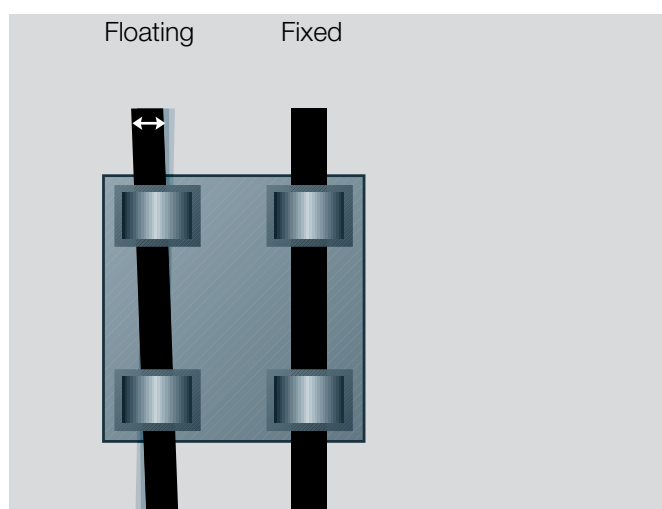
drylin® W | Design Rules

Floating bearings for linear slide guides

In the case of a system with two parallel guides, one side needs to be configured with floating bearings.

A suitable solution comprising fixed & floating bearings is available for every orientation, whether horizontal, vertical or lateral. This type of assembly prevents jamming and blockage on the guides resulting from discrepancies in parallelism. Floating bearings are created through a controlled extension of play in the direction of the expected parallelism error. This creates an additional degree of freedom on one side.

During assembly, it must be ensured that the floating bearings exhibit a similar degree of play in both directions. The contact surfaces on the guides and carriages should be sufficiently flat (for instance, milled down) to prevent strains from occurring in the system.

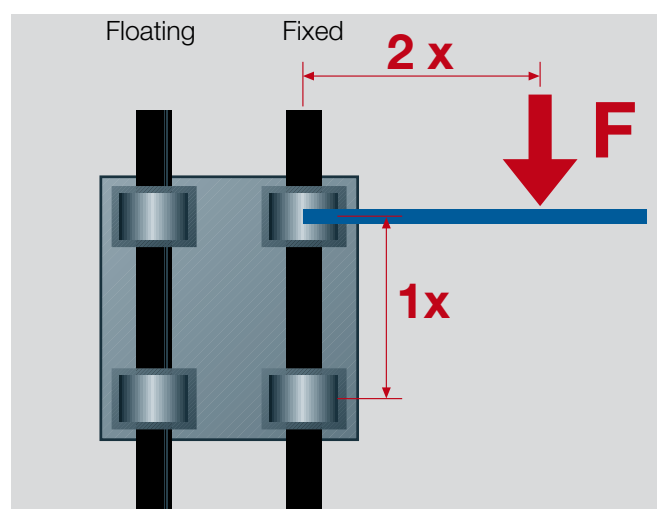


Graph 01: Automatic compensation of parallelism errors

Eccentric Forces

To ensure successful use of maintenance-free drylin® linear bearings, it is necessary to follow certain recommendations: If the distance between the driving force point and the fixed bearings is more than twice the bearing spacing (2:1 rule), a static friction value of 0.25 can theoretically result in seizure. This principle applies regardless of the value of the load or drive force.

The friction product is always related to the fixed bearings. The greater the distance between the drive and guide bearings, the higher the degree of wear and required drive force. Failure to observe the 2:1 rule during a use of linear slide bearings can result in uneven motion or even system blockage. Such situations can often be remedied with relatively simple modifications. If you have any questions on design and/or assembly, please contact our application engineers.



Graph 02: The 2:1 Rule



drylin® expert & lifetime calculation:

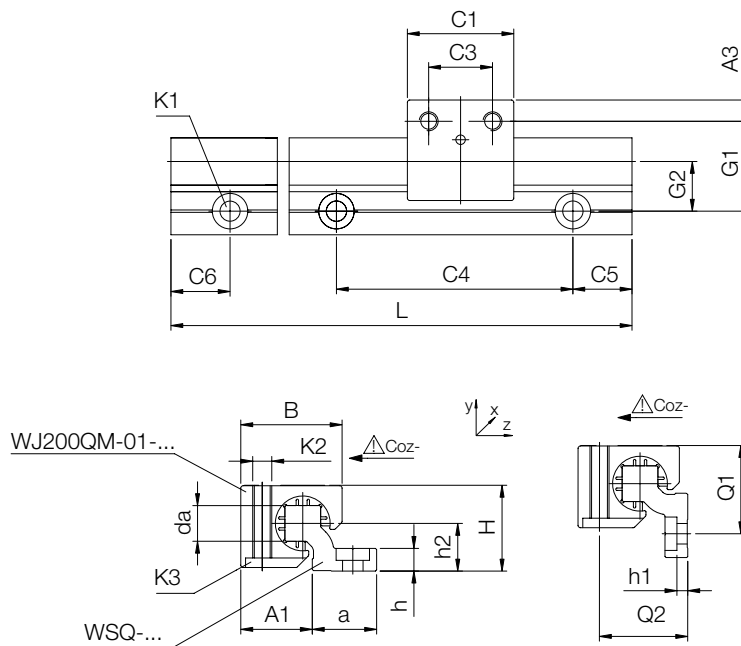
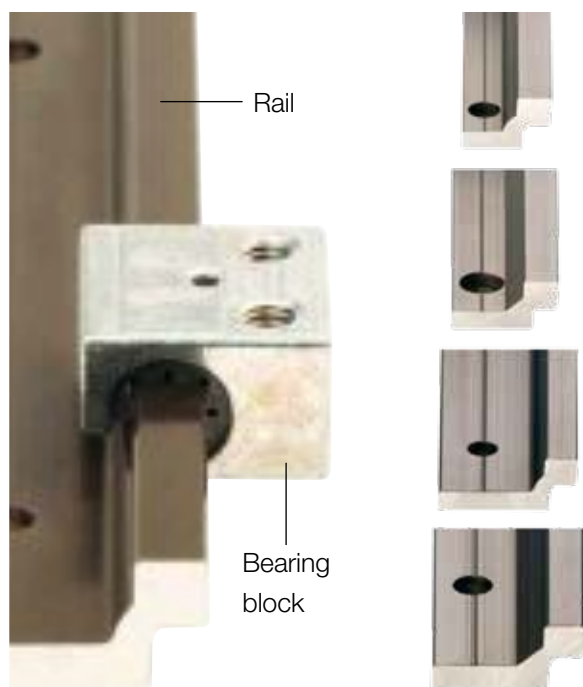
► www.igus.eu/drylin-expert




drylin® CAD configurator:

► www.igus.eu/drylin-cad-expert

Single rail and housing bearing, square



 Hard anodized surface
▶ page 788

drylin® W Guide Rails, Square – Load Data and Dimensions [mm]


Part number	Weight [kg/m]	H*	da	L	a	h	h1	h2	G1	G2	A1	Q1	Q2
		±0.07	-0.1	max.	-0.3								
WSQ-06	0.23	14	5	3,000	14	4	4*	7.5	18	10.5	13.5	17	15
WSQ-10	0.54	20	7.5	4,000	25	5.5	5.5*	11	27	17	18.5	26	21
WSQ-16	0.94	27	11.5	4,000	27	7.5	3.5	14	33	19	25	32	28
WSQ-20	1.41	36	15	4,000	27	9.5	4.5	20	38	21	30	37	37

Part number	C4	C5 min.	C5 max.	C6 min.	C6 max.	K1 for screw DIN 912	ly	lz	Wby	Wbz
							[mm²]	[mm²]	[mm³]	[mm³]
WSQ-06	60	20	49.5	20	49.5	M4**	2,200	640	220	100
WSQ-10	120	20	79.5	20	79.5	M6**	16,100	3,300	950	350
WSQ-16	120	20	79.5	20	79.5	M8	33,000	10,800	1,700	910
WSQ-20	120	20	79.5	20	79.5	M8	56,500	34,000	2,600	2,100

Standard bore pattern symmetrical: C5 = C6; please order C5 ≠ C6 with drawing

* Height dimension minus the bearing clearance tolerance

** Trough bore

Fits to housing bearing, square  ▶ page 849

 **delivery** from stock
time

 **prices** price list online
www.igus.eu/eu/drylinW

 **order key**
complete ▶ page 866

drylin® W Modular Guide Systems | Product Range

Single rail and housing bearing, square

All parts can be ordered individually
or as an assembled system

drylin® W Housing Bearings, Square – Load Data and Dimensions [mm]

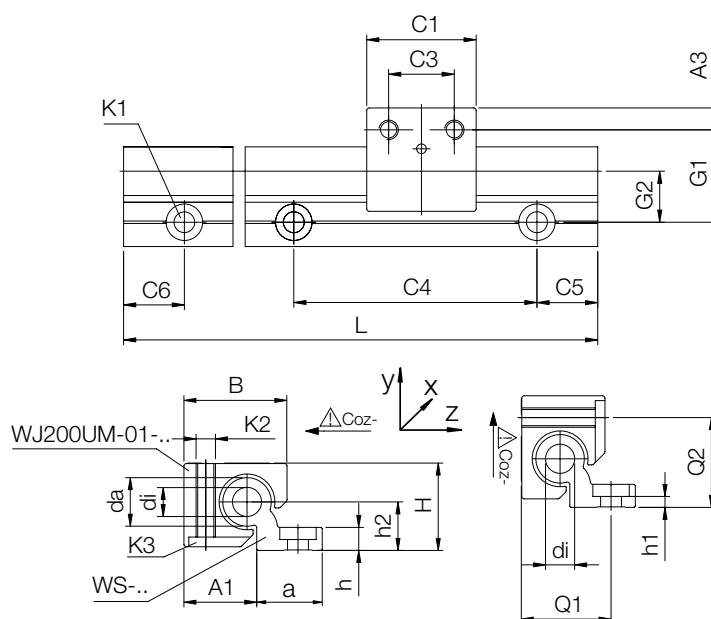
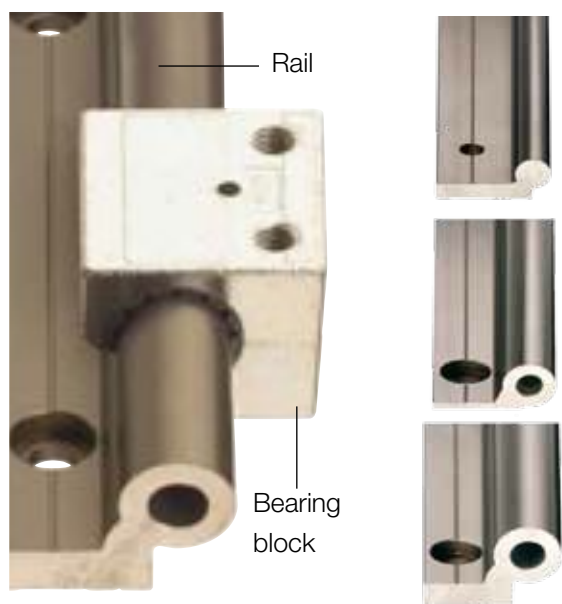
Part number	Floating bearing play	Floating bearing direction	Weight [g]	B	C1	C3	A3	K2	K3	Stat. Load Capac.		
										Coy [N]	Coz+ [N]	Coz- [N]
WJ200QM-01-06	–	–	16	18	19	10	4.5	M4	M3	420	420	140
WJ200QM-01-06-LLZ	± 0.5	z	16	18	19	10	4.5	M4	M3	420	420	140
WJ200QM-01-06-LLY	± 0.5	y	16	18	19	10	4.5	M4	M3	420	420	140
WJ200QM-01-10	–	–	41	26	29	16	6.5	M6	M5	1,200	1,200	250
WJ200QM-01-10-LLZ	± 0.7	z	41	26	29	16	6.5	M6	M5	1,200	1,200	250
WJ200QM-01-10-LLY	± 0.7	y	41	26	29	16	6.5	M6	M5	1,200	1,200	250
WJ200QM-01-16	–	–	100	34.5	36	18	9	M8	M6	2,100	2,100	400
WJ200QM-01-16-LLZ	± 1.0	z	100	34.5	36	18	9	M8	M6	2,100	2,100	400
WJ200QM-01-16-LLY	± 1.0	y	100	34.5	36	18	9	M8	M6	2,100	2,100	400
WJ200QM-01-20	–	–	190	42.5	45	27	9	M8	M6	3,200	3,200	500
WJ200QM-01-20-LLZ	± 1.0	z	190	42.5	45	27	9	M8	M6	3,200	3,200	500
WJ200QM-01-20-LLY	± 1.0	y	190	42.5	45	27	9	M8	M6	3,200	3,200	500

Order example: WJ200QM-01-06 for a housing bearing, square

WJ200QM-01-06-LLZ for a housing bearing, square with floating z-direction

Fits to single rail, square  page 848double rail, square  page 854delivery from stock
timeprices price list online
www.igus.eu/eu/drylinWorder key complete  page 866

Single rail and housing bearing, round



displayed assembling position not possible for WS-10



Hard anodized surface
▶ page 788

drylin® W Guide Rails, Round – Load Data and Dimensions [mm]


Part number	Weight [kg/m]	H* ±0.07	da -0.1	di	L max.	a -0.3	h	h1	h2	G1	G2	A1	Q1	Q2
WS-10	0.62	18	10	–	4,000	27	5.5	5.5**	9	27	17	16.5	–	–
WS-16	0.98	27	16	8.0	4,000	27	7.5	3.5	14	33	19	25	32	28
WS-20	1.32	36	20	10.2	4,000	27	9.5	4.5	20	38	21	30	37	37

Part number	C4	C5 min.	C5 max.	C6 min.	C6 max.	K1 for screw DIN 912	ly [mm ⁴]	lz [mm ⁴]	Wby [mm ³]	Wbz [mm ³]
WS-10	120	20	79.5	20	79.5	M6**	19,000	2,850	1,000	310
WS-16	120	20	79.5	20	79.5	M8	36,000	12,900	1,800	940
WS-20	120	20	79.5	20	79.5	M8	57,100	35,000	2,700	1,900

Standard bore pattern symmetrical: C5 = C6; please order C5 ≠ C6 with drawing

* Height dimension minus the bearing clearance tolerance

** Through bore-hole

Fits to Housing bearing, square  ▶ page 851
Hybrid Bearing ▶ page 853

 **delivery** from stock
time

 **prices** price list online
www.igus.eu/eu/drylinW

 **order key**
complete ▶ page 866

drylin® W Modular Guide Systems | Product Range

Single rail and housing bearing, round



Order key
complete ▶ Seite 866



All parts can be ordered individually
or as an assembled system

drylin® W Housing Bearing, Round – Load Data and Dimensions [mm]

Part number	Floating bearing play	Floating- bearing direction	Weight [g]	B	C1	C3	A3	K2	K3	Stat. Load Capacity		
										Coy [N]	Coz+ [N]	Coz- [N]
WJ200UM-01-10	–	–	41	26	29	16	6.5	M6	M5	1,200	1,200	250
WJ200UM-01-10-LL	±0.2	–	41	26	29	16	6.5	M6	M5	1,200	1,200	250
WJ200UM-01-16	–	–	100	34.5	36	18	9	M8	M6	2,100	2,100	400
WJ200UM-01-16-LL	±0.2	–	100	34.5	36	18	9	M8	M6	2,100	2,100	400
WJ200UM-01-20	–	–	190	42.5	45	27	9	M8	M6	3,200	3,200	500
WJ200UM-01-20-LL	±0.25	–	190	42.5	45	27	9	M8	M6	3,200	3,200	500
WJ200UM-01-25 New!			425	52.5	58	36	11	M10	M8	4,800	4,800	950

Order example: WJ200UM-01-10 for a housing bearing, round

WJ200UM-01-10-LL for a housing bearing, round with floating z-direction



- Manual adjustable clearance by “Turn-To-Fit” function (allen key included in delivery)
- Adjusting screw: max. torque 0.1 Nm
- 100% lubrication-free
- Compact dimensions
- 8 different rail profiles available

drylin® W Linear Guides with “Turn-to-Fit” – Dimensions [mm]

Part number	Weight [g]	B	C1	C3	A3	K2	H	SW	G1	Stat. Load Capacity		
										Coy [N]	Coz+ [N]	Coz- [N]
WJUME-01-10	43	26	29	16	6.5	M6	18	1.5	27	560	560	250
WJ200UME-01-16	110	34.5	36	18	9	M8	27	2.5	33	980	980	460
WJ200UME-01-20	222	42.5	45	27	9	M8	36	2.5	38	1,500	1,500	500

Fits to single rail, round ▶ page 850

double rail, round ▶ page 856



delivery from stock
time



prices price list online
www.igus.eu/eu/drylinW

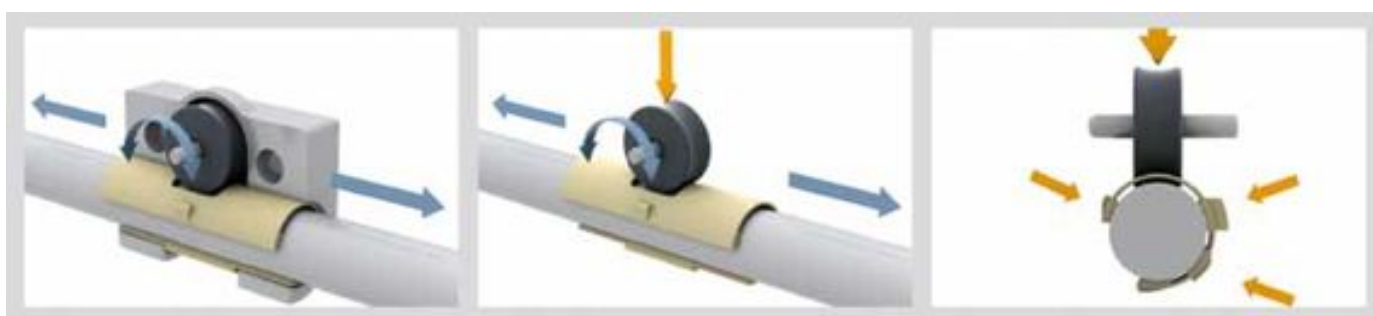


order key complete ▶ page 866

Hybrid linear bearing – roll and slide

drylin® W hybrid bearings offer a unique combination of plain and roller bearings. At a defined installation position, the required driving torque reduces itself significantly by the maintenance-free roller bearings. Shear forces and abuse forces are absorbed by the glider. The hybrid bearing is ideal for manual adjustments, especially in door adjustments.

- Glide-mounted plastic rollers
- Liner made of iglidur® J
- Low drive force needed, friction: 0.04–0.05 μ
- Cost-effective
- Can be combined with 7 linear profile rails



► www.igus.eu/eu/WJRM-video

drylin® W Compatible Guide Rails – Dimensions [mm]

Part number	Weight [g]	H	da	L	a	h	h2	G1	G2	C4	C5		C6		K1 for screw DIN 912
											min.	max.	min.	max.	
WS-10	0.62	18	10	4,000	27	5.5	9	27	17	120	20	79.5	20	79.5	M6
WS-16	0.98	27	16	4,000	27	7.5	14	33	19	120	20	79.5	20	79.5	M8
WS-20	1.32	36	20	4,000	27	9.5	20	38	21	120	20	79.5	20	79.5	M8
WS-10-40	1.00	18	10	4,000	40	5.5	9	30	20	120	20	79.5	20	79.5	M6
WS-10-80	1.50	18	10	4,000	74	5.5	9	27	17	120	20	79.5	20	79.5	M6
WS-16-60	1.96	27	16	4,000	54	7.5	14	43	29	120	20	79.5	20	79.5	M8
WS-20-80	3.38	36	20	4,000	74	9.5	20	38	21	120	20	79.5	20	79.5	M8

drylin® W Hybrid Linear Bearings – Load Data

Part number	Stat. load capacity	Dyn. load capacity Cz+			F · v
	Co	at total running distance (km)			
	[N]	10	100	200	max. [N · m/s]
WJRM-01-10	250	250	90	50	50
WJRM-01-16	400	400	140	70	80
WJRM-01-20	550	550	200	100	80

Fits to single rail, round  ► page 850

double rail, round  ► page 856

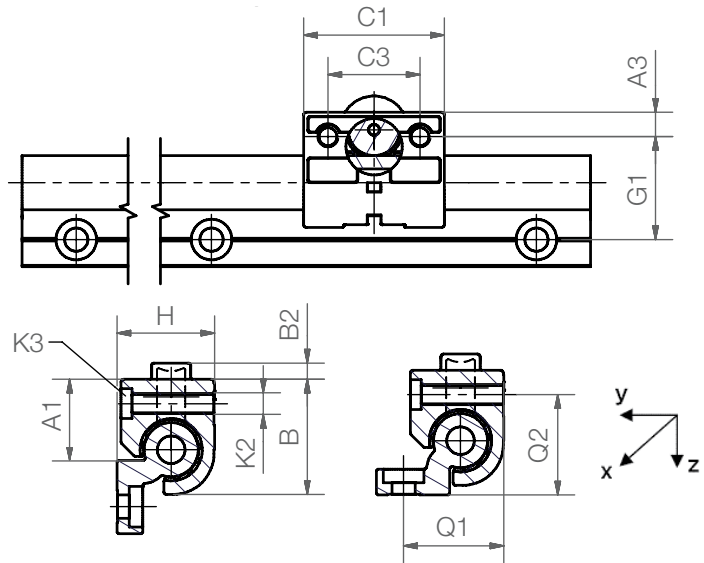
 **delivery** from stock
time

 **prices** price list online
www.igus.eu/eu/drylinW

 **order key**
complete ► page 866

drylin® W Modular Guide Systems | Product Range

Hybrid linear bearing – roll and slide



Shown installation position is not possible for combination of WJRM-01-10 with rail WS-10/WS-10-40/WS-10-80

drylin® W Hybrid Linear Bearings – Load Data and Dimensions [mm]

Part number	Friction in z-direction [μ]	Weight [g]	A1	A3	B	B2	C1	C3	G1	H	K2 for Thread	K3 for Screw [N]	Q1	Q2
WJRM-01-10	< 0.1	46	16.5	6.5	26	2.5	35	22	27	18	M6	M5	–	–
WJRM-01-16	< 0.1	131	25	9	34.5	5	48	30	33	27	M8	M6	32	28
WJRM-01-20	< 0.1	232	30	9	42.5	6	52	34	38	36	M8	M6	37	37



Adjustment sliding door at tool magazine



Adjustment camera slider ► www.igus.eu/camera



delivery from stock
time

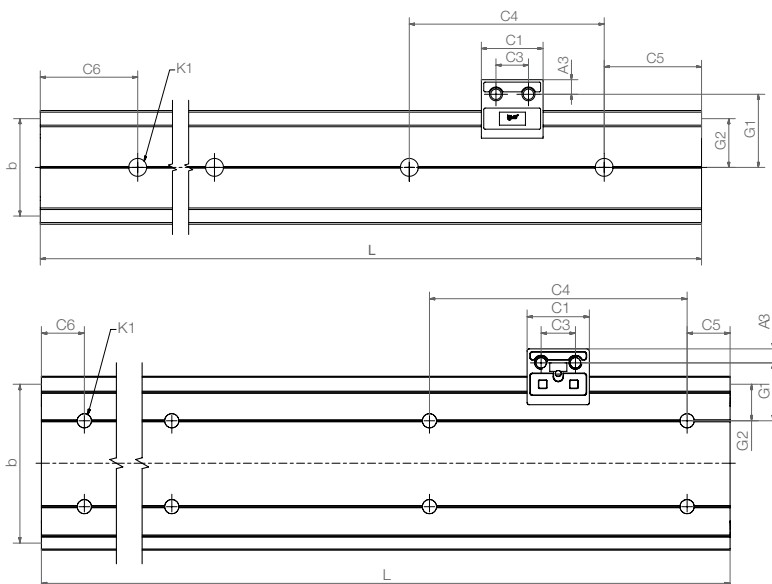


prices price list online
www.igus.eu/eu/drylinW

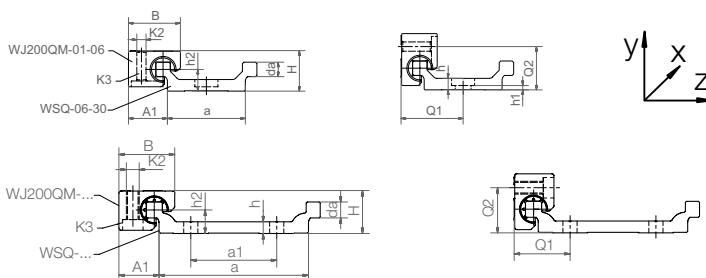
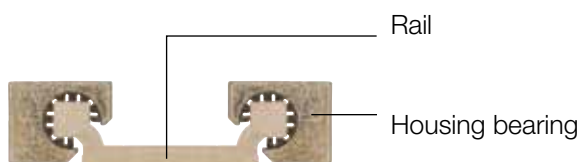


order key complete ► page 866

Double rail, square



i hard anodized surface
▶ page 788



drylin® W Guide Rails – Dimensions [mm]

Part number	Weight [kg/m]	H* ±0.07	da -0.1	L max.	a -0.3	A1	b	h	h1	h2	G1	G2	a1**	Q1	Q2
WSQ-06-30	0.45	14	5	3,000	27	13.5	30	4	4	7.5	22.5	15	-	21.5	15
WSQ-10-40	0.92	20	7.5	4,000	36	18.5	40	5.5	5.5	11	30	20	-	29	21
WSQ-10-80	1.41	20	7.5	4,000	70	25.0	74	5.5	5.5	11	27	17	40	26	21
WSQ-16-60 New!****	1.84	27	11.5	4,000	54	30.0	58	7.5	3.5	14	43	29	-	42	28

Part number	C4	C5 min. max.	C6 min. max.	K1 for Screw DIN 912	ly [mm ⁴]	lz [mm ⁴]	Wby [mm ³]	Wbz [mm ³]
WSQ-06-30	60	20 49.5	20 49.5	M5***	19,000	1,250	1,100	200
WSQ-10-40	120	20 79.5	20 79.5	M6***	71,600	5,580	3,000	610
WSQ-10-80	120	20 79.5	20 79.5	M6***	335,000	7,070	8,300	700
WSQ-16-60 New!****	120	20 79.5	20 79.5	M8	324,700	20,500	9,400	1,700

* Height dimension minus the bearing clearance tolerance

** WSQ-06-30 and WSQ-10-40 a single row of mounting holes down the centreline, WSQ-10-80 two parallel rows of mounting holes

*** Trough bore

**** in this catalog

Fits to housing bearing, square ▶ page 849

double carriage, square ▶ page 855

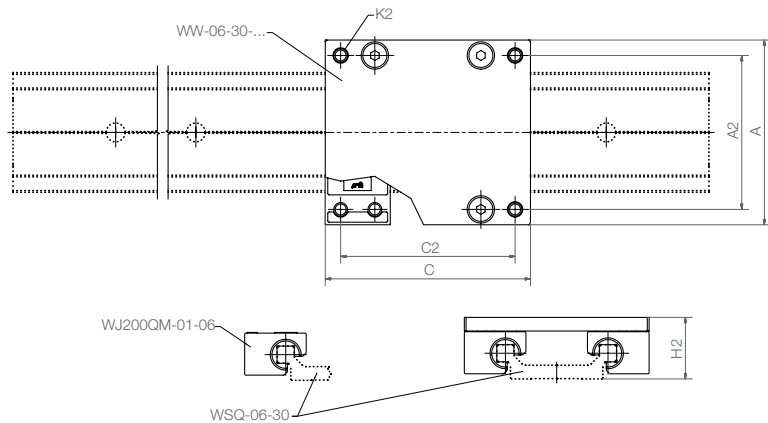
delivery from stock
time

prices price list online
www.igus.eu/eu/drylinW

order key
complete ▶ page 866

drylin® W Modular Guide Systems | Product Range

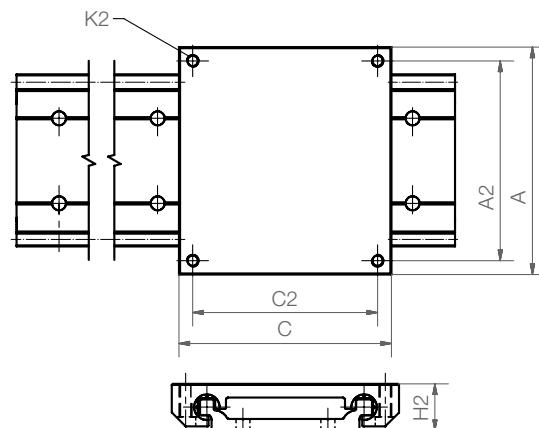
Guide carriage, fitted, square



drylin® W Guide Carriage, Fitted – Load Data and Dimensions [mm]

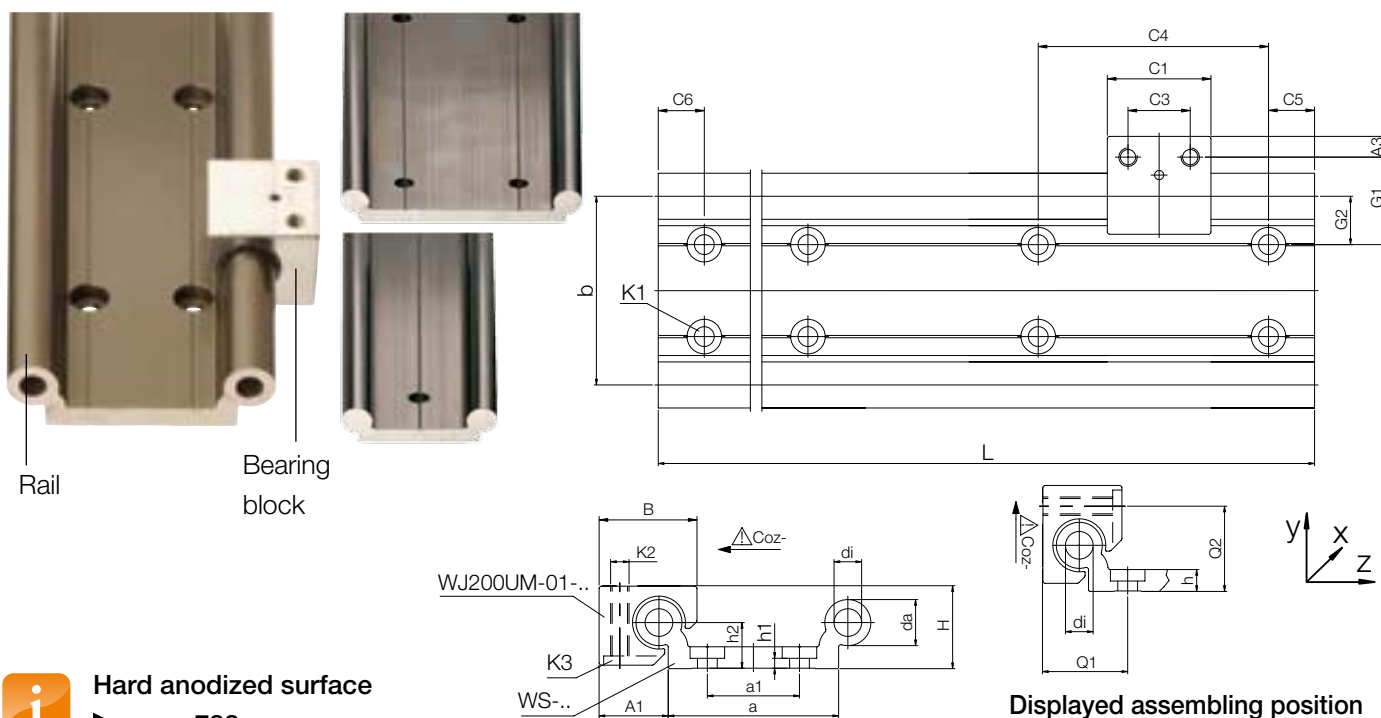
Part number	Part number Suitable	Weight [kg]	A Width	C Length	A2	C2	K2	H2 ±0.17	Stat. Load Capacity				
									Coy [N]	Coz [N]	Mox [Nm]	Moy [Nm]	Moz [Nm]
WW-06-30-06	WSQ-06-30	0.10	54	60	45	51	M4	18	1,680	840	25	34	34
WW-06-30-08	WSQ-06-30	0.11	54	80	45	71	M4	18	1,680	840	25	51	51
WW-06-30-10	WSQ-06-30	0.12	54	100	45	91	M4	18	1,680	840	25	68	68

drylin® W Mono-Slide Guide Carriage – Load Data and Dimensions [mm]



Part number	Weight [kg]	A Width	C Length	A2	C2	K2	H2 ±0.17	Stat. Load Capacity				
								Coy [N]	Coz [N]	Mox [Nm]	Moy [Nm]	Moz [Nm]
WWC-10-40-10	0.21	73	100	60	87	M6	22	4,800	2,400	96	170	170
WWC-10-40-15	0.32	73	150	60	137	M6	22	4,800	2,400	96	290	290
WWC-10-40-20	0.42	73	200	60	187	M6	22	4,800	2,400	96	410	410
WWC-10-80-10	0.28	107	100	94	87	M6	22	4,800	2,400	178	170	170
WWC-10-80-15	0.42	107	150	94	137	M6	22	4,800	2,400	178	290	290
WWC-10-80-20	0.56	107	200	94	187	M6	22	4,800	2,400	178	410	410
WWC-16-60-10	0.41	104	100	86	82	M8	30	8,400	4,200	240	270	270
WWC-16-60-15	0.61	104	150	86	132	M8	30	8,400	4,200	240	480	480
WWC-16-60-20	0.80	104	200	86	182	M8	30	8,400	4,200	240	690	690

Double rail, round



Displayed assembling position
not possible for WS-10-40 and
WS-10-80

drylin® W Guide Rails – Dimensions [mm]

Part number	Weight [kg/m]	H* ±0.07	da -0.1	di	L max.	a -0.3	A1	b	h	h1	h2	G1	G2	a1**	Q1	Q2
WS-10-40	1.00	18	10	-	4,000	40	16.5	40	5.5	5.5	9	30	20	-	-	-
WS-10-80	1.50	18	10	-	4,000	74	16.5	74	5.5	5.5	9	27	17	40	-	-
WS-16-60	1.96	27	16	8.0	4,000	54	25.0	58	7.5	3.5	14	43	29	-	42	28
WS-20-80	3.30	36	20	10.2	4,000	74	30.0	82	9.5	4.5	20	38	21	40	37	37
WS-25-120 New!	5.8	45	25	14.0	4,000	120	37.5	131	11.5	5.5	25	46.5	25.5	80	45.5	46

* Height dimension minus the bearing clearance tolerance

** WS-10-40 and WS-16-60 a single row of mounting holes down the centreline; WS-10-80 and WS-20-80 two parallel rows of mounting holes

Part number	C4	C5		C6		K1 for Screw DIN 912	ly [mm ⁴]	lz [mm ⁴]	Wby [mm ²]	Wbz [mm ²]
		min.	max.	min.	max.					
WS-10-40	120	20	79.5	20	79.5	M6***	91,000	5,100	3,600	590
WS-10-80	120	20	79.5	20	79.5	M6***	388,000	6,100	9,200	650
WS-16-60	120	20	79.5	20	79.5	M8	367,600	26,100	9,900	1,900
WS-20-80	120	20	79.5	20	79.5	M8	1,080,000	78,700	21,000	4,000
WS-25-120 New!	150	25	99.5	25	99.5	M10	4,867,000	215,000	62,400	8,500

Standard bore pattern symmetrical: C5 = C6; please order C5 ≠ C6 with drawing

*** Trough bore

Fits to housing bearing, round ► page 851
double carriage round ► page 857

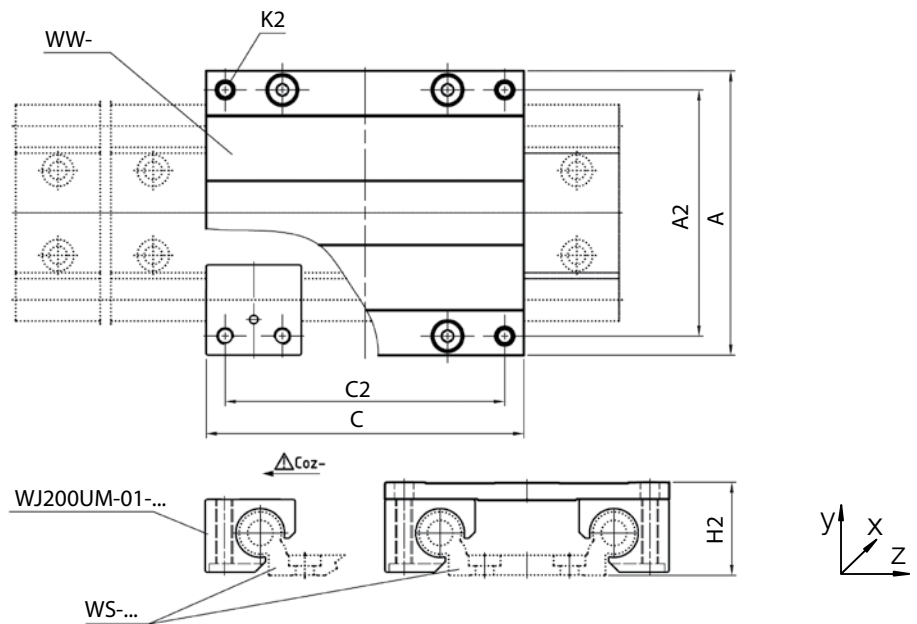
delivery from stock
time

prices price list online
www.igus.eu/eu/drylinW

order key
complete ► page 866

drylin® W Modular Guide Systems | Product Range

Guide carriage, fitted, round



drylin® W Guide Carriage, Fitted – Load Data and Dimensions [mm]

Part number	Part number Suitable Rail	Weight [kg]	Dimensions		A2	C2	K2	H2 ±0.17	Stat. Load Capacity				
			Width	Length					Coy [N]	Coz [N]	Mox [Nm]	Moy [Nm]	Moz [Nm]
WW-10-40-10*	WS-10-40	0.29	73	100	60	87	M6	24	4,800	2,400	96	170	170
WW-10-40-15*	WS-10-40	0.34	73	150	60	137	M6	24	4,800	2,400	96	290	290
WW-10-40-20*	WS-10-40	0.40	73	200	60	187	M6	24	4,800	2,400	96	410	410
WW-10-80-10*	WS-10-80	0.34	107	100	94	87	M6	24	4,800	2,400	178	170	170
WW-10-80-15*	WS-10-80	0.42	107	150	94	137	M6	24	4,800	2,400	178	290	290
WW-10-80-20*	WS-10-80	0.50	107	200	94	187	M6	24	4,800	2,400	178	410	410
WW-16-60-10	WS-16-60	0.71	104	100	86	82	M8	35	8,400	4,200	240	270	270
WW-16-60-15*	WS-16-60	0.84	104	150	86	132	M8	35	8,400	4,200	240	480	480
WW-16-60-20*	WS-16-60	0.97	104	200	86	182	M8	35	8,400	4,200	240	690	690
WW-20-80-15*	WS-20-80	1.20	134	150	116	132	M8	44	12,800	6,400	525	670	670
WW-20-80-20*	WS-20-80	1.30	134	200	116	182	M8	44	12,800	6,400	525	990	990
WW-20-80-25*	WS-20-80	1.50	134	250	116	232	M8	44	12,800	6,400	525	1,250	1,250
WW-25-120-15	New! WS-25-120	2.54	195	150	173	128	M10	55	19,200	9,600	1,250	880	880
WW-25-120-20	New! WS-25-120	2.80	195	200	173	178	M10	55	19,200	9,600	1,250	1,360	1,360
WW-25-120-25	New! WS-25-120	3.07	195	250	173	228	M10	55	19,200	9,600	1,250	1,840	1,840

Also available as version with adjustable clearance in installation sizes 10, 16 and 20:

Order example, WWE-10-40-15



* drylin® W manual clamp, assembled (optional)
suffix -HKA
▶ page 862

Fits to double rail round ▶ page 856



delivery from stock
time



prices price list online
www.igus.eu/eu/drylinW

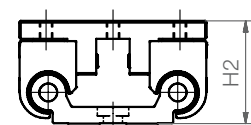
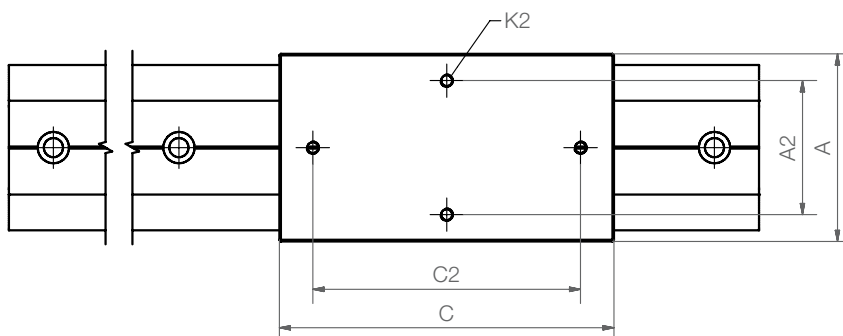


order key complete ▶ page 866

Hybrid carriage with rollers – now also for horizontal assemblies

Now roll and glide as a complete system on drylin® W double rails. Compact aluminum carriage with 4 hybrid bearings for easy and low-noise operation. The service performance of the carriage depends on the load. It is max. 1,000 km. When the wear limit of the rollers is reached, the system changes into sliding mode, which in turn leads to a higher drive force requirement.

- Lubricant-free
- Low displacement forces
- Silent and light weight



drylin® W hybrid carriage – Dimensions [mm]

Part number	Weight [kg]	A	C	A2	C2	K2	H2	Stat. load capacity				
								Coy [N]	Coz [N]	Mox [Nm]	Moy [Nm]	Moz [Nm]
WWH-16-60-15	0.96	84	150	60	120	M6	46 ±0.17	1,600	1,600	45	38	77

fitting rail: WS-16-60 ► page 856



drylin® W Modular Guide Systems | Product Range

Different industries call for different solutions. Whether for mechanical engineering, for machine tools, for medical technology, furniture construction, the packaging industry, and in many other sectors – with the drylin® W construction-kit, and others, igus® provides customised assistance for special applications.



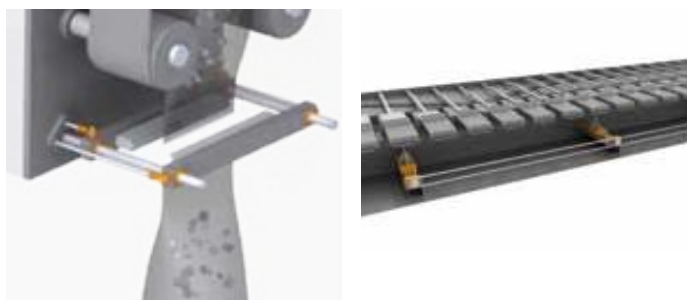
www.igus.eu/industry



Medical technology

Many medical applications, such as diagnostics, laboratory technology or physiotherapy, use lubricant-free drylin® W linear guides. Absolutely clean guides, very quiet motion, very rigid and torsionally stiff aluminum profiles and solutions for the smallest installation spaces - drylin® W provides an ideal linear construction-kit for all of these.

► www.igus.eu/medical



Packaging industry

Applications in these fields are very specific and must frequently meet special requirements. The drylin® W construction-kit provides a solution for every application. Insensitivity to dirt, corrosion resistance and easy cleaning are only some of the issues that play a role in lengthening the service life of your application, while also reducing down-times and costs.

► www.igus-packaging.com



Furniture construction

Contamination risks of fabrics, leather or wood components are avoided by omitting lubricants - weight savings by using plastics and aluminum - very quiet gliding, and all-in-all highly durable – the drylin® W construction-kit is ideally suited for furniture construction applications, such as desk and drawer slides and backrest adjustments for sofas and chairs.

► www.igus.eu/design

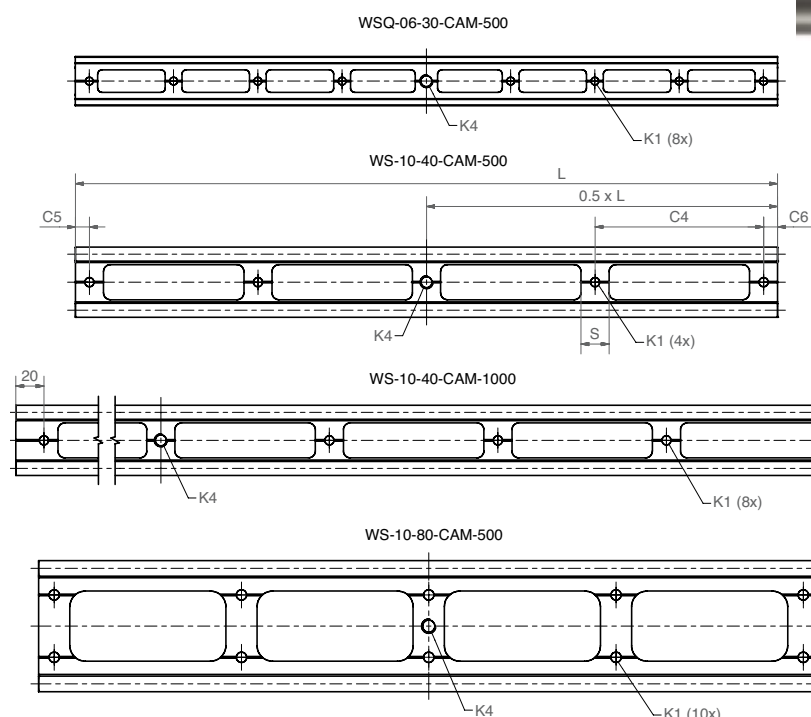
Linear motion camera guides

The drylin® W linear guides represent a plentiful construction-kit system for the construction of dollies and sliders. The system is easily transported due to the use of aluminum and plastics. Tuned gliding properties ensure a smooth and quiet motion, as well as soft panning of the depth of field. A dedicated drylin® W product configurator is available with special options (weight reduced RailIn/ inch connection) for camera technology.

► www.igus.eu/camera



Double rail, reduced weight



- 30% weight reduction by machined recesses
- Sizes: 0630, 1040 und 1080
- Lubrication free, quiet and light
- Standard lengths from stock
- Matching housing bearing and carriage made of plastic, aluminum, zinc die cast or stainless steel

drylin® W Guide Rail – Dimensions [mm]

Part number	Identic Profile	L	C4	C5	C6	S	K1 for Screw DIN 192	K4	Weight [g]
WSQ-06-30-CAM-500	WSQ-06-30	500	60	10	10	12	M5	3/8" 16-UNC*	159
WS-10-40-CAM-500	WS-10-40	500	120	10	10	20	M6	3/8" 16-UNC*	353
WS-10-40-CAM-1000	WS-10-40	1,000	120	20	20	20	M6	3/8" 16-UNC*	706
WS-10-80-CAM-500	WS-10-80	500	120	10	10	20	M6	3/8" 16-UNC*	482

* UNC = Unified National Coarse, anglo-saxon standard for screws and threads



Application example: Camera slider with standard rail and carriage

► www.igus.eu/camera

 **delivery** from stock
time

 **prices** price list online
www.igus.eu/eu/drylinW

 **order key** complete ► page 866

drylin® W Modular Guide Systems | Product Range

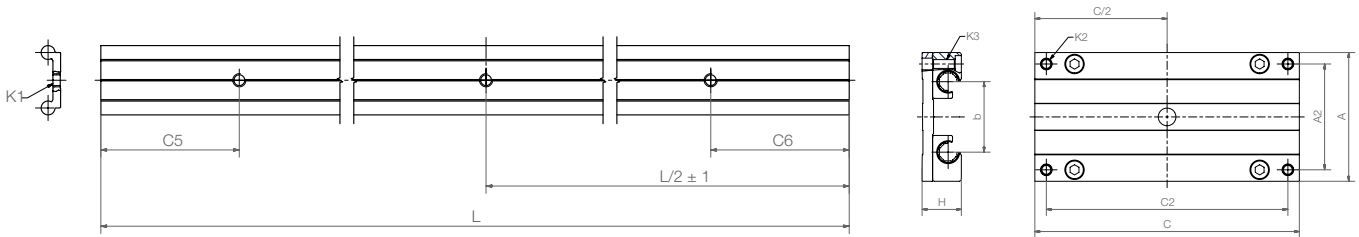
Slider-Rail



- Wear-resistant, smooth and quiet motion
- Adjustable brake level by the turn-to-fit function
- Lubricant-free
- Easy and fast assembly
- Other dimensions as standard rails WSQ ► [page 857](#) and WS ► [page 857](#)

Technical Options:

- Adjustable housing bearing (WWE... ► [page 857](#))
- Manual clamp (WW...-HKA ► [page 862](#))



drylin® W Special rails with 3 holes, 3/8" thread Dimensions [mm]

Part number	Size	C	C5 ± 1	C6 ± 1	Weight [kg/m]
WSQ-06-30-SL-1000	06	1,000	100	100	0.45
WSQ-06-30-SL-1500	06	1,500	100	100	0.45
WS-10-40-SL-1000	10	1,000	100	100	1.00
WS-10-40-SL-1500	10	1,500	100	100	1.00
WS-10-80-SL-1000	10	1,000	100	100	1.50
WS-10-80-SL-1500	10	1,500	100	100	1.50
WS-16-60-SL-1000	16	1,000	100	100	1.96
WS-16-60-SL-1500	16	1,500	100	100	1.96
WS-20-80-SL-1000	20	1,000	100	100	3.30
WS-20-80-SL-1500	20	1,500	100	100	3.30

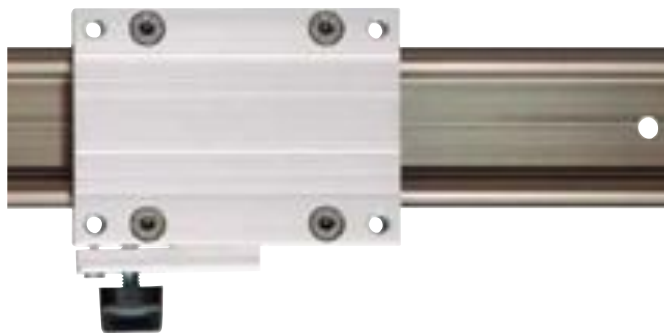
drylin® W Complete carriage with ø10 mm through hole for 3/8" thread Dimensions [mm]

Part number	Size	C	A	Part number	Size	C	A
WW-06-30-06-SL	06	60	54	WW-16-60-10-SL**	16	100	104
WW-06-30-08-SL	06	80	54	WW-16-60-15-SL* **	16	150	104
WW-06-30-10-SL	06	100	54	WW-16-60-20-SL* **	16	200	104
WW-10-40-10-SL* **	10	100	73	WW-20-80-15-SL* **	20	150	134
WW-10-40-15-SL* **	10	150	73	WW-20-80-20-SL* **	20	200	134
WW-10-40-20-SL* **	10	200	73	WW-20-80-25-SL* **	20	250	134
WW-10-80-10-SL* **	10	100	107				
WW-10-80-15-SL* **	10	150	107				
WW-10-80-20-SL* **	10	200	107				

* optional with integrated manual clamp (add suffix "-HKA")

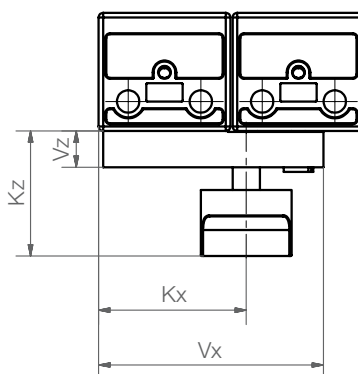
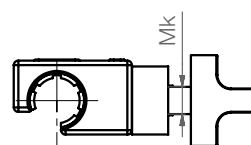
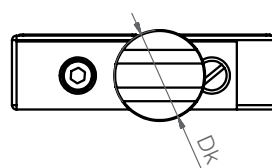
** optional with adjustable "Turn-To-Fit" bearing (Order example: WWE-...)

Accessories: manual clamp



drylin® W manual clamping, for simple positioning tasks

- Cost-efficient option
- Universally applicable
- Clamping force based on tightening torque
- Clamping by friction locking



drylin® W Accessories – Load Data and Dimensions [mm]

Part number	Mk	Vx	Kx	Vz	Kz	Dk	Min. holding strength**	Min. tightening torque
WHKA-10*	M6	50	33	8	28	20	30 N	0.8 Nm
WHKA-16*	M8	72	32	10	31	26	60 N	1.5 Nm
WHKA-20*	M8	90	29	10	31	26	70 N	1.5 Nm

* Manual clamp is also available as complete carriage (suffix HKA, order example WW-10-40-10-HKD)
 ► complete carriage WW, page 857


** Condition: dry rail surface

Hint:

The creep behavior of the clamped plastic causes a slackening in clamping force over time (up to 70 %). Therefore safety-related parts should not be clamped.

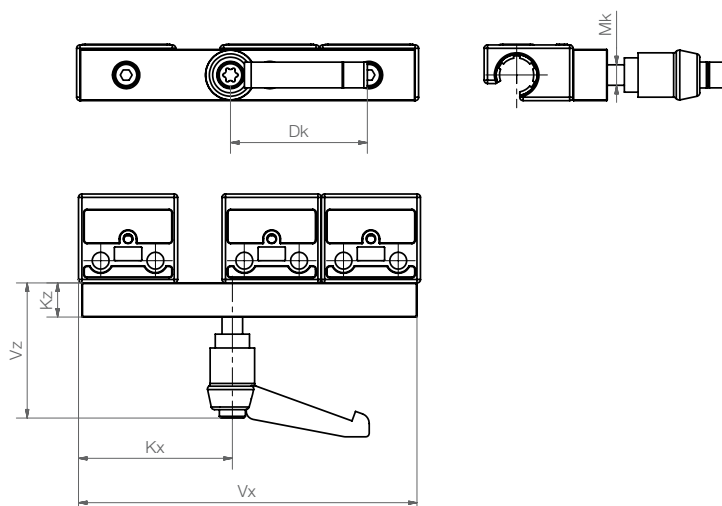
 **delivery** from stock
time

 **prices** price list online
www.igus.eu/eu/drylinW

 **order key**
complete ► page 866

drylin® W Modular Guide Systems | Product Range

Accessories: manual clamp



drylin® W manual clamping for high holding strength

- Available as single-part or assembled to guide carriage
- Clamping force based on tightening torque
- Clamping by friction locking



drylin® W Accessories – Load Data and Dimensions [mm]

Part number	Mk	Vx	Kx	Vz	Kz	Dk	Min. holding strength**	Min. tightening torque
WHKD-1010*	M6	100	45	40	10	40	70 N	2.5 Nm
WHKD-1015*	M6	150	95	40	10	40	70 N	2.5 Nm
WHKD-1615*	M8	150	81	40	12	40	90 N	3.5 Nm
WHKD-1620*	M8	200	131	10	12	40	90 N	3.5 Nm
WHKD-2015*	M8	150	63	40	12	40	90 N	3.5 Nm
WHKD-2020*	M8	200	113	40	12	40	90 N	3.5 Nm

* Manual clamp is also available as complete carriage (suffix HKA, order example WW-10-40-10-HKD)
▶ complete carriage WW, page 857

** Condition: dry rail surface

Hint:

The creep behavior of the clamped plastic causes a slackening in clamping force over time (up to 70 %). Therefore safety-related parts should not be clamped.



delivery from stock
time

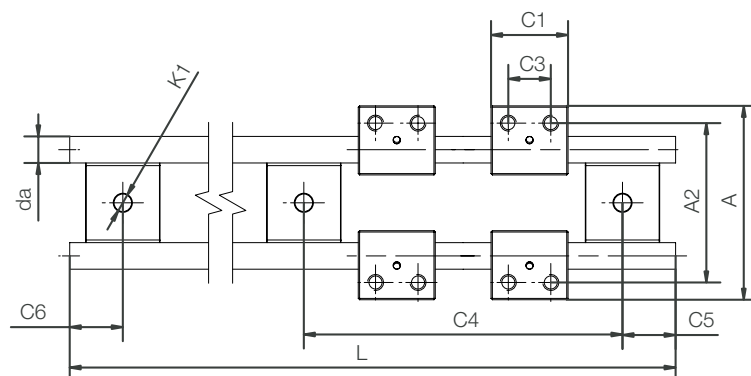


prices price list online
www.igus.eu/eu/drylinW



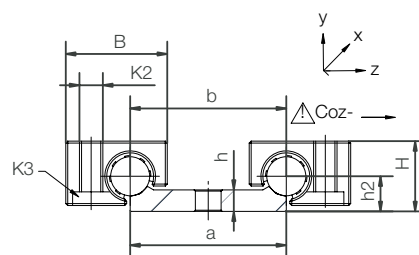
order key complete ▶ page 866

Double rail and housing bearing, round made of stainless steel V4A



Material for housing and shaft support
Shaft

1.4408
1.4571



drylin® W Guide Rail, Double, Ø 10 mm – Dimensions [mm]

Part number	Suitable bearing Part number	Weight [kg/m]	da h9	L max.	a -0.3	b	h	h2
WS-10-40-ES-FG	WJUM-01-10-ES-FG	1.58	10	3,000	40	40	5.5	9

Part number	C4	C5 min.	C5 max.	C6 min.	C6 max.	K1 for Screw DIN 912
WS-10-40-ES-FG	120	20	79.5	20	79.5	M6



drylin® W Housing Bearing – Load Data and Dimensions [mm]

Part number	Weight [g]	H ±0.07	B	C1	C3	A	A2	K2	K3 Counter- sunk head screw	Stat. Load Capac.		
										Coy	Coz+	Coz-
									[N]	[N]	[N]	
WJUM-01-10-ES-FG*	57	18	26	29	16	73	60	M6	M5	3,800	3,800	950

* alternative with XUMO-01-10 liners for high temperatures available

Part number: WXUM-01-10-ES-FG



delivery 8–14 days
time



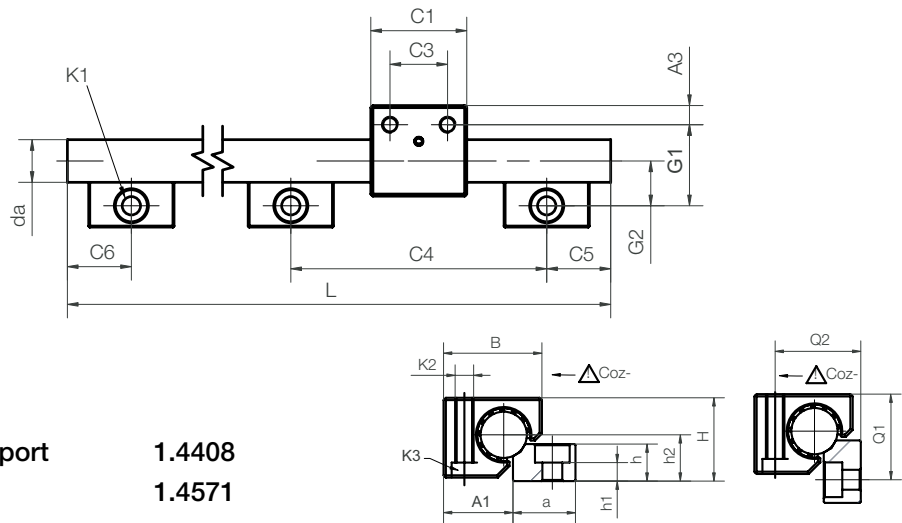
prices price list online
www.igus.eu/igudrylinW



order key complete ▶ page 866

drylin® W Modular Guide Systems | Product Range

Single rail and housing bearing, round made of stainless steel V4A



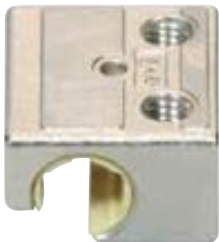
Material for housing and shaft support **1.4408**
Shaft **1.4571**

drylin® W Guide Rail, Single, Ø 20 mm – Dimensions [mm]

Part number	Suitable bearing	Weight	da	L	a	h	h2	G2
Part number		[kg/m]	h9	max.	-0.3			
WS-10-ES-FG	New! WJUM-01-10-ES-FG	0.87	10	3,000	27	5.5	9	17
WS-16-ES-FG	New! WJUM-01-16-ES-FG	2.22	16	3,000	27	12	14	19
WS-20-ES-FG	WJUM-01-20-ES-FG	3.37	20	3,000	27	16	20	21

Part number	C4	C5 min.	C5 max.	C6 min.	C6 max.	K1 for Screw	h1	ly	lz	Wby	Wbz
						DIN 912		[mm²]	[mm²]	[mm³]	[mm³]
WS-10-ES-FG	New! 120	20	79.5	20	79.5	M6*	5.5	491	491	98	98
WS-16-ES-FG	New! 120	20	79.5	20	79.5	M8	4.5	3,217	3,217	402	402
WS-20-ES-FG	120	20	79.5	20	79.5	M8	8	7,854	7,854	785	785

* Through bore-hole



drylin® W Housing Bearing – Load Data and Dimensions [mm]

Part number	Weight	H	B	C1	C3	G1	A3	A1	K2	K3	Q1	Q2	Stat. Load	Capac.	
	±0,07									Counter-sunk head screw			Coy	Coz+	Coz-
	[g]												[N]	[N]	[N]
WJUM-01-16-ES-FG	New! 134	27	34.5	36	18	33	9	25	M8	M6	32	38	6,900	6,900	1,450
WJUM-01-20-ES-FG*	280	36	42.5	45	27	38	9	30	M8	M6	37	37	11,000	11,000	1,900

* alternative with XUMO-01-10 liners for high temperatures available, Part number: WXUM-01-20-ES-FG



delivery **8–14 days**
time



prices **price list online**
www.igus.eu/eu/drylinW



order key **complete** ▶ page 866



Order key complete System:

WK-10-40-15-01-1500-HKA C5=20



Rail Options

leave blank: Standard with mounting holes
C5= ... mm: If hole spacing is not symmetrical

Carriage options

blank: Standard
-HKA: SCarriage with assembled clamp
(available sizes/lengths ► **page 862**)

Length of rail

Number of carriage plates

Length of carriage plate

Support width

Shaft diameter

Complete system

WK: complete System with Rail and carriage

Declaration:

WK-10-40-15-01-1500: Complete system with rail (WS-10-40) with length 1,500 mm and width 40 mm, and a guiding carriage (WW-10-40-15) with length 150 mm and width 73 mm.

Valid for guide rails:

Standard bore pattern symmetrical: C5=C6; please order C5≠C6 with drawing.

WSQ-... square

WS-... round

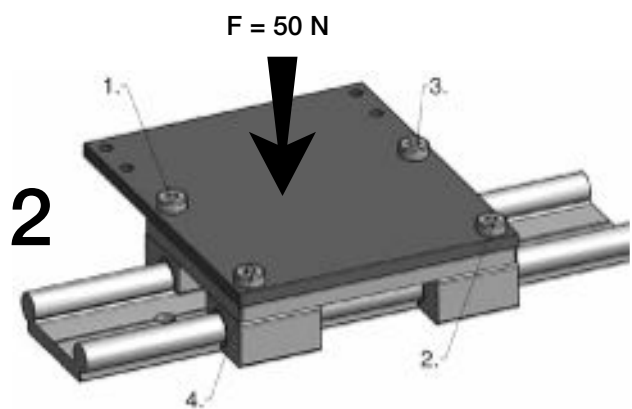
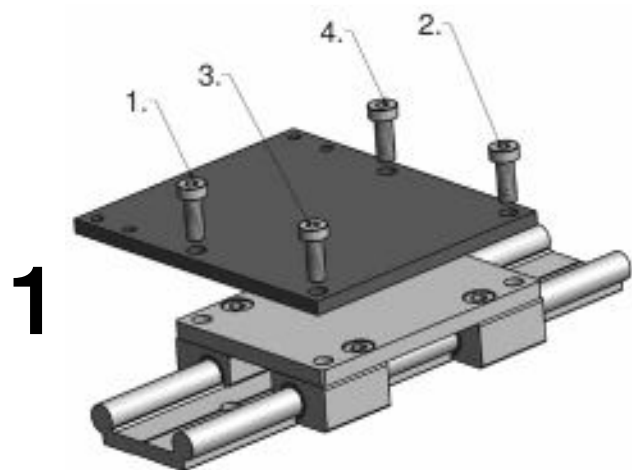
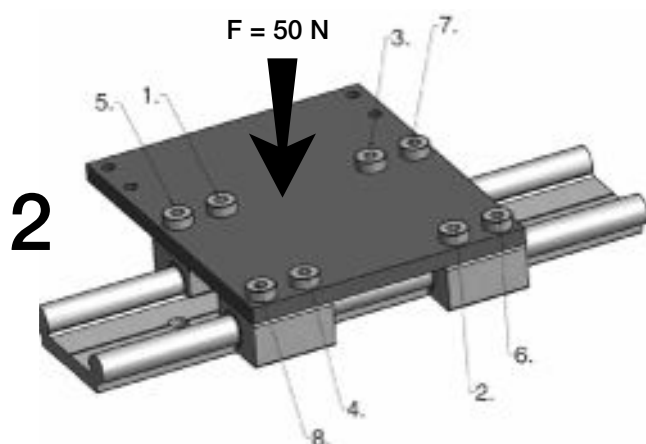
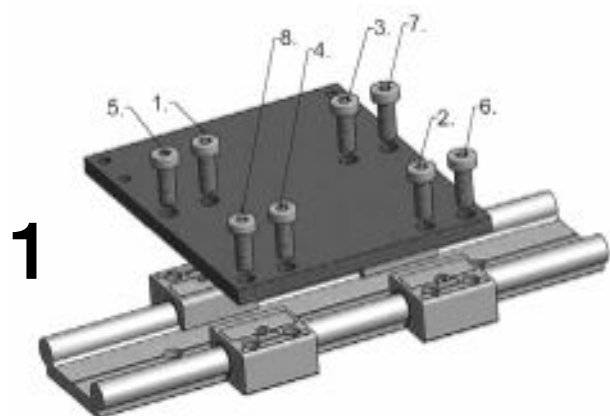
- CAM machined cut-out

drylin® W alternate plastic liners

Size	Material	Housing bearing	Geometry	Part number Gleitfolie
10/16/20	iglidur® J200	WJ200UM-01-ø	round	J200UMO-01-ø
10/20 (Floating bearing)	iglidur® J200	WJ200UM-01-ø LL	round	J200UM0-01-ø LL
10/16/20	iglidur® X	WXUM-01-ø	round	XUMO-01-ø
10 (adjustable)	iglidur® J	WJUME-01-10	round	JUME-01-10
16/20 (adjustable)	iglidur® J200	WJ200UME-01-ø	round	J200UME-01-ø
6/10/16/20	iglidur® J200	WJ200QM-01-ø	square	J200QM-01-ø
6/10/16/20 (Floating bearing)	iglidur® J200	WJ200QM-01-ø LLY/LLZ	square	J200QM-01-LL*

* Depending on assembly direction, can be used as a y or z floating bearing

drylin® W | Installation Instructions

**drylin® W rail with housing bearings**

During the installation process, a compressive force of minimum 50 N is recommended on the centre of the mounting surface. Alternatively, a plastic hammer/soft face hammer can be used during and after the mounting to align the bearing.

Size	Max. tightening torque [Nm]	Nut width
W-06	1.5	M4
W-10	6.0	M6
W-16	15.0	M8
W-20	15.0	M8

drylin® W rail with complete slide system

During the installation process, a compressive force of minimum 50 N is recommended on the centre of the mounting surface. Alternatively, a plastic hammer/soft face hammer can be used during and after the mounting to align the bearing.

Size	Max. tightening torque [Nm]	Nut width
W-06	1.5	M4
W-10	6.0	M6
W-16	15.0	M8
W-20	15.0	M8



Please refer to the drawing for the correct screw assembly sequence.