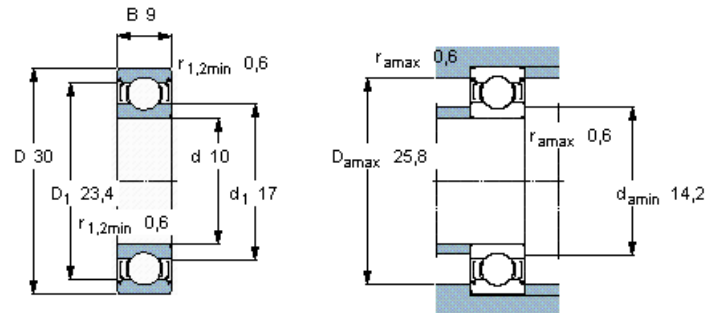


Deep groove ball bearings, single row, SKF Energy Efficient (E2) bearings



Principal dimensions			Basic load ratings		Fatigue load limit P_u	Speed ratings		Mass	Designation
d	D	B	dynamic	static		Reference speed	Limiting speed		
mm			kN		kN	r/min		kg	-
10	30	9	5,07	2,32	0,098	61000	32000	0,032	E2.6200-2Z/C3



Calculation factors

k_r 0,025
 f_0 13