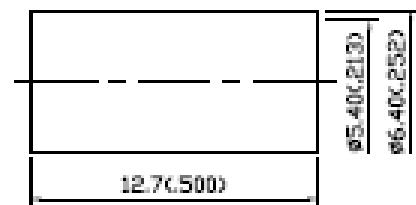
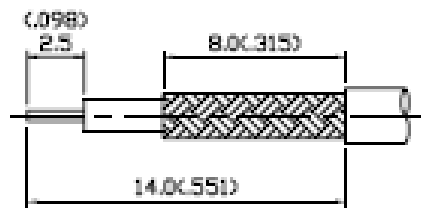
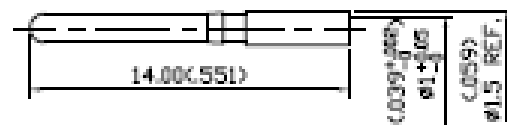
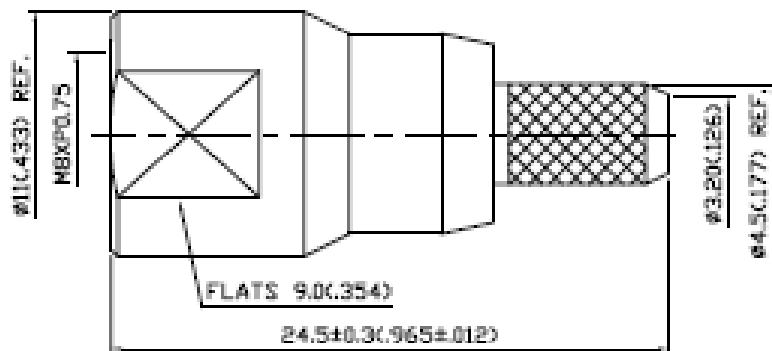


NO	DESCRIPTION	DATE
△	ADD STRIPPING DIMENSION BACKGROUND FORMAT UPDATED	03.02.10'



△ STRIPPING DIMENSION

1.0 ELECTRICAL

- 1.1 FREQUENCY RANGE: DC-900 MHz
- 1.2 NOMINAL IMPEDANCE: 50 OHM

2.0 MATERIALS

- 2.1 BODIES: BRASS PER JIS-C3604
- 2.2 CENTER CONTACT: BRASS PER JIS-C3604
- 2.3 INSULATION: TEFLON PER ASTM D1457 AND ASTM D1710
- 2.4 CRIMP FERRULE: BRASS PER JIS-C2700

3.0 FINISHES AND OTHERS

- 3.1 SEE BELOW TABLE FOR DETAILS.

4.0 MECHANICAL

- 4.1 FOR USE WITH RG58U OR SIMILAR STYLE CABLE
- 4.2 CABLE ATTACHMENT: OUTER: CRIMP, INNER: CRIMP
- 4.3 CRIMP SIZE REQUIRED: CONTACT: 1.06(.042) SQ. CRIMP TOOL
FERRULE: 6.5(.255) HEX. CRIMP TOOL

5.0 ENVIRONMENTAL

- 5.1 OPERATING TEMPERATURE RANGE: -55° C TO +125° C

5	CRIMP FERRULE	BRASS	1	NICKEL
4	CENTER CONTACT	BRASS	1	GOLD
3	CHASSIS	BRASS	1	NICKEL 100µ" MIN.
2	INSULATION	TEFLON	1	NONE
1	BODY	BRASS	1	NICKEL 100µ" MIN.
NO	DESCRIPTION	MATERIAL	Q'TY	FINISH



APPROVED by _____ DATE: _____

DESCRIPTION		FME STRAIGHT PLUG CRIMP								
製 圖	DRAWN	TOLERANCE	品名	23-07-5	T.G.N	580	日	DATE	版	REV.
	Yoko		X	±0.2	TITLE	\ROHS COMPLIANT	(500)	期	12.20.02'	次
檢 圖	CHECK	ANGLE	單位	DWG.NO.	23-0099					
	Jacky		.XX	mm(in)						
認 定	APPROVAL	SCALE	比例							
	Lewis		±5°	4:1						