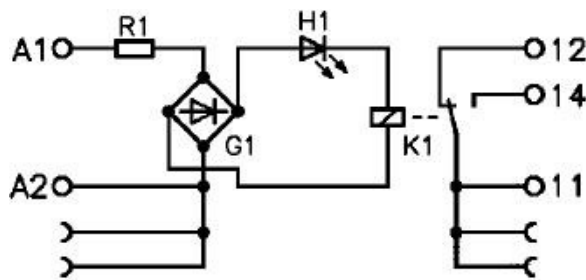


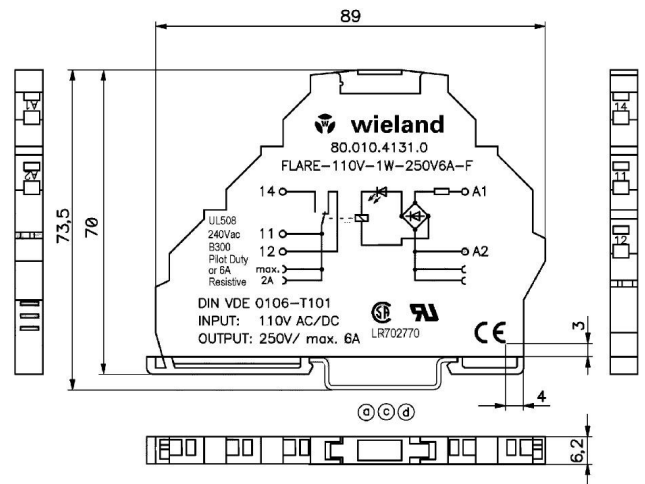
flare 110V-1W-250V6A-F

flare 110V-1W-250V6A-F
 Compact coupling relay
 110 V AC/DC
 80.010.4131.0

- Compact coupling relay
- Input voltage range 93,5 ... 121 V AC/DC
- 1 changeover contact
- Mounting width 6,2 mm



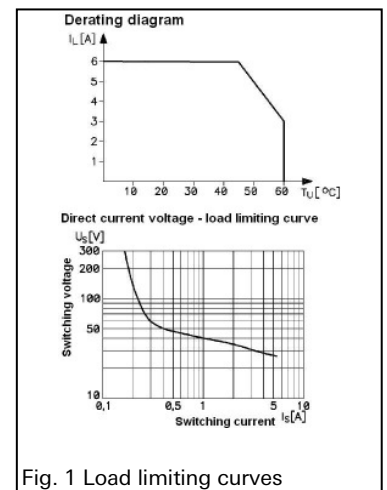
Wiring diagram



Dimensional diagram

Technical Data

flare 110V-1W-250V6A-F	Order no. 80.010.4131.0
Coil circuit	
Operating voltage	110 V AC/DC
Minimum input voltage	93,5 V AC/DC
Maximum input voltage	121 V AC/DC
Nominal input current	3,7 mA
Nominal input capacity	0,48 W
Status display	LED green
Switching characteristics	
Contacts	1 changeover contact
Contact material	AgSnO ₂
Maximum switching voltage	250 V AC / 300 V DC (see Fig. 1 Load limiting curves)
Maximum continuous current	6 A (see Fig. 1 Load limiting curves)
Maximum starting current	10 A
Maximum switching current	6 A AC (see Fig. 1 Load limiting curves)
DC1 30 / 110 / 220 V DC	
Maximum switching capacity AC 15	1500 V A / 120 W
Minimum selectable voltage	24 V
Minimum selectable current	8 mA DC
Mechanical life	2 x 10 ⁷



**flare 110V-1W-250V6A-F****Technical Data**

flare 110V-1W-250V6A-F	Order no. 80.010.4131.0
Electrical life	80 x 10 ³ (230 V AC) 60 x 10 ⁴ (24 V DC)
Maximum switching frequency	10 Hz
Pick-up delay	10 ms
Release delay	15 ms
General Data	
Width	6,2 mm
Height	89 mm
Depth	70 mm
Isolation voltage of input/output	4 kV eff.
Ambient temperature	0 ... +60° C (see Fig. 1 Load limiting curves)
Storage temperature	-40 ... +55° C
Degree of protection (IP)	IP20
Mounting rail	TS35 acc. EN60715
Connection Data	
Connection type	Spring clamp terminals
Wire range fine-stranded min	0,25 mm ²
Wire range fine-stranded max	1,5 mm ²
Wire range solid min	0,25 mm ²
Wire range solid max	2,5 mm ²
Connectable via pluggable jumper	50
Approvals	
Conformity	CE-conformity
Approvals and Standards	UR, CSA