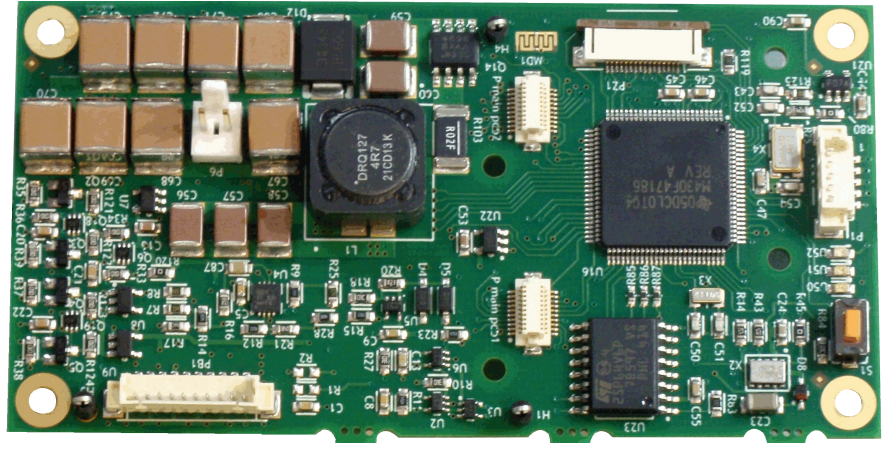


Features/Benefits

- Subsea radio module for communications, data logging, control and multiplexing
- Seawater Range of up to 5m
- Seabed/concrete Range: up to 5m
- Air Range: up to 7m
- Crosses water-air boundary
- Integrates with instrumentation using 4-20mA, Digital IN/OUT, RS232/ RS485
- Integrates with ROV or AUV using RS232/ RS485
- Wireless ON/OFF switch for subsea skids
- Multiplexer – converts from analogue and digital to serial
- Data logger – stores up to 400,000 time-stamped samples
- Crosses water-air, water-seabed boundary
- Ultra-low power sleep mode for extended deployment
- Point-to-point and static network configurations
- User-adjustable transmit power
- Time accuracy is +/-3ppm at 25°C, +/-25ppm from -40 to +85°C



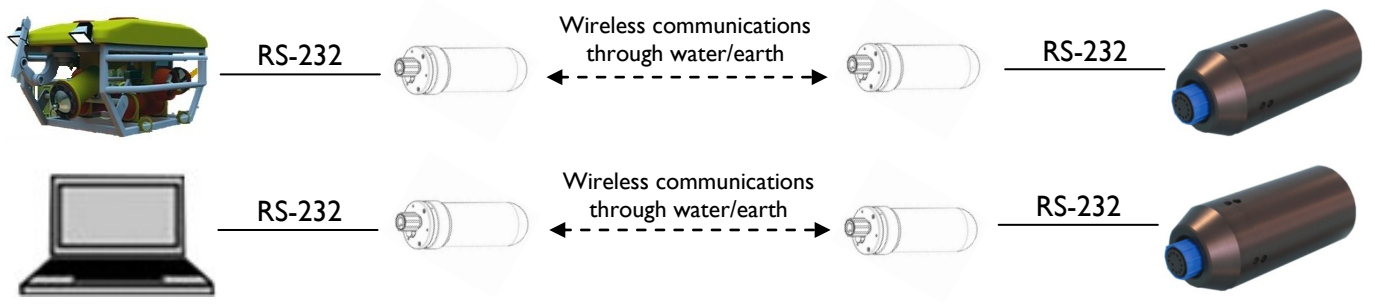
Overview

Seatooth® S100-OEM: is a compact, subsea radio multiplexer/datalogger/controller designed for integration with subsea instrumentation, vehicles and divers. It streams data at up to 2.4kbps over up to 5m through seawater, and the seabed/water and water/air boundaries.

The S100 supports the most commonly used interfaces – 4-20mA, Digital IN/OUT, RS-232 and RS-485. It can be used as a multiplexer to convert signals from analogue and digital to serial formats, as an ON/OFF controller for remote devices and as a data logger to store up to 400,000 time-stamped data points.

Seatooth® S100 OEM is suited for a wide variety of applications including remote sensing, condition monitoring, wireless SCADA, diver networking and radio frequency identification (RFID).

Network Architectures



WFS Head Office
 7 Houstoun Interchange Business Pk, Livingston, Edinburgh, EH54 5DW, UK
 Tel: +44 (0) 845 862 6600



WFS Houston
 777 N. Eldridge Parkway, Suite 280, Houston, TX 77079-4497, USA
 Tel: +1 (832) 460 4435

Product Specifications

I/O

- 2 X 4-20mA
- 2 X DIGITAL IN (470Ohm)
- 2 X DIGITAL OUT (externally configurable)
- 1 X RS232
- 1 X RS485 (optional) 2 wire or 4 wire

POWER REQUIREMENTS

- Power supply: 12-30V DC
- Transmit: 7W
- Receive: 86mW (12mA at 7.2V)
- Sleep: 360μW (50μA at 7.2V)

DATALOGGER

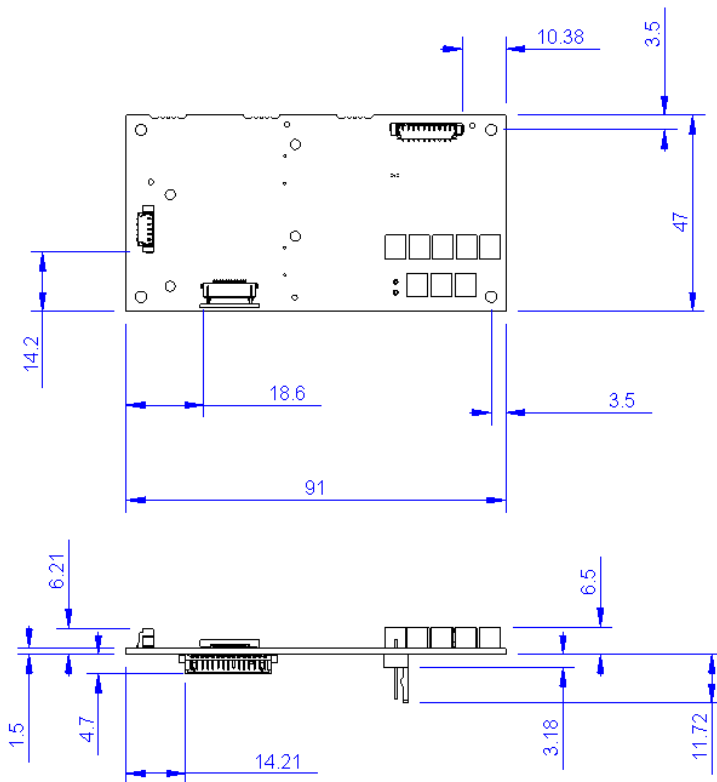
- Sample rate: up to 50 samples/sec
- Memory: 8MB (32MB option)

ENVIRONMENTAL

- Operating temperature: -10 to +60°C
- Storage Temperature: -20 to +60°C

OPTIONS (Requires Expansion Board)

- RS-232-Isolated
- RS-485-Isolated



Seatooth® S100OEM Standard Development Kit includes:

1. 2 X Seatooth S100 OEM board with RS-232 low power expansion board
2. 2 X TX Antennas attached on a mounting board
3. 2 X RX Antennas attached on a mounting board
4. 2 X RS-232 cable
5. 2 xRS-232 to USB cable
6. Power Cable
7. 1 x USB dongle: GUI, Manual, RS-232 driver
8. Printed hand-out of the quick-start-up guide

How to Order the Seatooth® S100-OEM Board & Development Kit

To order a Seatooth® S100 OEM board or Seatooth® S100 OEM Development Kit select the appropriate codes below.

Seatooth® S100 OEM Board Example code: 100 - 232 - 1a
(Seatooth® S100 OEM board with RS232 interface)

