

Linear fittings

Fluorescent fitting

EVN - Zones 2 & 22

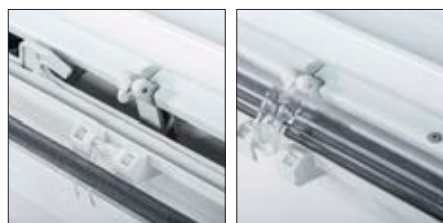


Features

- Double central locking for ingress protection
- All components mounted on hinged and removable gear tray which gives easy access for maintenance
- Including accessories (cable gland, plugs & fixing brackets)
- Option: Automatic switch off on opening for safe maintenance

Specifications

- Main body constructed of glass reinforced polyester for high impact strength
- UV protected polycarbonate diffuser to resist harsh environments
- Rated voltage 110- 260Vac/Vdc 50-60Hz
- Wiring configuration: 5 wires
- 3xEntries M20
- 2x Emergency versions (Type: "EM" version 3h battery duration or "EMA" with 3h with automatic test and blackstart capabilities)



Certifications



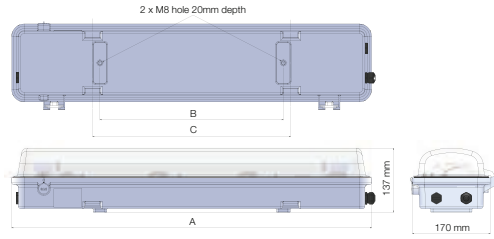
Standards

Approved to:	EN60079-0, 60079-15, 60079-31
EC Type examination certificate to:	Directive 94/9/EC Ex II 3 G Ex nR IIC T4 Gc for -40°C to + 60°C Ex nR IIC T5 Gc for -40°C to + 35°C Ex II 3 D Ex tc IIIC T135°C Dc IP66 for -40°C to + 60°C Ex tc IIIC T100°C Dc IP66 for -40°C to + 35°C
Glow wire test:	960°C EN60598-2-22
Ambient temperature range:	-20°C to +55°C EVN, -10°C to +50°C EVN EM & EVN EMA
IP test:	IP66 IEC 60529 (2001)
Impact protection index:	IK09 according to IEC 62262

Linear fittings

Fluorescent fitting

EVN - Zones 2 & 22



Dimensional drawing

3

EVN

Technical specifications

Type	Wiring Configuration	Light Rating W	Current A 230V	External dimensions mm			Weight kg
				A	B	C	



5 wires: Equipped with 1 cable gland & 2 plugs

EVN120-0000	5 wires	1 x 18	0.09	785	432	400	4.40
EVN140-0000	5 wires	1 x 36	0.17	1370	900	700	7.60
EVN165-0000	5 wires	1 x 58	0.26	1670	900	700	9.20
EVN220-0000	5 wires	2 x 18	0.17	785	432	400	4.40
EVN240-0000	5 wires	2 x 36	0.33	1370	900	700	7.60
EVN265-0000	5 wires	2 x 58	0.50	1670	900	700	9.20
EVN120-D000	5 wires & continuity plate	1 x 18	0.09	785	432	400	4.40
EVN140-D000	5 wires & continuity plate	1 x 36	0.17	1370	900	700	7.60
EVN165-D000	5 wires & continuity plate	1 x 58	0.26	1670	900	700	9.20
EVN220-D000	5 wires & continuity plate	2 x 18	0.17	785	432	400	4.40
EVN240-D000	5 wires & continuity plate	2 x 36	0.33	1370	900	700	7.60
EVN265-D000	5 wires & continuity plate	2 x 58	0.50	1670	900	700	9.20



5 wires through: Equipped with 2 cable glands & 1 plug

EVN120-B000	5 wires through	1 x 18	0.09	785	432	400	4.40
EVN140-B000	5 wires through	1 x 36	0.17	1370	900	700	7.60
EVN165-B000	5 wires through	1 x 58	0.26	1670	900	700	9.20
EVN220-B000	5 wires through	2 x 18	0.17	785	432	400	4.40
EVN240-B000	5 wires through	2 x 36	0.33	1370	900	700	7.60
EVN265-B000	5 wires through	2 x 58	0.50	1670	900	700	9.20
EVN120-E000	5 wires through & 2 continuity plates	1 x 18	0.09	785	432	400	4.40
EVN140-E000	5 wires through & 2 continuity plates	1 x 36	0.17	1370	900	700	7.60
EVN165-E000	5 wires through & 2 continuity plates	1 x 58	0.26	1670	900	700	9.20
EVN220-E000	5 wires through & 2 continuity plates	2 x 18	0.17	785	432	400	4.40
EVN240-E000	5 wires through & 2 continuity plates	2 x 36	0.33	1370	900	700	7.60
EVN265-E000	5 wires through & 2 continuity plates	2 x 58	0.50	1670	900	700	9.20

Technical information

Lamps

Fluorescent Lamp (order separately)
T8 bi-pin tube, lampholder G13, diameter 26mm - white industry 4000°K.

Photometric curve

See page 6/10

Rated voltages

Electronic ballast: 110- 260Vac/Vdc
50-60Hz.

Power factor

0.98.

Terminal block (screws)

6mm²(rigid wire), 4mm² (flexible wire)
Terminals supplied L1, L2, L3, N, PE (looping possible with one additional cable gland)

Cable entries

Three entries M20

For non- armoured cable: included two M20 nylon plugs (EX-M20) and one M20 nylon cable gland, diameter 6-12mm (EXCGM20S)

For armoured cable: included continuity plate - two M20 nylon plugs (EX-M20) and one M20 nickel plated brass cable gland, diameter 6-12/ 8.5-16mm (EXN04MMC1)

Housing

Fiberglass reinforced polyester housing for high impact strength, UV protected polycarbonate diffuser to resist harsh environments, Painted steel gear tray & Stainless steel 316L insert

Fixing (included)

V015 - 2x Two zinc-plated steel brackets for ceiling mounting

Linear fittings

Emergency fluorescent fitting - 3h

EVN EM - Zones 2 & 22

Technical specifications

Type	Wiring Configuration	Light Rating W	Battery h	Current A 230V	External dimensions mm			Weight kg
					A	B	C	
3 wires: Equipped with 1 cable gland & 2 plugs								
EVN120EM-0000	3 wires	1 x 18	3h	0.09	785	432	400	5.80
EVN140EM-0000	3 wires	1 x 36	3h	0.17	1370	900	700	9.00
EVN165EM-0000	3 wires	1 x 58	3h	0.26	1670	900	700	10.60
EVN220EM-0000	3 wires	2 x 18	3h	0.17	785	432	400	5.80
EVN240EM-0000	3 wires	2 x 36	3h	0.33	1370	900	700	9.00
EVN265EM-0000	3 wires	2 x 58	3h	0.50	1670	900	700	10.60
EVN120EM-D000	3 wires & continuity plate	1 x 18	3h	0.09	785	432	400	5.80
EVN140EM-D000	3 wires & continuity plate	1 x 36	3h	0.17	1370	900	700	9.00
EVN165EM-D000	3 wires & continuity plate	1 x 58	3h	0.26	1670	900	700	10.60
EVN220EM-D000	3 wires & continuity plate	2 x 18	3h	0.17	785	432	400	5.80
EVN240EM-D000	3 wires & continuity plate	2 x 36	3h	0.33	1370	900	700	9.00
EVN265EM-D000	3 wires & continuity plate	2 x 58	3h	0.50	1670	900	700	10.60

* For dimensional drawing please refer to page 3/16

Electrical Features

Lamps

Fluorescent Lamp (order separately)
T8 bi-pin tube, lampholder G13, diameter
26mm - white industry 4000*K

Rated voltages

Electronic ballast: 220-240 Vac/Vdc 50/60Hz

Power factor

0.98.

Battery

Battery NiCd 7,2V
Lumen output in emergency mode (1 lamp lit)
2 hours: 40% for EVN120, EVN220, 33% for
EVN140, EVN240, 10% for EVN165, EVN265
3 hours: 24% for EVN120, EVN220, 18% for
EVN140, EVN240, 8% for EVN165, EVN265
Monitored by one LED

Terminal block

Terminal block (screws plug in terminal block)
4mm²(rigid wire), 2,5mm² (flexible wire)
Terminals supplied L1, L2, L3, LS, N, PE
(looping possible with one additional cable
gland)

Cable entries

Three entries M20
For non- armoured cable: included two
M20 nylon plugs (EX-M20) and one M20 nylon
cable gland, diameter 6-12mm (EXCGM20S)
For armoured cable: included continuity
plate - two M20 nylon plugs (EX-M20) and one
M20 nickel plated brass cable gland, diameter
6-12/ 8,5-16mm (EXN04MMC1)

Housing

Fiberglass reinforced polyester housing for
high impact strength, UV protected polycar-
bonate diffuser to resist harsh environments
Stainless steel 316L insert
Painted steel geartray

Fixing

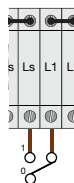
V015 - 2x Two zinc-plated steel brackets for
ceiling mounting

Emergency function diagrams

Wiring provided by DTS - Maintained Mode



Switch between LS/L1 - Non Maintained Mode *



Mains Supply	Tube	Battery
ON	Lit	Charged
OFF	Only emergency tube lit	Discharged

Mains Supply	Tube	Battery
ON	OFF	Charged
OFF	Only emergency tube lit	Discharged

* This table corresponds to the position 0 "open".
If the switch is on position 1 "close", refer to the table on the left

Linear fittings

Emergency Fluorescent fitting with automatic test & blackstart capabilities - 3h. EVN EMA - Zones 2 & 22

Technical specifications

Type	Wiring Configuration	Light Rating W	Battery h	Nominal Current A	External dimensions mm			Weight kg
					A	B	C	
5 wires: Equipped with 1 cable gland & 2 plugs								
EVN120EMA-0000	5 wires	1 x 18	3h	0.09	785	432	400	5.80
EVN140EMA-0000	5 wires	1 x 36	3h	0.17	1370	900	700	9.00
EVN220EMA-0000	5 wires	2 x 18	3h	0.17	785	432	400	5.80
EVN240EMA-0000	5 wires	2 x 36	3h	0.33	1370	900	700	9.00
EVN120EMA-D000	5 wires & continuity plate	1 x 18	3h	0.09	785	432	400	5.80
EVN140EMA-D000	5 wires & continuity plate	1 x 36	3h	0.17	1370	900	700	9.00
EVN220EMA-D000	5 wires & continuity plate	2 x 18	3h	0.17	785	432	400	5.80
EVN240EMA-D000	5 wires & continuity plate	2 x 36	3h	0.33	1370	900	700	9.00

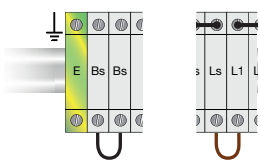
* For dimensional drawing please refer to page 3/16

Electrical Features

Lamp Fluorescent Lamp (order separately) T8 bi-pin tube, lampholder G13, diameter 26mm - white industry 4000°K	Power factor 0.98.	Cable entries Three entries M20 For non- armoured cable: included two M20 nylon plugs (EX-M20) and one M20 nylon cable gland, diameter 6-12mm (EXCGM20S) For armoured cable: included continuity plate - two M20 nylon plugs (EX-M20) and one M20 nickel plated brass cable gland, diameter 6-12/ 8,5-16mm (EXN04MMC1)	Fixing (included) V015 - 2x Two zinc-plated steel brackets for ceiling mounting
Rated voltages Electronic ballast: 220-240Vac/Vdc 50/60Hz	Battery Battery NiCd 6V 4Ah for EVN120, EVN220 Battery NiCd 6V 7Ah for EVN140, EVN240 Lumen output in emergency mode (1 lamp lit) 3 hours: 40% for EVN120, EVN220 3 hours: 33% for EVN140, EVN240 Monitored by two LED	Housing Fiberglass reinforced polyester housing for high impact strength, UV protected polycarbonate diffuser to resist harsh environments, 2 x M8 Stainless steel 316L insert Painted steel geartray	
	Terminal block (spring) Jumped bar x2 terminal blocks 4mm ² (rigid wire), 2,5mm ² (flexible wire) Terminals supplied L1, L2, L3, LS, N, E, BS (looping possible with one additional cable gland)		

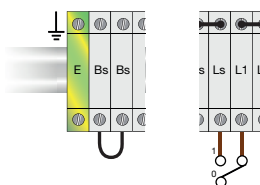
Emergency function diagrams

Wiring provided by DTS - Maintained Mode



Mains Supply	Tube	Battery
ON	Lit	Charged
OFF	Only emergency tube lit	Discharged

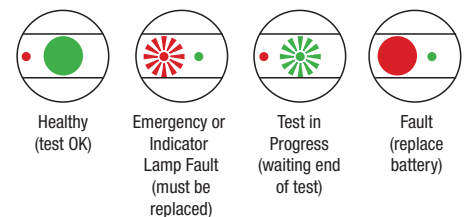
Switch between LS/L1 - Non Maintained Mode



Mains Supply	Tube	Battery
ON	OFF	Charged
OFF	Only emergency tube lit	Discharged

Preventive maintenance mode

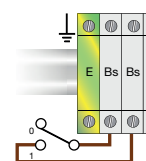
Battery charge - daily
 Emergency lamp during 1min - weekly
 Battery charge capacity during 1hr - quarterly
 Clear system test display
 Battery charge monitored by 2 LED



Emergency function diagram - Blackstart mode

The EMA product contains 2 blackstart terminals. The **blackstart mode** consists in disconnecting the battery and so switching off the fitting. This mode is mainly used during maintenance. As soon as the maintenance is done, the main power ON and the blackstart terminals connected, the emergency fitting is ready to be used as the battery is not discharged.

Switch between BS terminals



This table corresponds to the position 0 "open".
 If the switch is on position 1 "close", please refer to the above tables.

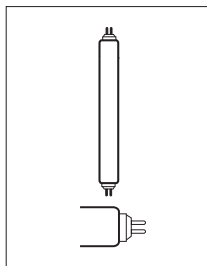
Mains supply	Tube	Battery
ON	Lit	Disconnected - not charged
OFF	OFF	Disconnected - not charged

Linear fittings

Accessories

EVN - Zones 2 & 22

Lamps



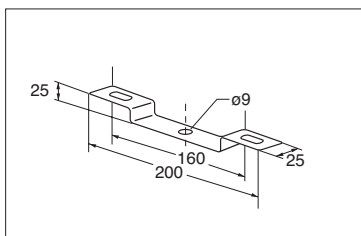
Bi-pin T8 fluorescent lamps

Specifications:

G13 - \varnothing 26mm
 Colour temperature: White industry 4000°K
 CRI: > 80
 lm/W: 65 to 93
 Average operating life: 12,000 hours

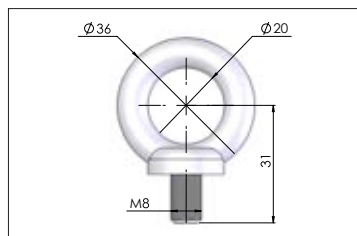
Type	Power W	Lumen output lm	Lampholder
TL18W	18	1250	G13
TL36W	36	3350	G13
TL58W	58	5200	G13

Fixing Accessories



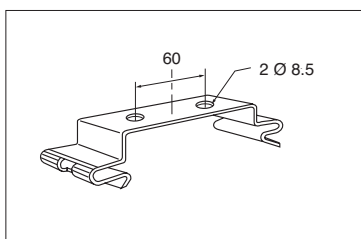
Brackets

Type	Specifications
V015	2 x pair of zinc plated steel for ceiling mounting (Included with product)
V016	2 x stainless steel 316L brackets for ceiling mounting



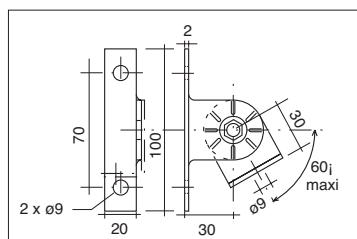
Hook

Type	Specifications
V024	2x Zinc plated steel ceiling suspension hook



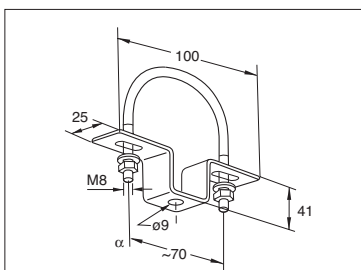
Mounting bracket clip

Type	Specifications
V014	2x Rapid ceiling mounting with stainless steel clip



Hinged bracket

Type	Specifications
V023	2x Steel hinged brackets plastic coated



Fixing bracket and flange

Type	Specifications
V018	2x zinc plated steel pole mounted brackets for $\varnothing 1\frac{1}{4}$ & $1\frac{1}{2}$
V019	2x zinc plated steel pole mounted brackets for $\varnothing 2"$
V021	2x Stainless steel 316L pole mounted brackets for $\varnothing 1\frac{1}{4}$ & $1\frac{1}{2}$
V022	2x Stainless steel 316L pole mounted brackets $\varnothing 2"$

Linear fittings

Spare parts

EVN - Zones 2 & 22

3



Spare parts

Type	Specifications
V00120W	20W diffuser with gasket for EV. range
V00140W	40W diffuser with gasket for EV. range
V00165W	65W diffuser with gasket for EV. range
V0041X20WE	Gear tray 1X18W with electronic ballast 110-260V 50-60Hz for EVN120
V0041X40WE	Gear tray 1X36W with electronic ballast 110-260V 50-60Hz for EVN140
V0041X65WE	Gear tray 1X58W with electronic ballast 110-260V 50-60Hz for EVN165
V0042X20WE	Gear tray 2X18W with electronic ballast 110-260V 50-60Hz for EVN220
V0042X40WE	Gear tray 2x36W with electronic ballast 220- 240V 50-60Hz for EVN240
V0042X65WE	Gear tray 2x58W with electronic ballast 220- 240V 50-60Hz for EVN265
V0041X20WEM	Emergency gear tray 1x18W with electronic ballast 220-240V 50-60Hz for EVN120EM
V0041X40WEM	Emergency gear tray 1x36W with electronic ballast 220-240V 50-60Hz for EVN140EM
V0041X65WEM	Emergency gear tray 1x58W with electronic ballast 220-240V 50-60Hz for EVN165EM
V0042X20WEM	Emergency gear tray 2x18W with electronic ballast 220-240V 50-60Hz for EVN220EM
V0042X40WEM	Emergency gear tray 2x36W with electronic ballast 220-240V 50-60Hz for EVN240EM
V0042X65WEM	Emergency gear tray 2x58W with electronic ballast 220-240V 50-60Hz for EVN265EM
V0041X20WEMA	Emergency gear tray + auto test 1X18W with electronic ballast 220-240V 50-60Hz for EVN120EMA
V0041X40WEMA	Emergency gear tray + auto test 1X36W with electronic ballast 220-240V 50-60Hz for EVN140EMA
V0042X20WEMA	Emergency gear tray + auto test 2X18W with electronic ballast 220-240V 50-60Hz for EVN220EMA
V0042X40WEMA	Emergency gear tray + auto test 2X36W with electronic ballast 220-240V 50-60Hz for EVN240EMA
V008N	Bi-pin G13 lampholder
V02520x40W	Brass continuity plate for EV. 120, EV. 220, EV. 140, EV. 240
V02565W	Brass continuity plate for EV. 165, EV. 265
EXCGM20S-01	Kit M20 Exe IIC nylon cable gland for non armoured cable diameter 6-12,0 and locknut
EXN04MMC1-01	Kit M20 Ex-d IIC Ex-e II Ex-t-d double compression nickel plated cable gland for armoured cable diameter inner 6-12 outer 8,5-16, locknut, sealing gasket