

Machine Layout



New features

■ LCD Back light

■ 11 Localized Languages

English/German/French/
Netherlands/Italian/Spanish/
Portuguese/Danish/Swedish/
Norwegian/Finish/

■ Rubber Grip& Rubber protector

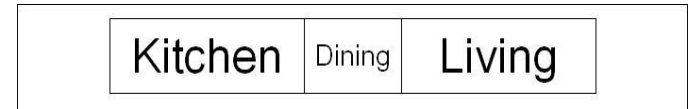
For better grip and protection

■ New symbols (for AV)



■ New label type for patch panel

Adjust each individual block length to fit different sizes of patch panel



■ Label length setting by 0.1mm

Now you can select smallest of
tape length increments.

■ Rechargeable Battery and AC adapter included

*Rechargeable battery is
available only for PT-7600



New features

After feedback of the current model, customer useable functions added.

■ LCD Back light

Can be used in dark environments!



■ Rechargeable Battery

Safer for environment
Various power options increase the usability!



■ New template (Panel 2)

The size of each individual block is easily adjustable!



Other Features

■ Various tapes

Applicable 6mm to 24mm tape
Total more than 120 kinds

■ Large LCD Display

For easier viewing and editing of text

■ Separated number key

For quick input of numbers

■ Transfer function


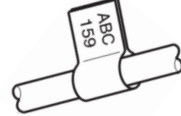



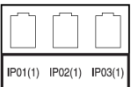

- *10 label layouts
- *1 Database
- *Symbols

■ Data Back-up to your computer and new firmware update function

■ Carrying case included



■ Various printing method

Rotate	
Flag	
Port	<div style="display: flex; justify-content: space-around; align-items: center;"> <div style="text-align: center;"> <p>20</p>  <p>8A-D20</p> </div> <div style="text-align: center;"> <p>21</p>  <p>8A-D21</p> </div> <div style="text-align: center;"> <p>22</p>  <p>8A-D22</p> </div> </div>
Panel	<div style="display: flex; justify-content: space-around; align-items: center;"> <div style="text-align: center;">  <p>IP01(1) IP02(1) IP03(1)</p> </div> <div style="text-align: center;">  <p>IP03(1) IP02(1) IP01(1)</p> </div> </div>

■ 10 Memory Locations

■ Barcode Printing EAN, Code39...

Tape Types

- Standard laminated tapes.
- Strong adhesive tapes.
- Tamper evident tapes.
- Iron on fabric tapes (Non-laminated).
- Fluorescent tapes.
- Matt silver tapes.
- Flexible identification tapes.





**Fade
Resistant**



**Chemical
Resistant**



**Strong
Adhesion**

P-touch LABELS
TESTED
TO THE EXTREME ✓



**Temperature
Resistant**

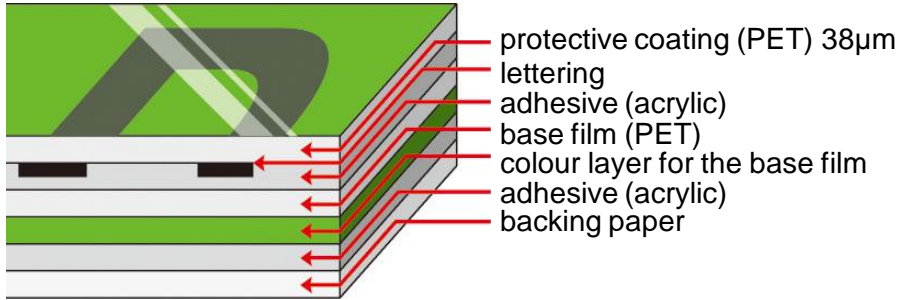


**Abrasion
Resistant**



**Water
Resistant**

Tape durability



Brother P-touch laminated TZ tapes consist of six layers of materials, resulting in a thin, extremely strong label.

The label can withstand heavy abrasion, extreme temperature, chemicals, sun-light etc.

Abrasion Test



Water and Chemical Submersion Test

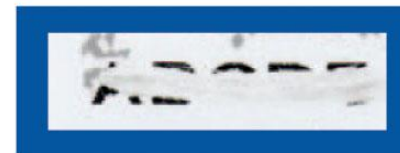


■ Labels after Chemical abrasion testing

Test: Chemical Abrasion **Chemical:** Acetone



Brother P-touch
Laminated Label



Non-Laminated
Competitor Label

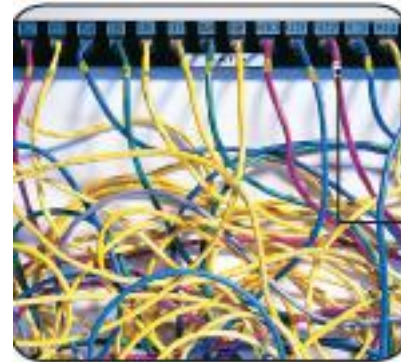
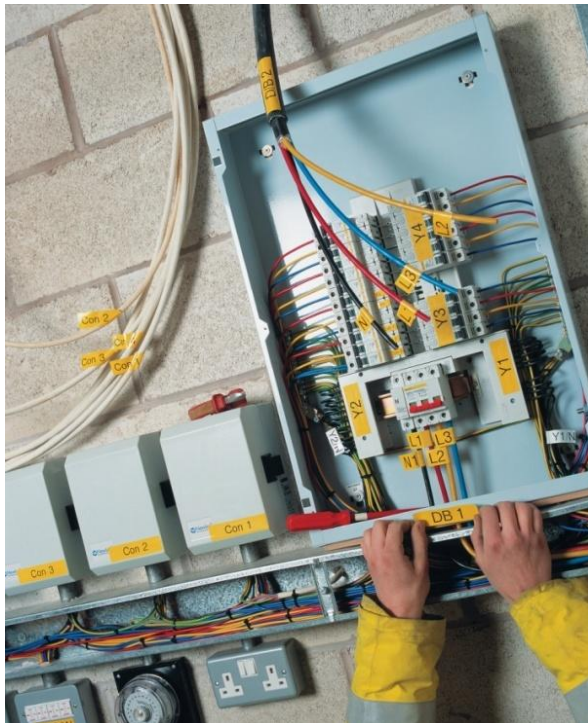
Application Examples



Asset Management



PC Server



LAN Hub



Wall Plates



Switch Board



Cable

MAIN

Users

- Mechanical, Electrical & Plumbing Contractors (MEP)
- Networking & Telecom companies
- IT & maintenance departments
- Telephone system installers
- Asset management
- Warehouse / Factory floor

You can approach almost any organization including:

- Telecommunication
- Banks
- Hospitals
- Army & Defense
- Government
- Airlines & Airports
- Energy sector including petroleum companies
- Water and Electricity municipalities
- Who else can you think of ?

How to Create Professional Labels (Label Type Modes)

➤ Normal

PT-7600

➤ Vertical

HIGH VOLTAGE

➤ Rotate

➤ Rotate & Repeat

2A-C14
2A-C14
2A-C14
2A-C14
2A-C14
2A-C14

V
E
R
T
I
C
A
L

➤ Port

8A-19

8A-20

8A-21

➤ Panel 1

8A-19 8A-20 8A-21 8A-22

➤ Panel 2

8A-19 8A-20 8A-21

➤ Flag

ABC
159

.....

ABC
159

ABC
159

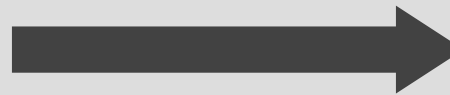
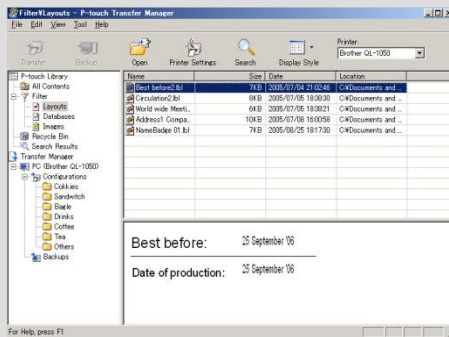
.....

ABC
159

Using Transfer manager

Transfer Manager 2.0

iTunes style user interface



Transfer:
Label layout
Image, Database



Print PC edit
template at any
site!

Thank You

F-touch