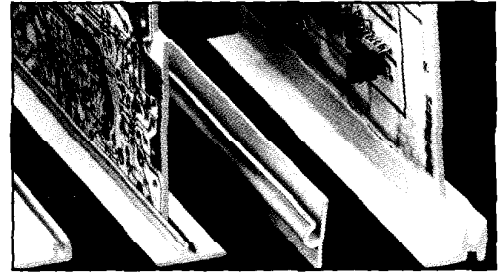


# CARD GUIDES AND PULLERS

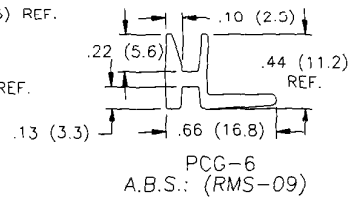
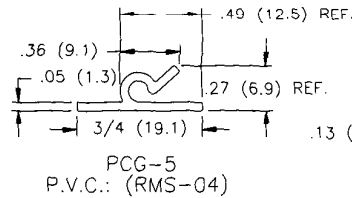
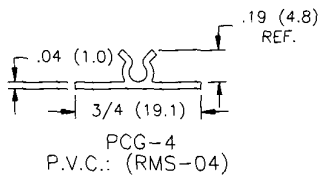
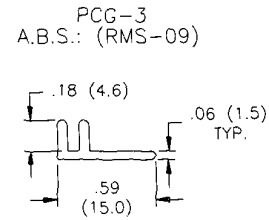
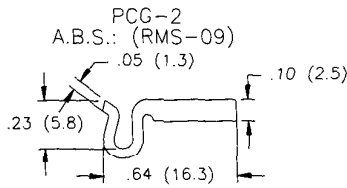
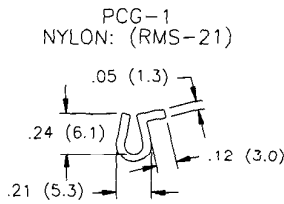
## PRINTED CIRCUIT GUIDE (PCG)

- Six profiles offer precision alignment of circuit boards 1/16" (1.6mm) thick
- PCG-3, -4 and -5 available with adhesive base, RMS-15; 1/16" (1.6mm) thick; to order, add suffix "A" as in example: PCG-4A
- Custom profiles available by special order
- **Material:** See below
- Color: Gray
- Supplied in 4' (121.9cm) lengths, 25 per bundle; custom cut lengths and/or drilling available by special order

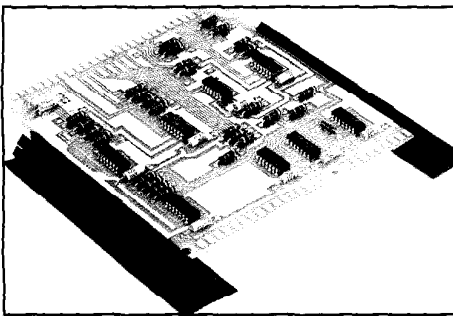


### PCG

NOTE: Gap accepts a 1/16 (1.6) thick board on all parts

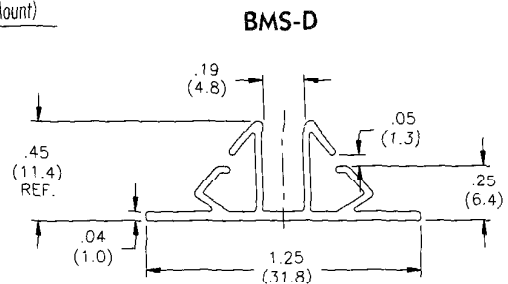
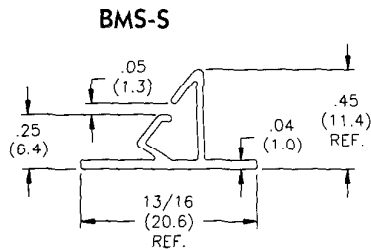


## BOARD MOUNTING STRIP (BMS)



- Horizontal mount for boards of any length or width
- Mount to any surface
- Can be cut to any size; sold in 4' (121.9cm) lengths, 25 per bundle or cut to customer specifications by special order
- Single or Double style, parts are dimensionally equivalent
- Available with adhesive back, 1/16" (1.6mm) thick, RMS-15
- **Material:** PVC, RMS-04
- Color: Black

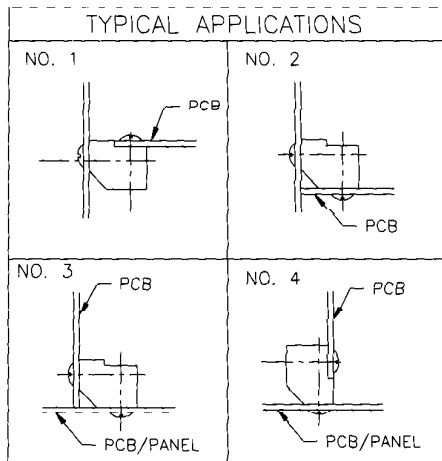
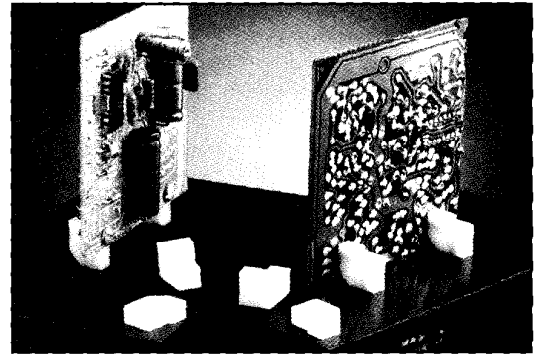
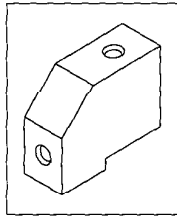
Part #	Without adhesive	With adhesive
BMS-S (Single Mount)		BMS-S-A (Single Mount)
BMS-D (Dual Mount)		BMS-D-A (Dual Mount)



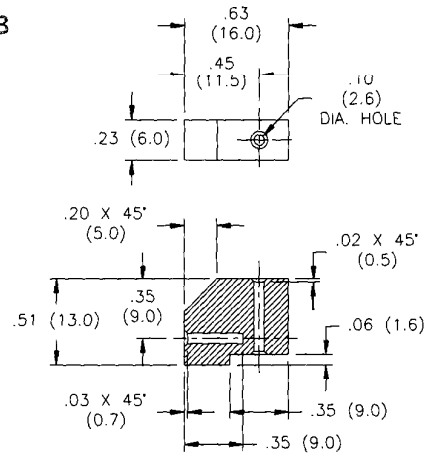
# CARD GUIDES AND PULLERS

## PRINTED CIRCUIT BOARD MOUNTING BLOCK (PCB-MB)

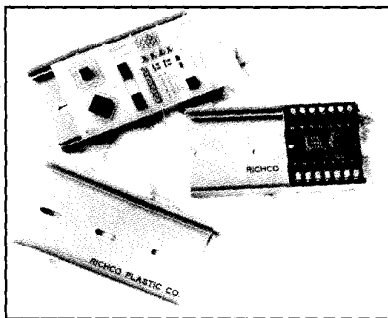
- Mounts PC boards to chassis or to other PC boards
- Different mounting modes available to fit specific board needs
- Mounts with a #4 (Type B) (M3) self tapping screw
- **Material:** Nylon 6/6, RMS-01; Flame Retardant Nylon, RMS-19 available by special order
- Color: Natural
- Standard Pack: 1000 per bag



PCB-MB

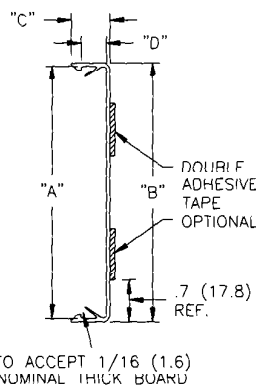
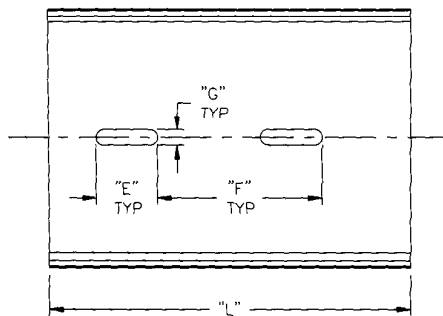


## PRINTED CIRCUIT BOARD TRACK (PCT/PCTE)



PCT/PCTE

- Non-conductive and rigid
- Mount custom or standard circuit boards
- Affix to panel with screw or rivet or tape
- **PCT-Track** accepts a 3.00" (76.2mm) wide X 1/16" (1.6mm) thick printed circuit board
- **PCTE-Eurocard** design now accommodates standard Eurocard; 100mm x 160mm x 1.6mm
- Available with slots or two strips of double adhesive tape. Please specify with suffix "S" (slots) or "T" (tape) when ordering
- Double back adhesive: RMS-15
- Other sizes available by special order
- **Material:** Rigid PVC
- Color: Gray
- Standard pack: 25/pack



Custom lengths available by special order

PART NO.	DESCRIPTION	"A" (BOARD WIDTH)	"B"	"C"	"D"	"E" ±1/16 (±1.6)	"F" ±1/16 (±1.6)	"G" ±1/16 (±1.6)	"L"
PCTE-100-1-04S	WITH SLOTS, NO TAPE	3.94 (100)	4.10 (104)	.67 (17)	.43 (10.9)	.79 (20.0)	1.77 (45.0)	.20 (5.0)	6.3 REF (160 REF)
PCTE-100-1-04T	WITH TAPE, NO SLOTS	3.00 (76.2)	3.14 (79.8)	.70 (17.8)	.43 (10.9)	3/4 (19.1)	2.00 (50.8)	3/16 (4.8)	48.0±1/4 (1219±6.4)