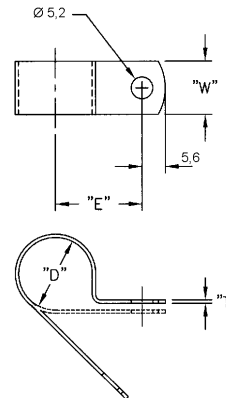


Part No.	"D" Ø mm	"E" mm	"T" mm	"W" mm	Std.Pk.
AL2	3.2	11.7	0.8	9.5	1.000
AL3	4.8	12.7			
AL4	6.4	13.5			
AL5	7.9	14.2			
AL6	9.5	15.0			
AL7	11.1	15.7			
AL8	12.7	16.5			
AL9	14.3	19.1			
AL10	15.9	19.8			
AL11	17.5	20.6			
AL12	19.1	21.3			
AL14	22.2	22.9			
AL15	23.8	23.6			
AL16	25.4	24.4			
AL18	28.6	26.7			
AL20	31.8	28.2			



## AL

ALUMINIUM CABLE CLAMPS



Material: Aluminium  
Std. Pk.: see table

Note:

AL	18
Part	Type