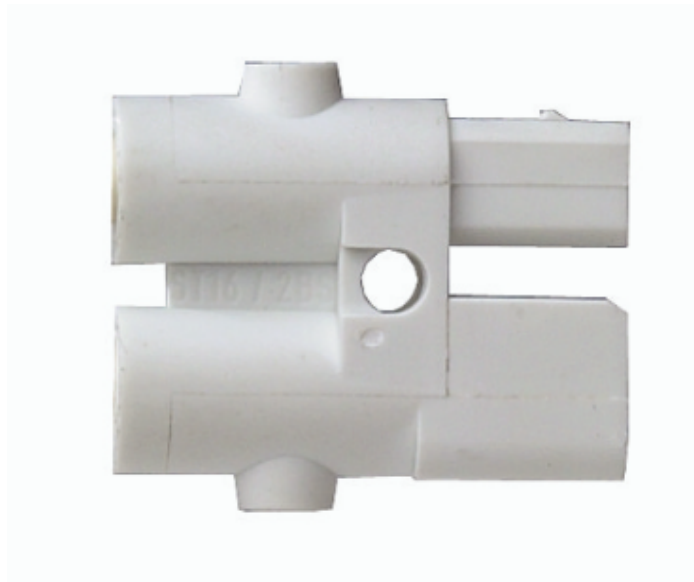


Datasheet

Art.No. 93.016.0053.0

Connector ST16/2 BS WS

Connector ST16, 2 pole, screw connection, 48V/25A, color white



Art.No.	93.016.0053.0
EAN	4015573357402
Order unit	1 pieces

Approvals



Technical data

General

Rated current	25 A
Rated voltage	48 V
Strain relief	Yes
Pollution degree	2
Mechanical coding	Yes
Interlockable	Yes
Color of coding/ contact carrier	White

Connection Data

Connection cross section stranded max.	2.5 mm ²
Cross section stranded 2	0.5 mm ²
Terminations per pole	1

Model

Model	Hermaphroditic
Number of poles	2
Connection type	Screw connection
Degree of protection (IP)	IP20

Material

Housing material	Polyamide
Halogen free	Yes
Contact material	CuZn

Insulation components continuous temperature	100 °C
Surface finish	Silver-plated

Dimensions

Length	24 mm
Width	8 mm
Height	21 mm

Classification

ECLASS 8.1	27440605: Plug-in connector for plug-in building installation
ETIM 5.0	EC002560: Plug-in connector for plug-in building installation
ETIM 4.0	EC002560: Plug-in connector for plug-in building installation

Drawings

