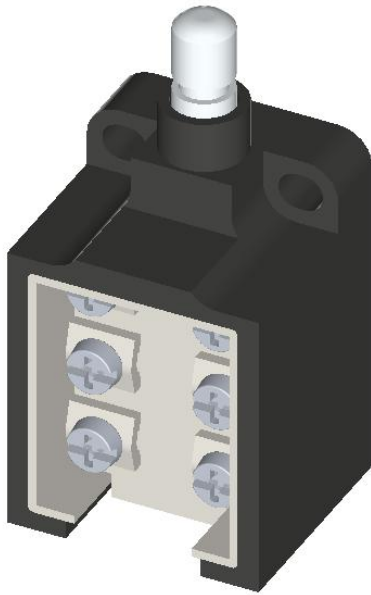


SIEMENS

Product data sheet

3SE5250-0LC05



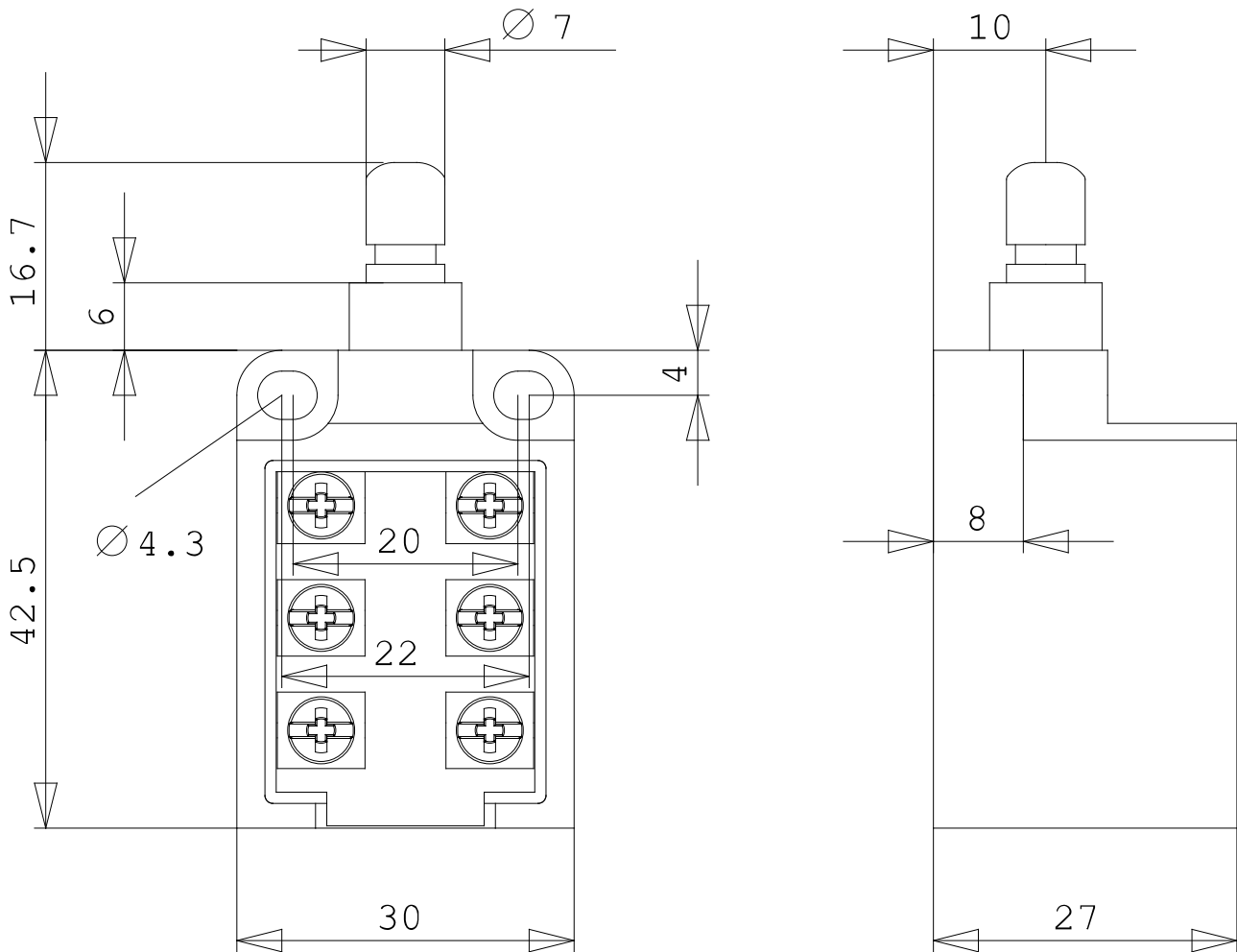
SIRIUS POSITION SWITCH;
 PLASTIC HOUSING NOT ENCAPSULATED 30MM
 1NO/2NC SNAP-ACTION CONTACTS TEFLON
 PLUNGER

General technical details:

| | |
|--------------------------|--------------------------|
| Product designation | standard position switch |
| Insulation voltage | |
| • rated value | 400 V |
| Degree of pollution | class 3 |
| Thermal current | 6 A |
| Operating current | |
| • at AC-15 | |
| • at 24 V / rated value | 6 A |
| • at 125 V / rated value | 6 A |
| • at 230 V / rated value | 1.5 A |
| • at DC-13 | |
| • at 24 V / rated value | 3 A |
| • at 125 V / rated value | 0.55 A |
| • at 230 V / rated value | 0.27 A |
| Continuous current | |

| | |
|--|------------------------------------|
| <ul style="list-style-type: none"> • of the slow DIAZED fuse link | 6 A |
| <ul style="list-style-type: none"> • of the quick DIAZED fuse link | 10 A |
| <ul style="list-style-type: none"> • of the C characteristic circuit breaker | 1 A |
| Mechanical operating cycles as operating time | |
| <ul style="list-style-type: none"> • typical | 15000000 |
| Electrical operating cycles as operating time / with contactor 3RH11, 3RT1016, 3RT1017, 3RT1024, 3RT1025, 3RT1026 | |
| <ul style="list-style-type: none"> • typical | 1000000 |
| Electrical operating cycles as operating time / at AC-15 / at 230 V | |
| <ul style="list-style-type: none"> • typical | 100000 |
| Electrical operating cycles in one hour | |
| <ul style="list-style-type: none"> • with contactor 3RH11, 3RT1016, 3RT1017, 3RT1024, 3RT1025, 3RT1026 | 6000 |
| Repeat accuracy | 0.1 mm |
| Design of the contact element | snap-action contacts |
| Number of NC contacts | |
| <ul style="list-style-type: none"> • for auxiliary contact | 2 |
| Design of the switching function | positive opening |
| Number of NO contacts | |
| <ul style="list-style-type: none"> • for auxiliary contact | 1 |
| Resistance against vibration | 0,35 mm / 5g |
| Resistance against shock | 30g / 11 ms |
| Ambient temperature | |
| <ul style="list-style-type: none"> • during the operating phase <ul style="list-style-type: none"> • minimum • maximum • during storage <ul style="list-style-type: none"> • minimum • maximum | -25 °C 85 °C -40 °C 90 °C |
| Width of the sensor | 30 mm |
| Material | |
| <ul style="list-style-type: none"> • of the housing | plastic, open-type |
| Material / of the housing / of the switch head | plastic |

| | |
|-------------------------------------|----------------------|
| Design of the operating mechanism | teflon plunger |
| Actuating speed | |
| • minimum | 0.1 m/s |
| • maximum | 1.5 m/s |
| Built in orientation | any |
| Design of the electrical connection | screw-type terminals |



last change:

10/31/2006

| | | |
|------------------------------|------------|--|
| Technical Assistance: | Telephone: | +49 (0) 911-895-5900 (8°° - 17°° CET) |
| | Fax: | +49 (0) 911-895-5907 |
| | E-Mail: | technical-assistance@siemens.com |
| | Internet: | www.siemens.de/lowvoltage/technical-assistance |