

Installation guide

Thank you for choosing OMP Global Style.

omp
AMERICAS

200 Norfinch Drive
Toronto, Ontario,
Canada
M3N 1Y4

Tel: 1-416-667-9909
Email: americas@omp-global.com

omp
EUROPE/MIDDLE EAST

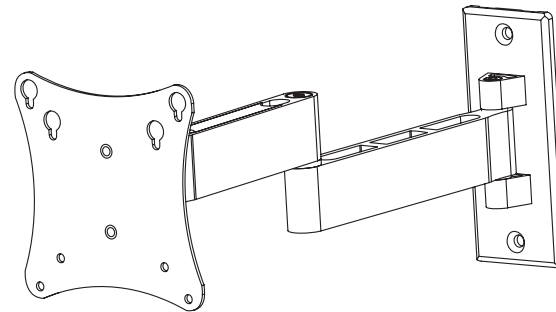
Common Lane
Setchey, Kings Lynn
Norfolk, PE33 0AT
England

Tel: 44-1553-813-300
Email: europe@omp-global.com

omp
ASIA PACIFIC

1D Quadrant Dr,
Gracefield,
Lower Hutt, 5010
New Zealand

Tel: 64-4-586-6677
Email: asiapacific@omp-global.com



MOUNTING INSTALLATION INSTRUCTIONS

Designed for small flat panels (10 - 24") to install to a vertical wall.
Maximum load capacity: 15.8kg (35lbs).

CAUTION:

If you do not understand these instructions, or have doubts about the safety of the installation, please call a qualified installer or contact us. We will provide assistance for any safety issues and resolve any missing component problems. Please check carefully to make sure there are no missing or defective parts. Do not use components with defects, as wrong installation may lead to component damage or serious injury to the user. Do not use this product for any purpose other than the original intended use. The hardware supplied for this product cannot be used on a steel stud wall, old cinder block wall or a hollow wall. If you cannot determine the nature of a wall, please consult a qualified installer. Our company will not be held responsible for damage or loss caused by wrong installation or assembly. Regular cleaning of this product with a clean dry cloth is usually sufficient, but for stubborn marks, wipe over gently with a clean damp cloth. Never use strong detergents or abrasives, as these may damage the surface. There are many small components used in the construction of this unit, these loose items should be kept away from young children whilst assembling your unit. Do not exceed the maximum weight capacity for this product. Your installer is responsible for ensuring the safe installation of this product.

STEP 4

ADJUST TENSION, TILT AND ROLL ANGLES

Adjustment points (socket screws) are factory torqued for optimal performance. For adjustment of tilt and roll, remove snap caps as shown in fig. 5.1. To adjust tilt, tighten or loosen socket screw a few turns using 5mm Allen wrench (E). To adjust roll, tighten or loosen 10-32 lock nut, indicated in fig. 5.2.

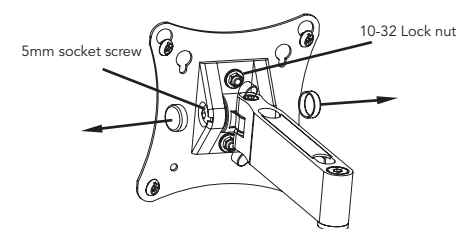


fig 5.1

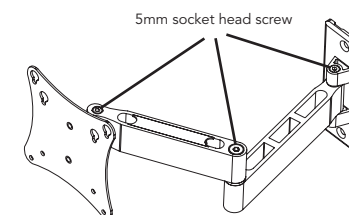


fig. 5.2

STEP 2

SELECT THE CORRECT MOUNTING HARDWARE FOR YOUR TELEVISION

Select the correct mounting screws, either (E) or (F). Optional spacers (H) may be used between mount (A) and monitor. Do not over tighten screws and make sure that screws do not bottom out in the mounting holes.

CAUTION: Always make sure the television is unplugged, before threading any bolt into the back panel! Find the screw holes in the television's back, then select the screws that fit the screw holes.

IMPORTANT: If you cannot find the hardware that fits your television, please contact your local hardware store.

STEP 3

INSTALLATION OF THE TELEVISION

CAUTION: Never lay the television face down on the glass, it should be tilted or leaned against a wall or other solid surface. Laying the television face down on the glass, may lead to permanent damage.

Insert four M4 x 25mm (or 15mm) screws (E or F) into holes on reverse side of screen, leaving approximately 6mm of thread. Hook screws onto keyslots of wall arm assembly (A) as indicated in fig. 4.1 and fig. 4.2.

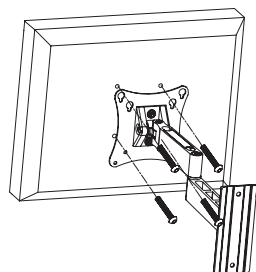


fig. 4.1

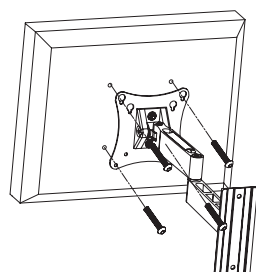
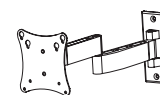


fig. 4.2

COMPONENTS



1x wall arm assembly (A)



2x metal washer (B)



2x lock nut (C)



1x allen wrench (D)



4x M4x25 philips screw (E)



4x M4x15 philips screw (F)



2x 1/4-20x1.5" flat head screw (G)



4x retaining spacer (H)



2x #14x2.5" flat head wood screw (I)



2x wall anchor (J)

fig. 1

CAUTION:

Our company accepts responsibility for the safety of the mount and the television link, but does not accept responsibility for the link between the mount and the wall.

TOOLS REQUIRED:

Drill with 8mm (1/3") and 4mm (5/32") bits, masonry drill bits for concrete installation, level and a Philips screwdriver. The components and the attachments of this product are shown in fig. 1.

STEP 1

INSTALLATION OF THE MOUNT TO THE WALL

Determine the mounting location

To provide maximum viewing flexibility, the M7230 is capable of a wide range of motion, which allows the display to be positioned for viewing from many different angles. When selecting the mounting location for the display, make sure there is adequate space on all sides of the display.

Three installation choices are covered: wood stud, solid concrete and concrete block.

Wood stud installation:

The wall arm assembly (A) must be screwed into a stud in order to safely hold mount and monitor. Using a stud finder, find location of stud in wall. An "edge to edge" stud finder is recommended for this. Using wall arm assembly (A), mark on wall screw holes. Screw holes should be in the centre of the stud. A level will ensure the holes for the mount are vertically straight. Drill two 5/32"(4mm) diameter holes 65mm (2.5") deep. Attach wall arm assembly (A) to wall using two #14 x 2.5" flat head wood screws (I) as shown in fig 2.1.

Solid concrete and concrete block installation:

Please read warning on next page before attempting to install mount on a solid concrete or concrete block wall.

Place mount on wall, using level to ensure wall arm assembly will be straight. For concrete block installations mount in a solid area, at least 25mm (1") from the sides of the block. Mark holes, then drill two 8mm (1/3") diameter holes with minimum depth of 65mm (2.5"). Insert wall anchors (J) in holes flush with wall as shown in fig 3. Place wall arm assembly (A) over wall anchors (J) and secure with wood screws (I) as shown in fig 2.2. Tighten fasteners, making sure the wall arm (A) is level.

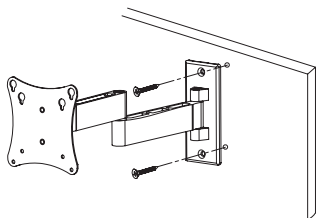


fig. 2.1

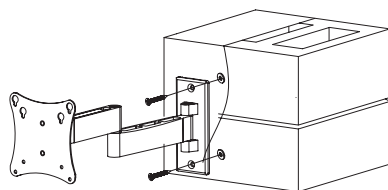


fig. 2.2

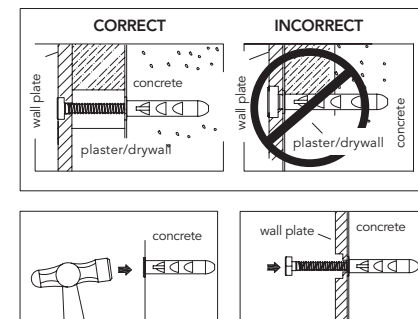


fig. 3

WARNING

When installing the wall mount onto a solid concrete wall, verify that you have a minimum of 35mm (1 3/8") of actual concrete thickness in the hole to be used for the concrete anchors. Be sure to mount in a solid part of the wall. It is suggested that a standard electric drill on a slow setting is used to drill the hole, instead of a hammer drill. The concrete must be 2000PSI minimum density.

The anchors must be seated firmly against the concrete or masonry. If mounting to a masonry wall covered with drywall/plaster, counter bore a hole through the drywall/plaster around the mounting hole location, so that the anchor can be seated directly against concrete or masonry.