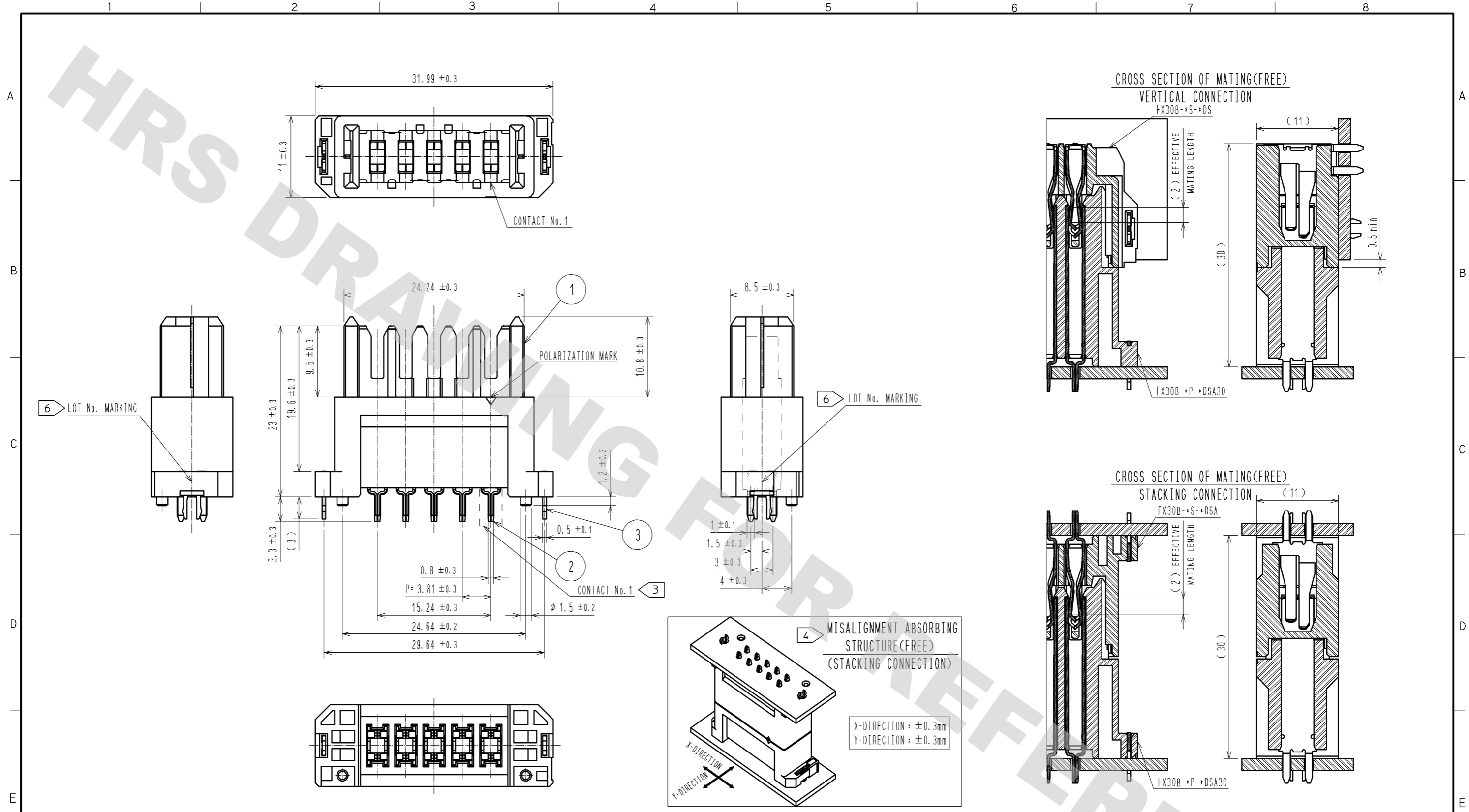


DRAWING FOR REFERENCE: This is subject to change without notice  
12/05/2013

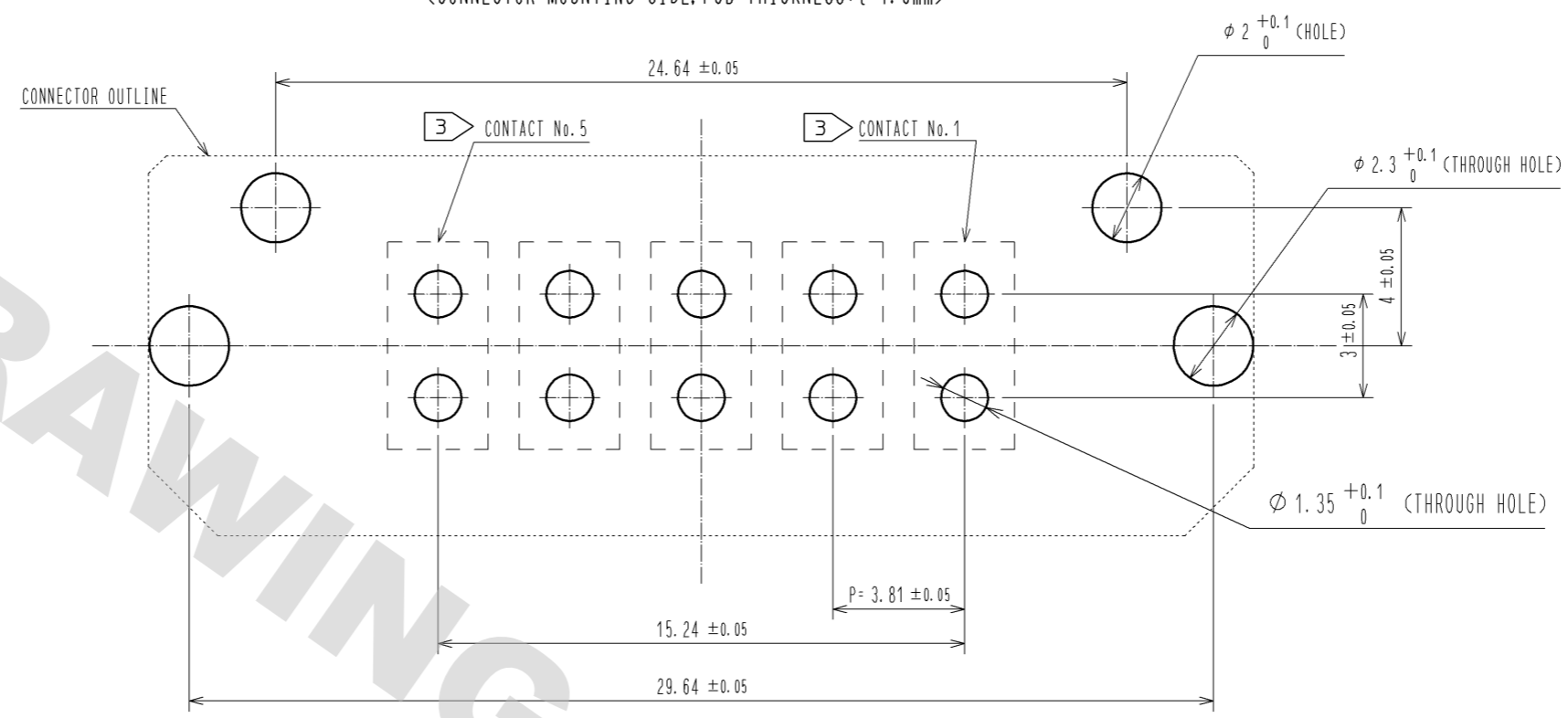


NOTE 1 THIS PRODUCT IS PACKAGED IN TRAY. (35pcs/TRAY)  
 2 BLEMISH AND HIT MARK CAN BE OCCURED THROUGH OUT THE MANUFACTURING PROCESS WHICH DOESN'T AFFECT QUALITY LEVEL. ALSO, BLACK SPOT COULD BE OBSERVED ON THE SURFACE OF HOUSING.  
 3 FOR THE CONTACT NO., ADJACENT TWO PAIRS OF LEADS PLACED BACK-TO-BACK (4 LEADS IN TOTAL) COMPOSE ONE LINE.  
 4 MISALIGNMENT ABSORBING RANGE:  $\pm 0.3\text{mm}$  max.  
 5 THE DIMENSION IN PARENTHESES ARE FOR REFERENCES.  
 6 LOT NO. IS INDICATED AT EITHER ONE OF THE POSITION AS SHOWN.

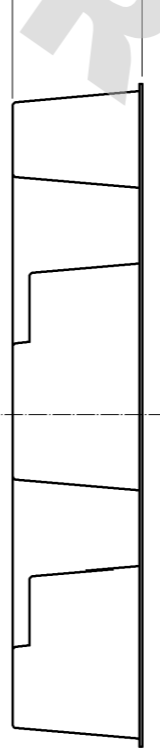
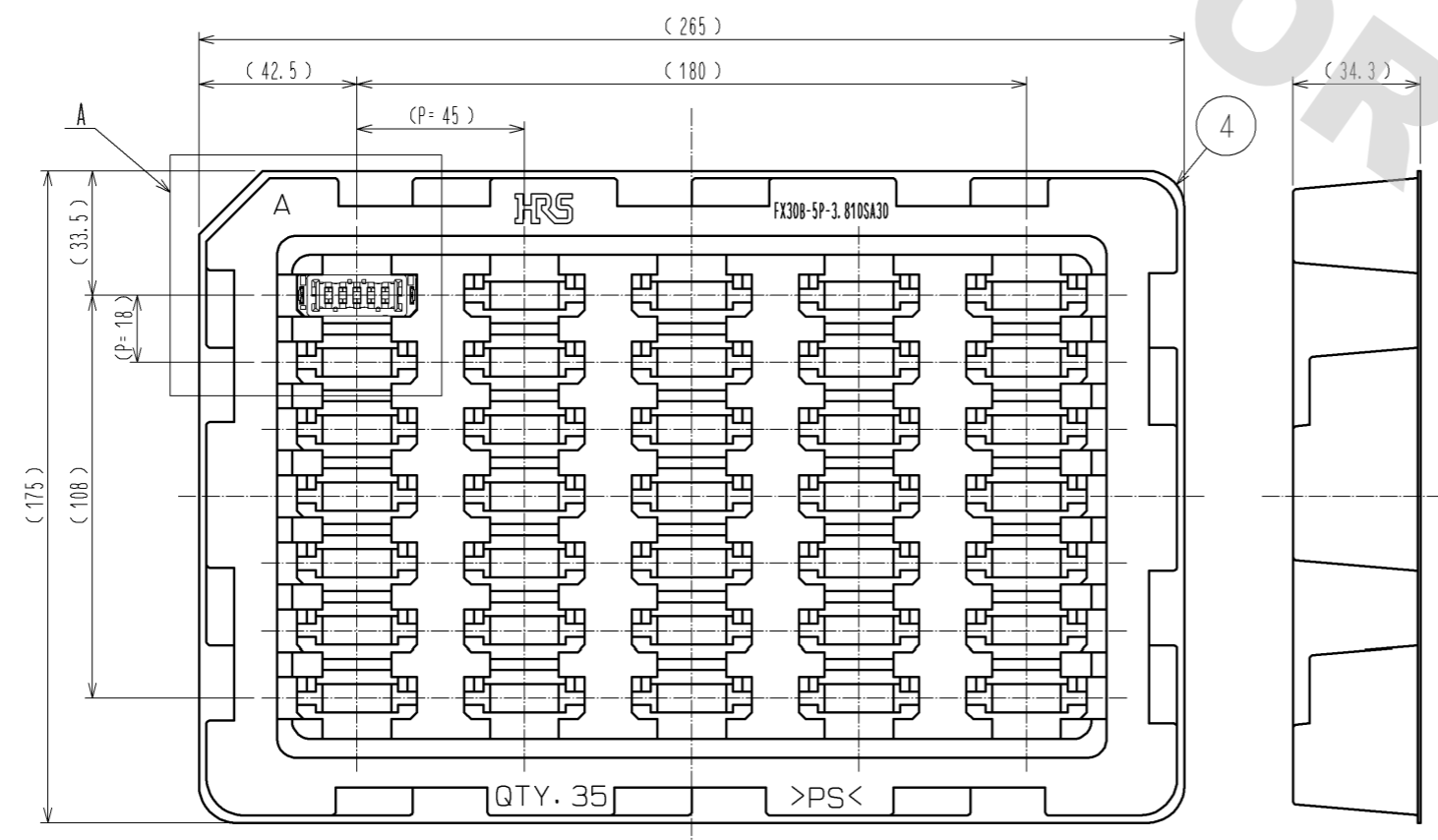
2	COPPER ALLOY	CONTACT AREA: GOLD-PLATING $0.1 \mu\text{m}$	4	POLYSTYRENE			
		LEAD AREA: TIN-PLATING $1.0 \mu\text{m}$					
		UNDER PLATING: NICKEL $1.0 \mu\text{m}$	3	PHOSPHOR BRONZE	TIN-PLATING $3.0 \mu\text{m}$		
1	POLYAMIDE	BLACK UL94V-0			UNDER PLATING: NICKEL $1.0 \mu\text{m}$		
NO.	MATERIAL	FINISH . REMARKS	NO.	MATERIAL	FINISH . REMARKS		
UNITS mm		SCALE 2 : 1	COUNT 	DESCRIPTION OF REVISIONS	DESIGNED	CHECKED	DATE
<b>HRS</b> HIROSE ELECTRIC CO., LTD.		APPROVED : HS. OKAWA	13. 03. 13	DRAWING NO.	EDC3-347267-00		
		CHECED : KI. HIROKAWA	13. 03. 12	PART NO.	FX30B-5P-3. 81DSA30		
		DESIGNED : DK. AIMOTO	13. 03. 11	CODE NO.	CL570-3303-0-00		
		DRAWN : DK. AIMOTO	13. 03. 11				

DRAWING FOR REFERENCE: This is subject to change without notice  
12/05/2013

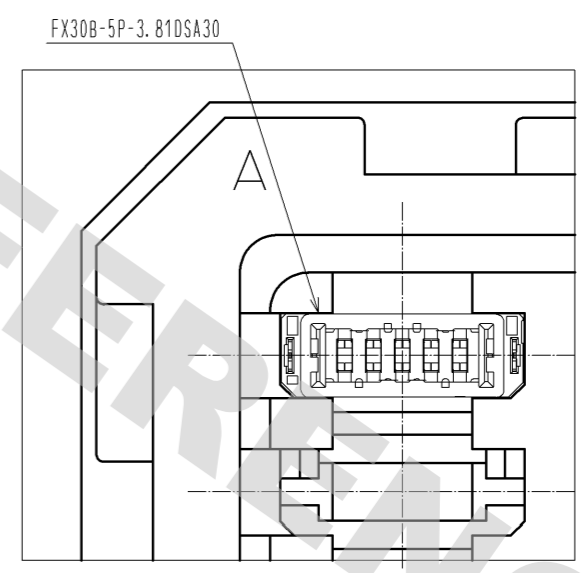
RECOMMENDED HOLE PATTERN DIMENSION OF PCB(5:1)  
(CONNECTOR MOUNTING SIDE, PCB THICKNESS: t=1.6mm)



1 DRAWING FOR PACKAGING(1:2)



A(1:1)



<b>HRS</b>	DRAWING NO.	EDC3-347267-00	△ 2/2
	PART NO.	FX30B-5P-3.81DSA30	
	CODE NO.	CL570-3303-0-00	
	NO.		