

MSTB 2,5/...-G

Open-end header,
plug-in direction **parallel** to the p.c.b.

Pitch 5.0 or 5.08

	I	U
	[A]	[V]
Connection data	12	250

HCA K

Description	No. of positions	Dim. a [mm]	Type	Order No.	Pcs. Pkt.
Header, 5.0 mm pitch, color: green	2	5	MSTB 2,5/2-G	17 54 43 6	50
	3	10	MSTB 2,5/3-G	17 54 45 2	
	4	15	MSTB 2,5/4-G	17 54 47 8	
	5	20	MSTB 2,5/5-G	17 54 49 4	
	6	25	MSTB 2,5/6-G	17 54 51 7	
	7	30	MSTB 2,5/7-G	17 54 53 3	
	8	35	MSTB 2,5/8-G	17 54 55 9	
	9	40	MSTB 2,5/9-G	17 54 57 5	
	10	45	MSTB 2,5/10-G	17 54 59 1	
	11	50	MSTB 2,5/11-G	17 54 61 4	
	12	55	MSTB 2,5/12-G	17 54 63 0	
	13	60	MSTB 2,5/13-G	17 54 65 6	
	14	65	MSTB 2,5/14-G	17 54 67 2	
	15	70	MSTB 2,5/15-G	17 54 69 8	
	16	75	MSTB 2,5/16-G	17 54 71 1	
	17	80	MSTB 2,5/17-G	17 54 73 7	
	18	85	MSTB 2,5/18-G	17 54 75 3	
	19	90	MSTB 2,5/19-G	17 54 77 9	
	20	95	MSTB 2,5/20-G	17 54 79 5	
	21	100	MSTB 2,5/21-G	17 54 81 8	
	22	105	MSTB 2,5/22-G	17 54 83 4	
	23	110	MSTB 2,5/23-G	17 54 85 0	
	24	115	MSTB 2,5/24-G	17 54 87 6	
	Header, 5.08 mm pitch, color: green	2	5.08	MSTB 2,5/2-G-5,08	
3		10.16	MSTB 2,5/3-G-5,08	17 59 02 0	
4		15.24	MSTB 2,5/4-G-5,08	17 59 03 3	
5		20.32	MSTB 2,5/5-G-5,08	17 59 04 6	
6		25.40	MSTB 2,5/6-G-5,08	17 59 05 9	

7	30.48	MSTB 2,5/7-G-5,08	17 59 06 2
8	35.56	MSTB 2,5/8-G-5,08	17 59 07 5
9	40.64	MSTB 2,5/9-G-5,08	17 59 08 8
10	45.72	MSTB 2,5/10-G-5,08	17 59 09 1
11	50.80	MSTB 2,5/11-G-5,08	17 59 10 1
12	55.88	MSTB 2,5/12-G-5,08	17 59 11 4
13	60.96	MSTB 2,5/13-G-5,08	17 59 12 7
14	66.04	MSTB 2,5/14-G-5,08	17 59 13 0
15	71.12	MSTB 2,5/15-G-5,08	17 59 14 3
16	76.20	MSTB 2,5/16-G-5,08	17 59 15 6
17	81.28	MSTB 2,5/17-G-5,08	17 59 16 9
18	86.36	MSTB 2,5/18-G-5,08	17 59 17 2
19	91.44	MSTB 2,5/19-G-5,08	17 59 18 5
20	96.52	MSTB 2,5/20-G-5,08	17 59 19 8
21	101.60	MSTB 2,5/21-G-5,08	17 59 20 8
22	106.68	MSTB 2,5/22-G-5,08	17 59 21 1
23	111.76	MSTB 2,5/23-G-5,08	17 59 22 4
24	116.84	MSTB 2,5/24-G-5,08	17 59 23 7

Technical data**Dimensions**

see description

Pitch	[mm]	5.0 / 5.08
Pin dimensions	[mm] x [mm]	1x1
Hole diameter	[mm]	1.4

Technical data in accordance with IEC / DIN VDE

Insulation material group	–		IIIa	
Surge voltage category / contamination class	–/–	III / 3	III / 2	II / 2
Rated voltage	[V]	250	320	400
Rated surge voltage	[kV]	4	4	4
Nominal current	[A]		12	
Maximum load current per position	[A]		12	

Insulation material

PBT

Inflammability class acc. to UL 94

V0

Temperature indices RTI/Ti

140/120

Approval data (UL and CSA)

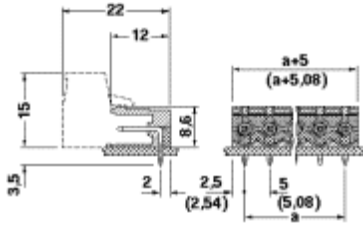
Nominal voltage / current / conductor sizes	UL: [V] / [A] / AWG	300 / 10 / –
	CSA: [V] / [A] / AWG	300 / 10 / –

Articles printed in bold can be delivered at short notice.
Products with black or gray housing available on request.

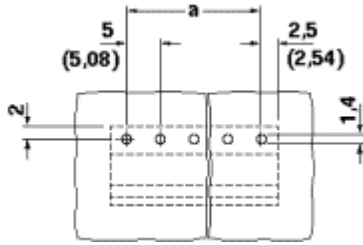
Note:

Only actuate COMBICON plug connectors when under no load condition. If for operating reasons small loads must be switched, experimental values are available on request.

Dimensional drawing



Drilling diagram



MSTBV 2,5/...-G

Open-end header,
plug-in direction **vertical** to the p.c.b.

Pitch 5.0 or 5.08

	I	U
	[A]	[V]
Connection data	12	250

HCA K

Description	No. of positions	Dim. a [mm]	Type	Order No.	Pcs. Pkt.
Header, 5.0 mm pitch, color: green	2	5	MSTBV 2,5/2-G	17 53 43 7	50
	3	10	MSTBV 2,5/3-G	17 53 45 3	
	4	15	MSTBV 2,5/4-G	17 53 47 9	
	5	20	MSTBV 2,5/5-G	17 53 49 5	
	6	25	MSTBV 2,5/6-G	17 53 51 8	
	7	30	MSTBV 2,5/7-G	17 53 53 4	
	8	35	MSTBV 2,5/8-G	17 53 55 0	
	9	40	MSTBV 2,5/9-G	17 53 57 6	
	10	45	MSTBV 2,5/10-G	17 53 59 2	
	11	50	MSTBV 2,5/11-G	17 53 61 5	
	12	55	MSTBV 2,5/12-G	17 53 63 1	
	13	60	MSTBV 2,5/13-G	17 53 65 7	
	14	65	MSTBV 2,5/14-G	17 53 67 3	
	15	70	MSTBV 2,5/15-G	17 53 69 9	
	16	75	MSTBV 2,5/16-G	17 53 71 2	
	17	80	MSTBV 2,5/17-G	17 53 73 8	
	18	85	MSTBV 2,5/18-G	17 53 75 4	
	19	90	MSTBV 2,5/19-G	17 53 77 0	
	20	95	MSTBV 2,5/20-G	17 53 79 6	
	21	100	MSTBV 2,5/21-G	17 53 81 9	
	22	105	MSTBV 2,5/22-G	17 53 83 5	
	23	110	MSTBV 2,5/23-G	17 53 85 1	
	24	115	MSTBV 2,5/24-G	17 53 87 7	
	Header, 5.08 mm pitch, color: green	2	5,08	MSTBV 2,5/2-G-5,08	
3		10,16	MSTBV 2,5/3-G-5,08	17 58 02 1	
4		15,24	MSTBV 2,5/4-G-5,08	17 58 03 4	
5		20,32	MSTBV 2,5/5-G-5,08	17 58 04 7	
6		25,40	MSTBV 2,5/6-G-5,08	17 58 05 0	

6	25,40	MSTBV 2,5/6-G-5,08	17 58 05 0
7	30,48	MSTBV 2,5/7-G-5,08	17 58 06 3
8	35,56	MSTBV 2,5/8-G-5,08	17 58 07 6
9	40,64	MSTBV 2,5/9-G-5,08	17 58 08 9
10	45,72	MSTBV 2,5/10-G-5,08	17 58 09 2
11	50,80	MSTBV 2,5/11-G-5,08	17 58 10 2
12	55,88	MSTBV 2,5/12-G-5,08	17 58 11 5
13	60,96	MSTBV 2,5/13-G-5,08	17 58 12 8
14	66,04	MSTBV 2,5/14-G-5,08	17 58 13 1
15	71,12	MSTBV 2,5/15-G-5,08	17 58 14 4
16	76,20	MSTBV 2,5/16-G-5,08	17 58 15 7
17	81,28	MSTBV 2,5/17-G-5,08	17 58 16 0
18	86,36	MSTBV 2,5/18-G-5,08	17 58 17 3
19	91,44	MSTBV 2,5/19-G-5,08	17 58 18 6
20	96,52	MSTBV 2,5/20-G-5,08	17 58 19 9
21	101,60	MSTBV 2,5/21-G-5,08	17 58 20 9
22	106,68	MSTBV 2,5/22-G-5,08	17 58 21 2
23	111,76	MSTBV 2,5/23-G-5,08	17 58 22 5
24	116,84	MSTBV 2,5/24-G-5,08	17 58 23 8

Technical data**Dimensions**

see description

Pitch	[mm]	5.0 / 5.08
Pin dimensions	[mm] x [mm]	1x1
Hole diameter	[mm]	1.4

Technical data in accordance with IEC / DIN VDE

Insulation material group	–		IIIa	
Surge voltage category / contamination class	–/–	III / 3	III / 2	II / 2
Rated voltage	[V]	250	320	400
Rated surge voltage	[kV]	4	4	4
Nominal current	[A]		12	
Maximum load current per position	[A]		12	

Insulation material

PBT

Inflammability class acc. to UL 94

V0

Temperature indices RTI/Ti

140/120

Approval data (UL and CSA)

Nominal voltage / current / conductor sizes	UL: [V] / [A] / AWG	300 / 10 / –
	CSA: [V] / [A] / AWG	300 / 10 / –

Articles printed in bold can be delivered at short notice.**Products with black or gray housing available on request.****Note:**

Only actuate COMBICON plug connectors when under no load condition. If for operating reasons small loads must be switched, experimental values are available on request.

Dimensional drawing

