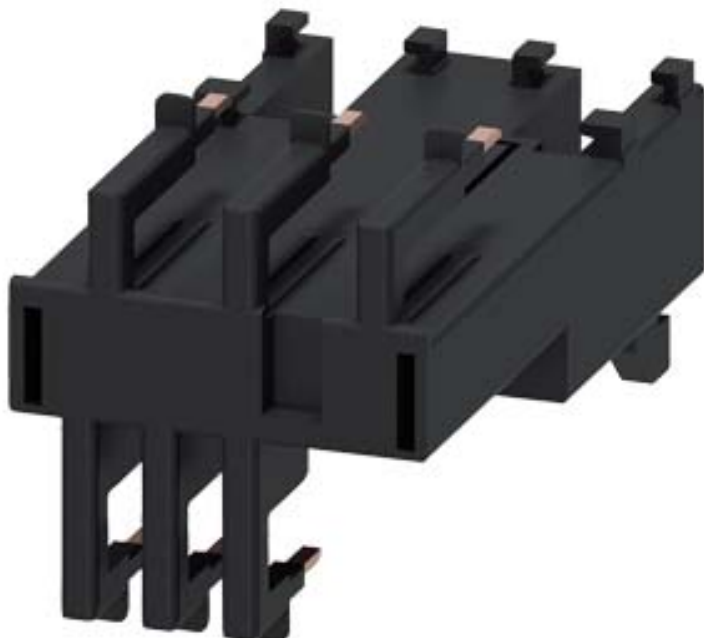


LINK MODULE, ELECTRICAL AND MECHANICAL,
FOR 3RV2011 AND 3RT201., SPRING-LOADED
TERMINALS





General technical data:

product brand name		SIRIUS
Product designation		link module
Design of the product		actuating voltage contactor: AC and DC
Size of the circuit-breaker		S00
Size of contactor		S00

Installation/ mounting/ dimensions:

Mounting type		clip-on
---------------	--	---------

Certificates/ approvals:

General Product Approval			Declaration of Conformity	Test Certificates	
 CSA	 UL		 EG-Konf.	Typprüfbescheinigung/Werkszeugnis	spezielle Prüfbescheinigungen

Shipping Approval					other
 ABS	 BUREAU VERITAS	 GL	 PRS	 RINA	Umweltbestätigung

other
Bestätigungen

Further information

Information- and Downloadcenter (Catalogs, Brochures,...)

<http://www.siemens.com/industrial-controls/catalogs>

Industry Mall (Online ordering system)

<http://www.siemens.com/industrymall>

Cax online generator

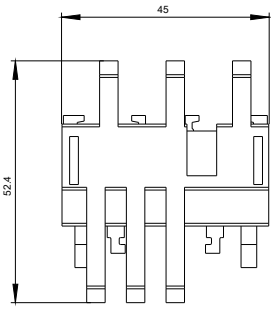
<http://support.automation.siemens.com/WW/CAXorder/default.aspx?lang=en&mlfb=3RA29112AA00>

Service&Support (Manuals, Certificates, Characteristics, FAQs,...)

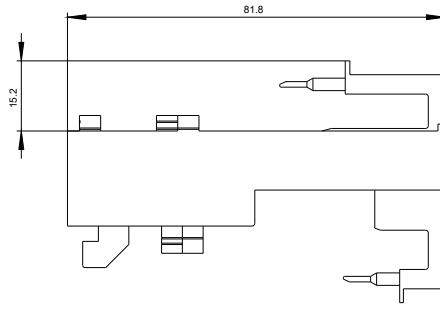
<https://support.industry.siemens.com/cs/ww/en/ps/3RA29112AA00>

Image database (product images, 2D dimension drawings, 3D models, device circuit diagrams, EPLAN macros, ...)

http://www.automation.siemens.com/bilddb/cax_de.aspx?mlfb=3RA29112AA00&lang=en



last modified:



22.02.2016