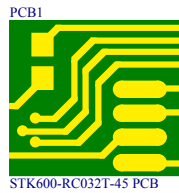
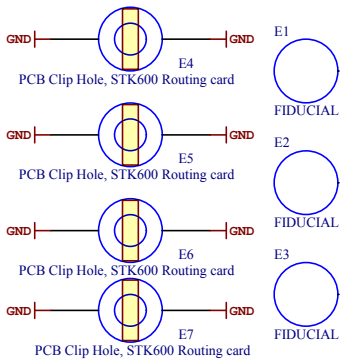
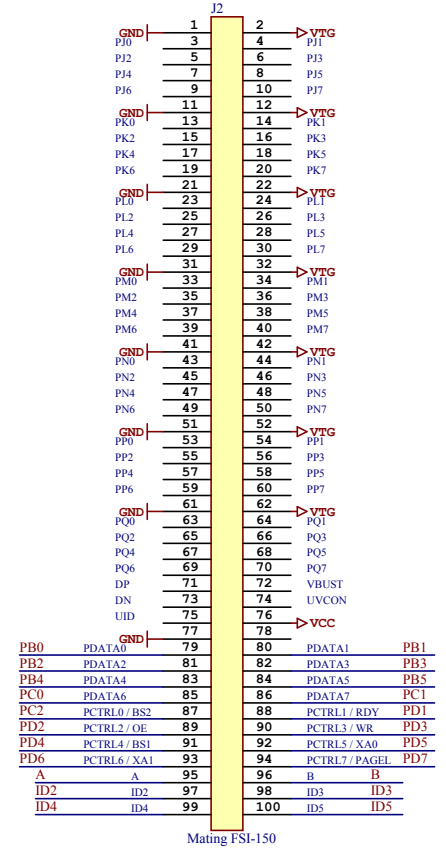
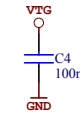
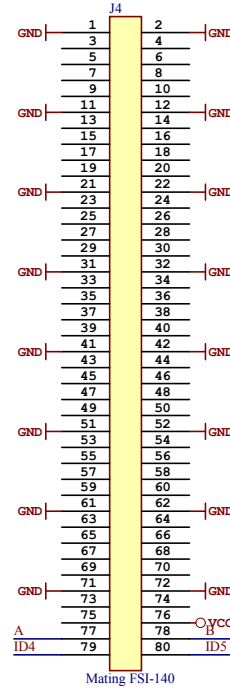
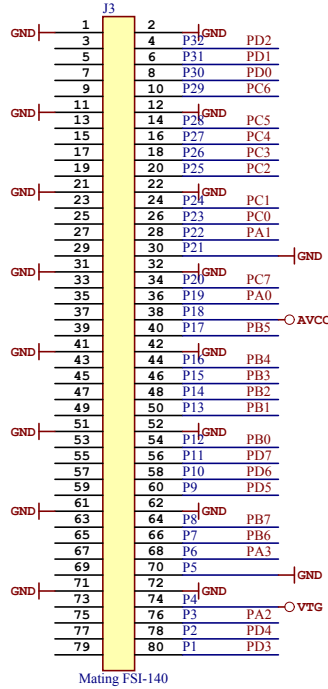
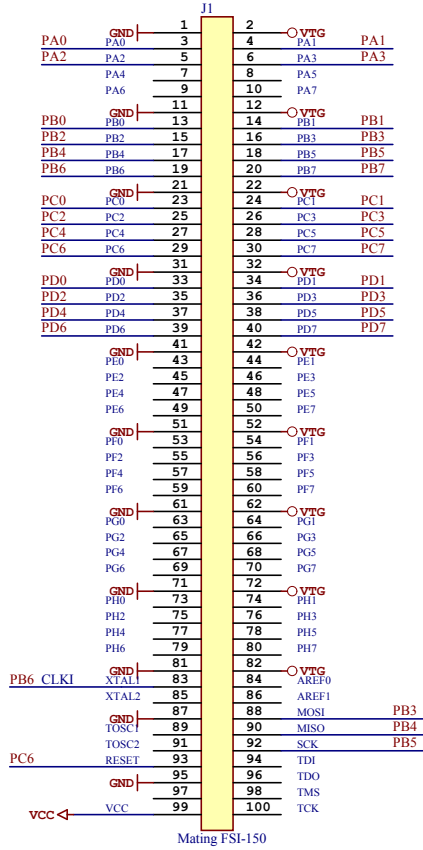
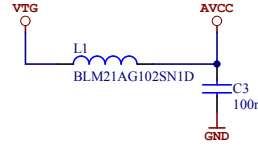


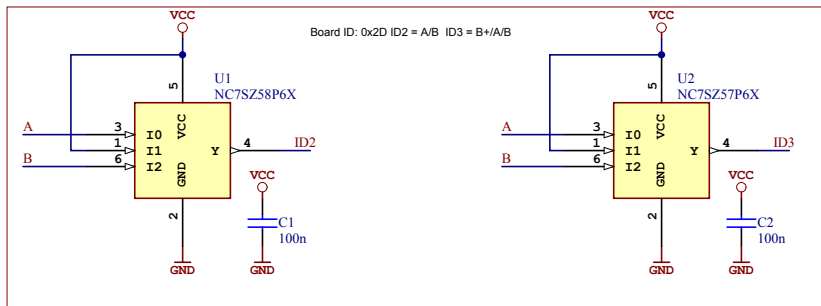
STK600-RC032T-45

Routing card for STK600

J3 and J4 mates with the socket card, while J1 and J2 goes down to the mother board. J1 is physical placed below J3, and J2 below J4.



LABEL1
Product number/revision
Serial number
Label PCB A



ATMEL Norway	*			
Vestre Rosten 79	*			
N-7075 TILLER	*			
NORWAY				
Date:	07.04.2010	10:02:10	PAGE: 1 of 1	
Document number:	*		Revision: 1	
TITLE: STK600-RC020T-44				
STK600-RC032T-45_SchDoc				

Comment	Description	Designator	Footprint	LibRef	Quantity
CAP-NONPOL	Ceramic capacitor, SMD 0603, X7R, 16V, ±10 %	C1	AP1-00002	A01-0087	1
CAP-NONPOL	Ceramic capacitor, SMD 0603, X7R, 16V, ±10 %	C2	AP1-00002	A01-0087	1
CAP-NONPOL	Ceramic capacitor, SMD 0603, X7R, 16V, ±10 %	C3	AP1-00002	A01-0087	1
CAP-NONPOL	Ceramic capacitor, SMD 0603, X7R, 16V, ±10 %	C4	AP1-00002	A01-0087	1
FIDUCIAL	Fiducial point for PCB coordinates	E1	AP8-00100	A08-0065	1
FIDUCIAL	Fiducial point for PCB coordinates	E2	AP8-00100	A08-0065	1
FIDUCIAL	Fiducial point for PCB coordinates	E3	AP8-00100	A08-0065	1
Hole for clip between boards	Clip hole 4,2 mm with locking spring 10,1*2,0 mm	E4	AP8-00215	A08-0281	1
Hole for clip between boards	Clip hole 4,2 mm with locking spring 10,1*2,0 mm	E5	AP8-00215	A08-0281	1
Hole for clip between boards	Clip hole 4,2 mm with locking spring 10,1*2,0 mm	E6	AP8-00215	A08-0281	1
Hole for clip between boards	Clip hole 4,2 mm with locking spring 10,1*2,0 mm	E7	AP8-00215	A08-0281	1
Mating footprint only, not a physical component	Mating footprint for FSI-150-03-G-D-AD	J1	AP8-00169	A08-0180	1
Mating footprint only, not a physical component	Mating footprint for FSI-150-03-G-D-AD	J2	AP8-00169	A08-0180	1
Mating footprint only, not a physical component	Mating footprint for FSI-140-03-G-D-AD	J3	AP8-00170	A08-0181	1
Mating footprint only, not a physical component	Mating footprint for FSI-140-03-G-D-AD	J4	AP8-00170	A08-0181	1
INDUCTOR	SMD RF inductor 0805. Z=1000Ohm (@100MHz), Max R(dc)=0.45Ohm, Max current=200mA	L1	AP3-00002	A03-0004	1
PCBA_LABEL	PCBA identification label PP Top White Gloss	LABEL1	AP8-00317	A09-0611	1
PCB	STK600-RC032T-45 PCB	PCB1		A08-0732	1
7SZ57	Configurable 2-input logic gate	U1	AP6-00015	A06-0189	1
Famell# 1652014	Configurable 2-input logic gate	U2	AP6-00015	A06-0185	1