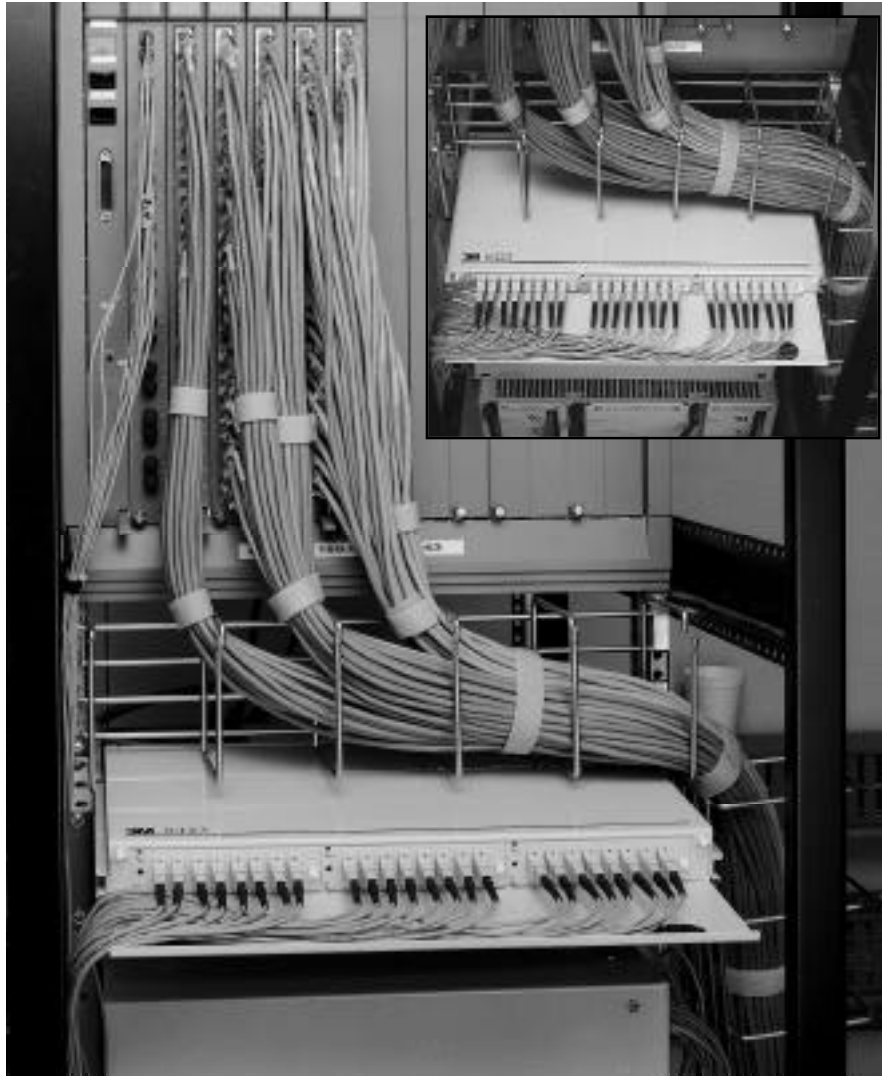




8423 Rack Mount Fiber Optic Patch Panel



The 3M™ 8423 Rack Mount Patch Panel provides a low-profile compact solution for terminating up to 24 optical fibers. At less than 1.75 inches (44.4 mm) high, the panel fits easily into 1 unit of rack space. The addition of the 3M 8423-EXP panel upgrades the unit to 48 ports.

The panel is mounted on unique glides that permit drawer-like movement of the panel within the rack. The movement provides front access to the rear without disturbing the cable or moving adjacent equipment. The glides have built-in adjustable “stops” that allow the installer to select flush or mid-mounting of the panel in its returned position.

The front of the panel forms a shelf providing physical protection to the connectors and routing options for the patch cords.

The cable enters parallel to the rear of the housing, allowing the unit to be installed in smaller enclosures or close to walls. All cable openings are protected by grommets to prevent damage to fibers.

Separately available coupling plates and blank covers allow the units to be customized to suit a variety of connector styles and fiber counts. The units use standard 3M™ 8400 Series Coupling Plates to simplify ordering and inventory. These plates also fit 3M™ 8425 Fiber Distribution Unit, and 3M™ 8430 Series Wall Mount Patch Panels.

The housings are constructed of powder-painted baked-epoxy galvanized steel, providing excellent protection in rough service field applications while maintaining a clean and tidy appearance.

Fibers can be field-terminated or spliced to pigtails with the addition of an optional splice organizer or organizer tray.

8423 Series Rack Mount Patch Panels are part of 3M’s large family of fiber optic products including connectors, couplings, cable assemblies, attenuators, splices and more. By ordering the 8423 Rack Mount Patch Panel with these other high-quality 3M products, users can receive a fully compatible solution that meets the specific job requirements.

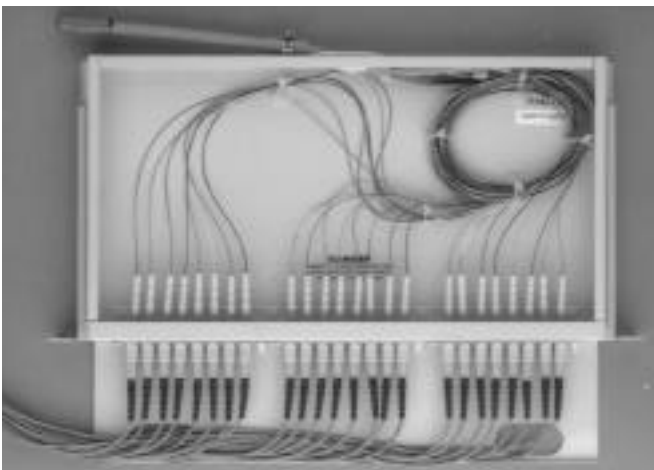
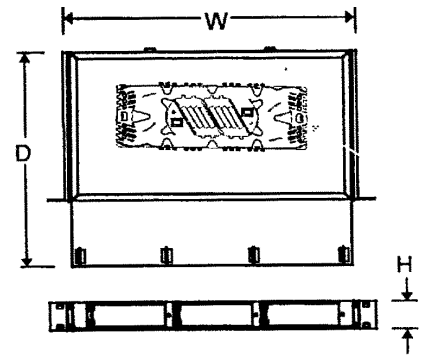
3M 8423 Rack Mount Fiber Optic Patch Panels

Features	Benefits
24 ports within one unit of rack space	Conserves space
“Glide” mounting system	Provides easy rack-front access to rear compartment and jumpers
Adjustable “stops” in glides	Allows positive stops for flush or mid-mount applications
Assortment of standard coupling plates	Available in all major connector styles
Pre-assembled coupling plates	Saves time
Grommeted cable and cable entry	Reduced rear dust entry
No tools entry to rear compartment	Rapid access
Powder-painted baked-epoxy galvanized steel	Rugged and durable

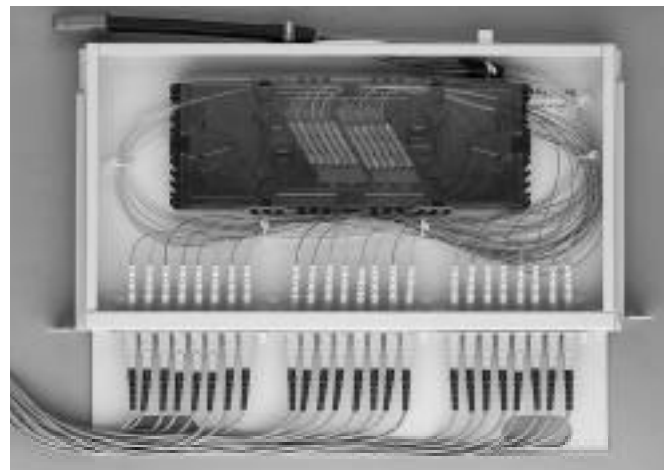
To order, specify the correct product number from the chart below. For more information on the complete line of products, contact your 3M sales representative at 1-800-745-7459.

Ordering Information for 3M™ 8423 Rack Mount Patch Panels

Product	Capacity plates (trays)	Dimensions H X W X D in. (cm)	Weight lbs. (kg.)	Pkg.	Minimum Order
8423 Patch Panel	3 (2)	1.71 x 17.5 x 13 (4.3 x 44.4 x 33)	8.8 (4.0)	1/cs.	1 each
8423-BKT 23" (58.4) Rack Mounting Kit		25 (58.4)	8.8 (4.0)	1/ cs.	1 each
8423-EXP Expander for 8423 Patch Panel	3 (2)	1.6 x 16.75 x 9 (4.1 x 42.5 x 23)	2.4 (1.1)	1/ cs.	1 each
8423-S Pre-Stubbed Rack Mount Patch Panel		1.5 x 19 x 13 (3.8 x 48.2 x 33)	8.8 (4.0)	1/ cs.	1 each
Optional Splice Tray and Accessories					
2522 Tray	12 splices 2 inserts	14.9 x 4.3 x 0.65 (37.8 x 10.9 x 1.6)	1.8 (0.8)	3/cs.	3 each
2521-F Fusion Splice Insert	6 splices	N/A	0.6 (0.3)	2/pkg.	12 packages
2521-FL Fibrok™ Splice Insert	6 splices	N/A	0.6 (0.3)	2/pkg.	12 packages



2



3

Ordering Information for 3M™ 8400 Series Coupling Plates

Product	Description	Dimensions H x W x L in. (cm)	Weight oz. (gm)	Min. order
ST* Coupling Plates				
8406-TS	6 port ST* single-mode	4.7 x 5.5 x 7.1 (11.9 x 13.9 x 18)	85.1 (3.0)	4
8406-TM	6 port ST* multimode	4.7 x 5.5 x 7.1 (11.9 x 13.9 x 18)	85.1 (3.0)	4
8408-TS	8 port ST* single-mode	4.7 x 5.5 x 7.1 (11.9 x 13.9 x 18)	99.2 (3.5)	3
8408-TM	8 port ST* multimode	4.7 x 5.5 x 7.1 (11.9 x 13.9 x 18)	99.2 (3.5)	3
8412-TS	12 port duplex ST* single-mode	4.7 x 5.5 x 7.1 (11.9 x 13.9 x 18)	127.6 (4.5)	1
8412-TM	12 port duplex ST* multimode	4.7 x 5.5 x 7.1 (11.9 x 13.9 x 18)	127.6 (4.5)	1
SC Coupling Plates				
8406-CS	6 port SC single-mode	4.7 x 5.5 x 7.1 (11.9 x 13.9 x 18)	85.1 (3.0)	4
8406-CSA	6 port SC Single-mode angle polish	4.7 x 5.5 x 7.1 (11.9 x 13.9 x 18)	85.1 (3.0)	4
8406-CM	6 port SC multimode	4.7 x 5.5 x 7.1 (11.9 x 13.9 x 18)	99.2 (3.5)	4
8406-DCS	6 Port SC Duplex Single-mode	4.7 x 5.5 x 7.1 (11.9 x 13.9 x 18)	99.2 (3.5)	4
8406-DCM	6 Port SC Duplex Multimode	4.7 x 5.5 x 7.1 (11.9 x 13.9 x 18)	99.2 (3.5)	4
8408-CS	8 port SC single-mode	4.7 x 5.5 x 7.1 (11.9 x 13.9 x 18)	99.2 (3.5)	3
8408-CSA	8 port SC single-mode angle polish	4.7 x 5.5 x 7.1 (11.9 x 13.9 x 18)	99.2 (3.5)	3
8408-CM	8 port SC multimode	4.7 x 5.5 x 7.1 (11.9 x 13.9 x 18)	99.2 (3.5)	3
8408-DCS	8 Port SC Duplex Single-mode	4.7 x 5.5 x 7.1 (11.9 x 13.9 x 18)	99.2 (3.5)	3
8408-DCM	8 Port SC Duplex Multimode	4.7 x 5.5 x 7.1 (11.9 x 13.9 x 18)	99.2 (3.5)	3
8412-CM	12 Port SC Multimode	4.7 x 5.5 x 7.1 (11.9 x 13.9 x 18)	99.2 (3.5)	1
8412-CS	12 Port SC Single-mode	4.7 x 5.5 x 7.1 (11.9 x 13.9 x 18)	99.2 (3.5)	1
FC Coupling Plates				
8406-FS	6 port FC single-mode	4.7 x 5.5 x 7.1 (11.9 x 13.9 x 18)	85.1 (3.0)	4
8406-FM	6 port FC multimode	4.7 x 5.5 x 7.1 (11.9 x 13.9 x 18)	85.1 (3.0)	4
8406-FSA	6 port FC single-mode angle polish	4.7 x 5.5 x 7.1 (11.9 x 13.9 x 18)	85.1 (3.0)	4
8406-FSA/R	6 port FC single-mode angle polish	4.7 x 5.5 x 7.1 (11.9 x 13.9 x 18)	85.1 (3.0)	4
8408-FS	8 port FC single-mode	4.7 x 5.5 x 7.1 (11.9 x 13.9 x 18)	99.2 (3.5)	3
8408-FM	8 port FC multimode	4.7 x 5.5 x 7.1 (11.9 x 13.9 x 18)	99.2 (3.5)	3
8408-FSA	8 port FC single-mode angle polish	4.7 x 5.5 x 7.1 (11.9 x 13.9 x 18)	99.2 (3.5)	3
8408-FSA/R	8 port FC single-mode angle polish	4.7 x 5.5 x 7.1 (11.9 x 13.9 x 18)	99.2 (3.5)	3
8499-1W	Single position blank plate	4.7 x 5.5 x 7.1 (11.9 x 13.9 x 18)	28.4 (1.5)	4
8499-4W*	Four position blank plate	4.7 x 5.5 x 7.1 (11.9 x 13.9 x 18)	99.2 (3.5)	1

Note: All coupling plates loaded with specified 3M couplings.

*For use in the 3M™ 8425 Fiber Distribution Unit only.

ST* is a Trademark of Lucent.

Important Notice

All statements, technical information, and recommendations related to Seller's products are based on information believed to be reliable, but the accuracy or completeness thereof is not guaranteed. Before utilizing the product, the user should determine the suitability of the product for its intended use. The user assumes all risks and liability whatsoever in connection with such use.

Any statements or recommendations of the Seller which are not contained in the Seller's current publications shall have no force or effect unless contained in an agreement signed by an authorized office of Seller. The statements contained herein are made in lieu of all warranties, express or implied, including but not limited to the implied warranties of merchantability and fitness for a particular purpose which warranties are hereby expressly disclaimed.

SELLER SHALL NOT BE LIABLE TO THE USER OR ANY OTHER PERSON UNDER ANY LEGAL THEORY, INCLUDING BUT NOT LIMITED TO NEGLIGENCE OR STRICT LIABILITY, FOR ANY INJURY OR FOR ANY DIRECT OR CONSEQUENTIAL DAMAGES SUSTAINED OR INCURRED BY REASON OF THE USE OF ANY OF THE SELLER'S PRODUCTS THAT WERE DEFECTIVE.



Telecom Systems Division

6801 River Place Blvd.
Austin, TX 78726-9000
800/426 8688
FAX 800/626 0329
<http://www.mmm.com/telecom>



Recycled paper
50% pre-consumer
10% post-consumer

Litho in USA.

© 3M 1997 80-6109-3994-6 (0977.5)W