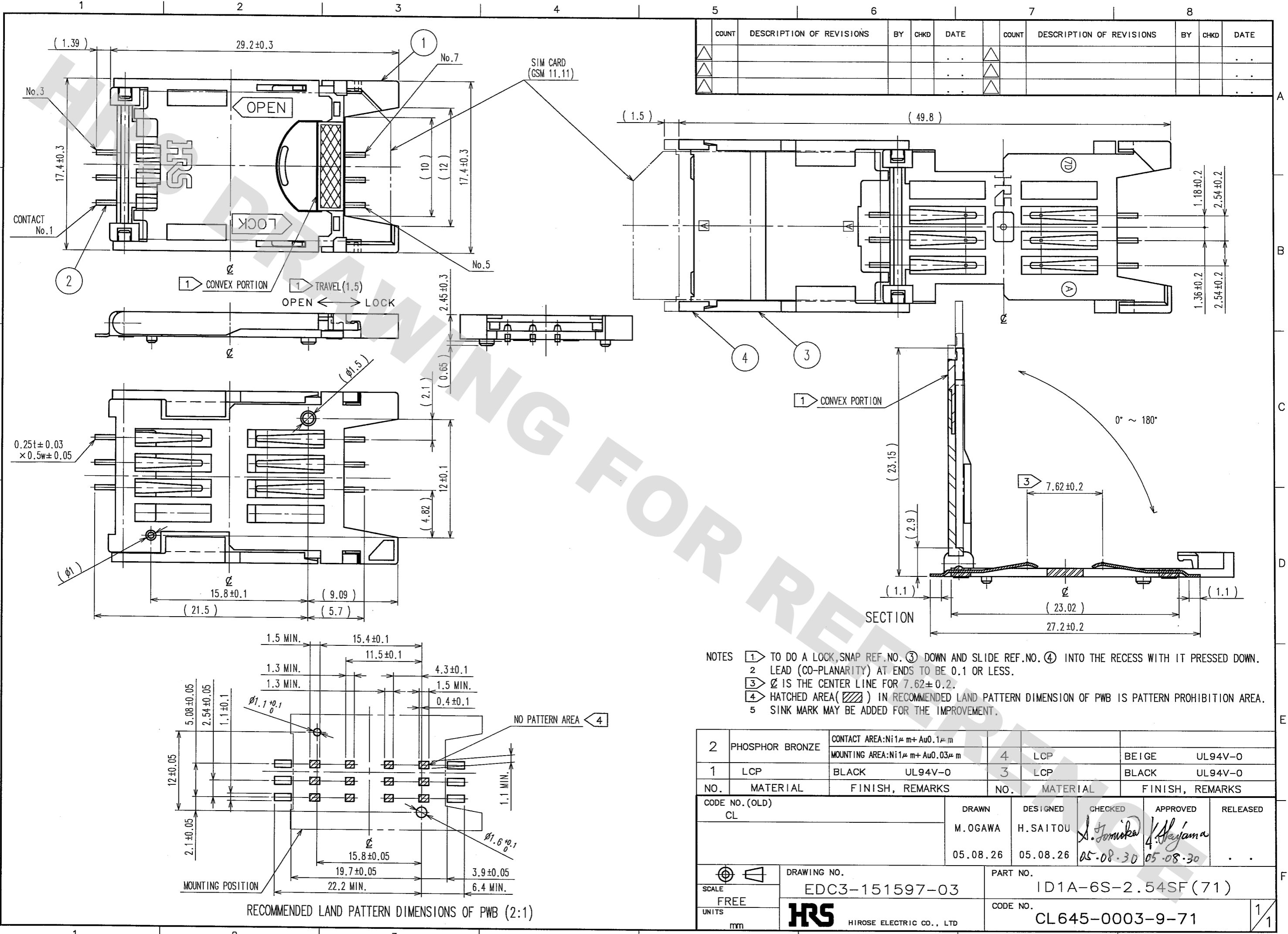


DRAWING FOR REFERENCE: This is subject to change without notice  
08/11/2012



| COUNT | DESCRIPTION OF REVISIONS | BY | CHKD | DATE | COUNT | DESCRIPTION OF REVISIONS | BY | CHKD | DATE |
|-------|--------------------------|----|------|------|-------|--------------------------|----|------|------|
|       |                          |    |      |      |       |                          |    |      |      |
|       |                          |    |      |      |       |                          |    |      |      |
|       |                          |    |      |      |       |                          |    |      |      |

- NOTES
- 1 TO DO A LOCK, SNAP REF. NO. ③ DOWN AND SLIDE REF. NO. ④ INTO THE RECESS WITH IT PRESSED DOWN.
  - 2 LEAD (CO-PLANARITY) AT ENDS TO BE 0.1 OR LESS.
  - 3  $\varnothing$  IS THE CENTER LINE FOR  $7.62 \pm 0.2$ .
  - 4 HATCHED AREA (▨) IN RECOMMENDED LAND PATTERN DIMENSION OF PWB IS PATTERN PROHIBITION AREA.
  - 5 SINK MARK MAY BE ADDED FOR THE IMPROVEMENT.

|     |                 |   |     |          |                 |         |
|-----|-----------------|---|-----|----------|-----------------|---------|
| 2   | PHOSPHOR BRONZE | CONTACT AREA: Ni1 $\mu$ m + Au0.1 $\mu$ m | 4   | LCP      | BEIGE           | UL94V-0 |
| 1   | LCP             | BLACK                                     | 3   | LCP      | BLACK           | UL94V-0 |
| NO. | MATERIAL        | FINISH, REMARKS                           | NO. | MATERIAL | FINISH, REMARKS |         |

| CODE NO. (OLD) | DRAWN    | DESIGNED  | CHECKED            | APPROVED         | RELEASED |
|----------------|----------|-----------|--------------------|------------------|----------|
| CL             | M. OGAWA | H. SAITOU | <i>S. Tomikida</i> | <i>H. Hayama</i> |          |
|                | 05.08.26 | 05.08.26  | 05.08.30           | 05.08.30         |          |

|       |                                     |                    |
|-------|-------------------------------------|--------------------|
| SCALE | DRAWING NO.                         | PART NO.           |
| FREE  | EDC3-151597-03                      | ID1A-6S-2.54SF(71) |
| UNITS | mm                                  | CODE NO.           |
|       | <b>HRS</b> HIROSE ELECTRIC CO., LTD | CL645-0003-9-71    |

|    |
|----|
| TO |
|    |
|    |
|    |

RECOMMENDED LAND PATTERN DIMENSIONS OF PWB (2:1)