

Ordering number C10684_EVA-D

| | | | |
|-----------------|---------|-------------|------------|
| Family | Eva | FWHM | 16 degrees |
| Type | Lens | Efficiency | 89 % |
| LED | NS9x383 | cd/lm | 6.800 |
| Color | Clear | Gerber File | Available |
| Diameter | 35 mm | | |
| Height | 16.4 mm | | |
| Style | Round | | |
| Optic Material | PMMA | | |
| Holder Material | - | | |
| Fastening | - | | |
| Status | Ready | | |

Outer flange can be secured in fixture for hardware-free attachment

Ordering number C10685_EVA-M

| | | | |
|-----------------|---------|-------------|------------|
| Family | Eva | FWHM | 24 degrees |
| Type | Lens | Efficiency | 88 % |
| LED | NS9x383 | cd/lm | 3.700 |
| Color | Clear | Gerber File | Available |
| Diameter | 35 mm | | |
| Height | 16.4 mm | | |
| Style | Round | | |
| Optic Material | PMMA | | |
| Holder Material | - | | |
| Fastening | - | | |
| Status | Ready | | |

Outer flange can be secured in fixture for hardware-free attachment

Ordering number C10686_EVA-W

| | | | |
|-----------------|---------|-------------|------------|
| Family | Eva | FWHM | 39 degrees |
| Type | Lens | Efficiency | 81 % |
| LED | NS9x383 | cd/lm | 1.600 |
| Color | Clear | Gerber File | Available |
| Diameter | 35 mm | | |
| Height | 16.4 mm | | |
| Style | Round | | |
| Optic Material | PMMA | | |
| Holder Material | - | | |
| Fastening | - | | |
| Status | Ready | | |

Outer flange can be secured in fixture for hardware-free attachment

Ordering number C12828_EVA-O

| | | | |
|-----------------|---------|-------------|---------------|
| Family | Eva | FWHM | 39+15 degrees |
| Type | Lens | Efficiency | 87 % |
| LED | NS9x383 | cd/lm | 3.700 |
| Color | Clear | Gerber File | Available |
| Diameter | 35 mm | | |
| Height | 16.4 mm | | |
| Style | Round | | |
| Optic Material | PMMA | | |
| Holder Material | - | | |
| Fastening | - | | |
| Status | Ready | | |



PRODUCT DATASHEET
Eva series
last update 27/3/2013



NOTE: The typical divergence will be changed by different color, chip size and chip position tolerance. The typical total divergence is the full angle measured where the luminous intensity is half of the peak value.



PRODUCT DATASHEET Eva series

last update 27/3/2013



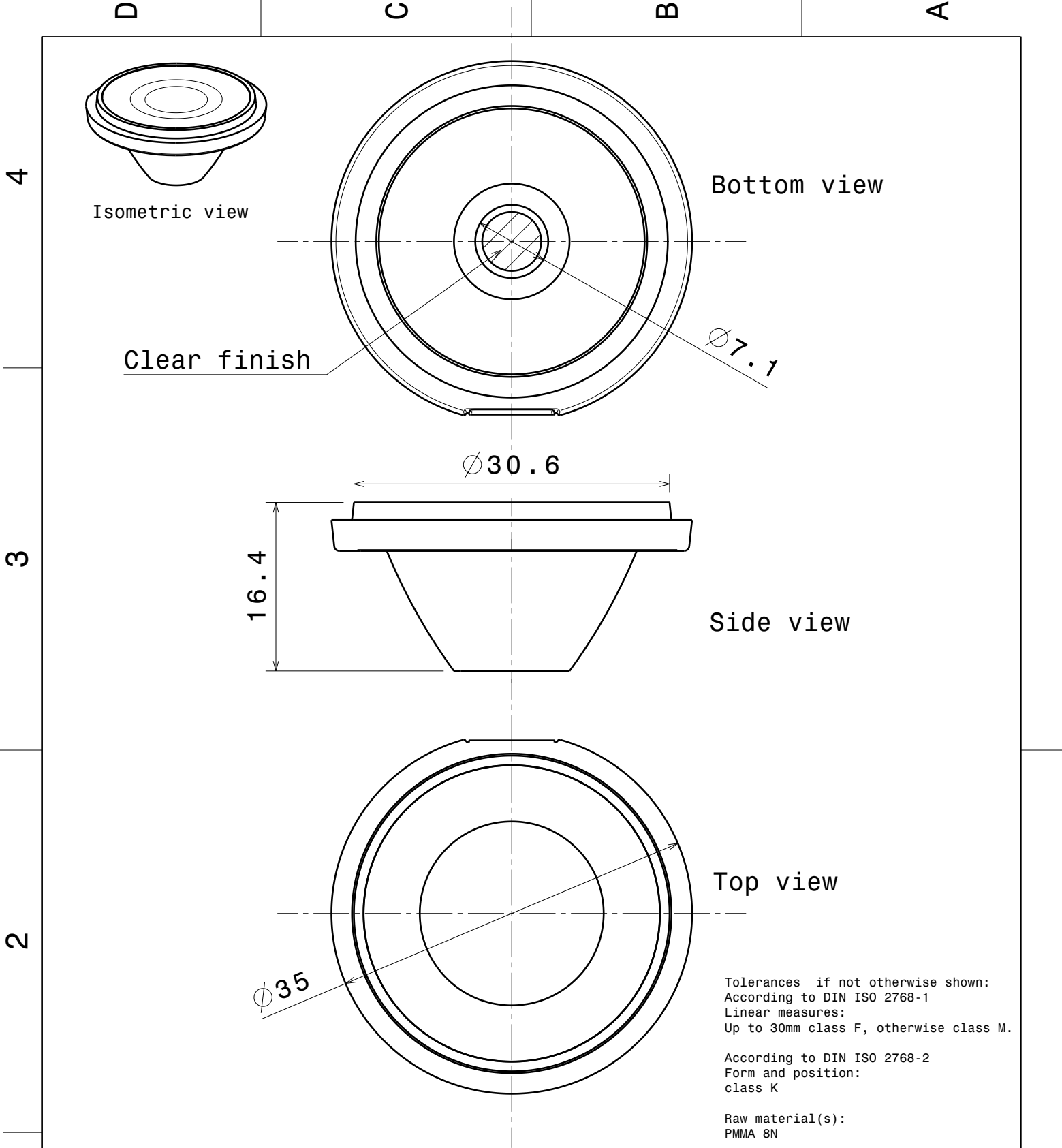
GENERAL INFORMATION

- Product series especially designed & optimized for NS9x383 series of LEDs.
- Special care taken to make light distribution as uniform as possible.
- Lens material optical grade PMMA with high UV and temperature resistance. Allows use of high current and temperature conditions.

Please find more information about used material from below:

http://ledil.fi/sites/default/files/Documents/Technical/Material/PMMA%20N%20UL94_Yellow%20Card.pdf

<http://ledil.fi/sites/default/files/Documents/Technical/Material/PMMA%20N%20PLEXIGLAS-Datasheet.pdf>



Tolerances if not otherwise shown:
 According to DIN ISO 2768-1
 Linear measures:
 Up to 30mm class F, otherwise class M.

According to DIN ISO 2768-2
 Form and position:
 class K

Raw material(s):
 PMMA 8N

This drawing is our property.
 It can't be reproduced
 or communicated without
 our written agreement.



Ledil Oy
 Salorankatu 10
 24100 SALO
 Finland

DRAWING TITLE

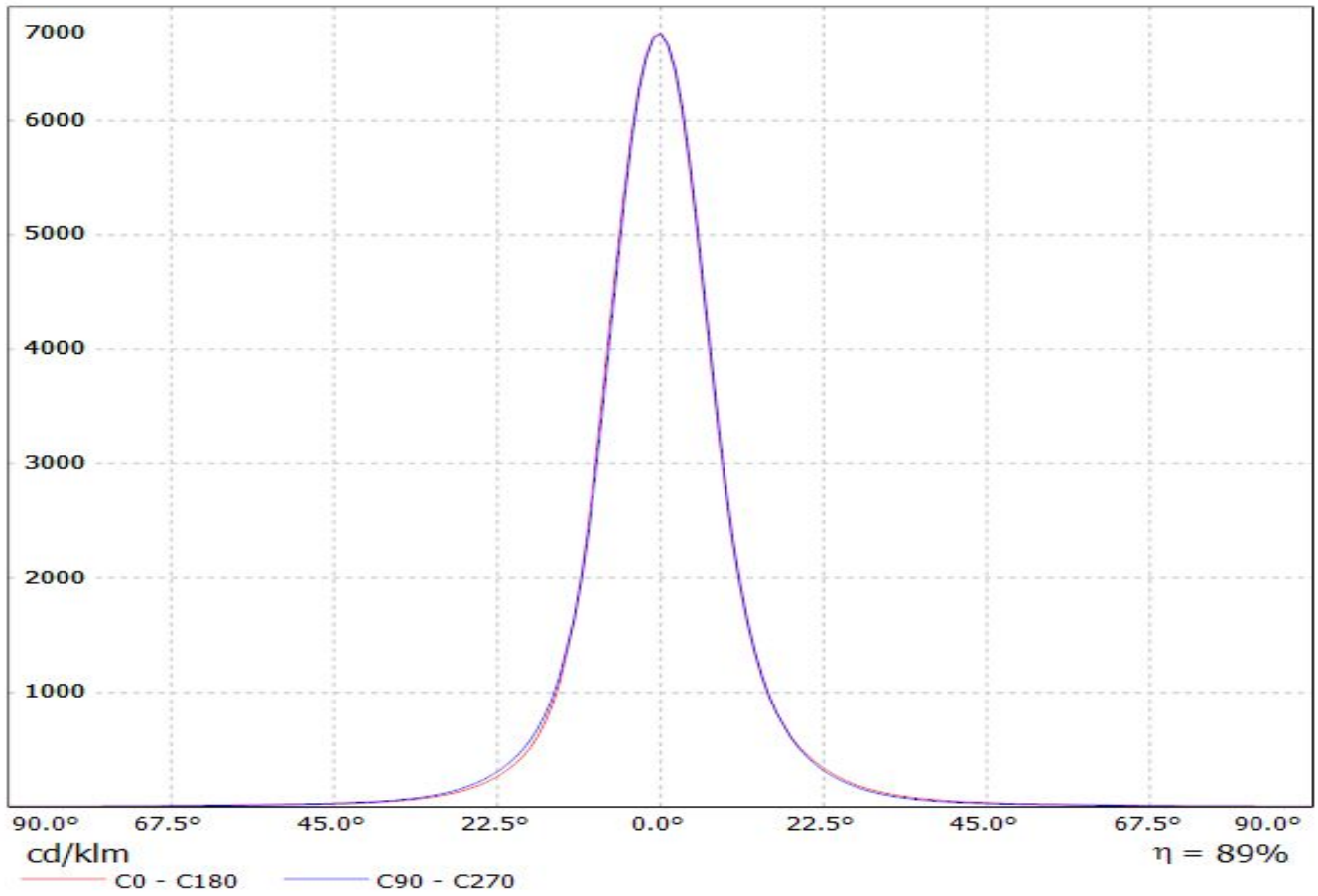
Datasheet Eva D Lens

| | | | | | | | |
|--------------------------|---------------------------|---------------------|--|-------------------|--------------------------------|---------------------|-----------------|
| DRAWN BY ah | DATE 1.3.2013 | SIZE A4 | | | DRAWING NUMBER 11677 | | REV 2 |
| CHECKED BY | DATE | SCALE 2:1 | | WEIGHT (g) | | SHEET 1/1 | |
| DESIGNED BY HH | DATE 26.08.2008 | | | | | | |

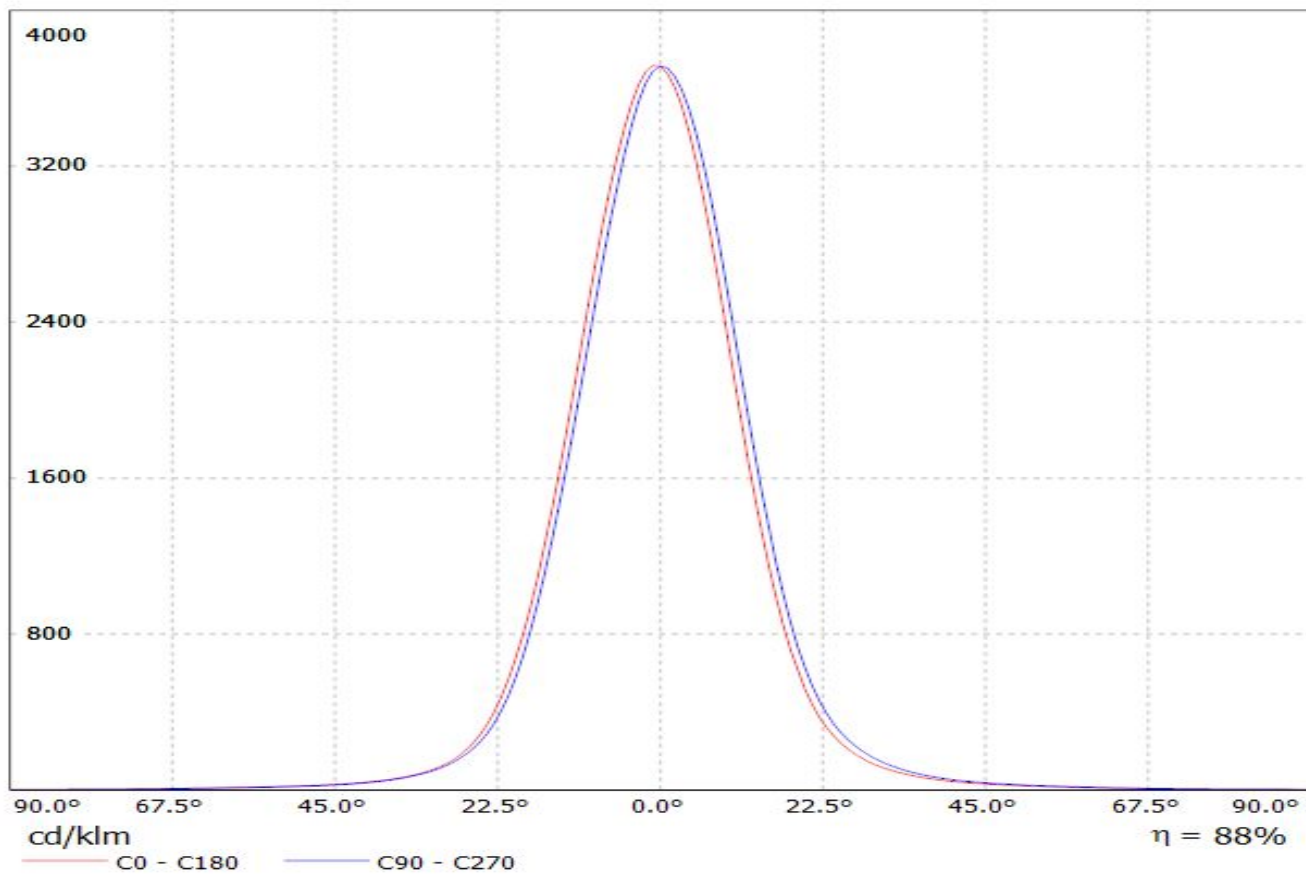
1

1

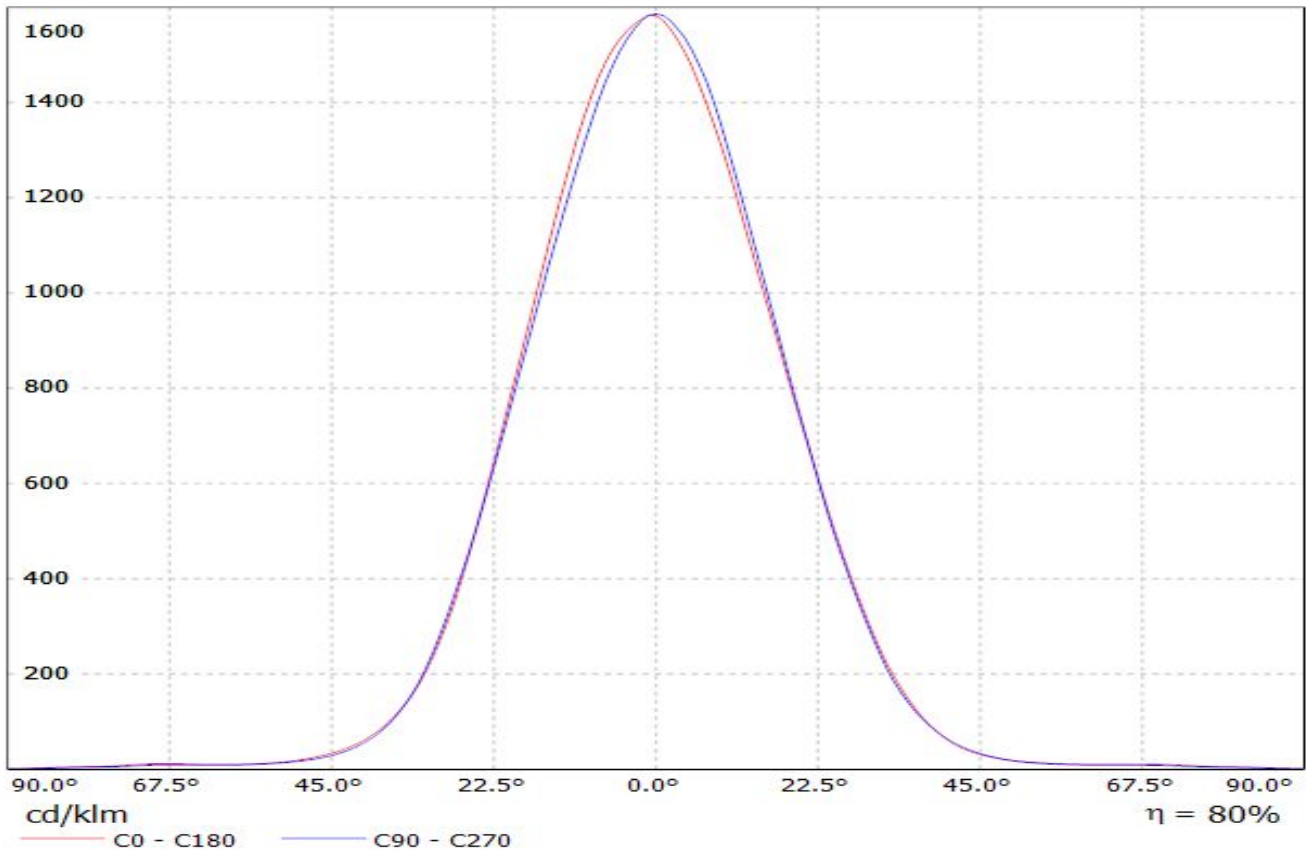
Luminaire: LEDiL Oy C10684_EVA-D_(NS9x383) Eff. 89.4%
Lamps: 1 x Nichia NS9x383 (105lm@250mA)



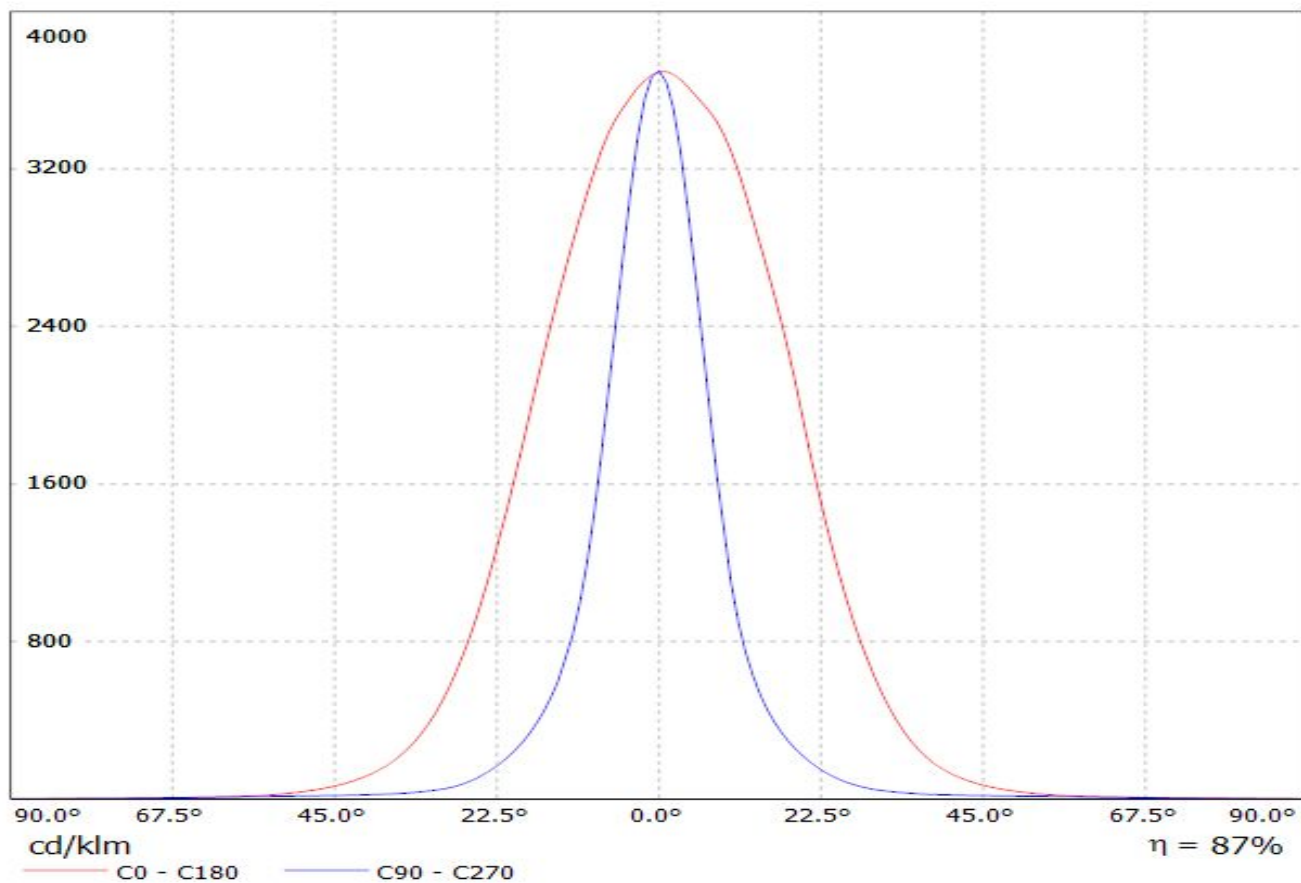
Luminaire: LEDiL Oy C10685_EVA-M Eff.87.9%
Lamps: 1 x Nichia NS9x383 (107.656lm@250mA)



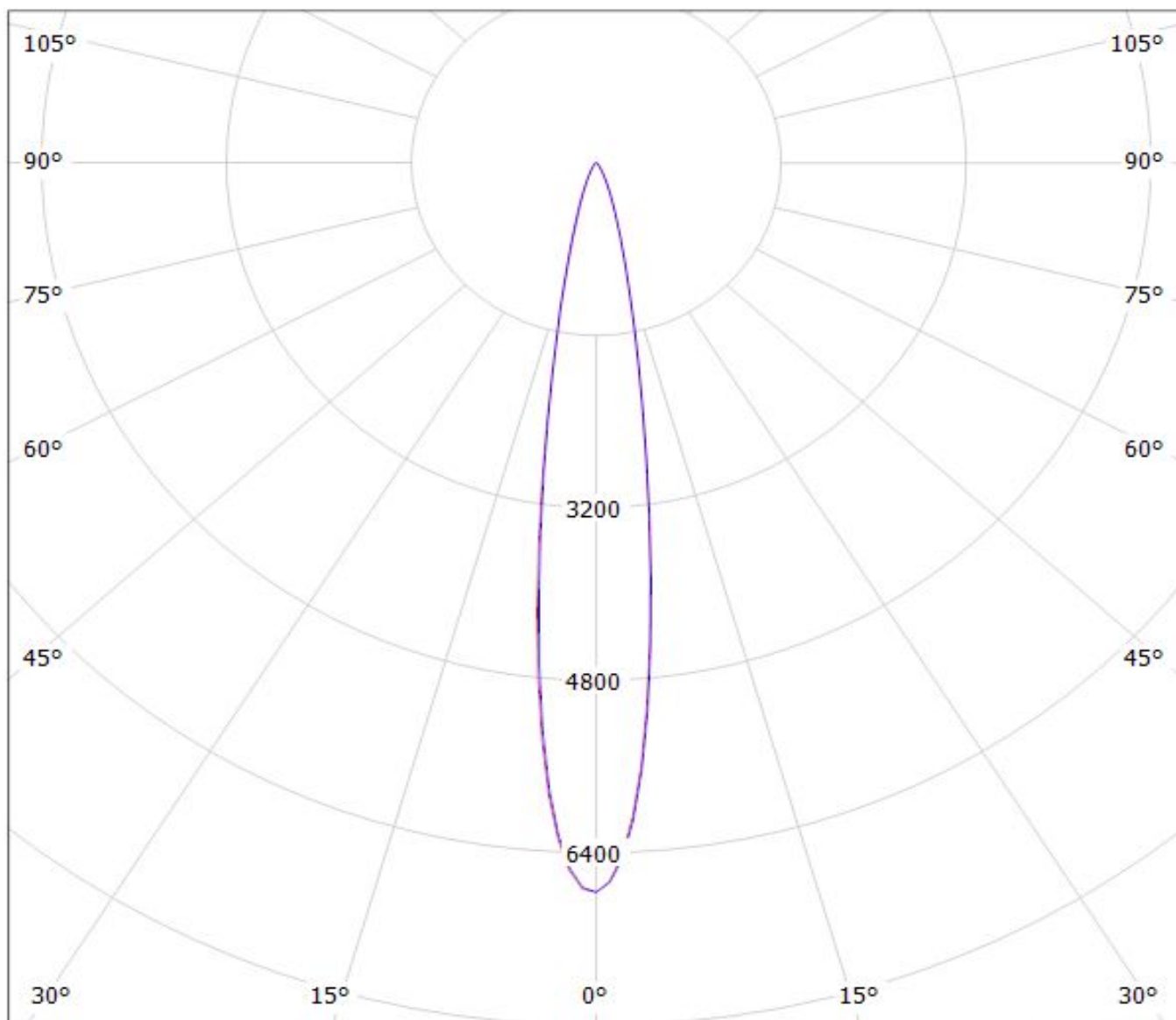
Luminaire: LEDiL Oy C10686_EVA-W (NS9x383) Eff.80.5%
Lamps: 1 x Nichia NS9x383 (107.656lm@250mA)



Luminaire: LEDiL Oy C12828_EVA-O_(NS9x383) Eff. 87,3%
Lamps: 1 x Nichia NS9x383 (105lm@250mA)



Luminaire: LEDiL Oy C10684_EVA-D_(NS9x383) Eff. 89,4%
Lamps: 1 x Nichia NS9x383 (105lm@250mA)

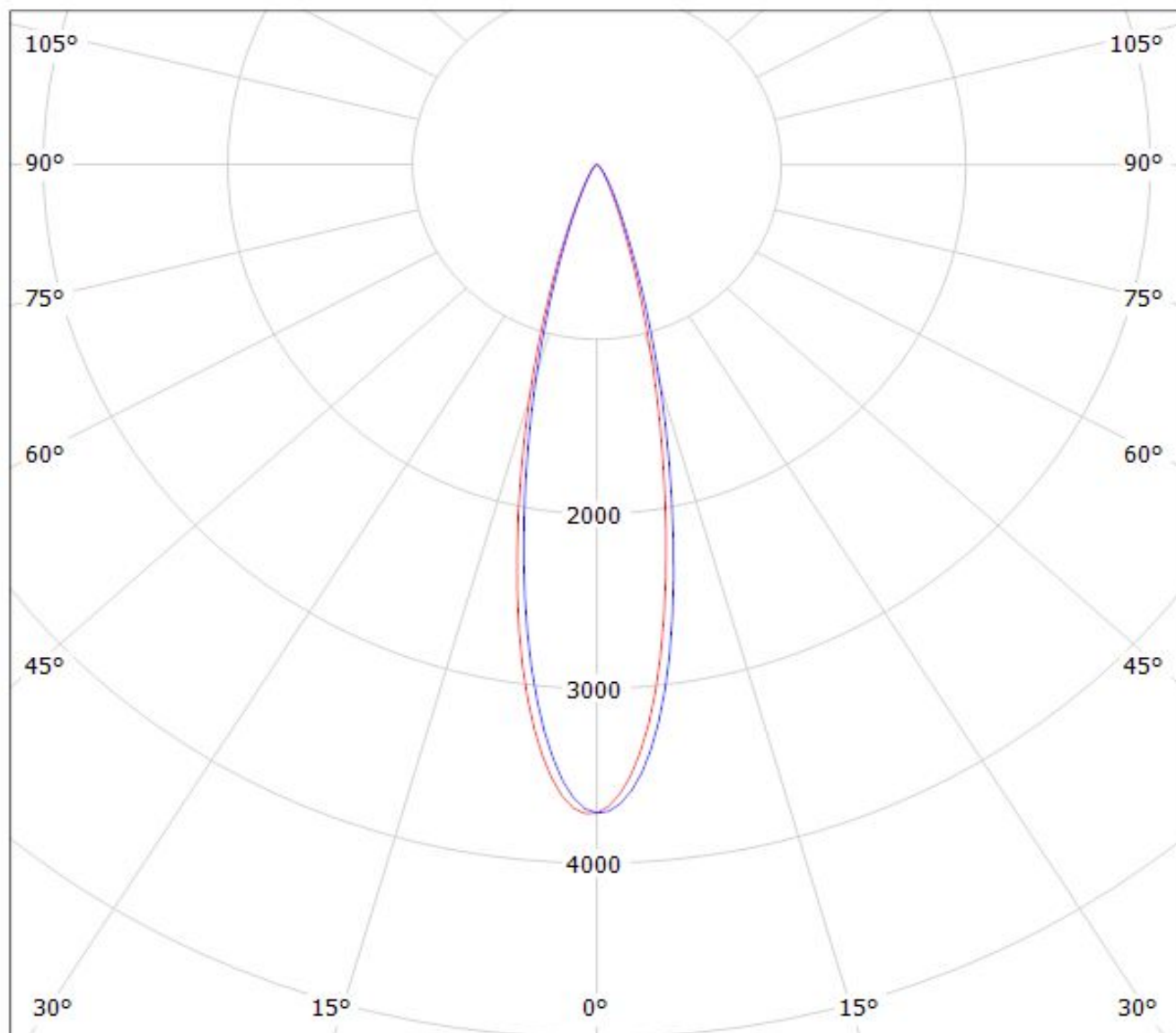


cd/klm

$\eta = 89\%$

— C0 - C180 — C90 - C270

Luminaire: LEDiL Oy C10685_EVA-M Eff.87.9%
Lamps: 1 x Nichia NS9x383 (107.656lm@250mA)



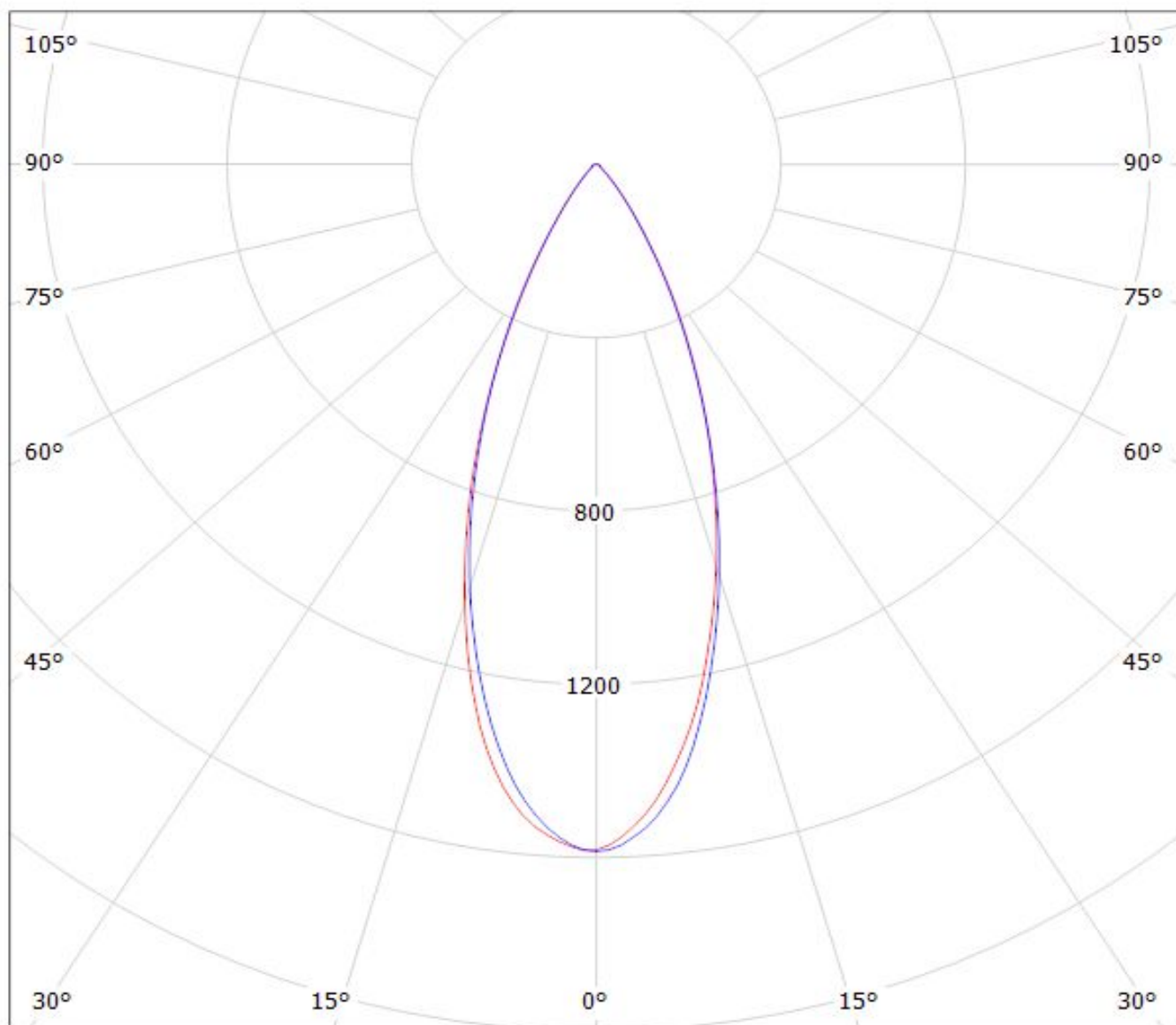
cd/klm

$\eta = 88\%$

— C0 - C180

— C90 - C270

Luminaire: LEDiL Oy C10686_EVA-W (NS9x383) Eff.80.5%
Lamps: 1 x Nichia NS9x383 (107.656lm@250mA)



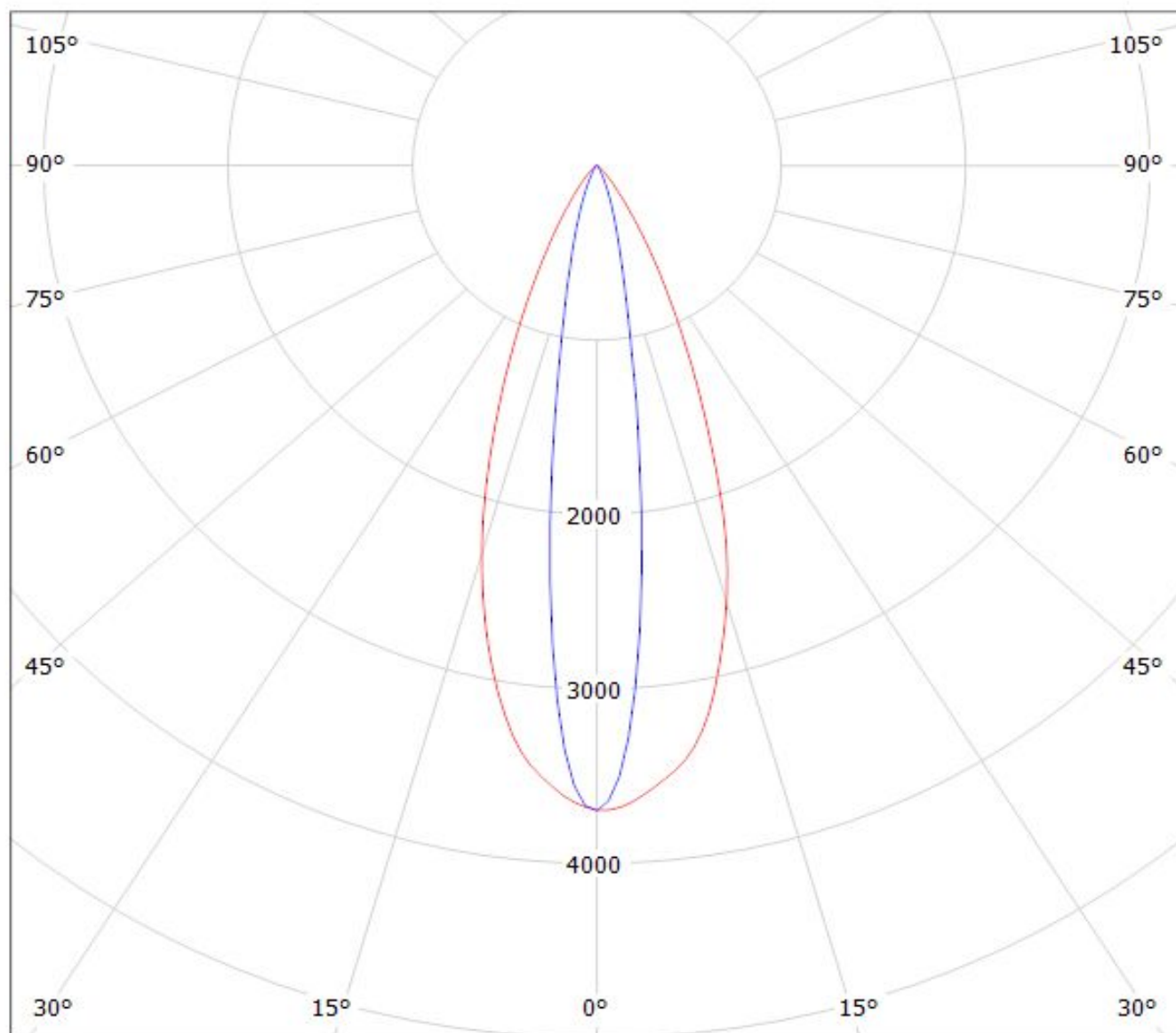
cd/klm

$\eta = 80\%$

— C0 - C180

— C90 - C270

Luminaire: LEDiL Oy C12828_EVA-O_(NS9x383) Eff. 87,3%
Lamps: 1 x Nichia NS9x383 (105lm@250mA)



cd/klm

— C0 - C180 — C90 - C270

$\eta = 87\%$