

Isobar 4

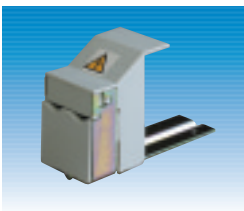
SP&N type A distribution boards - incomers



MGI1252

| Part N°. | Rating | Voltage | N°. of poles |
|----------|--------|----------|--------------|
| MGI 1252 | 125A | 230/240V | 2 |

- BS EN 60947-3.
- AC 22A.
- Cable capacity 50mm².
- Red toggle and PCI in accordance with BS 7671 Wiring Regulations.
- Tightening torque 3.5Nm.



MGCLEAT

| Part N°. | Description |
|----------|---|
| MGCLEAT | Incoming cable clamp for A type distribution boards |



RMG630302

| Part N°. | Rating | Voltage | Sensitivity |
|-------------|--------|----------|--------------------|
| RMG630302 | 63A | 230/240V | 30mA |
| RMG631002 | 63A | 230/240V | 100mA |
| RMG633002 | 63A | 230/240V | 300mA |
| RMG800302 | 80A | 230/240V | 30mA |
| RMG801002 | 80A | 230/240V | 100mA |
| RMG803002 | 80A | 230/240V | 300mA |
| 23111 | 80A | 230/240V | 300mA Time delayed |
| RMG1000302 | 100A | 230/240V | 30mA |
| RMG1001002 | 100A | 230/240V | 100mA |
| RMG1001002s | 100A | 230/240V | 100mA Time delayed |
| RMG1003002 | 100A | 230/240V | 300mA |
| 23116 | 100A | 230/240V | 300mA Time delayed |

Specification:

- BS EN 61008.
- Positive contact indication in accordance with BS 7671 (16th edition).
- Cable capacity 63A, 80A = up to 35mm²
100A = up to 50mm².
- Terminal tightening torque 2Nm (35mm²), 3.5Nm (50mm²).



MGTB1252

| Part N°. | Rating | Voltage |
|----------|--------|----------|
| MGTB1252 | 125A | 230/240V |

Specification:

- Direct connection incoming lug unit, two pole suitable for use in any Isobar 4 A type board.
- Cable capacity 50mm².
- Terminal tightening torque 3.5Nm.