



Datasheet

ENGLISH

Stock No: 831-9059

# RS Pro PG11 Nickel Plated Brass Cable Gland With Locknut



5 → 10mm Cable Dia Range, IP68

## Specifications:

**Material:** Brass Nickel Plated

**Sealing:** Neoprene

**Claw:** PA6

**Temperature:**

**Normal:** -40 °C ~ +100 °C.

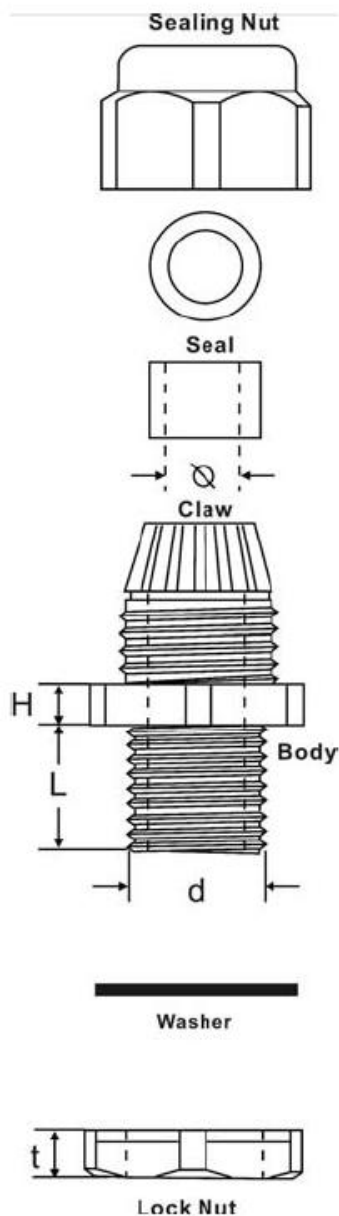
**Short Time:** +120 °C

**Standard:** RoHS, CE, IP68

**Features:** Brass glands are frequently used in the shipping and the offshore industry.

RoHS CE

Dimension:



RS Article No.	SIZE	Cable Range ( $\Phi$ ) (MM)	d (MM)	H (MM)	L (MM)	t (MM)
831-9012	M12×1.5	3—6.5	12	14	6	2.8
831-9021	M16×1.5	5—10	16	20	6	2.2
831-9024	M20×1.5	8—14	20	24	8	3.0
831-9028	M25×1.5	9—16	25	27	7.5	3.0
831-9037	M32×1.5	15—22	32	35	8.5	3.5
831-9030	M40×1.5	22—32	40	50	12	4.5
831-9034	M50×1.5	31—38	50	57	12	5.0
831-9043	M63×1.5	37—44	63	65	12	5.5
831-9046	PG7	3—6.5	12.5	14	6	2.8
831-9040	PG9	4—8	15.2	18	6.5	2.5
831-9059	PG11	5—10	18.6	20	7	3.0
831-9052	PG13.5	6—12	20.4	22	7.5	3.0
831-9056	PG16	8—14	22.5	24	7	3.0
831-9065	PG21	13—18	28.3	30	8	3.5
831-9068	PG29	18—25	37.0	40	9.5	4.0
831-9062	PG36	22—32	47.0	50	12	4.5