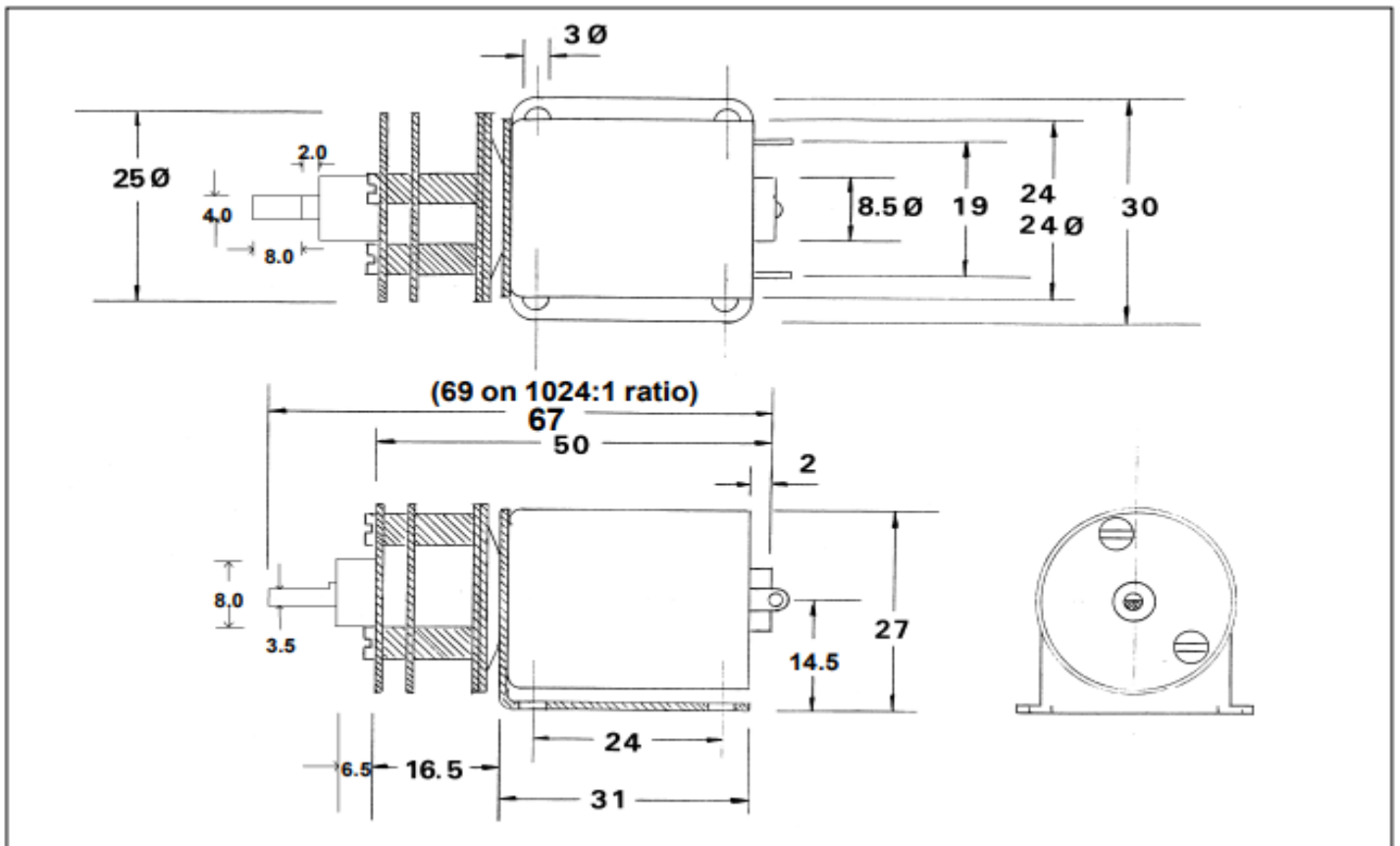
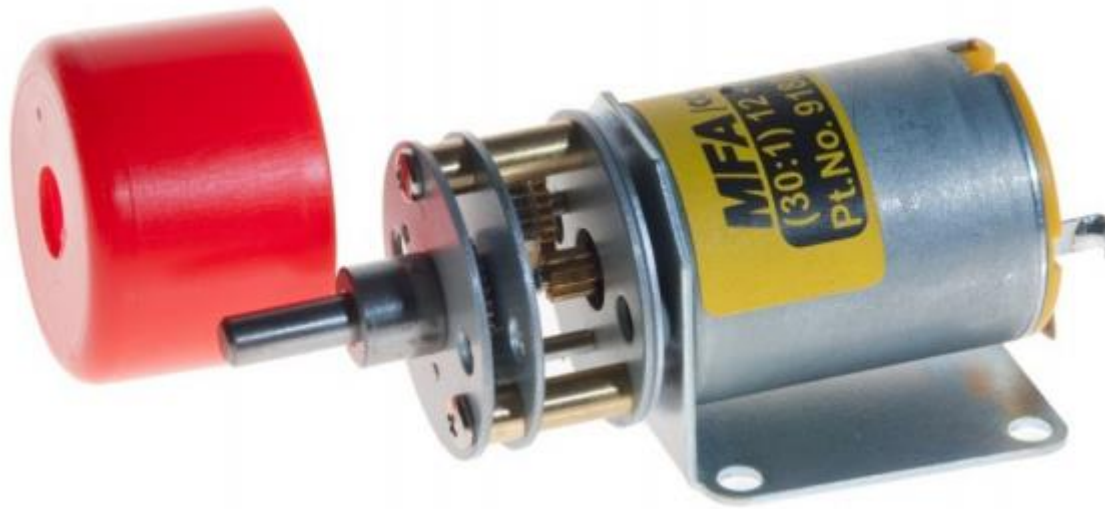


Datasheet

RS Pro Single Ratio Metal Gearbox

Stock No: 413-0593



Voltage Operating Range	No Load		At Maximum Efficiency						
	Nominal	Speed	Current	Speed	Current	Torque		Output	Eff
		R.P.M.	A	R.P.M.	A	OZ - IN	G - CM	W	%
1.5V – 3V	3 V Constant	8800	0.24	7200	1.06	0.32	23.2	1.70	53.8

Stall Torque		Weight
OZ - IN	G - CM	75g
1.75	126.0	

REDUCTION TABLE R.P.M. (No Load)

	1.5V	3.0V	6V	12V	18V	24V
413-0593	154	309				

Note: Motor speeds may vary by (+) or (-) 12.5%

No Load Backlash	Max. 2 deg.
Max. Radial Load: (10mm from flange)	300gf.
Shaft Axial Load	200gf.

This miniature gearbox is of steel and brass construction with brass gears and is mounted on a 1mm thickness steel bracket.

It incorporates a high quality three pole motor with sleeved bearings.

The design and construction of the unit make it suitable for a host of model and light industrial applications.

RE280 Motor (Ratio 30:1)

All with 4mm output shaft.

IMPORTANT NOTICE At very low ratios the torque produced by this geared motor combination may exceed the maximum permissible torque of the gearbox. In this situation the unit must not be allowed to stall as this may damage the gears

IMPORTANT NOTICE Due to the wide range of applications for this product it is the users responsibility to establish the products suitability for their individual purpose(s).