

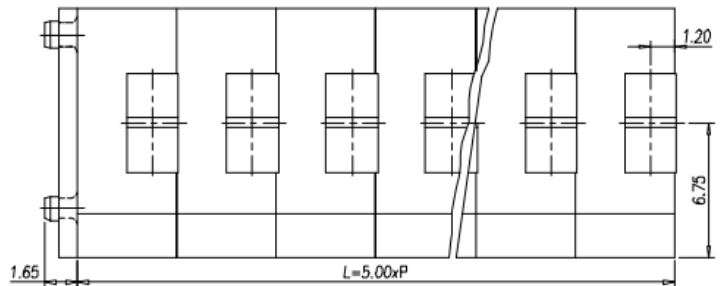
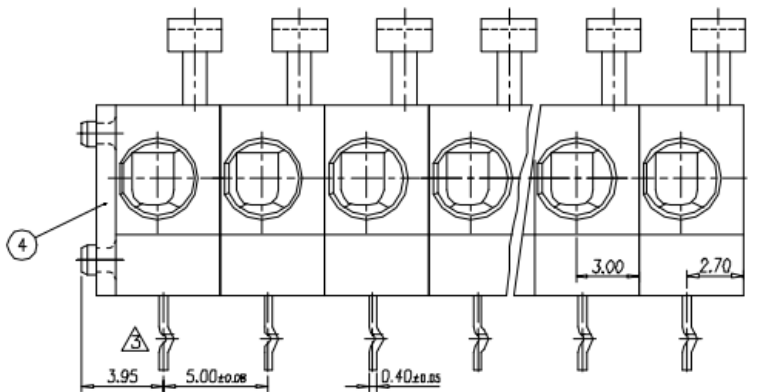
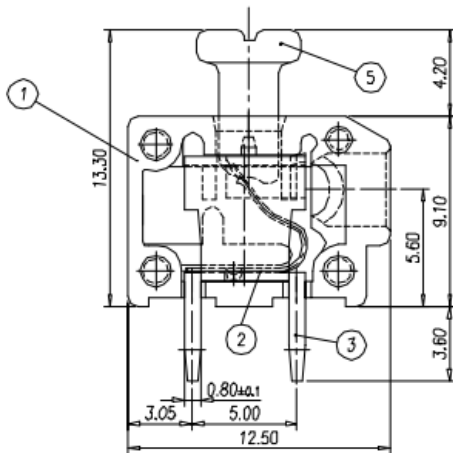
Datasheet

New 5.0mm Screwless 10A 3 Way

RS Stock 874-5483



Dimensions: (mm)

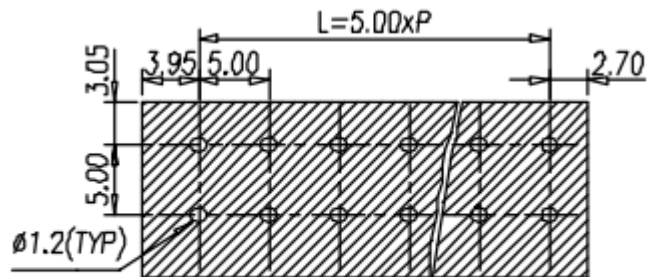


## Specifications

- Rated Voltage: 300V 10A (IEC 250V 10A)
- Pitch: 5.00mm
- Insulation Resistance:  $\geq 500\Omega\text{M}$  or more at DC500V
- Temperature Range:  $-40^{\circ}\text{C} \sim +105^{\circ}\text{C}$
- Suitable Electric Wire: 20~14AWG ( IEC 1.5mm<sup>2</sup>)

## Materials

- Housing: PA66
- Clamp: Steel
- Solder Pin: Copper
- End Cover: PA66 (VO)
- Lever: POM



P.C.B. LAYOUT(REF)