

Base strip - MC 1,5/ 6-G-3,5 THT - 1937538

Please be informed that the data shown in this PDF Document is generated from our Online Catalog. Please find the complete data in the user's documentation. Our General Terms of Use for Downloads are valid (<http://download.phoenixcontact.com>)

Header, Nominal current: 8 A, Rated voltage (III/2): 160 V, Number of positions: 6, Pitch: 3.5 mm, Color: black, Contact surface: Tin, Assembly: SMD/THT/THR, User information and design recommendations for through hole reflow technology can be found under "Downloads"




The figure shows a 10-position version of the product

Why buy this product

- Low-profile THR headers with a compact pitch
- Plug-in direction parallel to the PCB
- 3.5 mm pitch
- Delivery form: box packaging, in bulk for small series
- Delivery form: tape-on-reel packing according to IEC 60286-3 for automated mounting
- Use in SMT reflow processes



Key commercial data

Packing unit	50 pc
Minimum order quantity	50 pc
GTIN	 4 017918 890209
Weight per Piece (excluding packing)	2.3 g
Custom tariff number	85366990
Country of origin	Germany

Technical data

Dimensions

Length	9.2 mm
Pitch	3.5 mm
Dimension a	17.5 mm
Pin dimensions	0,8 x 0,8 mm
Pin spacing	3.50 mm
Hole diameter	1.4 mm

General

Base strip - MC 1,5/ 6-G-3,5 THT - 1937538

Technical data

General

Range of articles	MC 1,5/...-G-THT
Insulating material group	IIIa
Rated surge voltage (III/3)	2.5 kV
Rated surge voltage (III/2)	2.5 kV
Rated surge voltage (II/2)	2.5 kV
Rated voltage (III/3)	160 V
Rated voltage (III/2)	160 V
Rated voltage (II/2)	250 V
Connection in acc. with standard	EN-VDE
Nominal current I_N	8 A
Maximum load current	8 A (per position)
Insulating material	PA-GF
Inflammability class according to UL 94	V0
Color	black
Number of positions	6

Classifications

eCl@ss

eCl@ss 4.0	272607xx
eCl@ss 4.1	27260701
eCl@ss 5.0	27260701
eCl@ss 5.1	27260701
eCl@ss 6.0	27260704
eCl@ss 7.0	27440402
eCl@ss 8.0	27440402

ETIM

ETIM 3.0	EC001121
ETIM 4.0	EC002637
ETIM 5.0	EC002637

UNSPSC

UNSPSC 6.01	30211810
UNSPSC 7.0901	39121409
UNSPSC 11	39121409
UNSPSC 12.01	39121409
UNSPSC 13.2	39121409

Approvals

Approvals

Base strip - MC 1,5/ 6-G-3,5 THT - 1937538

Approvals

Approvals

VDE Gutachten mit Fertigungsüberwachung / GOST / IECCE CB Scheme / UL Recognized / cUL Recognized / GOST / CCA / cULus Recognized

Ex Approvals

Approvals submitted

Approval details

VDE Gutachten mit Fertigungsüberwachung

Nominal current IN	8 A
Nominal voltage UN	160 V

GOST

IECEE CB Scheme

Nominal current IN	8 A
Nominal voltage UN	160 V

UL Recognized

	B	D
Nominal current IN	8 A	8 A
Nominal voltage UN	300 V	300 V

cUL Recognized

	B	D
Nominal current IN	8 A	8 A

Base strip - MC 1,5/ 6-G-3,5 THT - 1937538

Approvals

	B	D
Nominal voltage UN	300 V	300 V

GOST

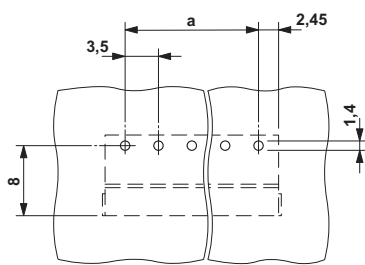
CCA

Nominal current I _N	8 A
Nominal voltage UN	160 V

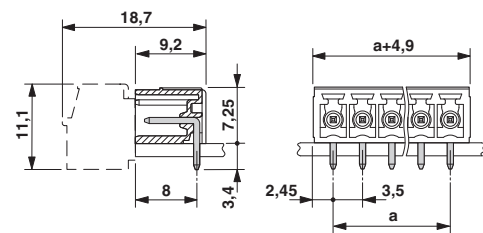
cULus Recognized

Drawings

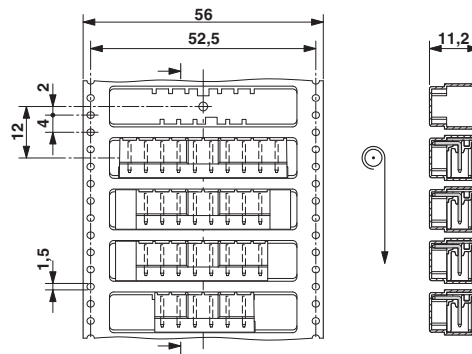
Drilling diagram



Dimensioned drawing

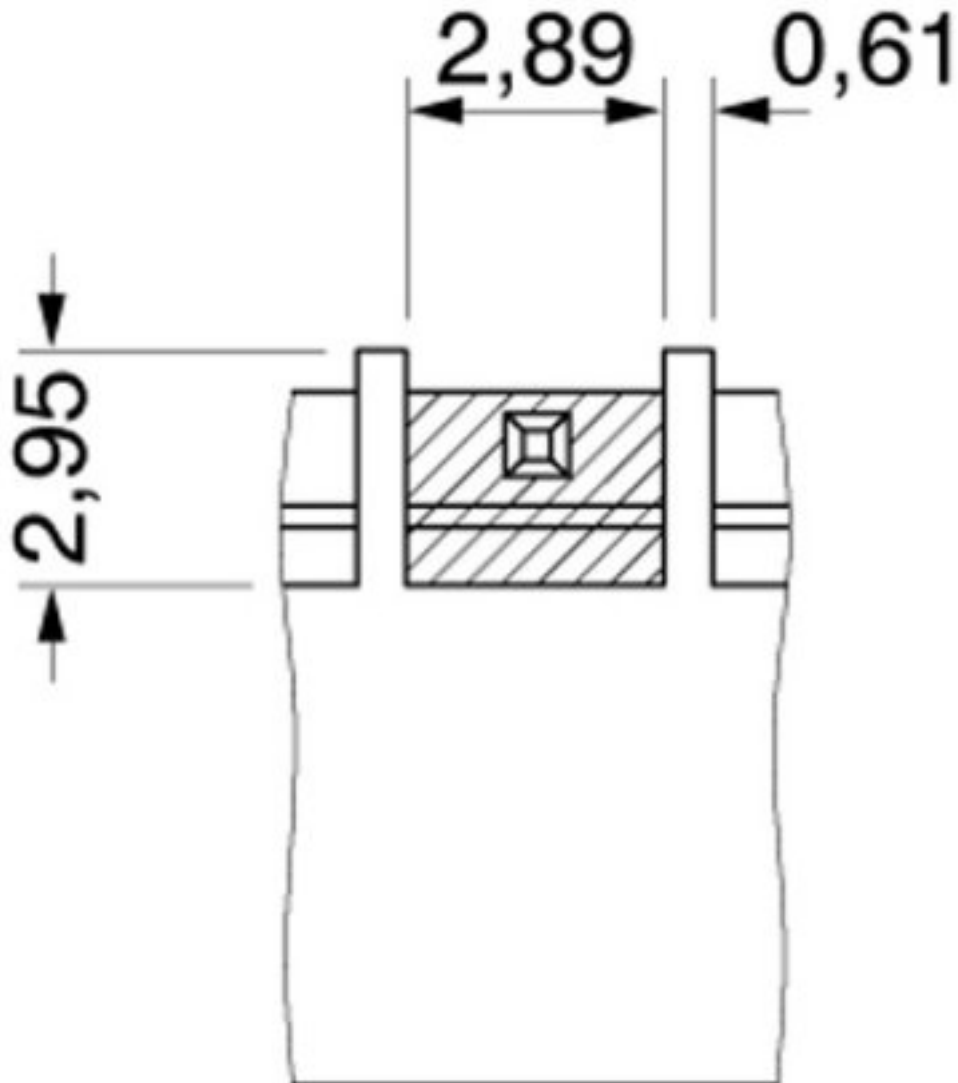


Dimensioned drawing



Base strip - MC 1,5/ 6-G-3,5 THT - 1937538

Dimensioned drawing



Bottom view, free space for solder paste, 0.3 mm deep