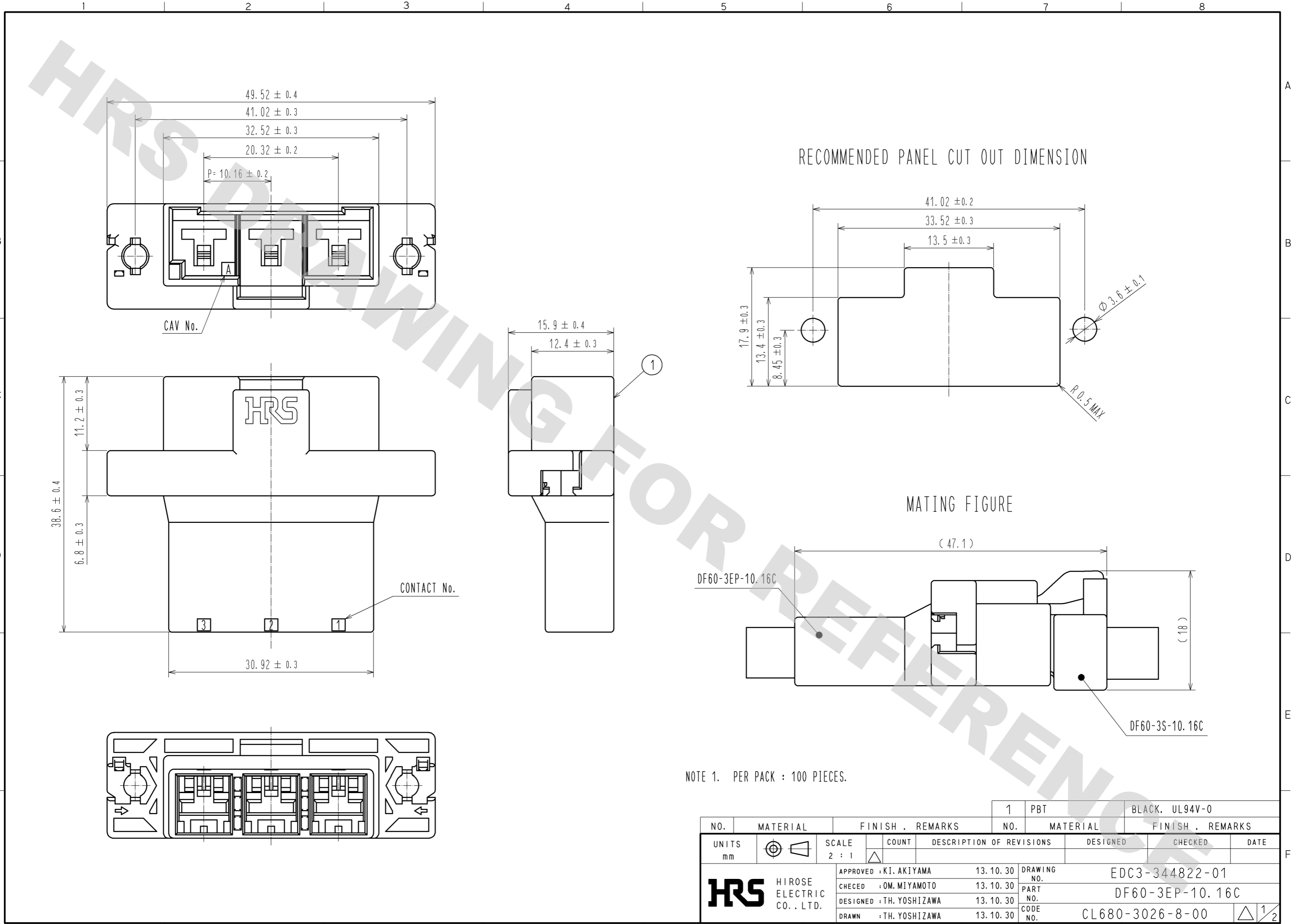


DRAWING FOR REFERENCE: This is subject to change without notice
12/05/2013

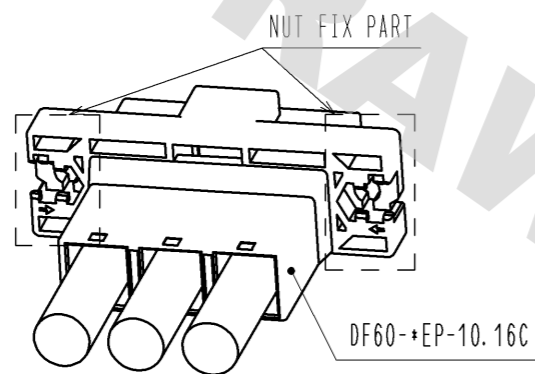


NOTE 1. PER PACK : 100 PIECES.

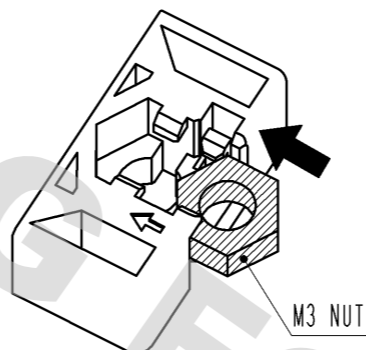
NO.	MATERIAL	FINISH . REMARKS	NO.	MATERIAL	FINISH . REMARKS
1	PBT			BLACK, UL94V-0	
UNITS		SCALE	COUNT	DESCRIPTION OF REVISIONS	DESIGNED
mm		2 : 1	Δ		CHECKED
HIROSE ELECTRIC CO., LTD.			APPROVED : KI. AKIYAMA	13. 10. 30	DATE
			CHECED : OM. MIYAMOTO	13. 10. 30	
			DESIGNED : TH. YOSHIZAWA	13. 10. 30	
			DRAWN : TH. YOSHIZAWA	13. 10. 30	
				DRAWING NO.	EDC3-344822-01
				PART NO.	DF60-3EP-10.16C
				CODE NO.	CL680-3026-8-00
				Δ 1	2

DF60 IN-LINE TYPE RECOMMENDED PANEL MOUNTING MANUAL (WHEN NUTS USES)

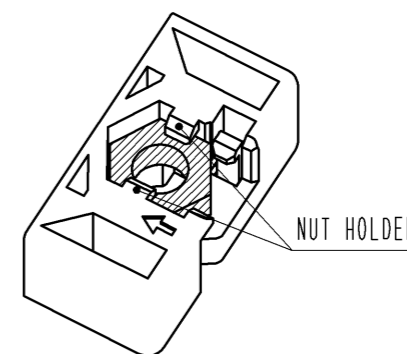
NUT INSTALLATION PROCESS



1. SLIDE A NUT (SIZE:M3) TO NUT FIX PART.

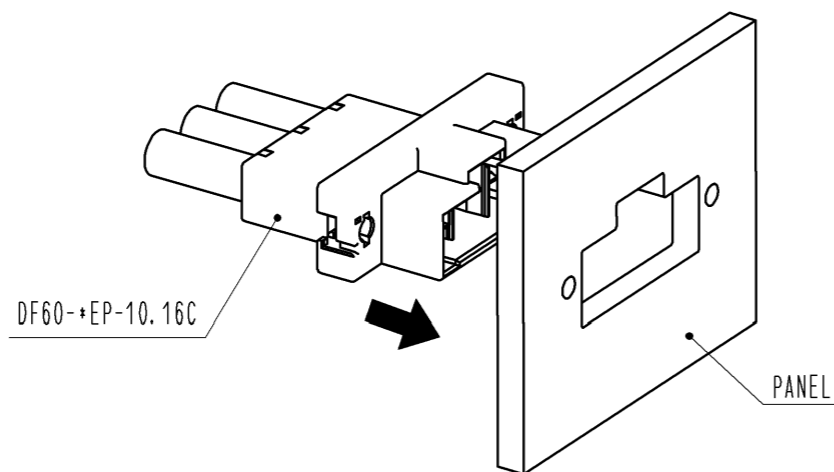


2. PRESS DOWN THE NUT UNTIL IT CLICKS, THEN THIS SOUND MEANS THE NUT HAS INSERTED INTO NUT HOLDER.

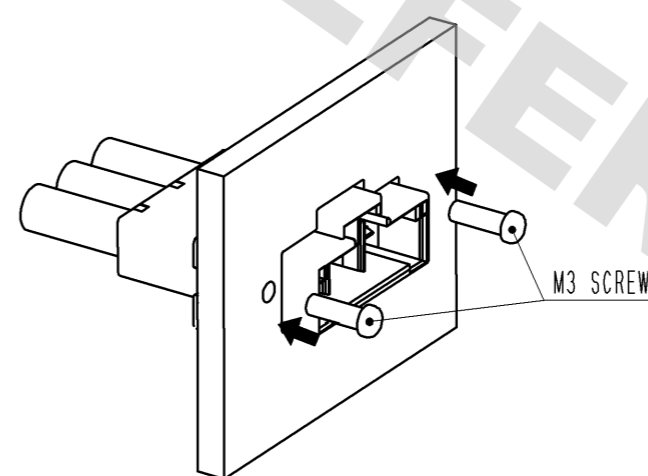


PANEL MOUNTING PROCESS

1. INSERT CONNECTOR INTO PANEL CUT OUT PART.



2. TIGHTEN A SCREW (SIZE:M3) TO FIX WITH PANEL. RECOMMENDED TORQUE : LESS THAN 49N · cm



HRS

DRAWING NO.	EDC3-344822-01
PART NO.	DF60-3EP-10.16C
CODE NO.	CL680-3026-8-00

2/2