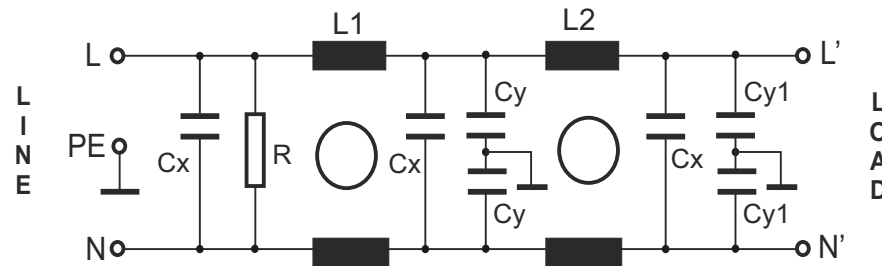


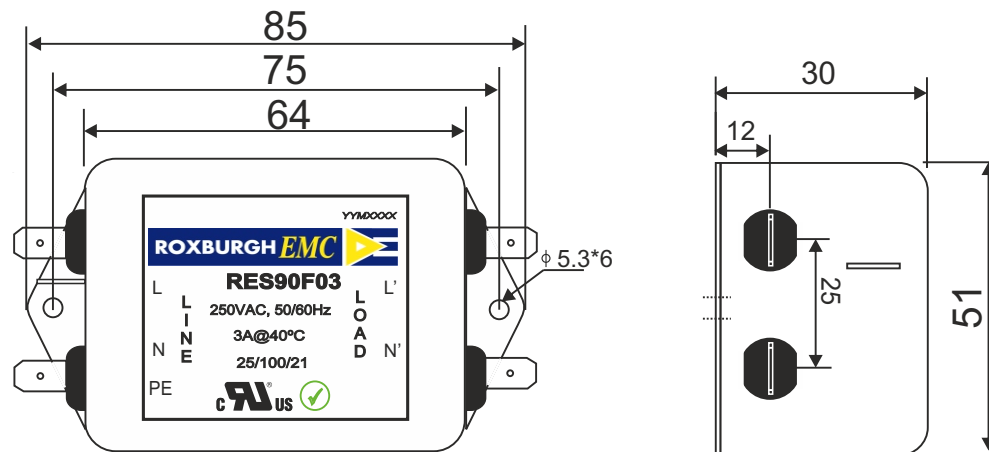
RES90F03		Rev. 0
CHARACTERISTICS:		
Rated Voltage:	250VAC max	
Rated Current at Ambient:	3A @ 40°C	
Operating Frequency:	DC-60HZ	
Climatic Class (IEC60068-1):	25/100/21	
Temperature Range:	-25°C to +100°C	
Over load Current:	1.5 x Rated Ct. for 1 Min	
Operational Leakage current : (at 230VAC and Total C +/-20%)	0.5 mA max	
Worst case Leakage current : (N interrupted and Total C +/-20%)	<1.0 mA max	
DCR @ 25°C (+/-25%) :	250 mΩ	
Test Volatge (100%) for 2 sec:-	P-P:	1100VDC
	P-GND:	3000VDC
Ingress Protection:	IP 20	
Weight (approximate):	200 gr	
FILTER PARAMETERS:		
Total Inductance (P-P'+N-N') @10KHz:	28mH +50%,-30%	
Total Capacitance (P-P/P-N) @1KHz:	0.99μF +/- -20%	
Total Capacitance (P/N-GND) @1KHz:	6.4nF +/- -20%	
Total Resistance (P-P/P-N):	470K Ω +/- -10%	
Total Resistance (P/N-GND):		
APPROVALS: REACH RoHS UL	APPROVED BY AJAY Date: 25-03-2014	



CIRCUIT DIAGRAM:



MECHANICAL DIMENSION (mm):



Note:

Housing matl. Fe with Ni Plated
Fast-On Terminal (6.38 x 0.8mm)
Connections

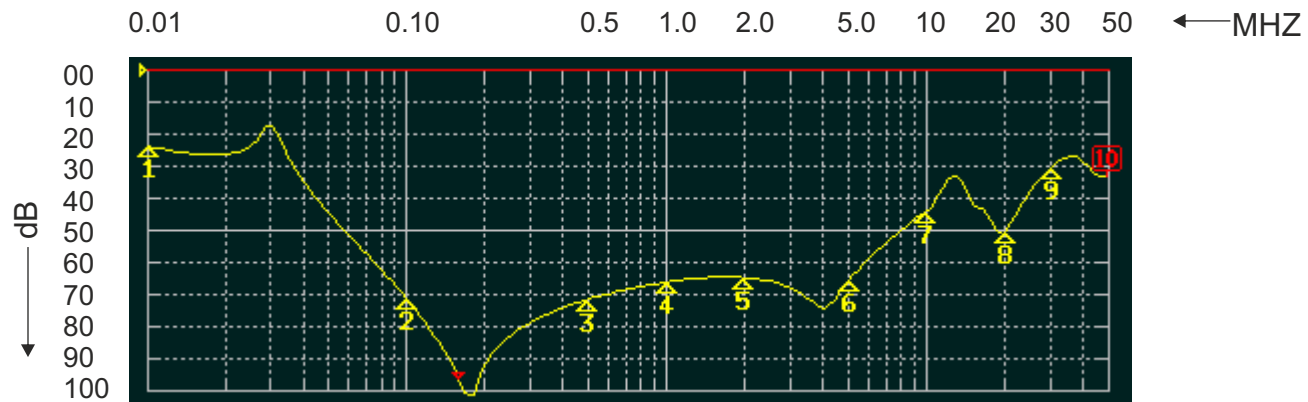
TOLERANCE: +/-1.0 mm



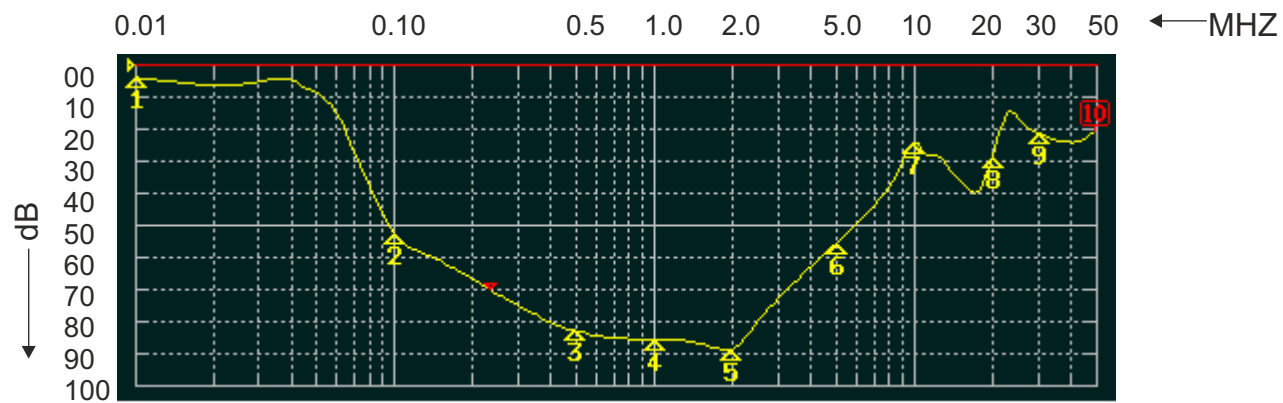
ROXBURGH EMC

FILTER INSERTION LOSS CHARACTERISTICS CISPR 17 - 50 OHM METHOD

RES90F03



COMMON MODE



DIFFERENTIAL MODE

