

DO NOT SCALE FROM THIS PRINT

DESIGNED & DIMENSIONED IN MILLIMETERS [INCHES]

S2M-1XX-XX-X-D-XX-XX

No OF POSITIONS
 -02,-04, -05, -07, -10, -15, -20, -25, & -30 (PER ROW) AVAILABLE AS STANDARD; OTHER SIZES BETWEEN -05 THRU -50 AVAILABLE AS ASO

LEAD STYLE
 -01: THROUGH HOLE (USE C-56-01-X)
 -02: SURFACE MOUNT (USE C-56-05-X)

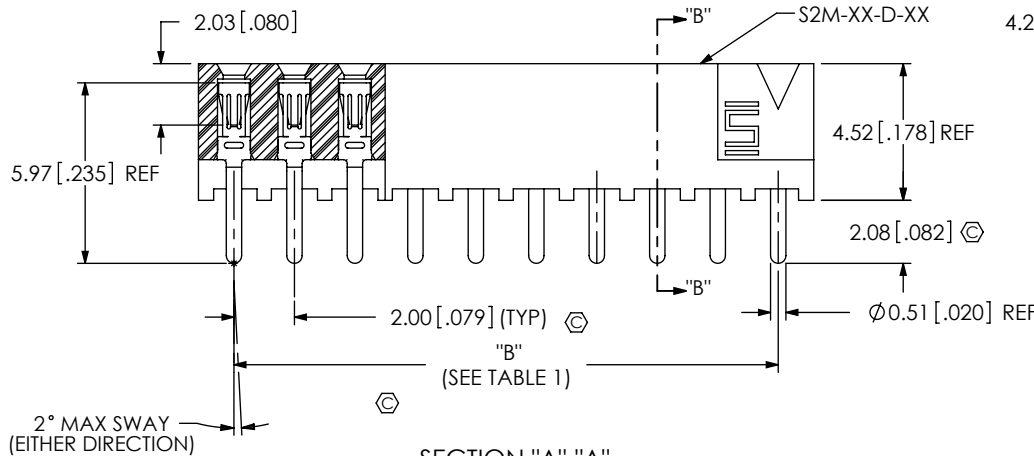
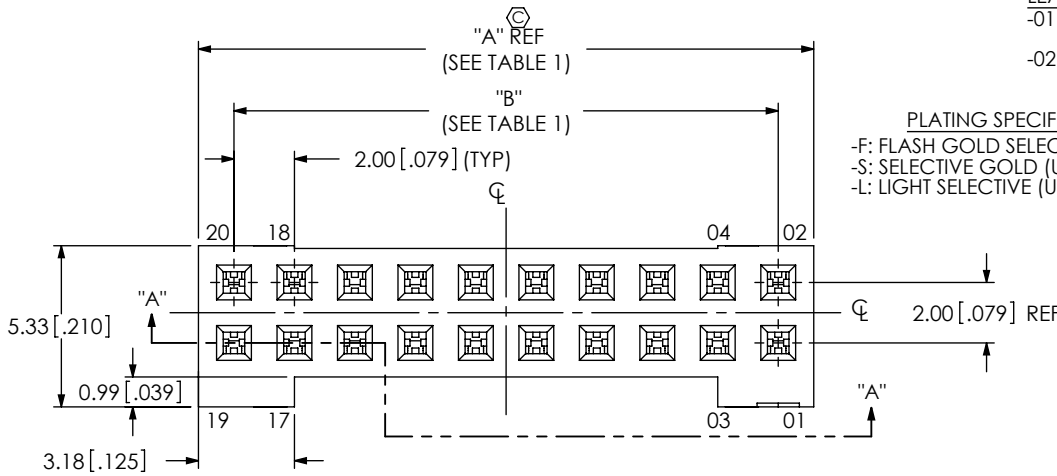
PLATING SPECIFICATION
 -F: FLASH GOLD SELECTIVE (USE C-56-XX-F)
 -S: SELECTIVE GOLD (USE C-56-XX-S)
 -L: LIGHT SELECTIVE (USE C-56-XX-L)

PACKAGING
 -TR: TAPE & REEL (-02 LEAD ONLY)

OPTION
 -K: POLYIMIDE FILM PAD (USE K-500-300) (-02 LEAD ONLY)
 -LC: LOCKING CLIP (USE LC-07-TM)
 *-DS: DUAL SCREW DOWN (SEE FIG 4 & 5 SHT 3) (NOT AVAILABLE WITH -LC OPTION) (USES S2M-XX-D-DS, CPS-RR-XX-XX-X, ACCRT-01 AND WT-27-XX-T ALWAYS FILLED) (ONLY AVAILABLE -05 THRU -40 POSITIONS)

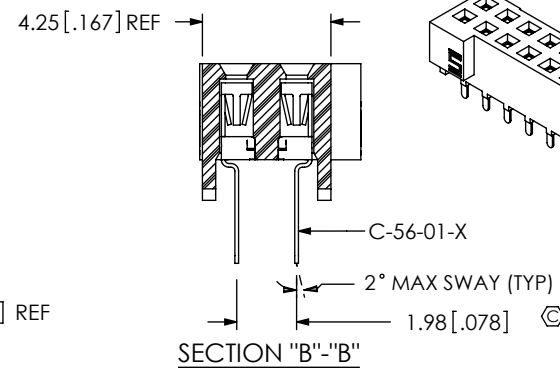
ROW SPECIFICATION
 -D: DOUBLE ROW

(* = NOT RELEASED FOR PRODUCTION)
 (** = MUST CHOOSE TAPE & REEL PACKAGING)

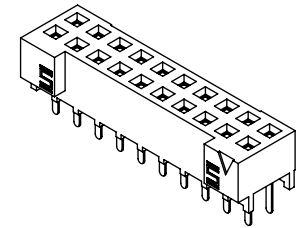


SECTION "A"- "A"

FIG 1
 S2M-110-0T-XX-D SHOWN



SECTION "B"- "B"



NOTES:

1. (C) REPRESENTS A CRITICAL DIMENSION.
2. MINIMUM CONTACT, ACCRT AND WT RETENTION FORCE: 4.45 N [1.000 LB.].
3. "-LC" OPTION FOR A -02 POSITION WILL HAVE ONLY ONE LOCKING CLIP (LC-07-X).
4. MINIMUM RETENTION FOR LOCKING CLIP, WELD TAB & ACCRT: 3.3 N [.75 LB.].

TABLE 1							
No OF POSITIONS	"A" REF	"B"	"C"	"D"	"E"	"F"	"G"
-02	4.35 [.171]	2.00 [.079]	N/A	12.29 [.484]	18.38 [.724]	6.00 [.236]	N/A
-04	8.35 [.329]	6.00 [.236]	4.00 [.157]	16.29 [.641]	22.38 [.881]	10.00 [.394]	1.43 [.056]
-05	10.35 [.407]	8.00 [.315]	6.00 [.236]	18.29 [.720]	24.38 [.960]	12.00 [.472]	2.43 [.095]
-07	14.35 [.565]	12.00 [.472]	10.00 [.394]	22.29 [.878]	28.38 [1.117]	16.00 [.630]	4.43 [.174]
-10	20.35 [.801]	18.00 [.709]	16.00 [.630]	28.29 [1.114]	34.38 [1.354]	22.00 [.866]	7.43 [.293]
-15	30.35 [1.195]	28.00 [1.102]	26.00 [1.236]	38.29 [1.507]	44.38 [1.747]	32.00 [1.260]	12.43 [.489]
-20	40.35 [1.589]	38.00 [1.496]	36.00 [1.417]	48.29 [1.901]	54.38 [2.141]	42.00 [1.654]	17.43 [.686]
-25	50.35 [1.982]	48.00 [1.900]	46.00 [1.811]	58.29 [2.295]	64.38 [2.535]	52.00 [2.047]	22.43 [.883]
-30	60.35 [2.376]	58.00 [2.283]	56.008 [2.205]	68.29 [2.689]	74.38 [2.928]	62.00 [2.441]	27.43 [1.080]

UNLESS OTHERWISE SPECIFIED, DIMENSIONS ARE IN MILLIMETERS. TOLERANCES ARE:
 DECIMALS ANGLES
 X.X: ±0.3[.01]
 X.XX: ±0.13[.005]
 X.XXX: ±0.051[.0020]

PROPRIETARY NOTE
 THIS DOCUMENT CONTAINS INFORMATION CONFIDENTIAL AND PROPRIETARY TO SAMTEC, INC. AND SHALL NOT BE REPRODUCED OR TRANSFERRED TO OTHER DOCUMENTS OR DISCLOSED TO OTHERS OR USED FOR ANY PURPOSE OTHER THAN THAT WHICH IT WAS OBTAINED WITHOUT THE EXPRESSED WRITTEN CONSENT OF SAMTEC, INC.



520 PARK EAST BLVD, NEW ALBANY, IN 47150
 PHONE: 812-944-6733 FAX: 812-948-5047
 e-Mail: info@SAMTEC.com code: 55322

MATERIAL: DO NOT SCALE DRAWING SHEET SCALE: 4:1
 LCP COLOR: BLACK
 CONTACT: BeCu

DESCRIPTION:
 2mm DOUBLE ROW SOCKET STRIP

DWG. NO. S2M-1XX-XX-X-D-XX-XX

BY: T NEWTON 09-16-2010 SHEET 1 OF 4

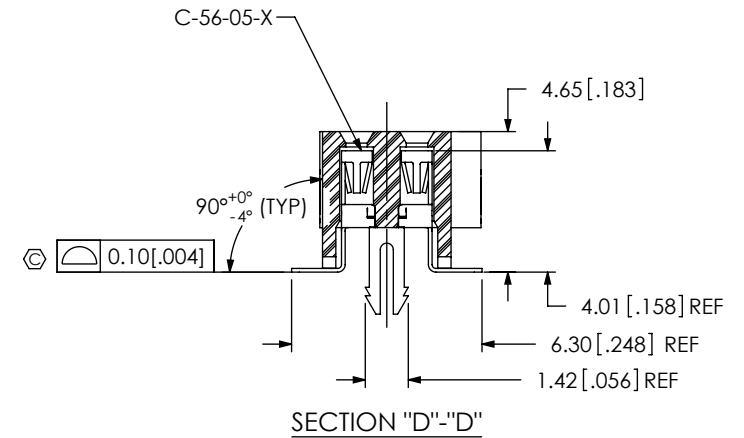
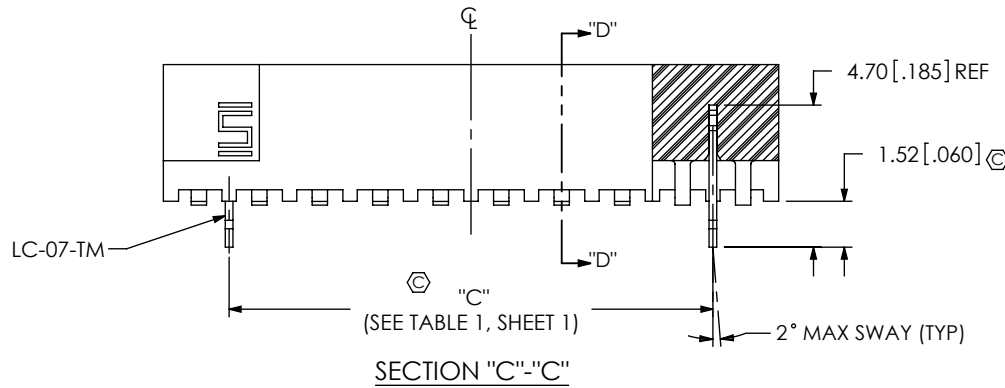
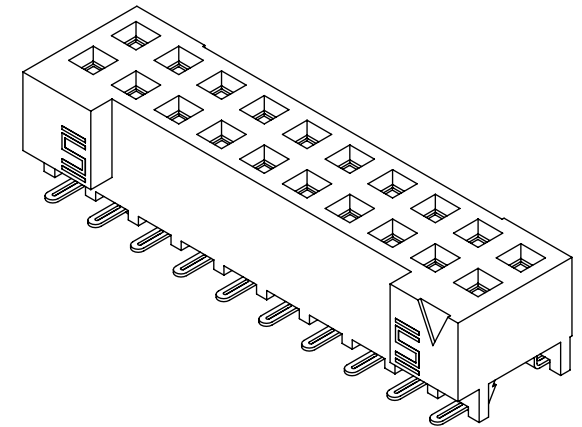
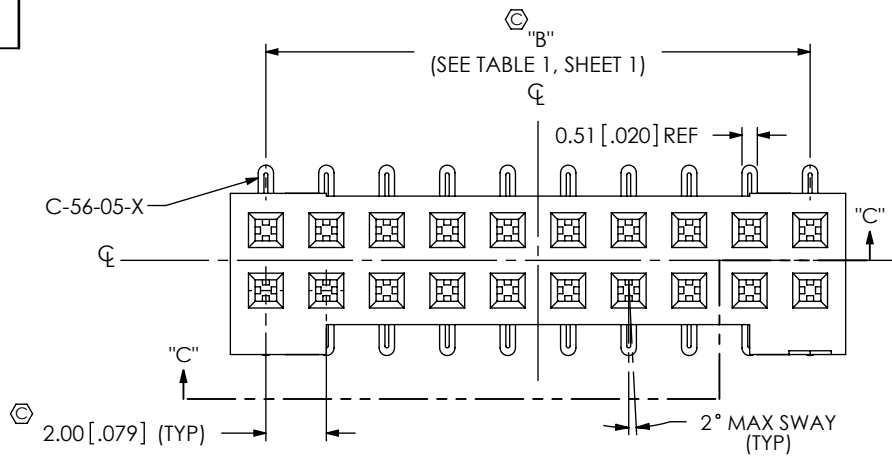


FIG 2
S2M-110-02-X-D-1C SHOWN
(SAME AS FIG 1, EXCEPT AS SHOWN)

F:\DWG\MISC\MKTG\S2M-1XX-XX-X-D-XX-XX-MKT.SLDDRW

PROPRIETARY NOTE
THIS DOCUMENT CONTAINS INFORMATION CONFIDENTIAL AND PROPRIETARY TO SAMTEC, INC. AND SHALL NOT BE REPRODUCED OR TRANSFERRED TO OTHER DOCUMENTS OR DISCLOSED TO OTHERS OR USED FOR ANY PURPOSE OTHER THAN THAT WHICH IT WAS OBTAINED WITHOUT THE EXPRESSED WRITTEN CONSENT OF SAMTEC, INC.

DO NOT SCALE DRAWING

SHEET SCALE: 4:1

samtec

520 PARK EAST BLVD, NEW ALBANY, IN 47150
PHONE: 812-944-6733 FAX: 812-948-5047
e-Mail: info@SAMTEC.com code: 55322

DESCRIPTION: 2mm DOUBLE ROW SOCKET STRIP

DWG. NO. S2M-1XX-XX-X-D-XX-XX

BY: T NEWTON 09-16-2010 SHEET 2 OF 4

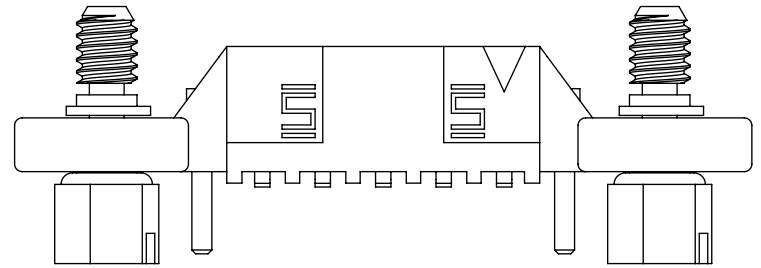
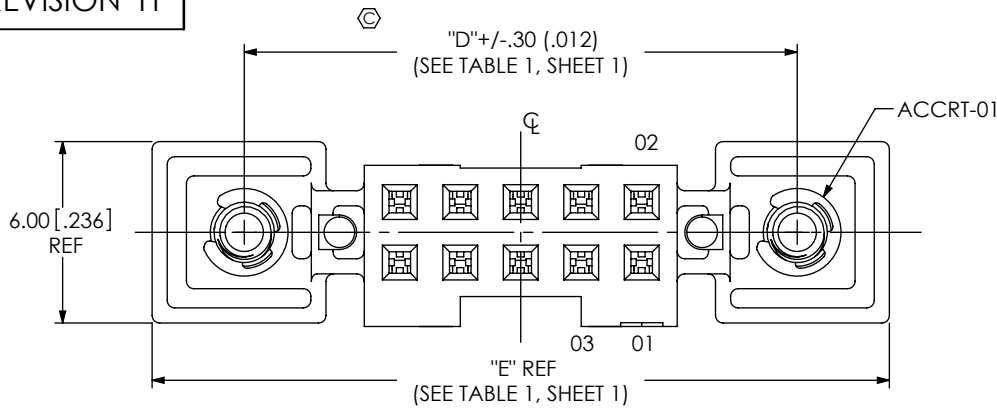


FIG 5
S2M-105-02-X-D-DS SHOWN
(SAME AS FIG 4, EXCEPT AS SHOWN)
(NOT RELEASED FOR PRODUCTION)

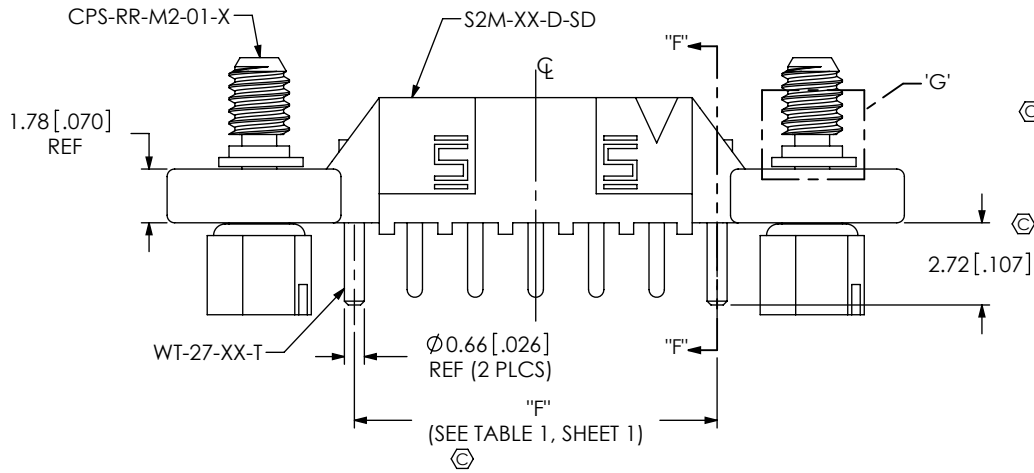
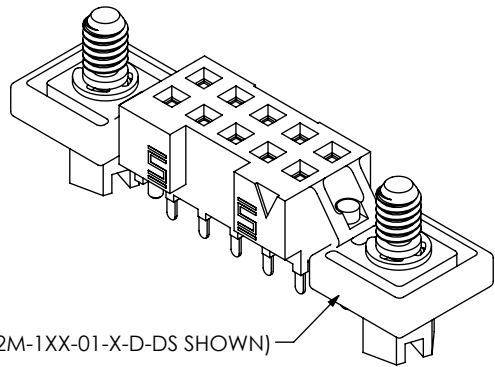
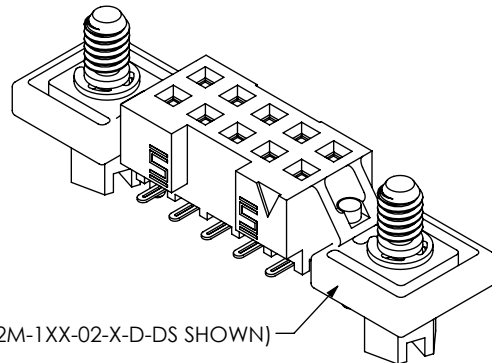


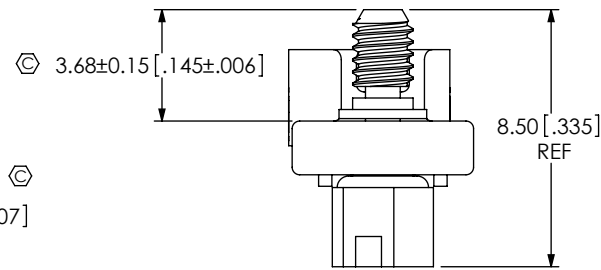
FIG 4
S2M-105-01-X-D-DS SHOWN
(SAME AS FIG 1, EXCEPT AS SHOWN)
(NOT RELEASED FOR PRODUCTION)



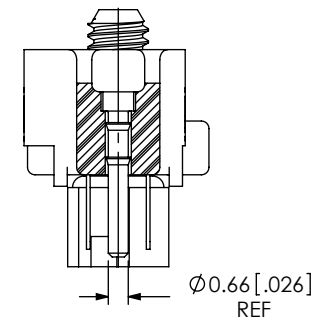
(S2M-1XX-01-X-D-DS SHOWN)



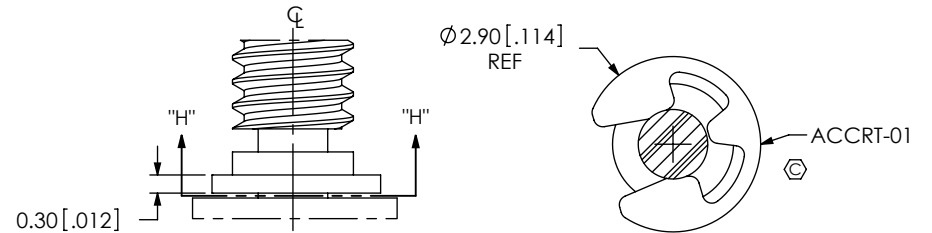
(S2M-1XX-02-X-D-DS SHOWN)



DETAIL 'G'
SCALE 8 : 1



SECTION "F"-"F"



SECTION "H"-"H"
SCALE 8 : 1

PROPRIETARY NOTE
THIS DOCUMENT CONTAINS INFORMATION
CONFIDENTIAL AND PROPRIETARY TO
SAMTEC, INC. AND SHALL NOT BE REPRODUCED
OR TRANSFERRED TO OTHER DOCUMENTS OR
DISCLOSED TO OTHERS OR USED FOR ANY
PURPOSE OTHER THAN THAT WHICH IT WAS
OBTAINED WITHOUT THE EXPRESSED WRITTEN
CONSENT OF SAMTEC, INC.

DO NOT SCALE DRAWING

SHEET SCALE: 4:1

samtec

520 PARK EAST BLVD, NEW ALBANY, IN 47150
PHONE: 812-944-6733 FAX: 812-948-5047
e-Mail: info@SAMTEC.com code: 55322

DESCRIPTION:
2mm DOUBLE ROW SOCKET STRIP

DWG. NO.
S2M-1XX-XX-X-D-XX-XX

BY: T NEWTON 09-16-2010 SHEET 3 OF 4

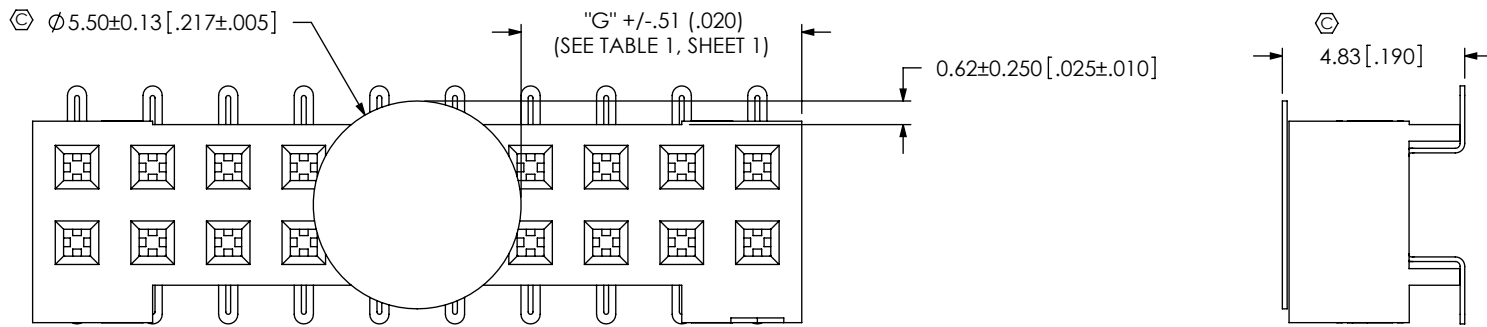
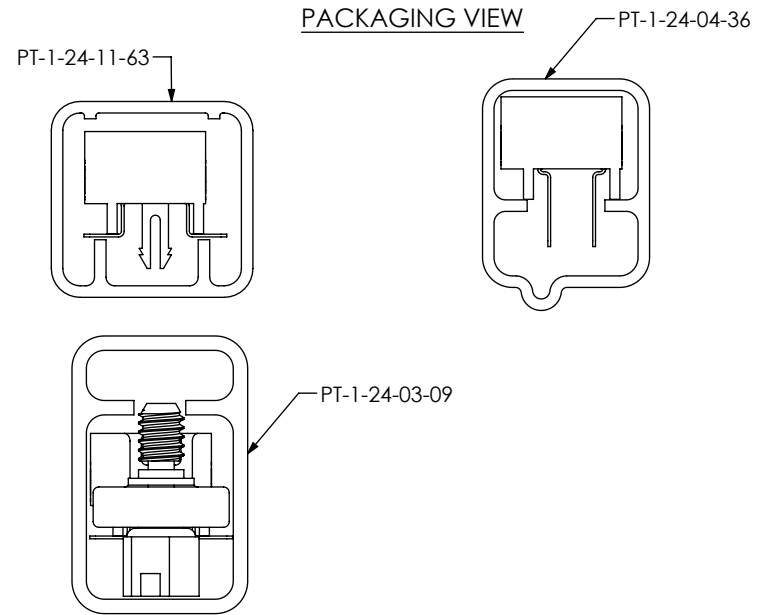
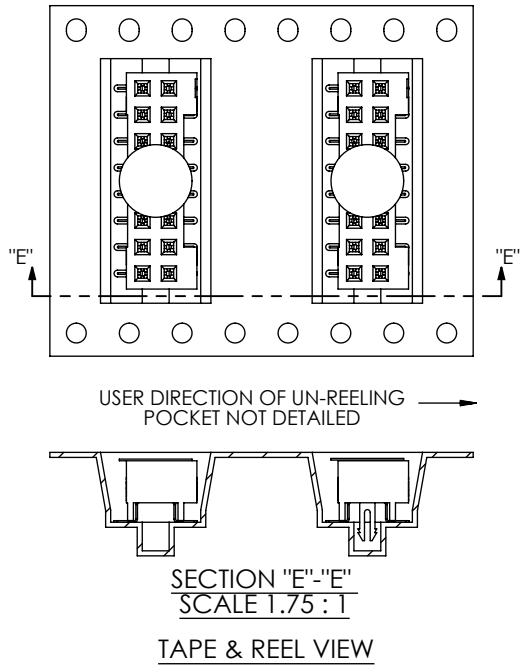


FIG 3
S2M-110-02-X-D-K SHOWN
(SAME AS FIG 2, EXCEPT AS SHOWN)



TUBE TABLE		
LEAD STYLE	TUBE	PLUG
-01	PT-1-24-04-36	TP-09
-02	PT-1-24-11-63	TP-24
-XX-DS	PT-1-24-03-09	TP-03

F:\DWG\MISC\MKTG\S2M-1XX-XX-X-D-XX-XX-MKT.SLDDRW

PROPRIETARY NOTE
THIS DOCUMENT CONTAINS INFORMATION CONFIDENTIAL AND PROPRIETARY TO SAMTEC, INC. AND SHALL NOT BE REPRODUCED OR TRANSFERRED TO OTHER DOCUMENTS OR DISCLOSED TO OTHERS OR USED FOR ANY PURPOSE OTHER THAN THAT WHICH IT WAS OBTAINED WITHOUT THE EXPRESSED WRITTEN CONSENT OF SAMTEC, INC.

DO NOT SCALE DRAWING

SHEET SCALE: 4:1



520 PARK EAST BLVD, NEW ALBANY, IN 47150
PHONE: 812-944-6733 FAX: 812-948-5047
e-Mail: info@SAMTEC.com code: 55322

DESCRIPTION:
2mm DOUBLE ROW SOCKET STRIP

DWG. NO.
S2M-1XX-XX-X-D-XX-XX

BY: T NEWTON 09-16-2010 SHEET 4 OF 4