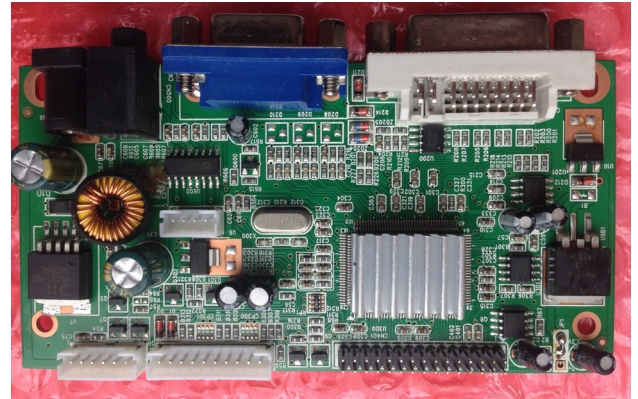


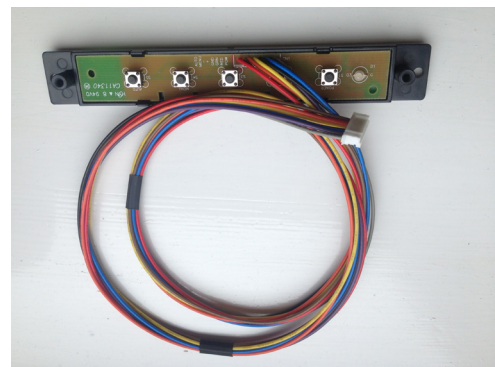
AM 800480R3TMQW Getting Started Guide

Box Contents

1 x Driver Card

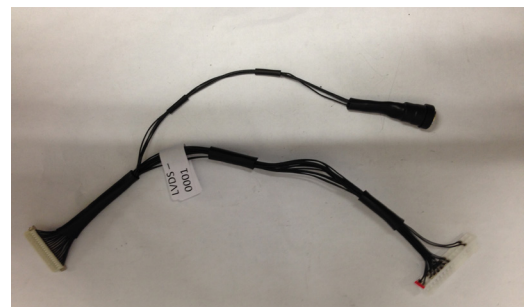


1 x On-Screen-Display Cable (OSD)



1 x LCD LVDS Cable

Labelled LVDS-0001

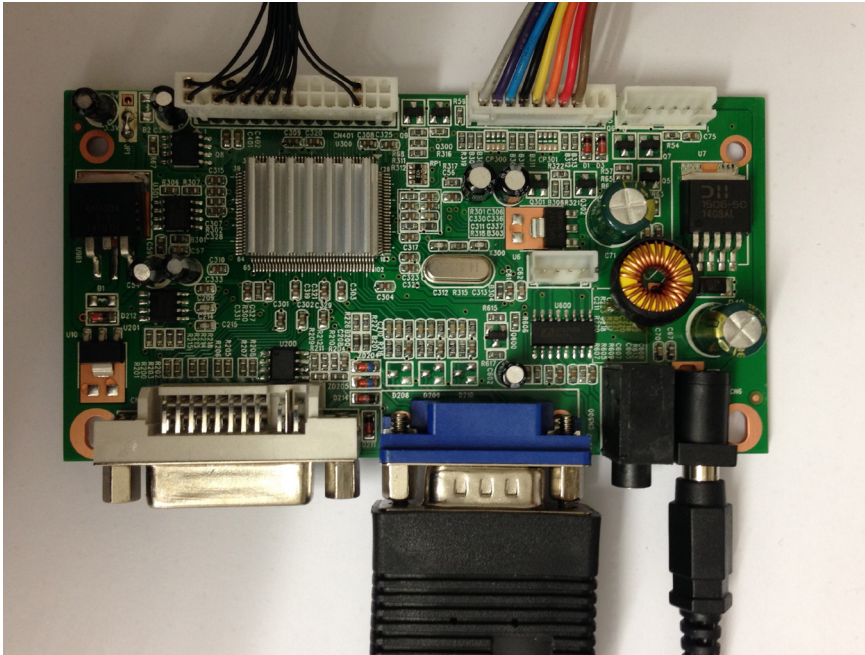


Also required but not included in the kit

Item	Description	Suitable RS Part No.
Driver Card Power Supply	12V DC 500mA with 2.5mm DC Jack Positive Pin	721-0920
LCD Backlight power supply	12V DC 500mA with 2.5mm DC Jack Positive Pin	721-0920
VGA Lead	Standard VGA lead to suit application	-

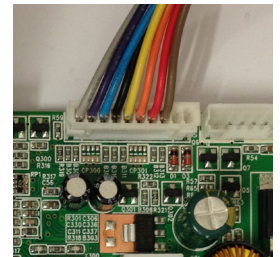
Connecting the Kit

Picture 1 - Connected Driver Card



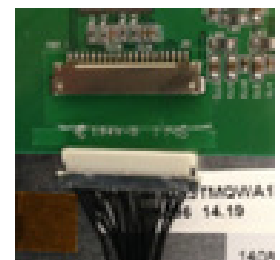
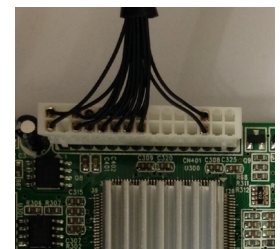
1 Connect the On screen Display cable into the Driver card

- On the driver card Locate the white 10 way header marked CN300 with a blue stripe
- Insert the 10 way connector on the OSD cable ensuring the blue stripe lines up



2 Connect the LVDS cable

- On the LVDS cable, locate the white 30 way connector with the red stripe.
- Insert the connector into the black 30 way header on the driver card ensuring the red stripes line up
- On the LVDS cable, locate the 20 way LCD connector with the silver stripe on one face
- Insert the connector into the LCD ensuring the silver stripe is facing away from the display



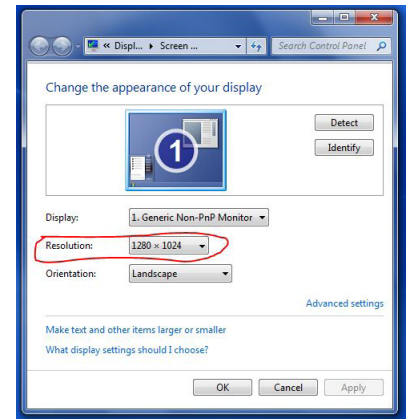
3 Connect the power supplies

- Connect the first 12V power supply to the driver card using the 2.5mm centre positive connector
- Connect the second 12V power supply to the back light connector on the LVDS cable



4 Connect the VGA connector

- Configure a PC to output a display resolution of 800x480 pixels by right clicking on the background and following the menus.
- Connect the VGA lead to the blue VGA input connector on the driver card.



5 Power up

- Turn on both power supplies
- The display should turn on and be crisp and bright

6 Adjust the display using the OSD

- Press "menu" button on the OSD panel.
- Use the "up" and "down" buttons to adjust the display as required
- Use the "auto" button to automatically adjust the display to new resolutions
- Use the "power" button to turn the display on or off

