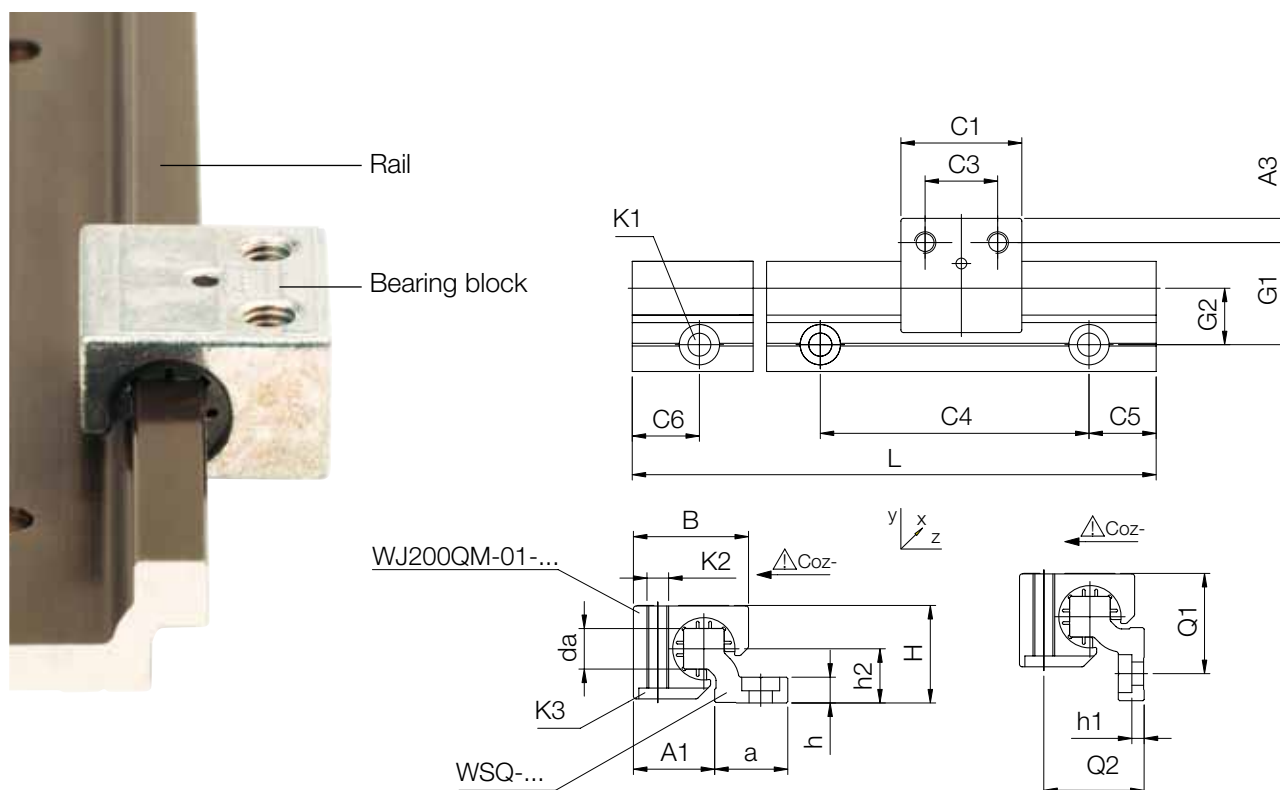


Single rail and housing bearing, square



Order key
complete ► page 785



Illustrated rails may vary in color due to the technical coating!

DryLin® W Guide Rails, Square – Load Data and Dimensions [mm]

Part number	Weight [kg/m]	H	da	L	a	h	h1	h2	G1	G2	A1	Q1	Q2
		±0.07	-0.1	max.	-0.3								
WSQ-06	0.23	14	5	3,000	14	4	4*	7.5	18	10.5	13.5	17	15
WSQ-10	0.54	20	7.5	4,000	25	5.5	5.5*	11	27	17	18.5	26	21
WSQ-16	0.94	27	11.5	4,000	27	7.5	3.5	14	33	19	25	32	28
WSQ-20	1.41	36	15	4,000	27	9.5	4.5	20	38	21	30	37	37

Part number	C4	C5 min.	C5 max.	C6 min.	C6 max.	K1 for Screw DIN 912	ly	lz	Wby	Wbz
							[mm²]	[mm²]	[mm³]	[mm³]
WSQ-06	60	20	49.5	20	49.5	M4*	2,200	640	220	100
WSQ-10	120	20	79.5	20	79.5	M6*	16,100	3,300	950	350
WSQ-16	120	20	79.5	20	79.5	M8	33,000	10,800	1,700	910
WSQ-20	120	20	79.5	20	79.5	M8	56,500	34,000	2,600	2,100

Standard bore pattern symmetrical: C5 = C6; please order C5 ≠ C6 with drawing

* Trough bore



delivery available
time from stock



prices price list online
www.igus.co.uk/en/DryLinW



order part number
example WSQ-06

DryLin® W Modular Guide Systems | Product Range

Single rail and housing bearing, square



Order key
complete ► page 785



All parts can be ordered individually
or as an assembled system

DryLin® W Housing Bearings, Square – Load Data and Dimensions [mm]

Part number	Floating bearing play	Floating bearing direction	Weight [g]	B	C1	C3	A3	K2	K3	Stat. Load Capac.		
										Coy [N]	Coz+ [N]	Coz- [N]
WJ200QM-01-06	–	–	16	18	19	10	4.5	M4	M3	420	420	140
WJ200QM-01-06-LLZ	± 0,5	z	16	18	19	10	4.5	M4	M3	420	420	140
WJ200QM-01-06-LLY	± 0,5	y	16	18	19	10	4.5	M4	M3	420	420	140
WJ200QM-01-10	–	–	41	26	29	16	6.5	M6	M5	1,200	1,200	250
WJ200QM-01-10-LLZ	± 0,7	z	41	26	29	16	6.5	M6	M5	1,200	1,200	250
WJ200QM-01-10-LLY	± 0,7	y	41	26	29	16	6.5	M6	M5	1,200	1,200	250
WJ200QM-01-16	–	–	100	34.5	36	18	9	M8	M6	2,100	2,100	400
WJ200QM-01-16-LLZ	± 1,0	z	100	34.5	36	18	9	M8	M6	2,100	2,100	400
WJ200QM-01-16-LLY	± 1,0	y	100	34.5	36	18	9	M8	M6	2,100	2,100	400
WJ200QM-01-20	–	–	190	42.5	45	27	9	M8	M6	3,200	3,200	500
WJ200QM-01-20-LLZ	± 1,0	z	190	42.5	45	27	9	M8	M6	3,200	3,200	500
WJ200QM-01-20-LLY	± 1,0	y	190	42.5	45	27	9	M8	M6	3,200	3,200	500

Order example: WJ200QM-01-06 for a housing bearing, square
WJ200QM-01-06-LLZ for a housing bearing, square with floating z-direction



delivery available
time from stock



prices price list online
www.igus.co.uk/en/DryLinW

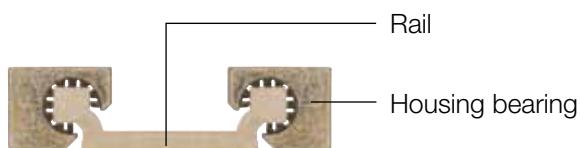
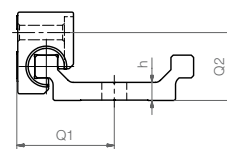
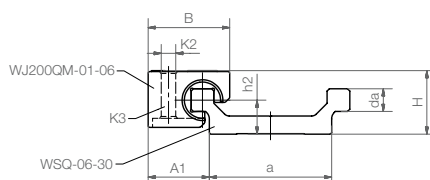
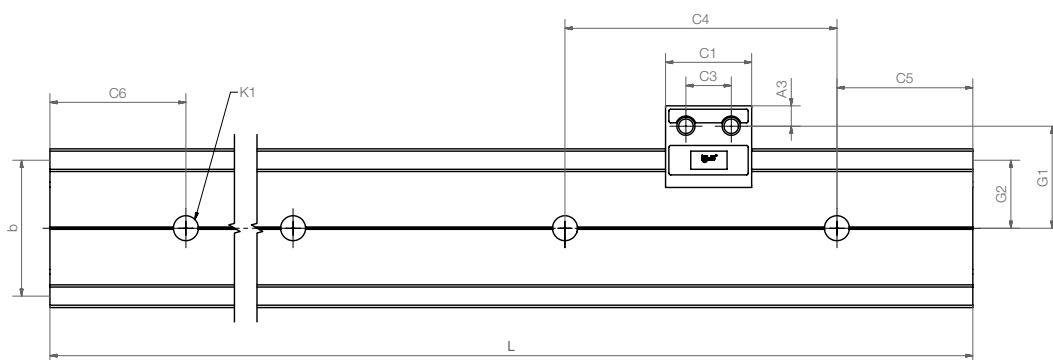


order part number
example WSQ-06-guide rail,
square;
WJ200QM-01-06-
housing bearing, square

Double rail and housing bearing, square



Order key complete ▶ page 785



DryLin® W Guide Rails – Dimensions [mm]

Part number	Weight [kg/m]	H ±0.07	da -0.1	di	L max.	a -0.3	b	h	h1	h2	G1	G2	a1*
WSQ-06-30	0.45	14	5	-	3,000	27	30	4	4	7.5	22.5	10.5	-

Part number	C4	C5		C6		K1 for Screw DIN 912	ly [mm ⁴]	lz [mm ⁴]	Wby [mm ³]	Wbz [mm ³]
		min.	max.	min.	max.					
WSQ-06-30	60	20	49.5	20	49.5	M5***	19,000	1250	1,100	200

Standard bore pattern symmetrical: C5 = C6; please order C5 ≠ C6 with drawing

** Trough bore

Load Data and Dimensions [mm] – DryLin® W Housing Bearing – Square

Part number	Weight [g]	B	C1	C3	A3	K2	K3	Stat. Load Capac.		
								Co _y [N]	Co _z ⁺ [N]	Co _z ⁻ [N]
WJ200QM-01-06	16	18	19	10	4.5	M4	M3	420	420	140



delivery available from stock



prices price list online
www.igus.co.uk/en/DryLinW

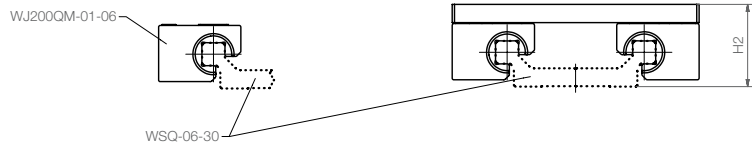
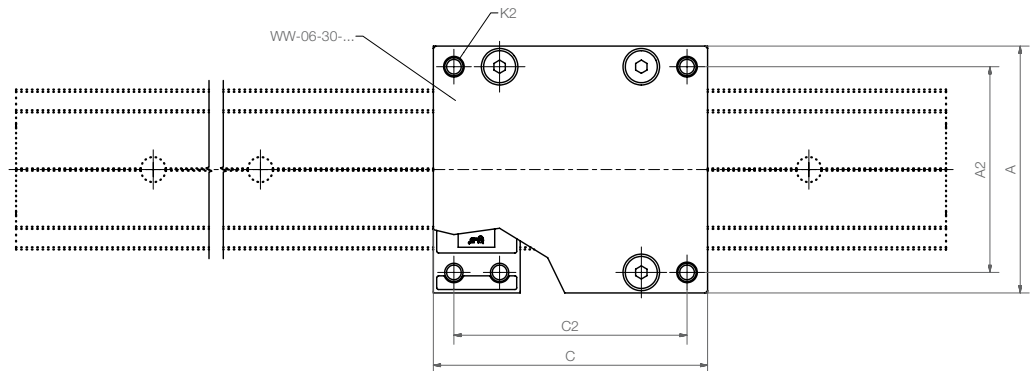


order part number
example WSQ-06-30

Guide carriage, fitted, square



Order key
complete ▶ page 785



DryLin® W Guide Carriage – Load Data and Dimensions [mm]

Part number	Part number Suitable Rail	Weight [kg]	A Wide	C Length	A2	C2	K2	H2 ±0.17	Stat. Load Capacity				
									Coy [N]	Coz [N]	Mox [Nm]	Moy [Nm]	Moz [Nm]
WW-06-30-06	WSQ-06-30	0.10	54	60	45	51	M4	18	1,680	840	25	34	34
WW-06-30-08	WSQ-06-30	0.11	54	80	45	71	M4	18	1,680	840	25	51	51
WW-06-30-10	WSQ-06-30	0.12	54	100	45	91	M4	18	1,680	840	25	68	68



delivery available
time from stock



prices price list online
www.igus.co.uk/en/DryLinW



order part number
example WW-06-30-06
WSQ-06-30