
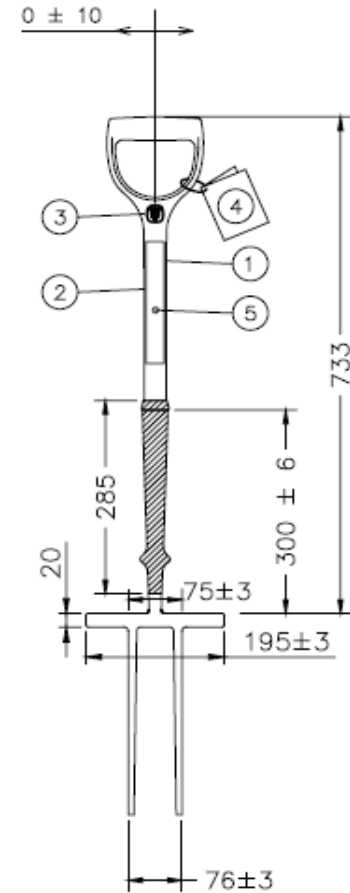


SPECIFICATION SHEET

	Product Code: 2PF/INS	Insulated 2 Pronged Fork with Polyfibre Handle		
Dimensions in millimetres. Untoleranced dimensions are nominal. Drawing for reference only.				

Product must conform to all identified criteria.

	Dimensional Criteria	Specification
1	Head / Finish	Black Textured Powdercoat
2	Blade Length	320 ± 8 mm
3	Blade Width at Mouth	83 ± 5 mm
4	Blade Width at Shoulder	195 ± 3 mm
5	Tine Section at 20 mm from Mouth	9.7 x 6.6 ± 0.5 mm
6	Tine Section at 40 mm from Shoulder	13.8 x 10.9 ± 0.5 mm
7	Tine Dish at Midpoint	17 ± 1 mm
8	Socket Length	300 ± 6 mm
9	Insulation (Two Sleeves)	White Inner, Orange Outer
10	Insulating Rubber Sleeve Length	270 ± 5 mm
11	Handle Colour / Finish	Orange Polyfibre
12	Handle Length inc. Hilt	733 ± 13 mm
13	Handle Diameter	40.0 x 32.0 ± 0.5 mm Tear Drop
14	Handle Alignment	0 ± 10 mm
15	Handle Twist	0 ± 5 mm
16	Hilt Width	137 ± 1 mm
17	Handle / Insulation / Head	Secure
18	Moulded into Front of Hilt	S&J Crown Logo
19	Moulded into Back of Handle	BS8020 2001, 1000V, SPEAR & JACKSON, Unique Identity No.
20	Label on Front of Handle	Spear & Jackson Neverbend Professional Insulated
21	Barcode Label on Handle	5012095078869
22	Date Code Label on Handle	
23	Swing Tag attached to Hilt	Certificate of Conformity with Matching Unique Identity No.
24	Free from	Defects and Rust
25	Overall Assembly Length	1045 ± 20 mm
26	Electrically Tested to BS 8020:2002	Pass
27	Assembled Weight	2.100 ± 0.200 Kg
28	Multi Packed	5 per Bundle
29		
30		



Approved for S&J by Tk / NP	Issue 1; 12 / 09 / 11	Inspection Completed by	Date
--	------------------------------	--------------------------------	-------------