

Time Delay Switches

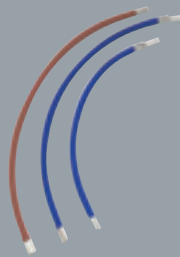
Consumer Unit Cable Kits

Accessories

ONE MODULE



5650s



K5563s



K5565s



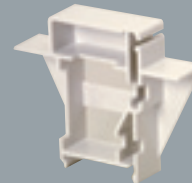
5562s



K8041s



K5593s



5544s



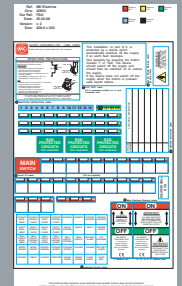
K5545sMAG



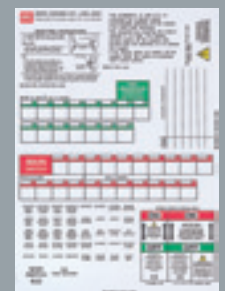
K5511s



KAX26s



K5597s



K5599s

5650s
DELAY RANGE
1 - 7 MINUTES (APPROX)

Suitable for installation in Sentry Consumer Units and two or four module enclosures. Offers time delay control for complete circuits of either tungsten or fluorescent lighting with any number of standard push switches. It can also be used to control fans in bathrooms without a window. Delay setting can be overridden by setting to 'Perm-on' mode, or by fitting a remote overriding switch. Switch has a switching capacity of 16A Resistive loads (upf) Fluorescent lamps uncompensated Series compensated 1300W Parallel compensated 480W CFLS 100W Max. Maximum of 9 units can be connected Incandescent lamps 2000W Neon glow lamp load (locating lamp for Push Switch) 50mA max VOLTAGE RATING: 230V 50Hz DIMENSIONS: 84 x 18 x 70mm CABLE CAPACITY: 1 x 4mm² or 2 x 1.5mm²

1 **K5563s**
SPLIT-LOAD KIT
Consists of 3 cables (2 neutral and 1 live) for use when assembling a split load arrangement.

5 **K5565s**
MULTI-INCOMER KIT
Consists of a blue flexible cable with pre-fitted terminal for the neutral return from switch or RCD to second or third neutral bar.

5 **K5568s**
17th Edition cable kit for switch and twin RCD arrangement

5 **K5567s**
A&D cable kit for switch plus triple RCD arrangement

K5563s
For use when assembling split-load arrangement.

K5565s
For use when assembling a consumer unit in a multi-incomer arrangement with separate supply to each incomer.

These kits must be used to ensure compliance with BS EN 60439-3

5 **5562s**
EXTENSION TERMINAL
For use when assembling a consumer unit as a distribution board. Enables direct connection of cables to the neutral bar. Consists of a 25mm² capacity terminal with clamp screw.

5 **K8041s**
LOCKING DEVICE
For use when locking a Sentry MCB, RCBO, RCD or switch disconnector in either the on or off position.

5 **K5593s**
BARREL LOCK AND KEY KIT
Suitable for securing 'K' series Sentry Consumer Unit lids.

1 **5544s**
MCB BLANK – GREY
Designed to fill unused modules in Sentry Consumer Units and small enclosures. DIN-rail mounted.

10 **K5545sMAG**
COVER MOUNTED BLANK
For filling spaces in the 'K' series Sentry consumer unit cover, where there are unused modules.

1 **K5511s**
BUSBAR
11 module.

1 **K5590s**
BUSBAR
20 module.

1 **KAX26s**
BUSBAR COVER
Suitable for insulating the busbars K5511s and K5590s 20 module.

5 **K5597s**
CONSUMER UNIT LABELS
Additional printed and blank labels, for identifying devices and circuits on Dual & Triple RCD boards

5 **K5599s**
CONSUMER UNIT LABELS
Additional printed and blank labels, for identifying devices and circuits on single RCD boards.

1

1

10