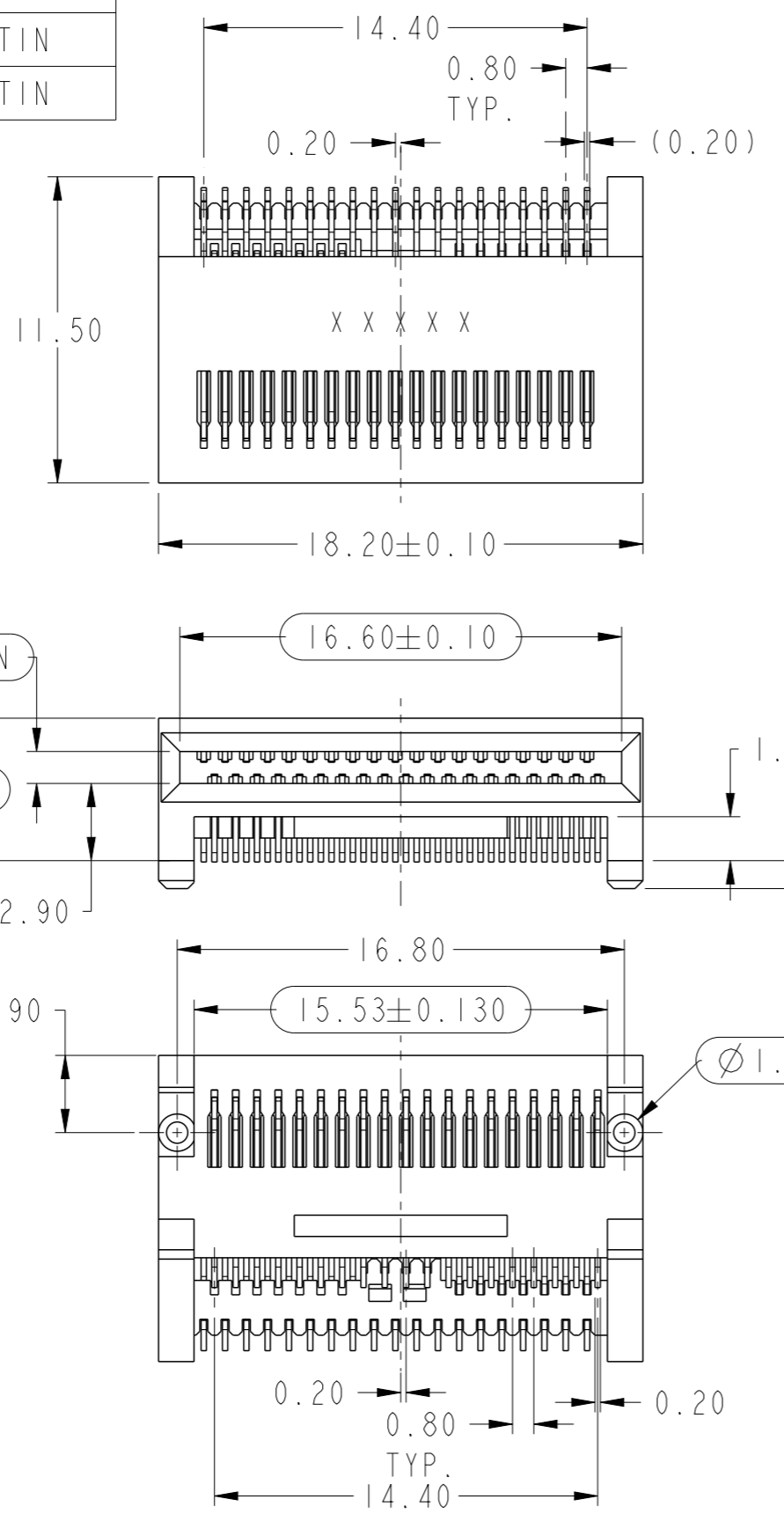


FCI CONFIDENTIAL



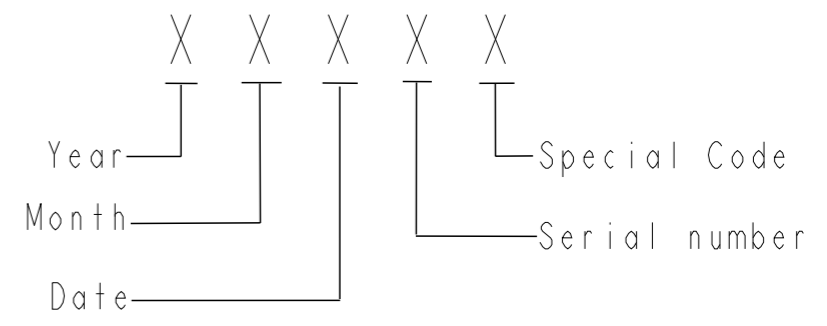
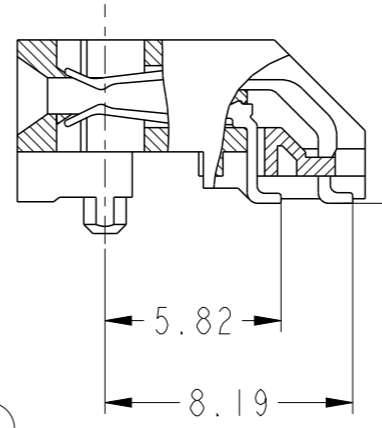
This document is the property of and embodies CONFIDENTIAL and PROPRIETARY information of FCI. No part of the information shown on this document may be used in any way or disclosed to others without the written consent of FCI. Copyright FCI.

PART NUMBER	PLATING
10099113-101LF	SATIN TIN
10099113-102LF	MATTE TIN



NOTES:

- MATERIAL:
HOUSING: THERMOPLASTIC GLASS FILLED.
SPACER: THERMOPLASTIC GLASS FILLED.
CONTACT: COPPER ALLOY
- PLATING:
CONTACT AREA: 0.76um Au OVER 2.54um MIN. NICKEL.
SOLDER AREA: 2.54um MIN. TIN OVER 2.54um MIN. NICKEL.
- PRODUCT SPECIFICATION: GS-12-622
- APPLICATION SPECIFICATION: GS-20-126
- PRODUCT MEETS EUROPEAN UNION DIRECTIVES AND OTHER COUNTRY REGULATIONS AS DESCRIBED IN GS-22-008.
- DATE CODE BE PRINTED ON PROPER SURFACE.



TOLERANCES UNLESS OTHERWISE SPECIFIED		tolerance std	material -	dr	Andy Zhang	2010/11/03	projection	MM	size	A3	scale	4:1		
linear	X.	±	ASME Y14.5	mat code -	eng	Wendy Chen	2011/09/05	⊕	ecn no	ELX-T-005581-1				
	0.X	±0.10	-	heattreat -	chr	-	product family			Released				
	0.XX	±0.05	surface ✓	plating/finish -	appr	Gary Hsieh		2011/09/05	title		QSFP 38POS CONNECTOR	dwg no	10099113C	rev
	0.XXX	±		spec ref -	model name	10099113-101		www.fci.com		cat. no.	-	Product - Customer Drw	sheet 1 of 2	
angular	0°	±2°	ASME Y14.5	model revision	C		STATUS:Released		Printed: Sep 05, 2011					

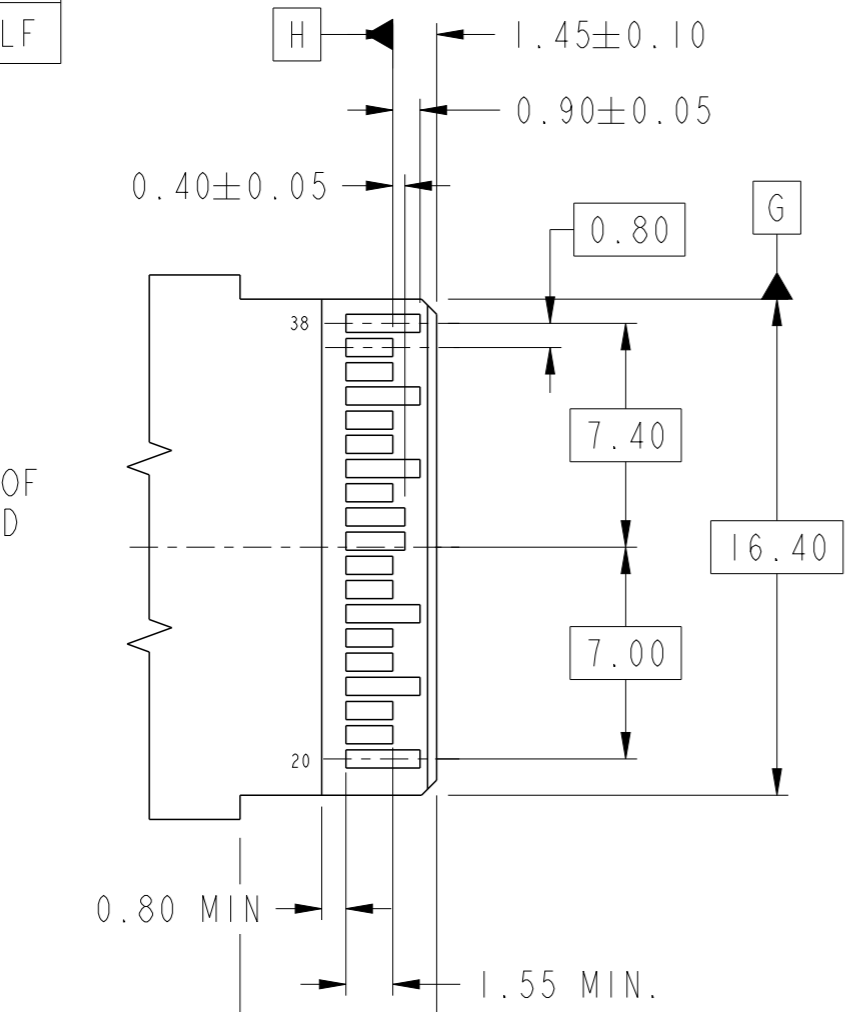
FCI CONFIDENTIAL



This document is the property of and embodies CONFIDENTIAL and PROPRIETARY information of FCI. No part of the information shown on this document may be used in any way or disclosed to others without the written consent of FCI. Copyright FCI.

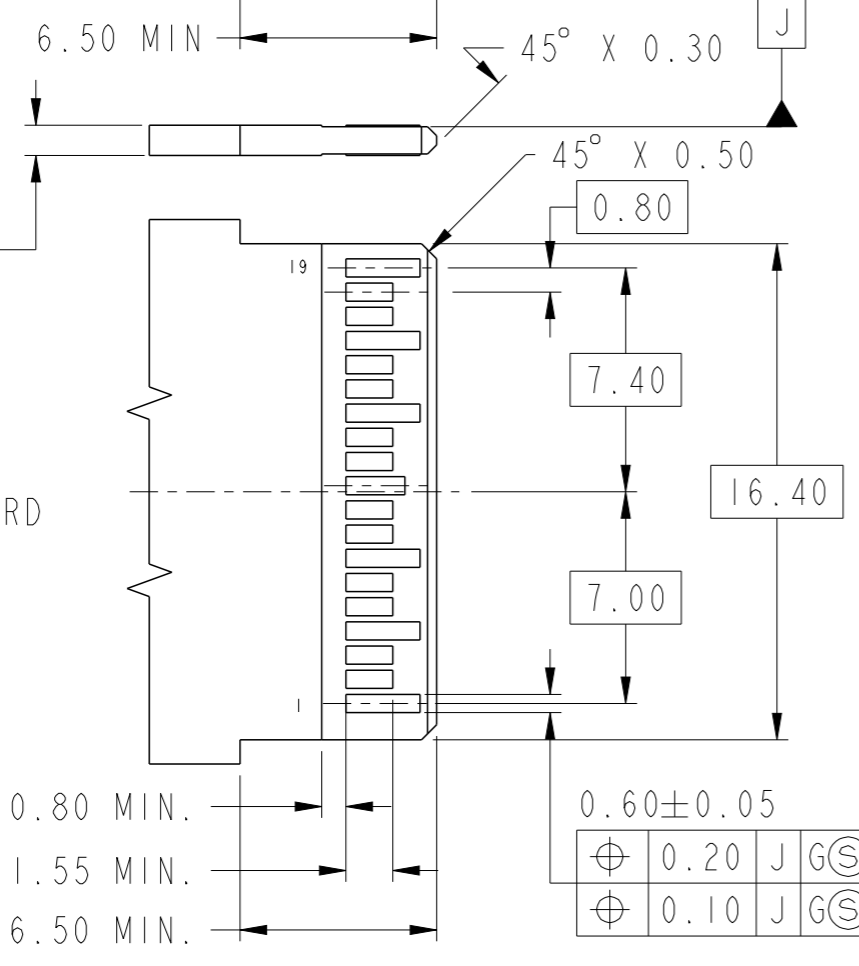
PART NUMBER
10099113-101LF

TOP VIEW OF
PLUG BOARD

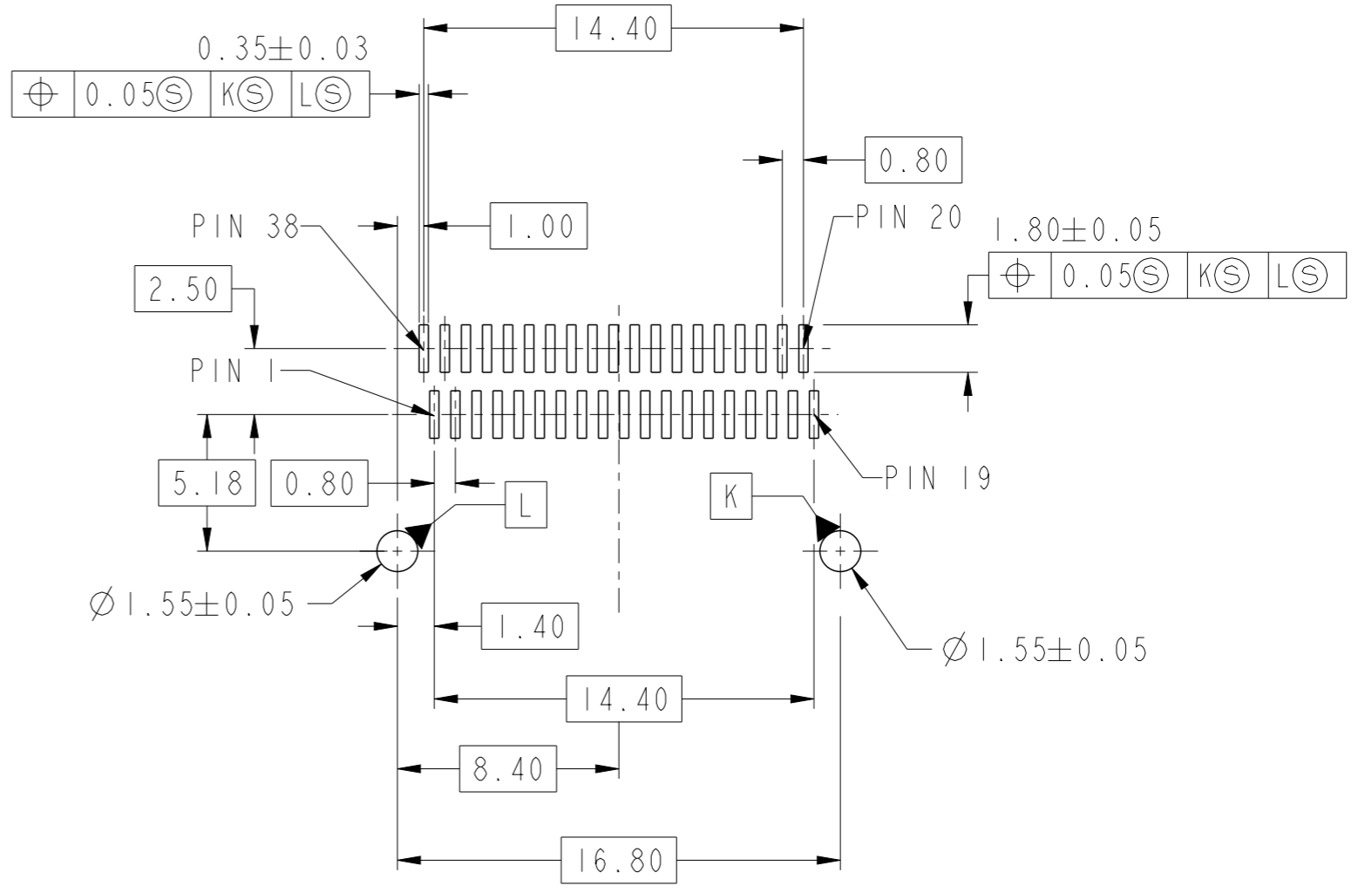


1.00±0.10
OVER PAD

BOTTOM VIEW
OF PLUG BOARD



⊕	0.20	J	GⓈ	H
⊕	0.10	J	GⓈ	



RECOMMENDED PCB LAYOUT
(COMPONENT SIDE)

TOLERANCES UNLESS OTHERWISE SPECIFIED		dr	Andy Zhang	2010/11/03	projection	MM	size	A3	scale	4:1
		eng	Wendy Chen	2011/09/05			ecn no		ELX-T-005581-1	
		chr	-	-			rel level		Released	
linear	x.	±				product family QSFP 38POS CONNECTOR QSFP BOARD CONNECTOR	dwg no		10099113C	
	0.X	±0.10					rev		E	
	0.XX	±0.05								
	0.XXX	±-								
angular	C	±2°	www.fci.com	cat. no.	-	Product - Customer Drw	sheet 2 of 2			