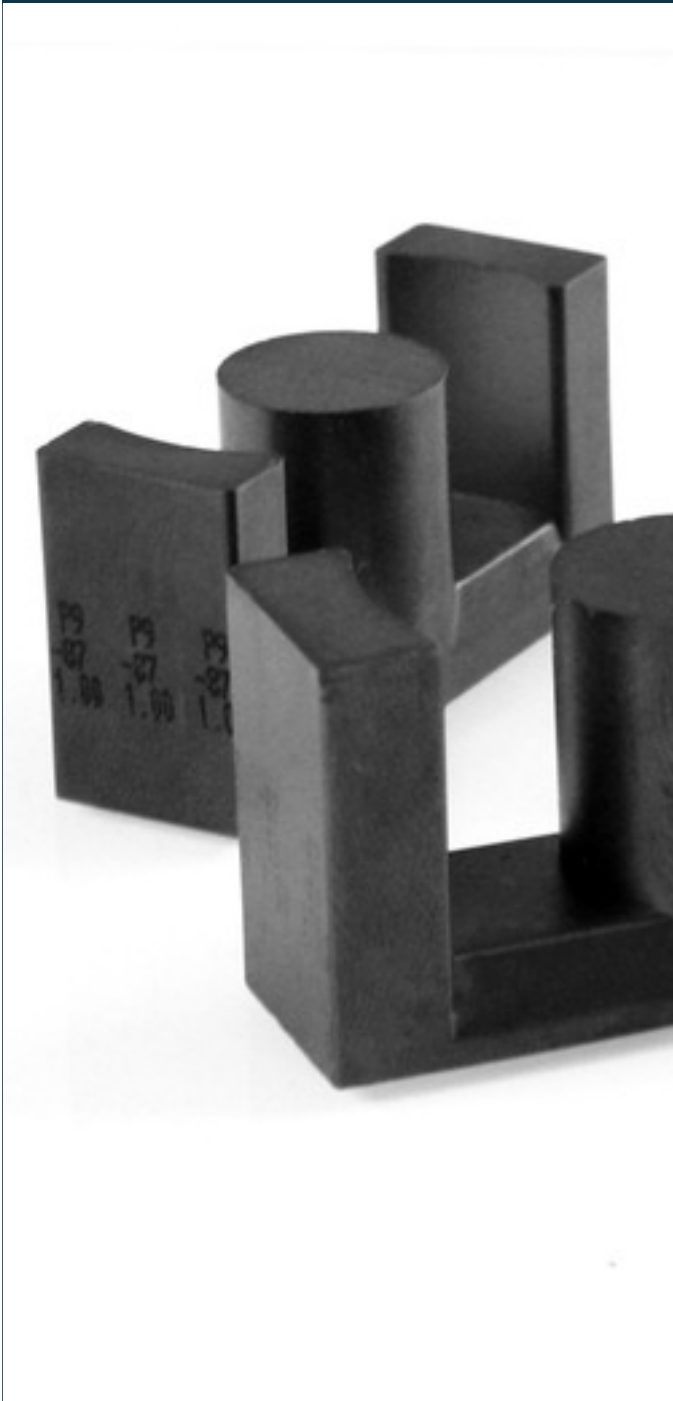


Core  
**FS-1ETD-4916-00**



## Advantages

Insertion of air gaps on request

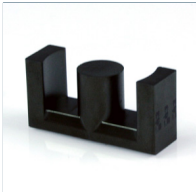
On request wound inductors to EN61558-2-16 standard an EN60950 or vacuum potted

Cost saving and easy compilation of components for pattern construction through unification

## Applications

Transformers and reactors in switch mode power supplies

## Approvals

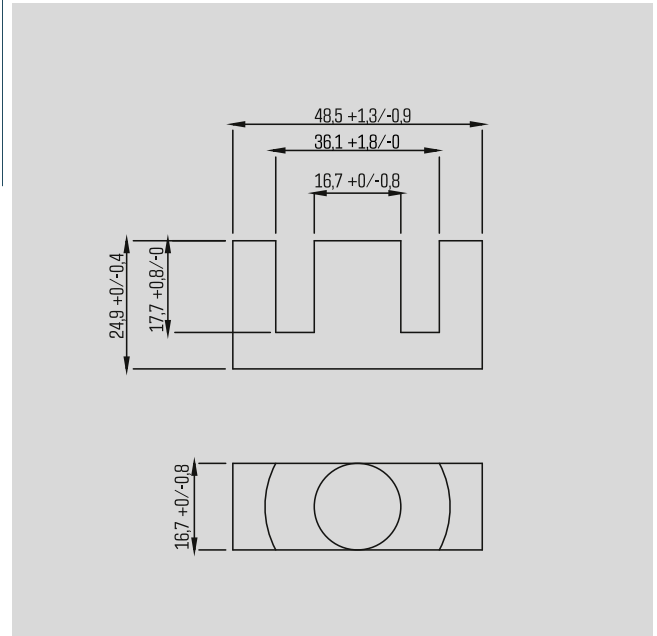


# Core FS-1ETD-4916-00

Type		FS-1ETD-4916-00
Electrical data	General data	
	for housing	FS-1ETD-4916
	Magnetic characteristics	
		>210°C
		<450 kW/m³
		21A/m @25°C
		13A/m @100°C
		>380
	Ae	211.0 mm²
		209.0 mm²
Le	114.0 mm	
	3700 nH ± 25%	
	0 nH ± 10%	
	1730 nH ± 10%	
	1035 nH ± 10%	
	525 nH ± 10%	
	314 nH ± 10%	
	233 nH ± 10%	
	188 nH ± 10%	
	159 nH ± 10%	
Operating data		
		25 kHz - 200 kHz
Notes		
		ISO 2768-m
Order numbers		
<b>Order Number</b>		<b>FS-1ETD-4916-00</b>

Type		FS-1ETD-4916-00
Notes		
Remark		

30 Mechanical data



Subjects to change.