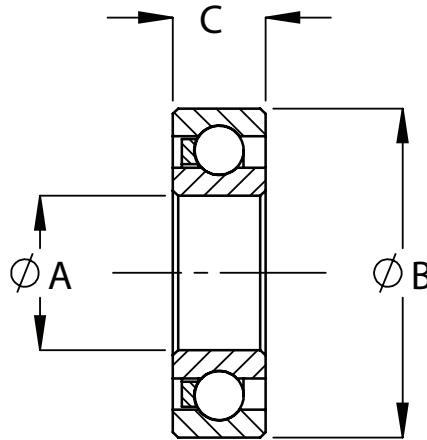
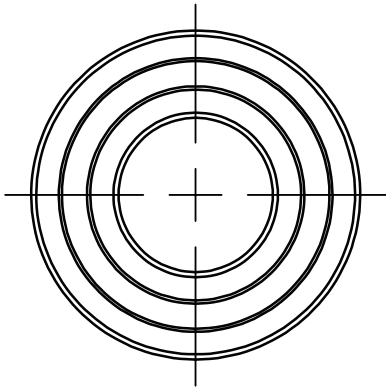


# Radial Bearings (Metric sizes)

Acetal races fitted with stainless steel balls as standard. Please contact us for other material options.

All dimensions are in mm.



BNL Part No.	Ball Size	No. of Balls	A	B	C	Static Load Rating (kg)	Dynamic Load Rating (kg)
CM624	3/32	6	4.00	13.00	5.00	2.50	6.00
CM625	3/32	8	5.00	16.00	5.00	3.00	8.00
CM626	5/32	6	6.00	19.00	6.00	6.50	16.50
CM627	5/32	7	7.00	22.00	7.00	7.50	19.00
CM606	1/8	7	6.00	17.00	6.00	5.00	12.00
CM628	5/32	7	8.00	24.00	8.00	7.50	19.00
CM629	3/16	7	9.00	26.00	8.00	11.00	27.50
CM635	5/32	6	5.00	19.00	6.00	6.50	16.50
CM634	3/32	8	4.00	16.00	5.00	3.00	8.00
CM608	5/32	7	8.00	22.00	7.00	7.50	19.00
CM618\6	1.5mm	8	6.00	13.00	3.50	1.25	3.00
CM607	1/8	8	7.00	19.00	6.00	5.50	14.00
CM618\8	2.0mm	9	8.00	16.00	4.00	2.50	6.00
CM609	5/32	7	9.00	24.00	7.00	7.50	19.00
CM618\9	3/32	9	9.00	17.00	4.00	3.50	8.50
CM6000	5/32	7	10.00	26.00	8.00	7.50	19.00
CM16100	3/16	8	10.00	28.00	8.00	12.50	31.50
CM6200	3/16	8	10.00	30.00	9.00	12.00	30.00
CM6300	3/16	8	10.00	35.00	11.00	12.00	30.00
CM6001	3/16	8	12.00	28.00	8.00	12.50	31.50
CM16101	3/16	8	12.00	30.00	8.00	12.50	31.50
CM6201	3/16	8	12.00	32.00	10.00	12.50	31.50
CM6301	1/4	8	12.00	37.00	12.00	23.00	55.00
CM6002	3/16	8	15.00	32.00	9.00	12.50	31.50
CM6202	1/4	8	15.00	35.00	11.00	23.00	55.00
CM16002	3/16	8	15.00	32.00	8.00	12.50	31.50
CM6003	3/16	9	17.00	35.00	10.00	14.50	35.00
CM6203	1/4	8	17.00	40.00	12.00	23.00	55.00
CM16003	3/16	9	17.00	35.00	8.00	14.50	35.00
CM6004	1/4	9	20.00	42.00	12.00	25.00	63.00
CM6204	5/16	8	20.00	47.00	14.00	35.00	75.00
CM6005	1/4	10	25.00	47.00	12.00	28.00	70.00
CM6205	1/4	10	25.00	52.00	15.00	28.00	65.00
CM16005	1/4	10	25.00	47.00	8.00	28.00	70.00

Contact us now for a competitive quotation: [www.bnl-bearings.com/productquotation](http://www.bnl-bearings.com/productquotation)