

FEATURES AND SPECIFICATIONS

Features and Benefits

- Sizes 6 to 30 circuits
- For 0.30mm thick FFC/FPC

Reference Information

Packaging: Embossed tape
Designed In: Millimeters

Electrical

Voltage: 125V
Current: 1.0A
Contact Resistance: 20mΩ max.
Dielectric Withstanding Voltage: 500V AC/1 min.
Insulation Resistance: 100 MΩ min.

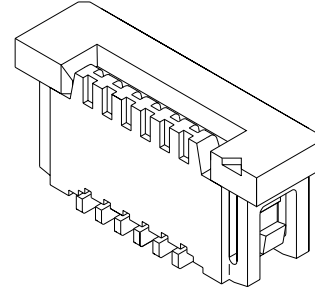
Physical

Housing: 4/6 nylon, UL 94V-0
Actuator: PPS, UL 94V-0
Contact: Phosphor Bronze
Plating: Tin
Temperature: -20 to +85°C

molex® 1.00mm (.039") Pitch FFC/FPC Connector

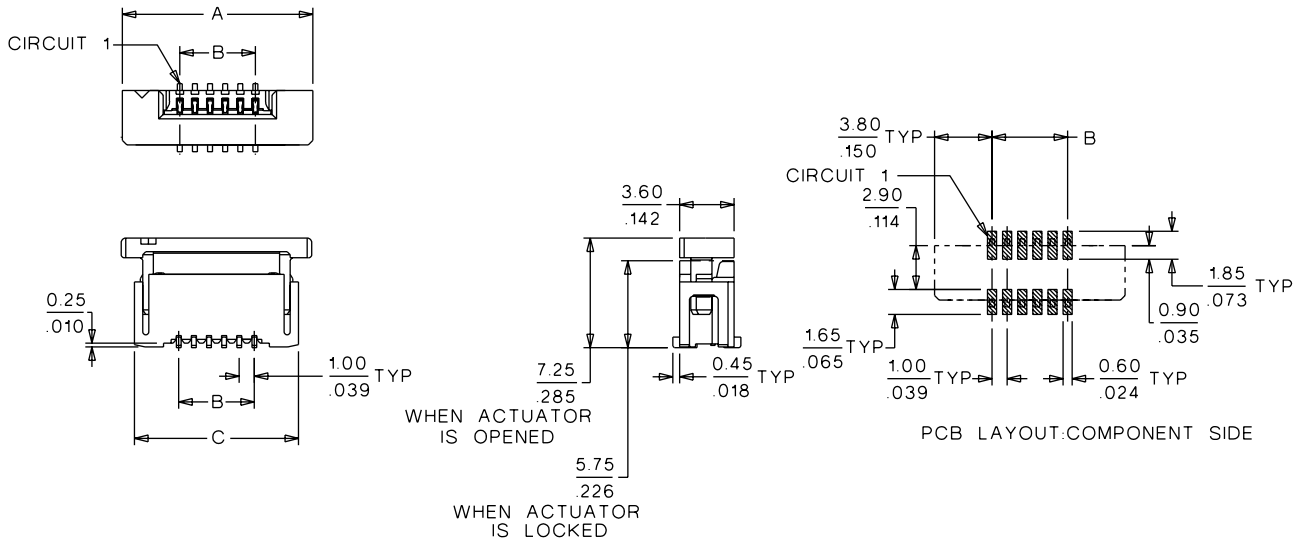
52610

Vertical, SMT, ZIF



FFC/FPC Connectors

F



ORDERING INFORMATION AND DIMENSIONS

| Circuits | Order No. | Dimension | | | Carrier Tape Width |
|----------|------------|---------------|---------------|---------------|--------------------|
| | | A | B | C | |
| 6 | 52610-0690 | 12.60 (.496) | 5.00 (.197) | 10.85 (.427) | 24.00 (.945) |
| 8 | 52610-0890 | 14.60 (.575) | 7.00 (.276) | 12.85 (.506) | 24.00 (.945) |
| 10 | 52610-1090 | 16.60 (.654) | 9.00 (.354) | 14.85 (.585) | 24.00 (.945) |
| 12 | 52610-1290 | 18.60 (.732) | 11.00 (.433) | 16.85 (.663) | 32.00 (1.260) |
| 13 | 52610-1390 | 19.60 (.772) | 12.00 (.472) | 17.85 (.703) | 32.00 (1.260) |
| 14 | 52610-1490 | 20.60 (.811) | 13.00 (.512) | 18.85 (.742) | 32.00 (1.260) |
| 15 | 52610-1590 | 21.60 (.850) | 14.00 (.551) | 19.85 (.781) | 32.00 (1.260) |
| 16 | 52610-1690 | 22.60 (.890) | 15.00 (.591) | 20.85 (.821) | 44.00 (1.732) |
| 17 | 52610-1790 | 23.60 (.929) | 16.00 (.630) | 21.85 (.860) | 44.00 (1.732) |
| 18 | 52610-1890 | 24.60 (.969) | 17.00 (.669) | 22.85 (.900) | 44.00 (1.732) |
| 20 | 52610-2090 | 26.60 (1.047) | 19.00 (.748) | 24.85 (.978) | 44.00 (1.732) |
| 22 | 52610-2290 | 28.60 (1.126) | 21.00 (.827) | 26.85 (1.057) | 44.00 (1.732) |
| 24 | 52610-2490 | 30.60 (1.205) | 23.00 (.906) | 28.85 (1.136) | 44.00 (1.732) |
| 25 | 52610-2590 | 31.60 (1.244) | 24.00 (.945) | 29.85 (1.175) | 44.00 (1.732) |
| 26 | 52610-2690 | 32.60 (1.283) | 25.00 (.984) | 30.85 (1.215) | 44.00 (1.732) |
| 28 | 52610-2890 | 34.60 (1.362) | 27.00 (1.063) | 32.85 (1.293) | 56.00 (2.205) |
| 30 | 52610-3090 | 36.60 (1.441) | 29.00 (1.142) | 34.85 (1.372) | 56.00 (2.205) |

Note: For cable specification dimensions, see cable pages at end of section