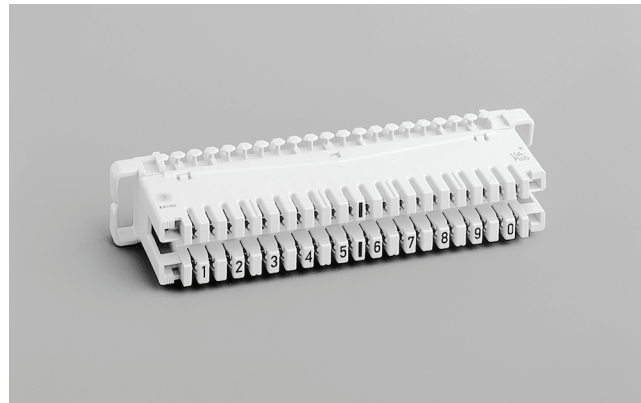


LSA-PLUS[®] and LSA PROFIL[®] Modules Series 2

LSA-PLUS[®] Connection Module

Connection module for 8 or 10 pairs with parallel test access or overvoltage protection contact.

- For clicking onto back-mount frames 2/8 or 2/10
- Housing colour: grey
- 1 set = 10 pieces
 - for 8 pairs including 1 set of number flags 1...0
 - for 10 pairs including 1 set of number flags 1...0 and 10..100

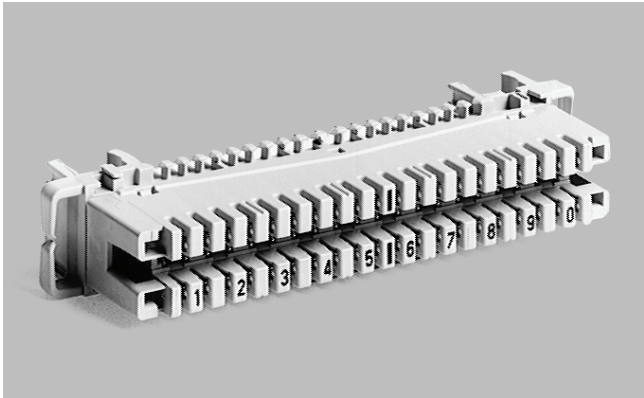


LSA-PLUS connection module 2/10

Order data:

Order-No:	Description	Weight/Pack	Pack
For 10 pairs			
6089 1 002-02	LSA-PLUS connection module 2/10 cable end up, without colour code printed: jumper side 1...0	0.600 kg	1 set
6089 1 002-01	LSA-PLUS connection module 2/10 cable end up, with colour code 1 printed: jumper side 1...0	0.600 kg	1 set
6089 1 002-06	LSA-PLUS connection module 2/10 cable end up, without colour code printed: jumper side 0...9	0.600 kg	1 set
For 8 pairs			
6036 1 002-00	LSA-PLUS connection module 2/8 cable end up, without colour code printed: jumper side 1...8	0.480 kg	1 set

LSA-PLUS[®] and LSA PROFIL[®] Modules Series 2



LSA PROFIL connection module 2/10

LSA PROFIL[®] Connection Module

Connection module for 8 or 10 pairs with parallel test access or overvoltage protection contact.

Designed for universal use with:

- Profile rods (with 75 mm distance for 8 pair modules, 95 mm for 10 pair modules)
- Back-mount frames 2/8 or 2/10
- DIN rails
(in conjunction with DIN rail adapter
Order- No: 6461 2 013-00).
- Housing colour: grey
- 1 set = 10 pieces
for 8 pairs including 1 set of number flags 1...0
for 10 pairs including 1 set of number flags 1...0
and 10...100

Order data:

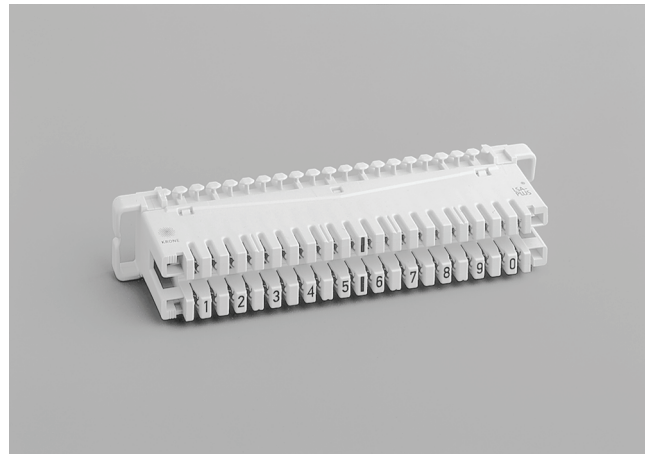
Order-No:	Description	Weight/Pack	Pack
For 10 pairs			
6089 1 120-02	LSA PROFIL connection module 2/10 without colour code printed: jumper side 1...0	0.600 kg	1 set
6089 1 120-01	LSA PROFIL connection module 2/10 with colour code 1 printed: jumper side 1...0	0.600kg	1 set
6089 1 120-19	LSA PROFIL connection module 2/10 without colour code printed: jumper side 1...0 large jumper guides	0.600kg	1 set
6089 1 120-23	LSA PROFIL connection module 2/10 without colour code printed: jumper side 1...0 without jumper guides	0.600kg	1 set
For 8 pairs			
6036 1 004-00	LSA PROFIL connection module 2/8 without colour code printed: jumper side 1...8	0.480 kg	1 set

LSA-PLUS[®] and LSA PROFIL[®] Modules Series 2

LSA-PLUS[®] Disconnection Module

Disconnection module for 8 or 10 pairs with disconnection point for opening the line, testing in both directions or the insertion of graded protection elements.

- For clicking onto back-mount frames 2/8 or 2/10
- Housing colour: white
- 1 set = 10 pieces
 - for 8 pairs: including 1 set of number flags 1...0
 - for 10 pairs: including 1 set of number flags 1...0 and 1 set of number flags 10...100

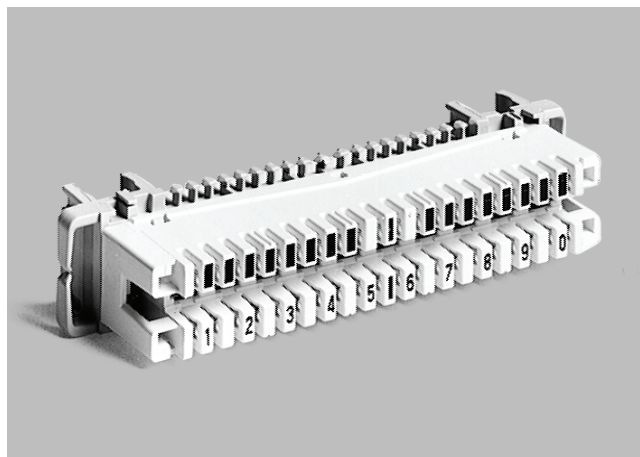


LSA-PLUS disconnection module 2/10

Order data:

Order-No:	Description	Weight/Pack	Pack
For 10 pairs			
6089 1 102-02	LSA-PLUS disconnection module 2/10 without colour code printed: jumper side 1...0	0.600 kg	1 set
6089 1 102-01	LSA-PLUS disconnection module 2/10 with colour code 1 printed: jumper side 1...0	0.600 kg	1 set
6089 1 102-06	LSA-PLUS disconnection module 2/10 without colour code printed: jumper side 0...9	0.600 kg	1 set
6089 1 102-09	LSA-PLUS disconnection module 2/10 with colour code 3 printed: jumper side 1...0	0.600 kg	1 set
For 8 pairs			
6036 1 102-00	LSA-PLUS disconnection module 2/8 without colour code printed: jumper side 1...8	0.480 kg	1 set

LSA-PLUS[®] and LSA PROFIL[®] Modules Series 2



LSA PROFIL disconnection module 2/10

LSA PROFIL[®] Disconnection Module

Disconnection module for 8 or 10 pairs with disconnection point for opening the line, testing in both directions or the insertion of graded protection elements.

Designed for universal use with:

- Profile rods (with 75 mm distance for 8 pair modules, 95 mm for 10 pair modules)
- Back-mount frames 2/8 or 2/10
- DIN rails
(in conjunction with DIN rail adapter Order-No: 6461 2 013-00).
- Housing colour: white
- 1 set = 10 pieces
for 8 pairs including 1 set of number flags 1...0
for 10 pairs including 1 set of number flags 1...0
and 10...100

Order data:

Order-No:	Description	Weight/Pack	Pack
For 10 pairs			
6089 1 121-02	LSA PROFIL disconnection module 2/10 without colour code printed: jumper side 1...0	0.600 kg	1 set
6089 1 121-01	LSA PROFIL disconnection module 2/10 with colour code 1 printed: jumper side 1...0	0.600 kg	1 set
6089 1 121-17	LSA PROFIL disconnection module 2/10 without colour code printed: jumper side 1...0 large jumper guides	0.600 kg	1 set
6089 1 121-30	LSA PROFIL disconnection module 2/10 without colour code printed: jumper side 1...0 without jumper guides	0.600 kg	1 set
For 8 pairs			
6036 1 005-00	LSA PROFIL disconnection module 2/8 without colour code printed: jumper side 1...8	0.480 kg	1 set

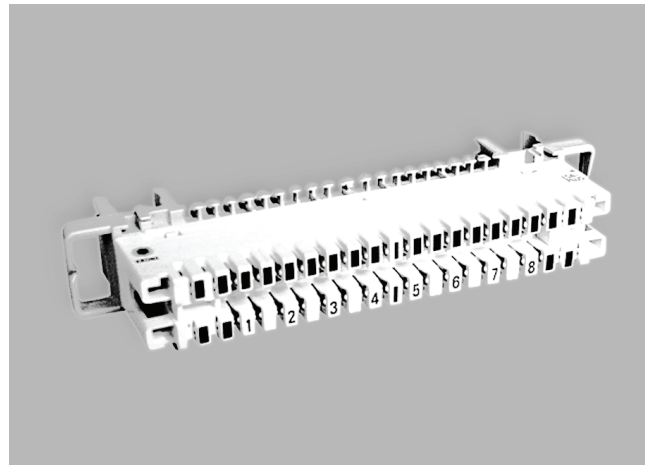
LSA-PLUS[®] and LSA PROFIL[®] Modules Series 2

LSA PROFIL[®] Disconnection Module 2/8-95

Disconnection module for 8 pairs with 95 mm fixing dimension, printed 1...8 (can be installed together with LSA PROFIL disconnection modules 2/10 in the same bay).

Designed for universal use with:

- Profile rods
- Back-mount frame 2/10
- DIN rails
(in conjunction with DIN rail adapter
Order-No: 6461 2 013-00).
- Housing colour: white
- 1 set = 10 pieces
for 8 pairs including 1 set of number flags 1...0
for 10 pairs including 1 set of number flags 1...0
and 10...100



Contacts one and ten covered with dummy inserts

Order data:

Order-No:	Description	Weight/Pack	Pack
6089 1 128-00	LSA PROFIL disconnection module 2/8-95 without colour code printed: jumper side 1...8 without jumper guides	0.600 kg	10 pieces
6089 1 128-01	LSA PROFIL disconnection module 2/8-95 without colour code printed: jumper side 1...8 with jumper guides	0.600 kg	10 pieces
6089 1 128-02	LSA PROFIL disconnection module 2/8-95 without colour code printed: jumper side 1...8 with large jumper guides	0.600 kg	10 pieces
6089 1 121-47	LSA PROFIL disconnection module 2/8-95 without colour code printed: jumper side 1...8 with jumper guides without dummy insert	0.600 kg	10 pieces

LSA-PLUS[®] and LSA PROFIL[®] Modules Series 2



LSA-PLUS switching module 2/10

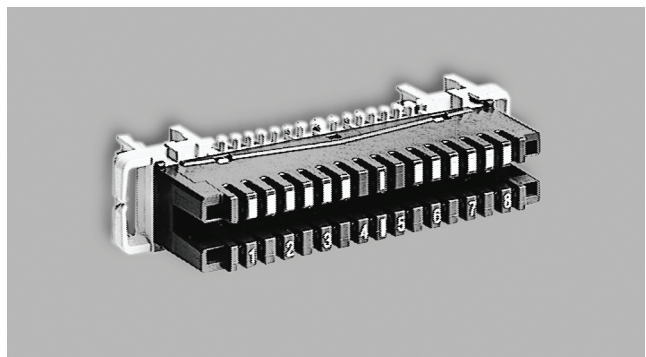
LSA-PLUS[®] Switching Module

Switching module for wiring up to 20 pairs (depending on the application). The overall diameter of the single wires can range from 0.7 mm to 1.6 mm.

- For clicking onto back-mount frames 2/10
- Housing colour: brown

Order data:

Order-No:	Description	Weight/Pack	Pack
6089 2 089-00	LSA-PLUS switching module 2/10 printed: jumper side 1...0	0.060 kg	1 piece



LSA-PROFIL-Schaltleiste 2/8

LSA PROFIL[®] Switching Module

Switching module for wiring up to 16 or 20 pairs (depending on the application). The overall diameter of the single wires can range from 0.7 mm to 1.6 mm.

Designed for universal use with:

- Profile rods (75 mm mounting distance for 8 pair modules, 95 mm for 10 pair modules)
- Back-mount frame 2/8 or 2/10
- DIN rails
(in conjunction with DIN rail adapter Order-No: 6461 2 013-00).
- Housing colour: brown
- 1 set = 10 pieces
including 1 set of number flags 1...0

Order data:

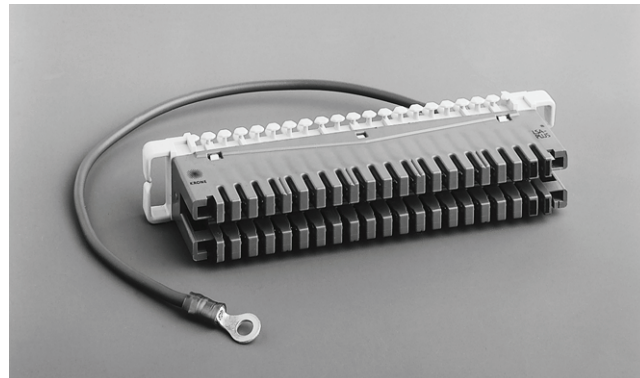
Order-No:	Description	Weight/Pack	Pack
2/8 (for up to 16 pairs)			
6036 1 006-00	LSA PROFIL switching module 2/8 printed: jumper side 1...8	0.500 kg	1 set
2/10 (for up to 20 pairs)			
6089 1 126-00	LSA PROFIL switching module 2/10 printed: jumper side 1...0	0.570 kg	1 set

LSA-PLUS[®] and LSA PROFIL[®] Modules Series 2

LSA-PLUS[®] Earth Module

For connecting drain wires to an earth contact without soldering, wire-stripping or the use of screws.

- Up to 38 drain wires
- For clicking onto back-mount frames 2/10
- Housing colour: red



LSA-PLUS earth module 2/38

Order data:

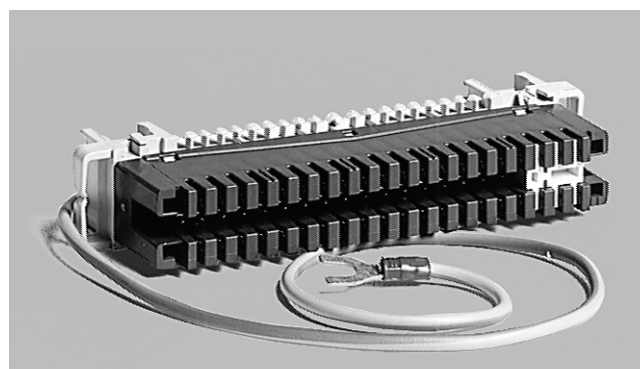
Order-No:	Description	Weight/Pack	Pack
6089 2 017-00	LSA-PLUS earth module 2/38 with earth wire and round cable lug for M4 38-pole, length: approx 250mm	0.070 kg	1 piece
6089 2 017-03	LSA-PLUS earth module 2/38 with pin socket colour: green/yellow, length: approx 250 mm	0.072 kg	1 piece

LSA PROFIL[®] Earth Module

For connecting drain wires to an earth contact without soldering, wire-stripping or the use of screws.

Designed for universal use with:

- Profile rods
- Back-mount frames 2/8 or 2/10
- DIN rails
(in conjunction with DIN rail adapter Order-No: 6461 2 013-00).
- Housing colour: red

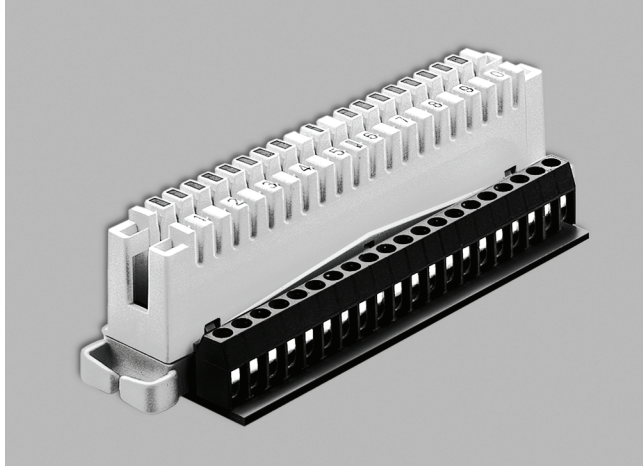


LSA PROFIL earth module 2/34

Order data:

Order-No:	Description	Weight/Pack	Pack
Profile mounting distance 95 mm			
6089 2 108-01	LSA PROFIL earth module 2/34 with slotted prong, colour: green/yellow, length: approx 500 mm	0.066 kg	1 piece
6089 2 108-00	LSA PROFIL earth module 2/34 without jumper guides, with slotted prong colour: green/yellow, length: approx 500 mm	0.066 kg	1 piece
Profile mounting distance 75 mm			
6036 2 121-00	LSA PROFIL earth module 2/26 without jumper guides, with slotted prong colour: red, length: approx 500 mm	0.562 kg	10 pieces

LSA-PLUS[®] and LSA PROFIL[®] Modules Series 2



LSA-PLUS[®] Disconnection Module 2/10

- Screw terminals for terminating wires with conductor cross section up to 2.5 mm²
- Cable side up
- Without colour marking
- Printing on the jumper side: 1...0
- Colour: white

Order data:

Order-No:	Description	Weight/Pack	Pack
7004 2 001-01	LSA-PLUS disconnection module 2/10 with additional screw terminals on the jumper side, 20-pole, with a width of 36 mm, the module occupies two module slots in the back-mount frame.	0.092 kg	1 piece

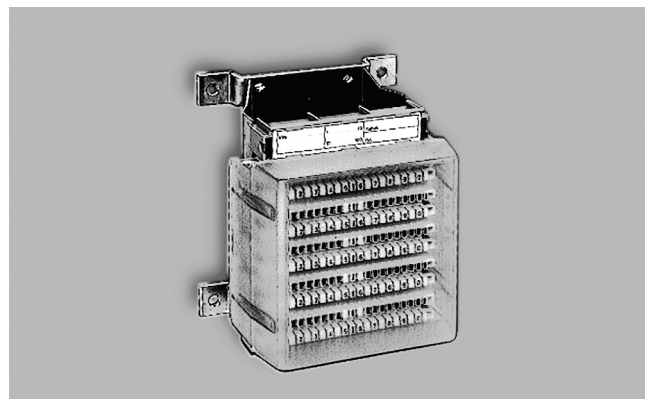
LSA-PLUS[®] and LSA PROFIL[®] Modules Series 2

Cable Head 80

Cable head for installation in cross connection cabinets with vertical bay rails.

The product consists of:

- ❑ 1 back-mount frame 2/10 for narrow bays (120 mm distance between rails), cable and cable head fixing material, as well as 2 edge protection strips
- ❑ LSA-PLUS connection modules 2/10 or LSA-PLUS disconnection modules 2/10
- ❑ Assembly instructions
- ❑ 1 set of number flags for identification printed 1...0 and 10100
- ❑ 1 module label holder 2/10, with labelling strip, printed
- ❑ 1 dust cover 2/10, transparent, deep (allows for installation of overvoltage magazines 2/10), for covering 5 or 10 LSA-PLUS modules 2/10



Cable head 80, 50 pairs

Order data:

Order-No:	Description	Weight/Pack	Pack
Cable head 80 for 50 pairs			
6042 1 002-00	Cable head 80 for 50 pairs with 5 LSA-PLUS connection modules 2/10 cable end up with colour code rd, gn, gr, ye, wt	0.890 kg	1 piece
6042 1 002-01	Cable head 80 for 50 pairs with 5 LSA-PLUS connection modules 2/10 cable end up without colour code	0.890 kg	1 piece
6042 1 102-00	Cable head 80 for 50 pairs with 5 LSA-PLUS disconnection modules 2/10 cable end up with colour code rd, gn, gr, ye, wt	0.890 kg	1 piece
6042 1 102-01	Cable head 80 for 50 pairs with 5 LSA-PLUS disconnection modules 2/10 cable end up without colour code	0.890 kg	1 piece
Cable head 80 for 100 pairs			
6092 1 002-01	Cable head 80 for 100 pairs with 10 LSA-PLUS connection modules 2/10 cable end up without colour code	1.550 kg	1 piece
6092 1 102-01	Cable head 80 for 100 pairs with 10 LSA-PLUS disconnection modules 2/10 cable end up without colour code	1.550 kg	1 piece