

Purex Arm Purification Accessories

Purex dust and fume extraction arms are used worldwide throughout many different industries to enable safe and efficient extraction of harmful dust and fume.

Purex arms and accessories are engineered to exacting standards and are built from high grade materials to ensure maximum performance, flexibility of use and long life in operation.

Typical Applications

By carefully matching the correct combination of extraction unit, arm layout, pre-filter and main filter, a Purex system can be used to extract and purify hazardous fumes and dust which are generated during: -

- Chemical and biological treatments
- Medical procedures
- Pharmaceutical production
- Manual and automated soldering
- Etching, marking and cutting metals or plastics
- Welding
- Powder handling and packaging
- Gluing and many more...

Features...

- ESD safe
- Powerful high velocity extraction
- Fully adjustable for convenience of work
- Patented positive lock positioning system which holds multi-position arms reliably in place no matter how often they are adjusted.
- Full range of cowl sizes from 25mm (1") to 100mm (4") diameter
- Universal mounting collar complete with integral flow control valve
- Versatile bench, wall and ceiling mountings
- Low maintenance design

For more
information
visit:

www.purexLtd.co.uk



Versatile range of quick fit attachments for multi-position and stainless steel arms

Processes

When several processes are carried out at the same workstation it may be necessary to use different attachments to ensure that the fumes from each individual process are captured in the most efficient way.

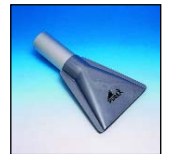
Purex extraction arms are designed to enable the quick changeover of nozzles and cowls in order to minimise any inconvenience caused and to reduce downtime.

Aerodynamically designed attachments

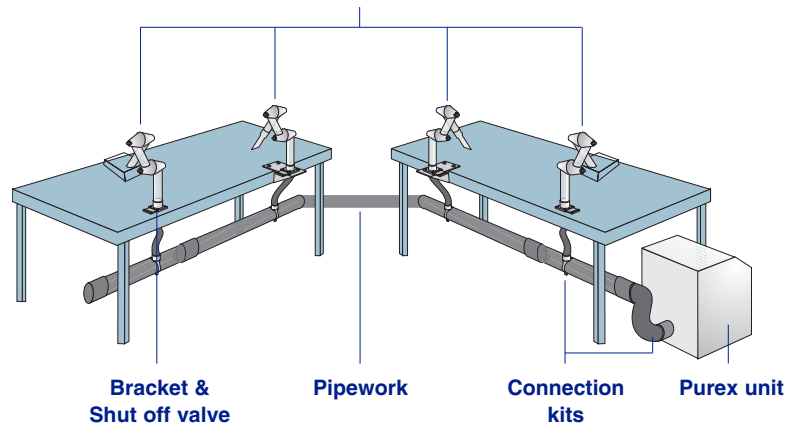
Multi-position arms require 54mm diameter attachments while stainless steel flexible arms require 38mm diameter.

The range includes:

- Pen nib nozzles
- Conical cowls
- Clear hood cowls
- Delta cowls



Typical Layout of Arms and Accessories



Quick fit attachments

To remove the existing attachment from a multi-position arm simply undo the thumbscrew and slide the current attachment out, then simply replace with a different one and re-tighten the thumbscrew.



Changing the attachment on stainless steel flexible arms is even quicker. Just slide the attachment currently in use off the arm and slide the replacement on.

Switching from one type of arm to another is quick and simple

Changing from multi-position arms to stainless steel arms - or vice versa - can easily be accommodated owing to the universal mounting collars fitted as standard to both types of arm. Just undo the thumbscrew on the mounting collar, lift out the old arm and replace it with the new one. To enable operators to adjust the airflow on their arm individually, every mounting collar is fitted with an integral flow control valve.



Unique multi-position joint keeps Purex arms firmly in position while you work

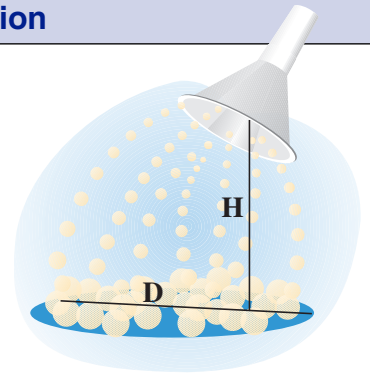
Purex multi-position arms incorporate a unique patented knuckle joint which ensures reliable positioning, time after time.

A spring-loaded tensioning bolt enables the operator to tighten the arm with minimum force, creating a positive lock between serrated inner cams on the inside of the knuckle halves. Once set to the correct tension, the arm can be adjusted without unscrewing and re-tightening the bolt.



How to choose the correct arm for your application

1. Observe the pattern of the fume given off by your application.
2. Check the capture pattern diagrams below and select the capture apparatus that matches your fume pattern most closely.
3. Check the arm diameter corresponding to the capture apparatus just chosen.
4. Decide the most convenient location for the arm, making sure it will reach the extraction zone - 3 knuckle multi-position arms and longer arm sections are available for extended reach. Contact Purex or your supplier for further details.
5. Select mounting brackets for your arm (if required).



| Stainless steel flexible arm 38mm Ø | | Multi-position arm 54mm Ø | | Telescopic arm 54mm Ø | | | | | | | | | | | |
|---|---|---|--|---|---------|-----------|----------|-------------|---------|-------------|---|-------------|---------|-------------|---|
| Code: 120135* | | Code: 120140* | | Code: 120155 | | | | | | | | | | | |
|  <p>Support collar and valve included. Select the appropriate capture apparatus from the list below.</p> <p>* If required for a Fume-Cube, Fumebuster or Laserex connection kit use code 120130</p> | |  <p>Support collar and valve included. Select the appropriate capture apparatus from the list below.</p> <p>* If required for a Laserex connection kit use code 120147</p> | |  <p>Support collar and valve included.</p> <p>Arm supplied with telescopic Pen-nib nozzle.</p> <p>No other capture apparatus required.</p> | | | | | | | | | | | |
| 38mm Capture Apparatus | | 54mm Capture Apparatus | | Capture Patterns | | | | | | | | | | | |
| Pen-nib nozzle (38mm ID) Code: 840170 Pen-nib nozzle (32mm ID) Code: 840172 Pen-nib nozzle (25mm ID) Code: 840175 |  | Pen-nib nozzle (54mm ID) Code: 120156 |  | <table border="1"> <thead> <tr> <th>ID</th> <th>Max D x H</th> </tr> </thead> <tbody> <tr> <td>54mm</td> <td>200 x 260mm</td> </tr> <tr> <td>38mm</td> <td>180 x 190mm</td> </tr> <tr> <td>32mm</td> <td>140 x 160mm</td> </tr> <tr> <td>25mm</td> <td>100 x 100mm</td> </tr> </tbody> </table> | ID | Max D x H | 54mm | 200 x 260mm | 38mm | 180 x 190mm | 32mm | 140 x 160mm | 25mm | 100 x 100mm |  |
| ID | Max D x H | | | | | | | | | | | | | | |
| 54mm | 200 x 260mm | | | | | | | | | | | | | | |
| 38mm | 180 x 190mm | | | | | | | | | | | | | | |
| 32mm | 140 x 160mm | | | | | | | | | | | | | | |
| 25mm | 100 x 100mm | | | | | | | | | | | | | | |
| Conical cowl (95mm ID) Code: 840190 Conical cowl (90mm ID) Code: 840192 Conical cowl (83mm ID) Code: 840195 |  | Conical cowl (172mm ID) Code: 120158 |  | <table border="1"> <thead> <tr> <th>ID</th> <th>Max D x H</th> </tr> </thead> <tbody> <tr> <td>172mm</td> <td>210 x 260mm</td> </tr> <tr> <td>95mm</td> <td>190 x 200mm</td> </tr> <tr> <td>90mm</td> <td>150 x 160mm</td> </tr> <tr> <td>83mm</td> <td>110 x 150mm</td> </tr> </tbody> </table> | ID | Max D x H | 172mm | 210 x 260mm | 95mm | 190 x 200mm | 90mm | 150 x 160mm | 83mm | 110 x 150mm |  |
| ID | Max D x H | | | | | | | | | | | | | | |
| 172mm | 210 x 260mm | | | | | | | | | | | | | | |
| 95mm | 190 x 200mm | | | | | | | | | | | | | | |
| 90mm | 150 x 160mm | | | | | | | | | | | | | | |
| 83mm | 110 x 150mm | | | | | | | | | | | | | | |
| Clear hood cowl (265 x 310mm) Code: 840160 |  | Clear hood cowl (265 x 310mm) Code: 120159 |  | <table border="1"> <thead> <tr> <th>Arm Ø</th> <th>Max W x L</th> </tr> </thead> <tbody> <tr> <td>54mm</td> <td>300 x 300mm</td> </tr> <tr> <td>38mm</td> <td>300 x 200mm</td> </tr> </tbody> </table> | Arm Ø | Max W x L | 54mm | 300 x 300mm | 38mm | 300 x 200mm |  | | | | |
| Arm Ø | Max W x L | | | | | | | | | | | | | | |
| 54mm | 300 x 300mm | | | | | | | | | | | | | | |
| 38mm | 300 x 200mm | | | | | | | | | | | | | | |
| Delta cowl (290 x 5mm inlet) Code: 840180 Delta cowl (192 x 5mm inlet) Code: 840182 Delta cowl (90 x 12mm inlet) Code: 840185 |  | Delta cowl (160 x 10mm inlet) Code: 120157 |  | <table border="1"> <thead> <tr> <th>Inlet Ø</th> <th>Max W x L</th> </tr> </thead> <tbody> <tr> <td>160x20mm</td> <td>300 x 300mm</td> </tr> <tr> <td>290x5mm</td> <td>300 x 200mm</td> </tr> <tr> <td>192x5mm</td> <td>200 x 150mm</td> </tr> <tr> <td>90x12mm</td> <td>100 x 100mm</td> </tr> </tbody> </table> | Inlet Ø | Max W x L | 160x20mm | 300 x 300mm | 290x5mm | 300 x 200mm | 192x5mm | 200 x 150mm | 90x12mm | 100 x 100mm |  |
| Inlet Ø | Max W x L | | | | | | | | | | | | | | |
| 160x20mm | 300 x 300mm | | | | | | | | | | | | | | |
| 290x5mm | 300 x 200mm | | | | | | | | | | | | | | |
| 192x5mm | 200 x 150mm | | | | | | | | | | | | | | |
| 90x12mm | 100 x 100mm | | | | | | | | | | | | | | |

Replacement knuckle joint assembly for multi-position and telescopic arms

1st Knuckle assembly
Code: 120160
2nd Knuckle assembly
Code: 120161



Fixings

| | | | |
|--|---|---|---|
| Screwed bench bracket Code: 840200/C |  | Wall bracket Code: 840210/C |  |
| Clamped bench bracket Code: 120180 |  | Bench support collar and valve Code: 840047 |  |

Flexible arm 100mm Ø x 2M

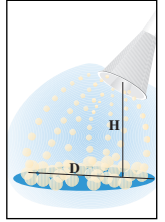
Code: 120175



Supplied with conical cowl and mounting bracket.

Capture Patterns

Max D x H
300 x 300mm



Mini stainless steel flexible arm 25mm Ø for solder pot extraction

Code: 120200



1 x 1m x 13mm Ø flexible hose (grey)
1 x ON/OFF tap
1 x Mini arm base
1 x 25mm Flexible stainless steel arm
1 x Mini delta nozzle

NB: This arm is equivalent to 5 x 5mm iron adaptor kits

Plenum cowls

Plenum cowl

Anti static polycarbonate (black)
Includes 50mm valve collar assembly
Code: 120703



Plenum cowl

Anti static polycarbonate (clear)
Includes 50mm valve collar assembly
Code: 120704

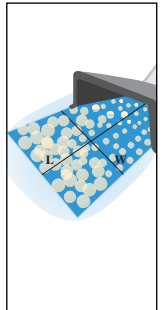


Flexible connecting hose (Ø57mm)(Per metre)
Code: 570050



Capture Patterns

Max W x L
300 x 400mm



Options

ESD safe

ESD safe arms conforming to BS EN61340-1 are also available and are supplied with 1 MΩ leakage resistant cable.

Fixings

Other types of bracket are available on request for requirements such as ceiling mounting or longer reach.

Extraction units

Purex extraction units are powerful, economic, sophisticated and environmentally friendly.

For further details please see datasheet 2a or visit www.purexLtd.co.uk.



Other products are available please call for further details. All information subject to change without prior notice.

UK - Purex International Ltd

Purex House, Farfield Park, Manvers, Rotherham, S63 5DB, England.
T: ++44 (0) 1709 763000 • F: ++44 (0) 1709 763001
E: purex@purexLtd.co.uk • W: www.purexLtd.co.uk

USA - Purex Americas

1290 Lakeside Drive, Gurnee, Illinois 60031, USA.
Tel: 866 360 5675 (Toll Free) • Fax: 866 360 5676 (Toll Free)
E: sales@purexamericas.com • W: www.purexamericas.com

Websites

www.purexLtd.co.uk • www.purexamericas.com • www.purex.de • www.laserfume.com • www.solderfume.co.uk

Distributed by: