



- ◆ *Pumps fresh water, sea water and diesel*
- ◆ *Fast diesel refuelling and transfer with no spillage*
- ◆ *Bilge pump out in tight areas*
- ◆ *Water transfer; deck showers; and general wash-down*
- ◆ *Agricultural spraying, carboy and drum emptying and transfer*
- ◆ *Robust, slim line with clip-on easy clean filter*

FLOW RATE:

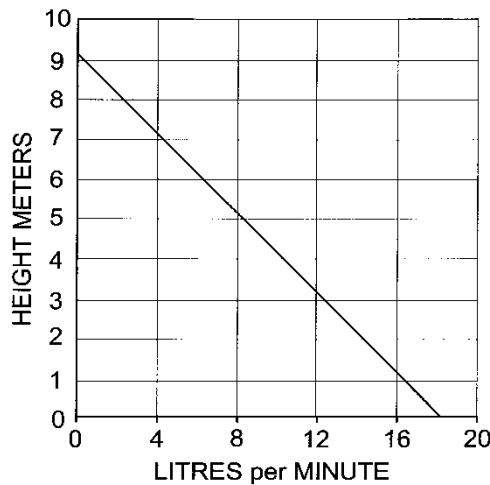
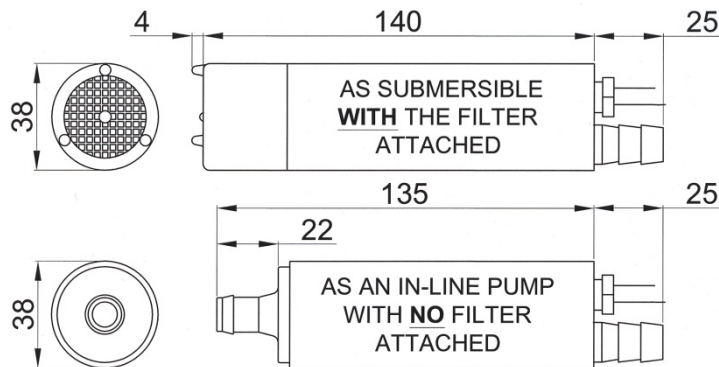
Flow rate and current reduces as the height to be pumped increases

RECOMMENDED FUSE SIZE:

*12 volt – 5 amp
24 volt – 3 amp*

WEIGHT: 0.85kg

CONNECTIONS: for 12.7mm (1/2") bore hose



a xylem brand

iL280P^{plus}

PUMP KIT

SUBMERSIBLE & IN-LINE

DIESEL

or

WATER

TRANSFER

iL280PK 12 volt d.c

iL280PK-24 24 volt d.c

- ◆ Up to 18 litres (4.4 gallons) per minute
- ◆ Suitable for diesel fuel, water and seawater
- ◆ Temperatures up to 80°C
- ◆ Includes 4m lay-flat hose, adjustable spray nozzle, 4m electrical cable with crocodile clips
- ◆ Intermittent duty



Not suitable for pumping petrol, light hydrocarbons, non-aqueous solvents

Doc 694/13